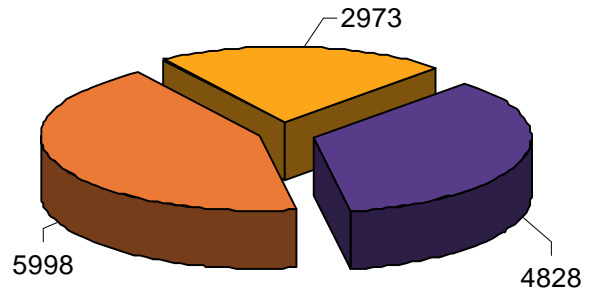




The 2010–11 Humanitarian Program was fully delivered: 13 799 visas granted, comprising:

- **5998 Refugee category visas**, including:
 - 759 Woman at Risk visas (12.7 per cent of total refugee visas granted)
- **7801 Other Humanitarian visas**, including:
 - 2973 offshore Special Humanitarian Program (SHP) visas
 - 4828 onshore visas



■ Refugee ■ Special Humanitarian Program ■ Onshore

Grants by subclass

Category	Subclass	Component	Grants
Refugee	Subclass 200 Refugee	offshore component 8971 grants	5211
	Subclass 201 In-country Special Humanitarian		26
	Subclass 203 Emergency Rescue		2
	Subclass 204 Woman at Risk		759
	Total Refugee visas		5998
Other Humanitarian	Subclass 202 Subclass 202 offshore (SHP)	onshore component 4828 grants	2973
	Subclass 866 Protection visas (IMAs)		2717
	Subclass 866 Protection visas (non-IMAs)		2101
	Other Program countable onshore visas ¹		10
Total Other Humanitarian visas			7801
Total Humanitarian Program grants for 2010–11			13 799

¹Includes 2 Resolution of Status visas where the visa holder has not previously held a Humanitarian Program visa and 8 SHP visas granted onshore through Ministerial Intervention.

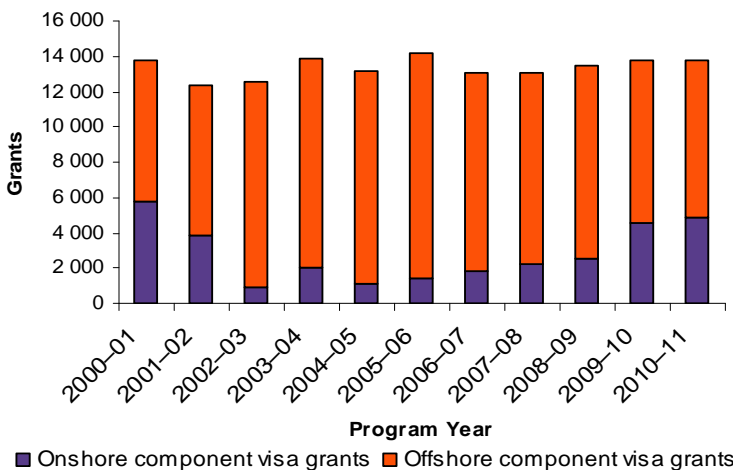
Humanitarian Program grants by component 2000–01 to 2010–11

Offshore resettlement component:

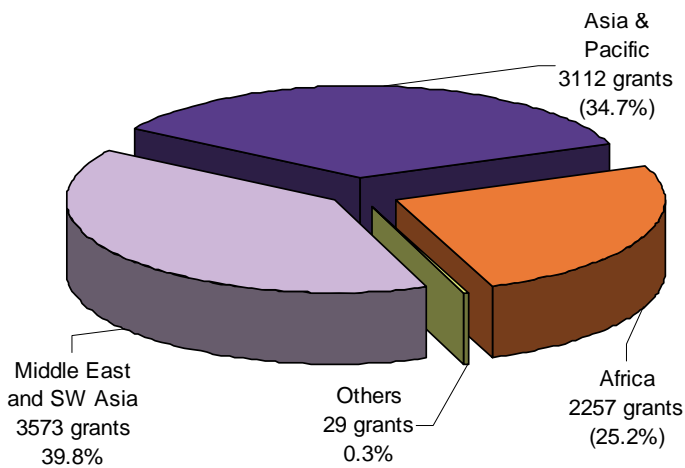
- offers resettlement in Australia for people overseas who are in the greatest need of humanitarian assistance.
- comprises visas granted under the:
 - Refugee category; and
 - subclass 202 visas granted offshore under the SHP.

Onshore protection/asylum component:

- offers protection for people in Australia who are found to be refugees according to the *Refugees Convention*.



Regional source of offshore grants



Australia’s Humanitarian Program is characterised by its flexibility.

Each year, the size and focus of the Program changes in response to evolving humanitarian situations and changes to the global need for resettlement.

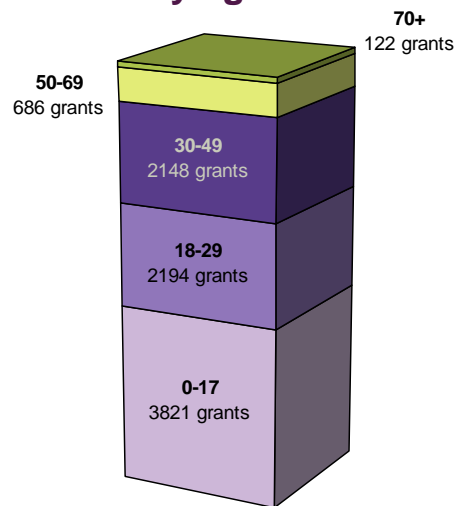
In line with global resettlement needs, in 2010–11 Australia's offshore Humanitarian Program was focused on the three priority regions of Africa, the Middle East (Including South West Asia) and Asia.

The *regional source* pie chart shows offshore Humanitarian Program visa grants by region based on where people granted an offshore humanitarian visa were born.

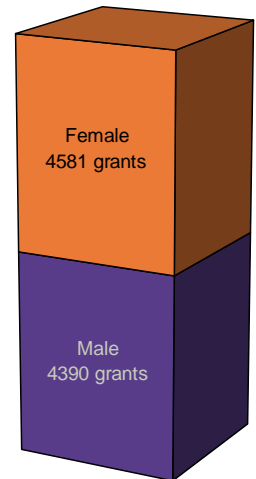
Offshore grants by top 10 countries of birth

	Refugee	SHP	Total
Iraq	1114	1037	2151
Burma	1393	50	1443
Afghanistan	423	604	1027
Bhutan	1001		1001
Congo (DRC)	514	51	565
Ethiopia	297	84	381
Sri Lanka	78	211	289
Iran	141	130	271
Sudan	61	182	243
Somalia	144	46	190
Others	832	578	1410
Total	5998	2973	8971

Offshore grants by age



Offshore grants by gender

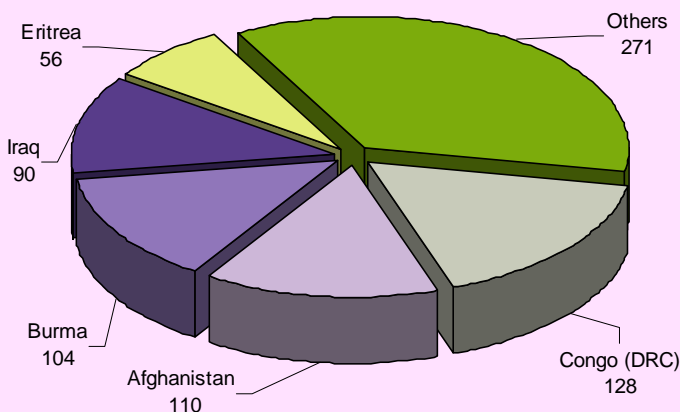


Woman at Risk visa grants by top 5 countries of birth

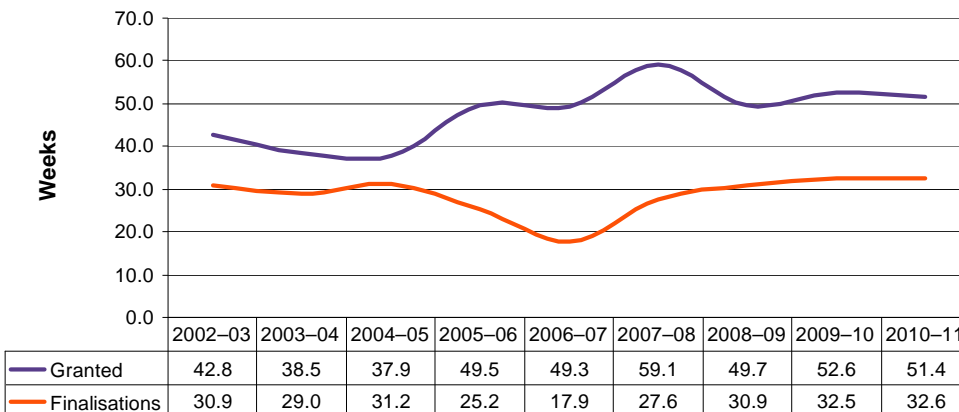
In 2010–11, 12.7 per cent (759 grants) of the Refugee category allocation was granted to Woman at Risk applicants, exceeding the nominal annual target of 12 per cent.

This visa subclass recognises the priority given by UNHCR to the protection of refugee women who are in particularly vulnerable situations.

The top five countries of birth for Woman at Risk visas granted under the Humanitarian Program were Congo (DRC), Afghanistan, Burma, Iraq and Eritrea.



Offshore Humanitarian visa application average processing times



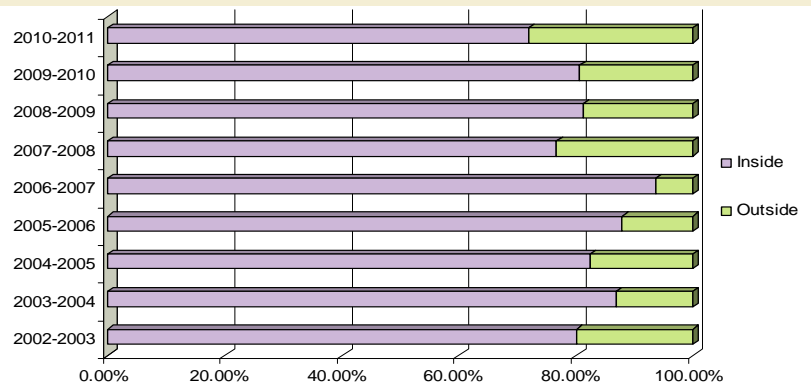
During 2010–11 the average number of weeks between lodgement and grant of an offshore Humanitarian visa was 51.4 weeks; this compares with 52.6 weeks in 2009–10.

The average number of weeks taken between lodgement and finalisation of an offshore Humanitarian application was 32.6 weeks, this compares with 32.5 weeks in 2009–10.

Offshore Humanitarian visa processing time service standard

The department's service standard is to finalise 75 per cent of cases within 52 weeks.

In 2010–11, 72 per cent of cases were finalised within the service standard of 52 weeks. This compares with 81 per cent in 2009–10.



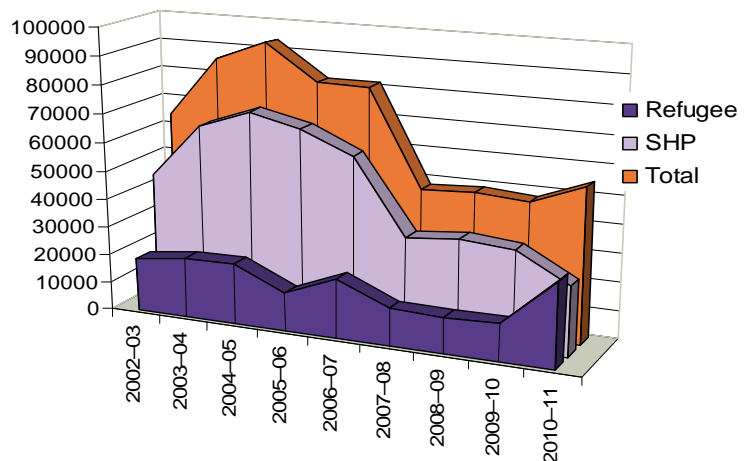
Offshore Humanitarian Program visa applications lodged

There were 54 243 offshore visa applications made during the 2010–11 Humanitarian Program.

In July 2010 a large number of self-referred Somalis lodged refugee visa applications at Nairobi post.

There were also a large number of self-referred applications to the Cairo post in November and December 2010 (primarily Sudanese, Ethiopians and Eritreans).

Due to these two events the number of refugee visa applications in 2010–11 was the largest since 2006–07.



	2002-03	2003-04	2004-05	2005-06	2006-07	2007-08	2008-09	2009-10	2010-11
Refugee	19059	21153	21543	13585	20979	13300	12740	13134	29795
SHP	46460	65325	71782	67745	60005	34259	35657	34045	24448
Total	65519	86478	93325	81330	80984	47559	48397	47179	54243

Data for this report was extracted from departmental systems at 30 June 2011.