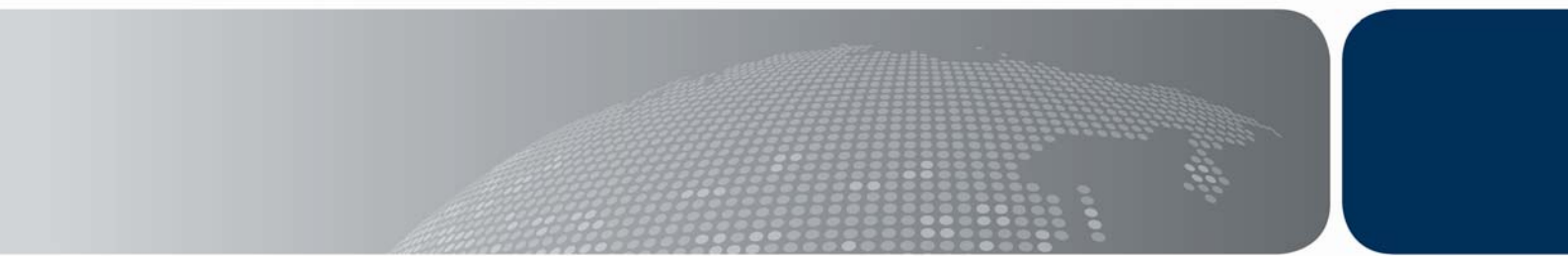




Australian Government
**Department of Immigration
and Citizenship**

Settler arrivals

2007-08



**Settler arrivals
1997-98 to 2007-08
Australia
States and territories**

© Commonwealth of Australia 2008

ISSN 1034-5051

This work is copyright. You may download, display, print and reproduce this material in unaltered form only (retaining this notice) for your personal, non-commercial use or use within your organisation. Apart from any use as permitted under the *Copyright Act 1968*, all other rights are reserved.

Requests for further authorisation should be directed to the:
Commonwealth Copyright Administration,
Copyright Law Branch,
Attorney-General's Department
Robert Garran Offices
National Circuit
Barton ACT 2600

Fax: 02 6250 5989
Email: commonwealth.copyright@ag.gov.au.

Published by the National Communications Branch of the Department of Immigration and Citizenship
6 Chan Street Belconnen ACT 2617

Table of contents

Contents

List of graphs

Figure 1	States and territories of intended residence 1988-89 to 2007-08 as a percentage of total settler arrivals	1
----------	---	---

Tables

Australia		3
Table 1.1	States and territories of intended residence, settler arrivals 1985-86 to 2007-08	3
Table 1.2	Settler arrivals by birthplace, 1997-98 to 2007-08	4
Table 1.3	Settler arrivals by state or territory of intended residence and sex, 1994-95 to 2007-08	11
Table 1.4	Permanent movements by age, 1994-95 to 2007-08	12
Table 1.5	Settler arrivals by eligibility category, 1997-98 to 2007-08	13
Table 1.6	Settler arrivals by eligibility category and State or Territory of intended residence, 1995-96 to 2007-08	14
New South Wales		16
Table 2.1	Settler arrivals by birthplace, 1997-98 to 2007-08	16
Victoria		23
Table 3.1	Settler arrivals by birthplace, 1997-98 to 2007-08	23
Queensland		30
Table 4.1	Settler arrivals by birthplace, 1997-98 to 2007-08	30
South Australia		37
Table 5.1	Settler arrivals by birthplace, 1997-98 to 2007-08	37
Western Australia		43
Table 6.1	Settler arrivals by birthplace, 1997-98 to 2007-08	43
Tasmania		49
Table 7.1	Settler arrivals by birthplace, 1997-98 to 2007-08	49

Northern Territory	53
Table 8.1 Settler arrivals by birthplace, 1997-98 to 2007-08	53
Australian Capital Territory	57
Table 9.1 Settler arrivals by birthplace, 1997-98 to 2007-08	57
Explanatory notes	62
Country classification (based on SACC)	65
Statistical publications	68

Figure 1 States and territories of intended residence 1988-89 to 2007-08 as a percentage of total settler arrivals

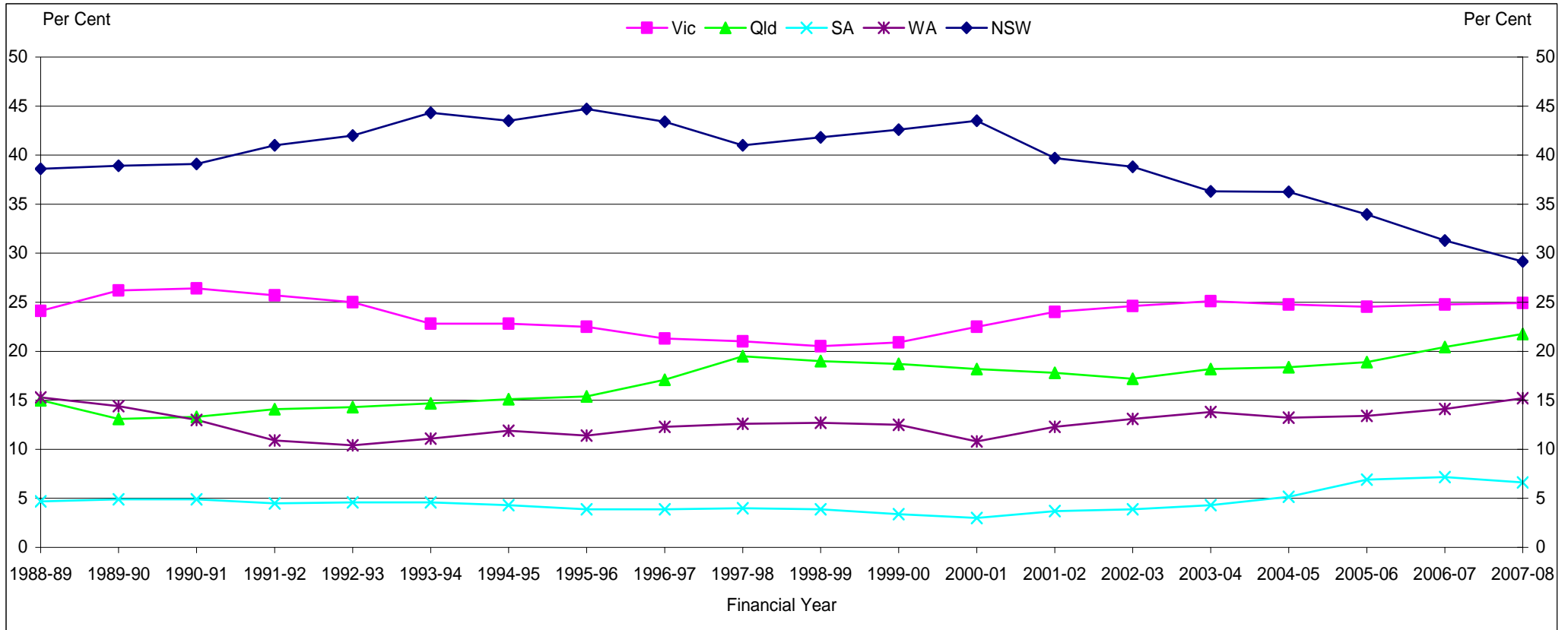


Figure 1 (continued) States and territories of intended residence 1988-89 to 2007-08 as a percentage of total settler arrivals

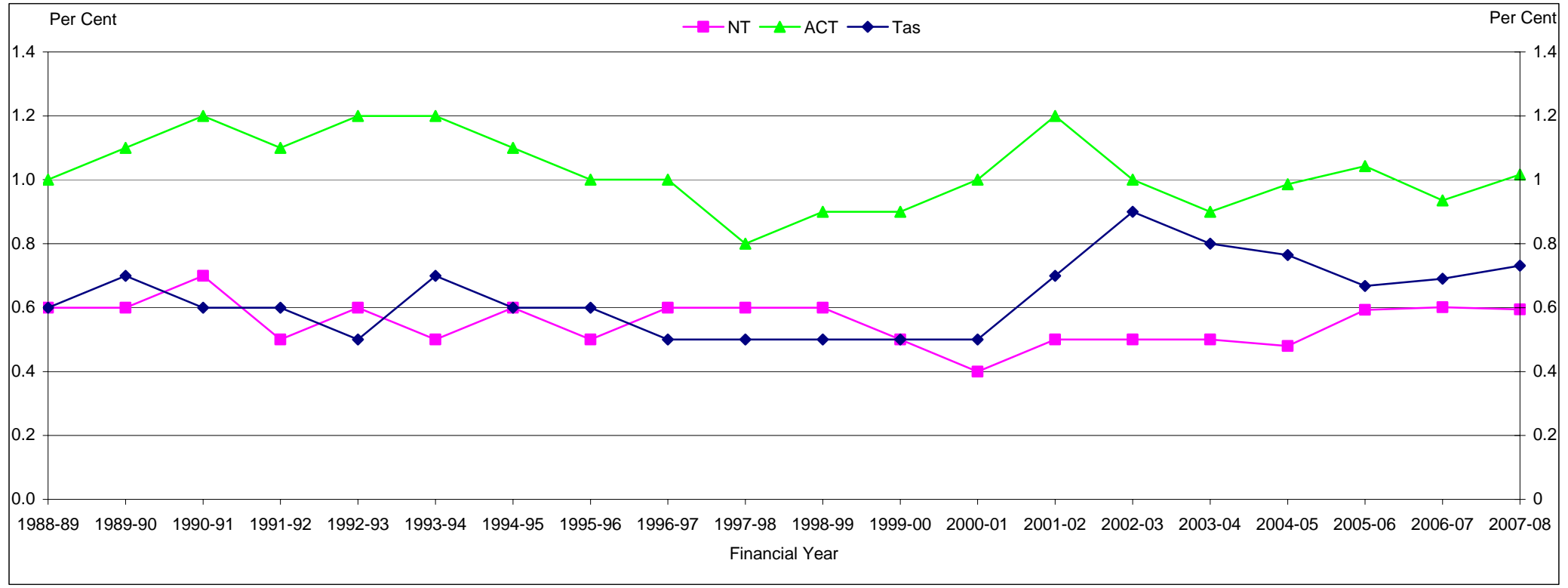


Table 1.1 States and territories of intended residence, settler arrivals 1985-86 to 2007-08

Financial Year	NSW	%	Vic	%	Qld.	%	SA	%	WA	%	Tas	%	NT	%	ACT	%	Total (a)
1985-86	36 760	39.8	23 848	25.8	11 772	12.7	4 923	5.3	11 572	12.5	948	1.0	1 045	1.1	1 358	1.5	92 410
1986-87	45 569	40.2	29 007	25.6	14 042	12.4	5 701	5.0	15 710	13.9	938	0.8	941	0.8	1 401	1.2	113 309
1987-88	57 286	39.9	35 050	24.4	20 988	14.6	6 278	4.4	20 054	14.0	1 015	0.7	1 053	0.7	1 766	1.2	143 490
1988-89	56 065	38.6	35 024	24.1	21 780	15.0	6 867	4.7	22 278	15.3	846	0.6	927	0.6	1 523	1.0	145 316
1989-90	47 153	38.9	31 788	26.2	15 922	13.1	5 898	4.9	17 512	14.4	864	0.7	733	0.6	1 343	1.1	121 227
1990-91	47 569	39.1	32 071	26.4	16 243	13.3	5 963	4.9	15 819	13.0	709	0.6	825	0.7	1 488	1.2	121 688
1991-92	44 066	41.0	27 547	25.7	15 189	14.1	4 796	4.5	11 712	10.9	617	0.6	569	0.5	1 178	1.1	107 391
1992-93	32 093	42.0	19 053	25.0	10 939	14.3	3 534	4.6	7 928	10.4	401	0.5	426	0.6	949	1.2	76 330
1993-94	30 886	44.3	15 918	22.8	10 267	14.7	3 201	4.6	7 743	11.1	465	0.7	372	0.5	807	1.2	69 768
1994-95	38 056	43.5	19 968	22.8	13 179	15.1	3 782	4.3	10 379	11.9	552	0.6	496	0.6	1 001	1.1	87 428
1995-96	44 327	44.7	22 269	22.5	15 284	15.4	3 842	3.9	11 318	11.4	556	0.6	494	0.5	1 021	1.0	99 139
1996-97	37 212	43.4	18 266	21.3	14 640	17.1	3 336	3.9	10 518	12.3	431	0.5	490	0.6	833	1.0	85 752
1997-98	31 694	41.0	16 233	21.0	15 095	19.5	3 069	4.0	9 741	12.6	369	0.5	435	0.6	657	0.8	77 327
1998-99	35 141	41.8	17 291	20.5	16 028	19.0	3 320	3.9	10 672	12.7	442	0.5	474	0.6	763	0.9	84 143
1999-00	39 311	42.6	19 319	20.9	17 286	18.7	3 105	3.4	11 512	12.5	444	0.5	471	0.5	809	0.9	92 272
2000-01	46 745	43.5	24 159	22.5	19 535	18.2	3 183	3.0	11 565	10.8	564	0.5	472	0.4	1 115	1.0	107 366
2001-02	35 301	39.7	21 374	24.0	15 825	17.8	3 316	3.7	10 954	12.3	589	0.7	459	0.5	1 075	1.2	88 900
2002-03	36 431	38.8	23 109	24.6	16 182	17.2	3 657	3.9	12 279	13.1	811	0.9	483	0.5	957	1.0	93 914
2003-04	40 561	36.3	28 028	25.1	20 284	18.2	4 773	4.3	15 411	13.8	884	0.8	596	0.5	1 050	0.9	111 590
2004-05	44 746	36.3	30 581	24.8	22 660	18.4	6 364	5.2	16 318	13.2	944	0.8	592	0.5	1 217	1.0	123 424
2005-06	44 661	33.9	32 297	24.5	24 862	18.9	9 099	6.9	17 638	13.4	879	0.7	780	0.6	1 372	1.0	131 593
2006-07	43 835	31.3	34 698	24.8	28 640	20.4	10 061	7.2	19 783	14.1	968	0.7	843	0.6	1 311	0.9	140 148
2007-08	43 520	29.1	37 213	24.9	32 496	21.8	9 896	6.6	22 738	15.2	1 092	0.7	888	0.6	1 518	1.0	149 365

(a) Includes not stated and Other Territories.

Australia

Table 1.2 Settler arrivals by birthplace, 1997-98 to 2007-08

Birthplace	1997-98	1998-99	1999-00	2000-01	2001-02	2002-03	2003-04	2004-05	2005-06	2006-07	2007-08
Oceania											
<i>Australia & External Territories (a)</i>	351	276	378	570	444	407	460	573	610	592	806
<i>New Zealand</i>	14 723	18 677	21 889	25 165	15 663	12 368	14 418	17 345	19 033	23 906	27 601
<i>Melanesia</i>											
New Caledonia	5	10	19	8	8	5	4	12	6	5	5
Papua New Guinea	134	126	84	140	124	216	192	182	215	226	256
Solomon Islands	26	36	44	27	32	18	29	43	16	35	24
Vanuatu	14	8	11	19	18	23	14	12	20	23	23
Total	179	180	158	194	182	262	239	249	257	289	308
<i>Micronesia</i>											
Guam	2	1	1	2	-	5	7	3	1	1	-
Kiribati	6	6	6	4	12	6	4	6	3	15	4
Marshall Islands	-	-	1	-	-	-	-	-	2	-	-
Micronesia Federated States	2	-	-	-	1	3	-	2	-	1	2
Nauru	2	3	2	7	13	8	6	9	6	7	2
Northern Mariana Islands	-	1	-	-	-	-	1	-	-	-	2
Palau	1	-	1	-	-	-	-	-	-	-	-
Micronesia nfd	-	-	1	-	-	-	-	-	-	-	-
Total	13	11	12	13	26	22	18	20	12	24	10
<i>Polynesia (excluding Hawaii)</i>											
Cook Islands	228	207	200	236	124	82	108	91	98	114	244
Fiji	1 070	1 561	1 856	2 150	1 608	1 609	1 603	1 736	1 830	1 492	1 794
French Polynesia	4	3	11	6	2	6	3	8	5	2	5
Niue	8	55	48	57	28	21	32	35	25	27	78
Samoa	1 024	1 167	1 074	1 295	756	506	665	747	594	415	637
Samoa American	1	10	12	10	12	4	10	11	9	3	18
Tokelau	12	19	19	30	32	15	28	26	31	14	30
Tonga	173	330	371	402	272	211	232	284	269	181	166
Tuvalu	6	4	11	6	3	4	3	6	4	2	-
Polynesia (excl Hawaii) nec	-	1	-	-	-	-	-	-	-	-	-
Total	2 526	3 357	3 602	4 192	2 837	2 458	2 684	2 944	2 865	2 250	2 972
Total Oceania	17 792	22 501	26 039	30 134	19 152	15 517	17 819	21 131	22 777	27 061	31 697
Europe											
<i>United Kingdom & Ireland</i>											
UK	9 193	8 785	9 201	9 037	8 749	12 508	18 272	18 220	23 290	23 223	23 236
Ireland	707	680	748	709	504	649	942	896	1 061	1 163	1 267
Total	9 900	9 465	9 949	9 746	9 253	13 157	19 214	19 116	24 351	24 386	24 503
<i>Western Europe</i>											
Austria	72	78	127	75	84	96	103	89	81	109	79
Belgium	60	52	59	66	68	91	67	77	68	69	97
France	247	237	219	202	253	313	351	323	300	312	305
Germany	709	738	781	801	697	759	806	844	953	963	996
Liechtenstein	-	-	-	-	2	-	1	-	-	1	-
Luxembourg	3	3	2	1	-	1	1	4	4	4	2
Monaco	-	1	-	-	1	2	-	-	2	-	-
Netherlands	364	344	438	407	427	397	432	471	523	548	577
Switzerland	182	183	208	181	180	216	183	198	232	155	234
Total	1 637	1 636	1 834	1 733	1 712	1 875	1 944	2 006	2 163	2 161	2 290

(a) The Australia component consists of persons born in Australia who have settled overseas and returned.

Australia

Table 1.2 (continued) Settler arrivals by birthplace, 1997-98 to 2007-08

Birthplace	1997-98	1998-99	1999-00	2000-01	2001-02	2002-03	2003-04	2004-05	2005-06	2006-07	2007-08
<i>Northern Europe</i>											
Denmark	100	80	80	104	114	88	97	103	93	90	85
Faroe Islands	-	-	-	-	-	1	-	-	-	1	-
Finland	37	45	30	51	42	34	52	54	67	52	65
Greenland	-	-	-	1	-	-	-	-	1	-	-
Iceland	1	3	3	4	2	1	4	3	-	12	7
Norway	28	24	41	30	25	56	55	53	69	61	48
Sweden	116	85	117	110	138	148	201	163	151	133	174
<i>Total</i>	<i>282</i>	<i>237</i>	<i>271</i>	<i>300</i>	<i>321</i>	<i>328</i>	<i>409</i>	<i>376</i>	<i>381</i>	<i>349</i>	<i>379</i>
<i>Southern Europe</i>											
Andorra	-	-	-	-	-	-	-	-	-	-	2
Gibraltar	3	9	3	1	1	2	3	7	4	6	10
Italy	201	197	168	181	267	139	186	195	187	204	180
Malta	39	40	41	40	28	54	58	92	38	100	99
Portugal	43	39	47	35	34	41	44	62	40	44	60
Spain	60	53	40	72	65	92	88	95	91	134	100
<i>Total</i>	<i>346</i>	<i>338</i>	<i>299</i>	<i>329</i>	<i>395</i>	<i>328</i>	<i>379</i>	<i>451</i>	<i>360</i>	<i>488</i>	<i>451</i>
<i>South Eastern Europe</i>											
Albania	78	57	58	64	77	280	124	115	130	94	93
Bosnia & Herzegovina (b)	2 135	1 389	672	759	403	160	126	108	115	110	111
Bulgaria	64	133	120	143	106	82	108	116	83	95	105
Croatia (b)	1 024	1 097	1 026	1 296	616	321	137	67	89	99	94
Cyprus	78	59	45	62	44	30	63	41	43	38	32
Fmr Yugo Rep of											
Macedonia (b)	433	411	295	475	389	393	373	310	357	312	356
Greece	204	142	101	92	108	106	99	85	112	81	84
Moldava	6	3	2	-	10	8	31	12	22	15	30
Montenegro (b)	-	-	-	-	-	-	-	-	-	3	12
Romania	246	342	306	289	271	300	289	286	300	310	272
Serbia (b)	-	-	-	-	-	-	-	-	-	34	169
Fmr Serbia & Montenegro (b)	-	2 912	2 356	2 343	2 082	1 633	931	671	509	535	334
Slovenia (b)	42	21	13	19	4	6	12	6	21	36	58
Former Yugoslavia nfd (b)	1 550	-	-	-	-	-	-	-	-	-	-
<i>Total</i>	<i>5 860</i>	<i>6 566</i>	<i>4 994</i>	<i>5 542</i>	<i>4 110</i>	<i>3 319</i>	<i>2 293</i>	<i>1 817</i>	<i>1 781</i>	<i>1 762</i>	<i>1 750</i>
<i>Eastern Europe</i>											
Belarus (c)	13	12	16	18	9	13	20	46	47	37	20
Czech Republic (d)	30	11	22	13	22	12	13	22	39	52	42
Estonia (c)	2	3	7	10	21	16	13	14	10	14	14
Former Czechoslovakia (d)	39	104	101	113	134	127	126	113	105	103	98
Hungary	81	59	84	56	79	81	108	119	111	136	142
Latvia (c)	19	13	17	21	18	29	27	30	29	20	23
Lithuania (c)	4	18	23	16	25	18	30	38	22	21	27
Poland	308	290	222	256	232	271	334	354	338	278	329
Russian Federation (c)	180	52	65	88	87	93	222	396	444	338	463
Slovakia (d)	30	7	16	10	12	15	30	18	24	28	31
Ukraine	277	46	78	87	100	107	203	200	202	205	180
Eastern Europe nfd	-	-	-	-	-	-	1	-	-	-	-
<i>Total</i>	<i>983</i>	<i>615</i>	<i>651</i>	<i>688</i>	<i>739</i>	<i>782</i>	<i>1 127</i>	<i>1 350</i>	<i>1 371</i>	<i>1 232</i>	<i>1 369</i>
Total Europe	19 008	18 857	17 998	18 338	16 530	19 789	25 366	25 116	30 407	30 378	30 742

(b) As reliable data are not available for component countries prior to 1995-96, care should be taken when interpreting the data. Serbia and Montenegro was previously called the Federal Republic of Yugoslavia and since 1998-99 contains the Former Yugoslavia nfd.

(c) As reliable data are not available for component countries prior to 1995-96, care should be taken when interpreting the data.

(d) As reliable data are not available for component countries prior to 1995-96, care should be taken when interpreting the data.

Australia

Table 1.2 (continued) **Settler arrivals by birthplace, 1997-98 to 2007-08**

Birthplace	1997-98	1998-99	1999-00	2000-01	2001-02	2002-03	2003-04	2004-05	2005-06	2006-07	2007-08
North Africa & The Middle East											
<i>North Africa</i>											
Algeria	35	32	25	59	34	36	29	28	27	16	24
Egypt	310	358	360	423	354	551	736	857	812	756	627
Libya	15	8	12	18	9	19	24	18	20	19	24
Morocco	24	25	31	18	24	41	39	41	45	49	53
Sudan	430	566	594	1 145	1 078	2 775	4 591	5 654	3 783	2 513	1 018
Tunisia	11	11	5	9	6	22	5	4	9	10	10
North Africa nfd	-	1	-	-	1	-	-	-	-	-	-
Total	825	1 001	1 027	1 672	1 506	3 444	5 424	6 602	4 696	3 363	1 756
<i>The Middle East</i>											
Bahrain	20	9	12	13	21	22	14	32	28	34	27
Gaza Strip & West Bank	5	16	24	15	22	4	16	5	5	11	6
Iran	693	525	797	907	600	819	843	966	897	1 077	1 101
Iraq	1 793	1 510	1 673	1 629	1 372	2 819	1 903	1 936	2 425	2 213	2 319
Israel	142	126	105	114	169	253	318	383	322	327	274
Jordan	112	138	121	180	118	156	189	237	201	152	162
Kuwait	123	106	197	107	58	128	95	92	137	120	137
Lebanon	1 107	944	1 226	1 498	1 100	1 613	1 293	1 447	1 286	1 390	1 425
Oman	11	14	12	13	14	16	11	21	29	25	22
Qatar	12	10	9	18	17	7	13	11	14	27	24
Saudi Arabia	70	42	48	54	51	61	54	87	67	88	96
Syria	171	166	182	214	176	227	211	231	239	240	227
Turkey	635	521	513	423	617	729	707	624	526	334	393
United Arab Emirates	63	49	54	50	121	200	161	219	240	243	259
Yemen	7	12	18	18	13	25	38	9	6	22	12
Middle East nfd	-	5	13	17	25	27	31	59	35	24	37
Total	4 964	4 193	5 004	5 270	4 494	7 106	5 897	6 359	6 457	6 327	6 521
Total North Africa & the Middle East	5 789	5 194	6 031	6 942	6 000	10 550	11 321	12 961	11 153	9 690	8 277
Southeast Asia											
Brunei	27	39	33	61	40	53	63	56	49	35	36
Burma (Myanmar)	170	142	156	223	248	188	185	417	690	1 629	2 101
Cambodia	505	322	250	464	480	617	561	630	625	724	710
East Timor (e)	-	-	-	19	18	23	32	30	43	23	34
Indonesia (e)	1 917	2 491	2 943	3 921	4 221	3 026	2 584	1 930	1 853	1 704	1 788
Laos	30	41	17	68	39	41	44	114	66	112	83
Malaysia	931	1 296	1 771	2 222	1 939	2 686	3 718	2 936	2 967	2 899	3 522
Philippines	2 769	3 318	3 186	3 123	2 837	3 190	4 111	4 239	4 871	5 561	6 112
Singapore	694	650	884	1 361	1 493	1 751	2 224	3 036	2 685	1 658	1 815
Thailand	346	498	527	697	1 230	1 133	1 065	1 277	1 568	1 989	2 278
Vietnam	2 311	2 137	1 502	1 639	1 919	2 568	2 212	2 203	2 661	3 135	2 685
Total Southeast Asia	9 700	10 934	11 269	13 798	14 464	15 276	16 799	16 868	18 078	19 469	21 164

(e) East Timor previously recorded under Indonesia, care should be taken when interpreting the data.

Australia

Table 1.2 (continued) Settler arrivals by birthplace, 1997-98 to 2007-08

Birthplace	1997-98	1998-99	1999-00	2000-01	2001-02	2002-03	2003-04	2004-05	2005-06	2006-07	2007-08
Northeast Asia											
China (f)	4 338	6 133	6 809	8 762	6 708	6 664	8 784	11 095	10 581	12 009	12 959
Hong Kong (g)	3 194	1 918	1 467	1 541	931	1 029	1 125	1 273	1 031	995	873
Japan	508	578	553	604	571	607	706	749	755	811	796
Korea	596	627	768	1 344	759	903	1 075	1 788	2 117	2 092	2 574
Macau (g)	57	56	43	28	29	25	26	31	21	18	15
Mongolia	3	1	2	3	3	11	5	15	15	20	19
Taiwan	1 518	1 556	1 699	2 599	1 715	1 109	881	776	752	671	746
Total Northeast Asia	10 214	10 869	11 341	14 881	10 716	10 348	12 602	15 727	15 272	16 616	17 982
Southern Asia											
Bangladesh	282	419	784	950	437	437	581	770	848	908	1 139
Bhutan	8	5	-	2	-	1	-	-	2	1	27
India	2 786	2 557	4 631	6 336	5 091	5 783	8 135	9 414	11 286	13 496	15 338
Maldives	1	5	1	1	8	3	7	10	7	7	23
Nepal	36	33	114	228	166	176	235	302	304	460	607
Pakistan	435	613	892	1 256	831	770	1 099	1 348	1 234	1 446	1 376
Sri Lanka	1 261	917	1 280	2 043	2 011	1 845	1 551	2 312	2 361	2 721	3 619
Total Southern Asia	4 809	4 549	7 702	10 816	8 544	9 015	11 608	14 156	16 042	19 039	22 129
Central Asia											
Afghanistan	524	767	745	474	646	964	1 221	1 531	2 547	2 186	1 693
Armenia (d)	27	6	12	3	7	23	15	6	6	11	8
Azerbaijan (d)	4	2	12	2	10	4	9	12	13	8	3
Georgia (d)	6	1	15	10	9	8	5	6	3	10	10
Kazakhstan (d)	31	9	17	25	13	18	41	35	45	39	57
Kyrgyzstan (d)	8	3	6	2	7	10	25	24	23	18	23
Tajikistan (d)	1	-	1	1	2	2	-	2	5	3	1
Turkmenistan (d)	-	-	-	1	1	3	2	2	6	8	2
Uzbekistan (d)	15	7	8	15	17	11	31	35	82	50	47
Total Central Asia	616	795	816	533	712	1 043	1 349	1 653	2 730	2 333	1 844
Northern America											
Bermuda	10	3	5	7	8	8	2	4	5	1	2
Canada	775	581	673	730	586	643	615	679	781	723	715
USA	1 264	1 040	1 061	1 212	1 136	1 324	1 359	1 578	1 655	1 621	1 467
Total Northern America	2 049	1 624	1 739	1 949	1 730	1 975	1 976	2 261	2 441	2 345	2 184

(d) As reliable data are not available for component countries prior to 1995-96, care should be taken when interpreting the data.

(f) Excluding SARs and Taiwan.

(g) SAR of China.

Australia

Table 1.2 (continued) **Settler arrivals by birthplace, 1997-98 to 2007-08**

Birthplace	1997-98	1998-99	1999-00	2000-01	2001-02	2002-03	2003-04	2004-05	2005-06	2006-07	2007-08
South America, Central America & the Caribbean											
<i>South America</i>											
Argentina	60	65	59	79	78	167	337	325	233	134	125
Bolivia	6	20	15	20	14	15	18	11	16	11	22
Brazil	56	96	104	110	154	208	194	334	356	400	435
Chile	139	186	135	132	143	187	183	181	166	147	170
Colombia	62	90	85	118	146	209	183	225	220	232	268
Ecuador	9	11	18	31	23	38	49	45	48	28	42
Falkland Islands	2	1	-	-	1	-	2	1	2	1	1
French Guiana	-	1	-	1	-	-	1	-	-	-	-
Guyana	2	3	10	9	-	5	7	-	10	7	6
Paraguay	2	6	4	5	12	4	4	4	16	3	5
Peru	69	96	96	122	111	171	151	195	296	306	250
Suriname	-	1	-	-	-	7	4	1	2	3	3
Uruguay	19	23	12	21	27	54	57	65	64	31	39
Venezuela	59	35	30	40	37	52	58	120	171	151	258
South America nfd	-	-	-	-	2	-	-	-	-	1	1
Total	485	634	568	688	748	1 117	1 248	1 507	1 600	1 455	1 625
<i>Central America</i>											
Belize	2	-	1	1	-	1	1	-	-	-	1
Costa Rica	8	1	3	2	7	4	-	4	13	4	7
El Salvador	65	37	24	29	27	22	21	31	29	20	47
Guatemala	2	6	6	10	9	2	8	2	6	14	10
Honduras	1	3	-	-	4	3	3	4	5	4	7
Mexico	34	31	30	30	40	68	51	76	148	144	237
Nicaragua	2	5	2	-	3	2	-	1	6	9	7
Panama	2	4	5	3	2	2	4	6	9	2	6
Central America nfd	1	-	2	1	-	-	1	-	-	2	-
Total	117	87	73	76	92	104	89	124	216	199	322
<i>The Caribbean</i>											
Anguilla	1	-	-	-	-	-	-	-	-	-	-
Antigua And Barbuda	-	-	-	-	-	-	-	-	2	2	-
Aruba	1	-	1	-	-	-	-	-	-	-	-
Bahamas	2	2	2	3	2	3	6	3	1	2	3
Barbados	6	3	1	8	1	4	3	3	6	5	10
Cayman Islands	2	2	-	2	3	-	2	3	1	5	6
Cuba	4	14	8	14	17	16	20	18	26	21	36
Dominica	-	-	-	-	-	-	2	2	-	-	2
Dominican Republic	2	5	2	4	5	3	5	5	5	4	8
Grenada	1	-	2	-	-	1	1	1	3	-	2
Guadeloupe	-	-	-	-	2	2	-	1	-	-	-
Haiti	3	3	1	-	6	1	1	-	3	-	1
Jamaica	24	9	10	22	10	7	13	23	21	21	17
Martinique	-	-	2	-	-	-	-	-	-	-	-
Montserrat	-	-	-	-	-	-	-	-	2	-	2
Netherlands Antilles	-	1	-	1	5	1	-	1	4	1	1
Puerto Rico	-	2	1	1	2	2	1	1	1	3	3

Australia

Table 1.2 (continued) Settler arrivals by birthplace, 1997-98 to 2007-08

Birthplace	1997-98	1998-99	1999-00	2000-01	2001-02	2002-03	2003-04	2004-05	2005-06	2006-07	2007-08
<i>The Caribbean (continued)</i>											
St Kitts And Nevis	-	-	-	-	-	1	-	-	-	-	2
St Lucia	1	1	-	-	-	-	-	2	3	3	1
St Vincent And The Grenadine:	-	-	1	-	-	-	-	-	1	-	-
Trinidad And Tobago	18	10	8	14	7	5	26	24	14	21	14
Turks And Caicos Islands	-	-	-	-	-	-	-	-	1	-	-
Virgin Islands British	-	-	-	-	-	-	-	1	-	-	-
Virgin Islands United States	-	-	-	-	-	-	1	-	1	-	-
Caribbean nfd	-	-	-	-	-	-	-	1	-	2	-
Total	65	52	39	69	60	46	81	89	95	90	108
Total South America, Central America & The Caribbean	667	773	680	833	900	1 267	1 418	1 720	1 911	1 744	2 055
Sub-Saharan Africa											
<i>Central & West Africa</i>											
Benin	1	-	-	-	-	-	-	2	1	11	23
Burkina Faso	-	-	-	-	3	1	1	-	-	1	2
Cameroon	1	1	2	-	4	9	4	4	5	11	29
Cape Verde	1	-	-	-	-	-	-	-	1	1	2
Central African Republic	-	-	-	-	-	-	-	1	-	1	13
Chad	-	-	-	-	-	-	-	1	2	4	4
Congo	-	3	3	20	8	23	137	276	91	103	32
Congo Democratic Republic	4	7	3	4	8	8	26	21	155	569	474
Cote D'Ivoire	3	2	1	2	-	5	2	111	55	83	77
Gabon	-	-	-	1	1	-	-	2	1	-	1
Gambia	2	4	-	-	1	3	-	2	4	6	3
Ghana	87	137	94	84	76	95	137	143	217	245	180
Guinea	1	1	1	4	8	25	16	152	101	147	87
Guinea-Bissau	-	-	-	-	3	1	-	-	1	-	-
Liberia	4	2	-	18	113	145	114	851	564	539	255
Mali	-	-	1	-	-	1	1	1	1	-	1
Mauritania	-	1	-	-	-	-	-	1	3	3	42
Niger	15	1	7	7	6	1	1	2	9	6	3
Nigeria	43	82	56	86	126	89	102	111	160	187	185
Senegal	8	2	6	2	11	6	4	7	12	6	54
Sierra Leone	5	6	61	127	328	174	132	642	532	519	276
Togo	-	-	-	3	1	1	2	8	3	49	99
Total	175	249	235	358	697	587	679	2 338	1 918	2 491	1 842
<i>Southern & East Africa</i>											
Angola	1	3	5	2	10	3	1	3	3	12	4
Botswana	70	12	10	19	16	26	27	29	24	36	21
Burundi	-	1	1	5	5	8	51	259	442	440	228
Comoros	-	-	-	3	-	1	-	-	-	3	-
Djibouti	1	9	5	7	6	6	2	9	1	6	3
Eritrea (h)	67	187	142	137	133	109	148	125	168	138	128
Ethiopia (h)	280	371	357	397	396	570	718	586	429	575	466
Kenya	165	297	231	256	413	574	617	806	648	701	459
Lesotho	-	-	-	2	7	3	1	8	2	4	-
Madagascar	-	7	4	4	5	8	3	1	4	6	5
Malawi	3	15	9	14	32	19	32	40	17	35	39

(h) As reliable data are not available for component countries prior to 1995-96, care should be taken when interpreting the data.

Australia

Table 1.2 (continued) **Settler arrivals by birthplace, 1997-98 to 2007-08**

Birthplace	1997-98	1998-99	1999-00	2000-01	2001-02	2002-03	2003-04	2004-05	2005-06	2006-07	2007-08
<i>Southern & East Africa</i> (continued)											
Mauritius	84	64	118	138	153	170	238	227	260	308	388
Mozambique	17	10	7	14	18	21	20	15	8	13	18
Namibia	17	27	27	37	39	48	23	53	39	36	28
Reunion	-	5	5	-	2	-	2	1	3	1	1
Rwanda	-	1	2	1	3	14	44	47	68	93	54
St Helena	-	-	-	-	-	1	-	1	1	-	-
Seychelles	6	17	19	1	32	20	36	25	27	36	18
Somalia	688	507	284	319	359	203	221	246	264	296	156
South Africa	4 281	5 024	5 691	5 754	5 714	4 603	5 849	4 594	3 953	3 996	5 166
Swaziland	7	12	8	8	6	6	11	3	10	6	4
Tanzania	27	20	16	13	26	24	55	176	405	344	291
Uganda	14	15	17	22	48	71	98	185	161	277	155
Zambia	79	72	90	84	123	77	129	98	93	127	109
Zimbabwe	273	322	573	720	1 068	1 197	1 620	1 258	1 104	935	1 019
Southern & East Africa nfd	2	-	1	1	-	1	1	-	-	-	1
Total	6 082	6 998	7 622	7 958	8 614	7 783	9 947	8 795	8 134	8 424	8 761
Total											
Sub-Saharan Africa	6 257	7 247	7 857	8 316	9 311	8 370	10 626	11 133	10 052	10 915	10 603
Supplementary codes (i)											
Europe & USSR nfd	-	1	-	-	-	-	-	-	-	-	-
Fmr USSR	401	723	727	788	815	740	660	687	699	505	556
Total	401	724	727	788	815	740	660	687	699	505	556
Not stated	25	76	73	38	26	24	46	11	31	53	132
Total all countries	77 327	84 143	92 272	107 366	88 900	93 914	111 590	123 424	131 593	140 148	149 365

(i) Supplementary codes which cannot be classified to any major region in the Standard Australian Classification of Countries (SACC). This may lead to under reporting of their component countries in the rest of the table, care should be taken when interpreting the data.

Australia

Table 1.3 Settler arrivals by state or territory of intended residence and sex, 1994-95 to 2007-08

Financial Year	State or Territory of intended residence (a)								
	New South Wales	Victoria	Queensland	South Australia	Western Australia	Tasmania	Northern Territory	Australian Capital Territory	Australia (b)
	Males								
1994-95	17 754	9 340	6 134	1 747	4 884	269	200	456	40 789
1995-96	19 566	10 051	7 108	1 800	5 413	266	190	425	44 831
1996-97	17 565	8 570	6 973	1 641	5 253	205	234	426	40 877
1997-98	15 145	7 623	7 380	1 498	4 922	181	208	305	37 278
1998-99	16 961	8 113	7 800	1 598	5 310	228	220	339	40 573
1999-00	19 309	9 431	8 502	1 504	5 734	214	225	394	45 322
2000-01	23 351	11 953	9 743	1 599	5 699	275	217	536	53 386
2001-02	16 994	10 506	7 553	1 630	5 323	286	183	515	42 993
2002-03	17 388	10 873	7 707	1 759	5 998	395	206	421	44 750
2003-04	19 521	13 527	9 741	2 362	7 463	405	259	509	53 787
2004-05	21 315	14 770	10 940	3 188	7 989	454	277	561	59 495
2005-06	21 242	15 334	11 890	4 443	8 570	425	338	607	62 852
2006-07	20 471	16 305	13 757	4 896	9 714	453	357	554	66 509
2007-08	20 650	17 620	15 805	4 791	11 266	503	369	670	71 675
	Females								
1994-95	20 302	10 628	7 045	2 035	5 495	283	296	545	46 639
1995-96	24 761	12 218	8 176	2 042	5 905	290	304	596	54 308
1996-97	19 647	9 696	7 667	1 695	5 265	226	256	407	44 875
1997-98	16 549	8 610	7 715	1 571	4 819	188	227	352	40 049
1998-99	18 180	9 178	8 228	1 722	5 362	214	254	424	43 570
1999-00	20 002	9 888	8 784	1 601	5 778	230	246	415	46 950
2000-01	23 394	12 206	9 792	1 584	5 866	289	255	579	53 980
2001-02	18 307	10 868	8 272	1 686	5 631	303	276	560	45 907
2002-03	19 043	12 236	8 475	1 898	6 281	416	277	536	49 164
2003-04	21 040	14 501	10 543	2 411	7 948	479	337	541	57 803
2004-05	23 431	15 811	11 720	3 176	8 329	490	315	656	63 929
2005-06	23 419	16 963	12 972	4 656	9 068	454	442	765	68 741
2006-07	23 364	18 393	14 883	5 165	10 069	515	486	757	73 639
2007-08	22 870	19 593	16 691	5 105	11 472	589	519	848	77 690
	Persons								
1994-95	38 056	19 968	13 179	3 782	10 379	552	496	1 001	87 428
1995-96	44 327	22 269	15 284	3 842	11 318	556	494	1 021	99 139
1996-97	37 212	18 266	14 640	3 336	10 518	431	490	833	85 752
1997-98	31 694	16 233	15 095	3 069	9 741	369	435	657	77 327
1998-99	35 141	17 291	16 028	3 320	10 672	442	474	763	84 143
1999-00	39 311	19 319	17 286	3 105	11 512	444	471	809	92 272
2000-01	46 745	24 159	19 535	3 183	11 565	564	472	1 115	107 366
2001-02	35 301	21 374	15 825	3 316	10 954	589	459	1 075	88 900
2002-03	36 431	23 109	16 182	3 657	12 279	811	483	957	93 914
2003-04	40 561	28 028	20 284	4 773	15 411	884	596	1 050	111 590
2004-05	44 746	30 581	22 660	6 364	16 318	944	592	1 217	123 424
2005-06	44 661	32 297	24 862	9 099	17 638	879	780	1 372	131 593
2006-07	43 835	34 698	28 640	10 061	19 783	968	843	1 311	140 148
2007-08	43 520	37 213	32 496	9 896	22 738	1 092	888	1 518	149 365

(a) Based on stated intention at time of arrival only. There can be no guarantee that the settler actually settled in this State/Territory.

(b) Includes not stated. From 1994-95 also includes Other Territories which comprise Christmas Island, Cocos (Keeling) Islands and Jervis Bay. Previously published as Table 2.2 in Consolidated Statistics (ceased publication 2000).

Australia

Table 1.4 Permanent movements by age, 1994-95 to 2007-08

Financial Year	Age group (years)									Total
	0-9	10-19	0-19 Total	20-29	30-39	40-49	50-59	20-59 Total	60+	
Settler arrivals										
1994-95	15 805	10 927	26 732	22 935	21 303	8 106	3 832	56 176	4 520	87 428
1995-96	17 363	13 525	30 888	23 202	22 742	10 172	5 526	61 642	6 609	99 139
1996-97	14 891	12 200	27 091	19 419	19 583	9 473	4 743	53 218	5 443	85 752
1997-98	14 589	11 462	26 051	17 605	19 075	8 314	3 314	48 308	2 968	77 327
1998-99	14 673	11 775	26 448	20 338	21 077	9 160	3 718	54 293	3 402	84 143
1999-00	16 164	13 188	29 352	22 083	23 483	10 814	3 597	59 977	2 943	92 272
2000-01	18 733	15 221	33 954	26 259	26 582	13 083	4 408	70 332	3 080	107 366
2001-02	14 680	13 012	27 692	23 124	21 833	10 580	3 463	59 000	2 208	88 900
2002-03	15 826	13 839	29 665	24 225	23 531	11 207	3 339	62 302	1 947	93 914
2003-04	20 005	15 736	35 741	25 939	29 177	13 553	4 046	72 715	3 134	111 590
2004-05	22 417	17 033	39 450	28 730	31 481	14 206	5 089	79 506	4 468	123 424
2005-06	24 257	18 066	42 323	30 760	33 976	15 736	4 998	85 470	3 800	131 593
2006-07	25 775	20 003	45 778	33 147	34 908	17 142	5 292	90 489	3 881	140 148
2007-08	26 860	20 610	47 470	35 909	37 000	18 636	5 992	97 537	4 358	149 365
Australian ^(a) born departures										
1994-95	3 006	898	3 904	2 370	2 172	1 096	370	6 008	182	10 094
1995-96	3 215	977	4 192	2 509	2 499	1 194	430	6 632	189	11 013
1996-97	3 231	980	4 211	2 833	2 728	1 270	476	7 307	186	11 704
1997-98	3 505	1 056	4 561	3 081	2 991	1 440	532	8 044	184	12 789
1998-99	3 230	1 195	4 425	4 124	4 810	2 340	1 193	12 467	372	17 264
1999-00	3 673	1 435	5 108	4 661	5 671	2 908	1 426	14 666	491	20 265
2000-01	3 992	1 612	5 604	5 259	6 774	3 367	1 658	17 058	455	23 117
2001-02	4 028	1 633	5 661	5 141	7 403	3 651	1 772	17 967	542	24 170
2002-03	4 183	1 767	5 950	5 047	8 104	4 003	1 953	19 107	555	25 612
2003-04	4 875	2 128	7 003	5 470	9 002	4 569	2 342	21 383	754	29 140
2004-05	5 140	2 100	7 240	5 970	9 789	4 703	2 577	23 039	748	31 027
2005-06	5 327	2 370	7 697	6 680	10 897	5 273	2 873	25 723	864	34 284
2006-07	5 651	2 373	8 024	7 402	11 839	5 656	3 016	27 913	945	36 882
2007-08	5 872	2 431	8 303	7 748	12 534	6 182	3 234	29 698	1 143	39 144
Overseas born departures										
1994-95	1 394	1 536	2 930	3 558	4 738	2 681	1 303	12 280	1 644	16 854
1995-96	1 444	1 614	3 058	3 615	5 060	2 884	1 353	12 912	1 687	17 657
1996-97	1 530	1 664	3 194	3 492	4 987	3 067	1 502	13 048	1 911	18 153
1997-98	1 590	1 707	3 297	3 571	5 355	3 294	1 716	13 936	1 963	19 196
1998-99	1 718	1 407	3 125	3 002	4 708	3 471	1 916	13 097	1 695	17 917
1999-00	1 943	1 715	3 658	3 247	5 450	4 193	2 321	15 211	1 944	20 813
2000-01	2 080	1 862	3 942	3 875	6 048	4 877	2 681	17 481	1 981	23 404
2001-02	2 191	1 844	4 035	4 106	6 263	5 000	2 674	18 043	1 993	24 071
2002-03	2 348	1 927	4 275	4 190	6 181	5 122	2 975	18 468	2 108	24 851
2003-04	2 586	2 248	4 834	4 764	7 348	6 548	3 818	22 478	2 626	29 938
2004-05	2 740	2 319	5 059	5 124	7 764	6 862	4 054	23 804	2 716	31 579
2005-06	3 033	2 549	5 582	5 410	7 965	7 320	4 387	25 082	2 905	33 569
2006-07	3 374	2 434	5 808	5 787	8 350	7 267	4 674	26 078	3 335	35 221
2007-08	3 730	2 680	6 410	6 427	8 733	7 535	5 048	27 743	3 626	37 779

(a) Includes Australian External Territories.

Previously published as Table 2.5 in Consolidated Statistics (ceased publication 2000).

Australia

Table 1.5 Settler arrivals by eligibility category^(a), 1997-98 to 2007-08

Eligibility category	Financial Year											
	1997-98	1998-99	1999-00	2000-01	2001-02	2002-03	2003-04	2004-05	2005-06	2006-07	2007-08	
Family												
- Preferential												
Spouses	13 141	13 563	13 124	13 148	15 977	19 196	18 337	19 350	21 231	22 789	23 149	
Fiancées	2 915	2 952	3 073	3 379	3 841	5 118	5 122	5 675	6 168	6 632	6 538	
Parents	1 812	2 201	1 177	1 068	545	375	2 520	4 865	3 848	3 657	4 118	
Dependent Child (b)	1 520	1 252	1 122	1 138	1 199	1 305	1 422	1 312	1 442	1 777	2 083	
Child for Adoption	272	296	310	304	332	379	459	410	441	437	381	
Other	1 482	1 237	1 090	1 108	1 450	1 693	1 688	1 570	1 641	1 846	2 135	
Total	21 142	21 501	19 896	20 145	23 344	28 066	29 548	33 182	34 771	37 138	38 404	
Skill												
- Australian Sponsored (c)	7,355	8 409	8 882	6 743	4 586	4 505	6 285	6 907	7 695	5 039	6 146	
- Regional Designated Area Sponsored (c)	120	57	139	830	1 374	2 392	6 954	6 441	7 799	7 480	5 184	
- Employer Nomination Scheme	2 172	1 628	1 212	1 307	1 817	1 748	2 044	2 481	3 092	3 469	4 263	
- Business Skills	5 086	5 433	5 631	5 600	6 409	5 421	5 072	4 813	4 237	4 881	5 370	
- Distinguished Talents	104	87	67	80	72	63	90	91	51	89	114	
- Independent	11 132	12 198	16 373	21 113	21 583	23 895	29 699	29 540	29 893	32 516	36 826	
- STNI (d)	16	119	46	42	195	480	1,384	2,365	3,714	3 675	3 435	
- Skilled Independent Regional (e)	495	3 026	3 606	4 066	
Total	25 985	27 931	32 350	35 715	36 036	38 504	51 528	53 133	59 507	60 755	65 404	
Special Eligibility	217	175	131	127	176	178	207	162	104	109	131	
Humanitarian												
- Refugees	3 553	3 269	3 429	4 142	3 525	3 882	3 130	5 278	5 190	6 231	5 696	
- Humanitarian	3 033	4 614	3 022	2 706	3 003	5 686	7 205	7 957	6 923	6 016	3 811	
- Special Assistance	2 193	907	816	792	204	1	-	-	-	-	-	
Total	8 779	8 790	7 267	7 640	6 732	9 569	10 335	13 235	12 113	12 247	9 507	
Non-program migration												
- New Zealand Citizens	19 393	24 680	31 610	42 257	21 458	16 364	18 717	22 379	23 781	28 307	34 491	
- Other	1 811	1 066	1 018	1 482	1 154	1 233	1 254	1 333	1 317	1 592	1 428	
Total	21 204	25 746	32 628	43 739	22 612	17 597	19 971	23 712	25 098	29 899	35 919	
Total persons	77 327	84 143	92 272	107 366	88 900	93 914	111 589	123 424	131 593	140 148	149 365	

(a) Migration eligibility categories have changed during the period. The allocation of settlers to categories is based on assumptions, to align as closely as possible past policies with current policy. Comparisons between years are therefore indicative only.

(b) From 1 July 2006 the Dependent child extended eligibility category was included in settler arrivals data (361 arrivals in 2006-07).

(c) Data based on visa subclass at time of arrival.

(d) State Territory Nominated Independent.

(e) Implemented 1 July 2004.

Previously published as Table 2.7 in Consolidated Statistics (ceased publication 2000).

Australia

Table 1.6 Settler arrivals by eligibility category^(a) and state or territory of intended residence, 1995-96 to 2007-08

Financial Year	State or Territory of intended residence (b)								
	New South Wales	Victoria	Queensland	South Australia	Western Australia	Tasmania	Northern Territory	Australian Capital Territory	Australia (c)
Family									
1995-96	22 716	11 838	4 604	1 744	4 494	206	255	585	46 458
1996-97	17 358	9 133	3 737	1 508	3 951	193	231	363	36 490
1997-98	9 870	5 575	2 411	919	1 861	113	155	225	21 142
1998-99	10 480	5 439	2 370	845	1 862	100	161	238	21 501
1999-00	9 425	4 937	2 321	825	1 864	150	137	232	19 896
2000-01	9 358	5 071	2 418	830	1 928	146	137	248	20 145
2001-02	10 297	6 165	3 022	994	2 192	155	205	307	23 344
2002-03	12 306	7 756	3 453	1 243	2 525	194	214	370	28 066
2003-04	12 766	7 981	3 893	1 240	2 839	220	228	378	29 548
2004-05	14 658	8 926	4 185	1 339	3 235	210	224	403	33 182
2005-06	15 220	9 203	4 511	1 502	3 372	257	229	473	34 771
2006-07	15 447	10 147	4 969	1 769	3 762	237	290	508	37 138
2007-08	15 911	10 501	5 054	1 762	4 094	283	313	484	38 404
Skill									
1995-96	8 960	3 199	3 213	845	3 458	70	85	168	20 008
1996-97	8 805	3 057	3 155	765	3 524	52	111	227	19 697
1997-98	11 287	4 537	3 578	1 157	4 966	66	149	230	25 985
1998-99	12 194	4 898	3 643	1 247	5 454	96	155	242	27 931
1999-00	13 796	6 333	3 925	1 243	6 506	107	156	281	32 350
2000-01	15 390	7 996	4 426	967	6 250	98	140	446	35 715
2001-02	14 267	8 582	4 803	1 257	6 431	141	110	445	36 036
2002-03	14 687	9 163	5 204	1 332	7 477	177	122	342	38 504
2003-04	18 040	13 161	7 421	2 278	9 850	189	159	430	51 528
2004-05	18 951	13 496	7 243	3 320	9 166	313	154	490	53 133
2005-06	18 644	15 167	8 101	5 987	10 452	317	274	565	59 507
2006-07	17 094	15 680	8 899	6 518	11 353	371	308	532	60 755
2007-08	17 317	17 394	10 132	6 608	12 542	395	338	677	65 404
Special Eligibility									
1995-96	181	115	113	29	70	2	-	1	511
1996-97	160	66	73	15	69	1	1	8	393
1997-98	70	47	46	23	28	-	-	3	217
1998-99	61	40	37	8	25	3	-	1	175
1999-00	46	31	11	18	23	-	2	-	131
2000-01	27	45	9	15	26	5	-	-	127
2001-02	30	41	38	14	50	1	2	-	176
2002-03	55	45	26	21	29	2	-	-	178
2003-04	62	44	40	11	48	2	-	-	207
2004-05	51	31	28	19	31	-	1	1	162
2005-06	35	23	15	10	19	2	-	-	104
2006-07	31	43	19	4	11	-	-	1	109
2007-08	44	37	28	3	11	4	-	4	131

(a) Migration eligibility categories have changed during the period. The allocation of settlers to categories is based on assumptions, to align as closely as possible past policies with current policy. Comparisons between years are therefore indicative only.

(b) Based on stated intention at time of arrival only. There can be no guarantee that the settler actually settled in this state.

(c) Includes not stated. From 1994-95 also includes Other Territories which comprise Christmas Island, Cocos (Keeling) Islands and Jervis Bay. Previously published as Table 2.8 in Consolidated Statistics (ceased production 2000).

Australia

Table 1.6 (continued) **Settler arrivals by eligibility category^(a) and State or Territory of intended residence, 1995-96 to 2007-08**

Financial Year	State or Territory of intended residence (b)								
	New South Wales	Victoria	Queensland	South Australia	Western Australia	Tasmania	Northern Territory	Australian Capital Territory	Australia (c)
	Humanitarian								
1995-96	5 843	4 359	902	815	1 647	94	45	119	13 824
1996-97	4 361	3 057	605	605	984	82	59	126	9 886
1997-98	3 720	2 781	718	527	831	108	48	46	8 779
1998-99	3 347	2 844	724	733	910	122	42	67	8 790
1999-00	3 097	2 122	550	494	854	37	46	66	7 267
2000-01	2 797	2 157	677	642	1 048	142	73	100	7 640
2001-02	2 519	1 907	626	558	749	197	57	119	6 732
2002-03	3 583	2 829	950	686	1 033	302	92	94	9 569
2003-04	3 507	3 189	990	844	1 243	351	107	104	10 335
2004-05	4 240	3 936	1 506	1 196	1 749	300	137	171	13 235
2005-06	4 269	3 433	1 432	1 072	1 367	200	152	188	12 113
2006-07	4 192	3 311	1 398	1 229	1 634	244	142	97	12 247
2007-08	2 958	2 787	976	835	1 440	237	94	180	9 507
	Non-program migration ^(d)								
1995-96	6 627	2 758	6 452	409	1 649	184	109	148	18 338
1996-97	6 528	2 953	7 070	443	1 990	103	88	109	19 286
1997-98	6 747	3 293	8 342	443	2 055	82	83	153	21 204
1998-99	9 059	4 070	9 254	487	2 421	121	116	215	25 746
1999-00	12 947	5 896	10 479	525	2 265	150	130	230	32 628
2000-01	19 173	8 890	12 005	729	2 313	173	122	321	43 739
2001-02	8 188	4 679	7 336	493	1 532	95	85	204	22 612
2002-03	5 800	3 316	6 549	375	1 215	136	55	151	17 597
2003-04	6 186	3 653	7 940	400	1 431	122	102	138	19 972
2004-05	6 846	4 192	9 698	490	2 137	121	76	152	23 712
2005-06	6 493	4 471	10 803	528	2 428	103	125	146	25 098
2006-07	7 071	5 517	13 355	541	3 023	116	103	173	29 899
2007-08	7 290	6 494	16 306	688	4 651	173	143	173	35 919
	Total								
1995-96	44 327	22 269	15 284	3 842	11 318	556	494	1 021	99 139
1996-97	37 212	18 266	14 640	3 336	10 518	431	490	833	85 752
1997-98	31 694	16 233	15 095	3 069	9 741	369	435	657	77 327
1998-99	35 141	17 291	16 028	3 320	10 672	442	474	763	84 143
1999-00	39 311	19 319	17 286	3 105	11 512	444	471	809	92 272
2000-01	46 745	24 159	19 535	3 183	11 565	564	472	1 115	107 366
2001-02	35 301	21 374	15 825	3 316	10 954	589	459	1 075	88 900
2002-03	36 431	23 109	16 182	3 657	12 279	811	483	957	93 914
2003-04	40 561	28 028	20 284	4 773	15 411	884	596	1 050	111 590
2004-05	44 746	30 581	22 660	6 364	16 318	944	592	1 217	123 424
2005-06	44 661	32 297	24 862	9 099	17 638	879	780	1 372	131 593
2006-07	43 835	34 698	28 640	10 061	19 783	968	843	1 311	140 148
2007-08	43 520	37 213	32 496	9 896	22 738	1 092	888	1 518	149 365

(a) Migration eligibility categories have changed during the period. The allocation of settlers to categories is based on assumptions, to align as closely as possible past policies with current policy. Comparisons between years are therefore indicative only.

(b) Based on stated intention at time of arrival only. There can be no guarantee that the settler actually settled in this state.

(c) Includes not stated. From 1994-95 also includes Other Territories which comprise Christmas Island, Cocos (Keeling) Islands and Jervis Bay.

(d) Includes New Zealand citizens and children born to Australian citizens overseas.

Previously published as Table 2.8 in Consolidated Statistics (ceased publication 2000).

New South Wales

Table 2.1 Settler arrivals by birthplace, 1997-98 to 2007-08

Birthplace	1997-98	1998-99	1999-00	2000-01	2001-02	2002-03	2003-04	2004-05	2005-06	2006-07	2007-08
Oceania											
<i>Australia & External Territories (a)</i>	152	108	171	247	211	166	162	230	254	182	225
<i>New Zealand</i>	4 220	5 944	7 682	9 419	5 103	3 810	4 088	4 567	4 482	5 240	5 233
<i>Melanesia</i>											
New Caledonia	2	9	4	2	1	2	-	4	3	1	1
Papua New Guinea	20	22	18	25	18	26	31	20	43	21	30
Solomon Islands	5	13	11	3	8	9	2	6	6	8	4
Vanuatu	8	-	2	15	8	5	1	7	8	9	4
<i>Total</i>	35	44	35	45	35	42	34	37	60	39	39
<i>Micronesia</i>											
Guam	-	1	-	2	-	2	-	1	-	-	-
Kiribati	-	1	5	-	-	-	-	-	-	-	-
Marshall Islands	-	-	1	-	-	-	-	-	2	-	-
Nauru	-	-	-	1	1	1	2	1	-	1	-
Northern Mariana Islands	-	-	-	-	-	-	-	-	-	-	1
<i>Total</i>	-	2	6	3	1	3	2	2	2	1	1
<i>Polynesia (excluding Hawaii)</i>											
Cook Islands	97	116	98	104	59	24	40	29	35	38	57
Fiji	601	1 009	1 221	1 374	1 014	1 022	901	1 058	1 046	819	901
French Polynesia	-	-	5	1	1	3	2	2	2	1	2
Niue	4	21	19	28	15	11	11	17	9	10	15
Samoa	481	583	531	684	405	238	283	310	264	169	168
Samoa American	1	2	3	8	2	1	1	6	3	-	4
Tokelau	7	13	14	15	26	6	18	16	23	7	5
Tonga	102	218	221	255	180	131	138	163	161	101	90
Tuvalu	1	-	3	1	-	-	1	2	-	-	-
<i>Total</i>	1 294	1 962	2 115	2 470	1 702	1 436	1 395	1 603	1 543	1 145	1 242
Total Oceania	5 701	8 060	10 009	12 184	7 052	5 457	5 681	6 439	6 341	6 607	6 740
Europe											
<i>United Kingdom & Ireland</i>											
UK	2 765	2 611	2 747	2 578	2 577	3 443	4 519	3 923	4 561	4 192	4 034
Ireland	355	377	409	357	235	320	384	398	386	381	404
<i>Total</i>	3 120	2 988	3 156	2 935	2 812	3 763	4 903	4 321	4 947	4 573	4 438
<i>Western Europe</i>											
Austria	30	29	44	20	15	36	41	18	24	36	29
Belgium	31	18	22	23	24	36	29	24	18	14	28
France	116	110	118	96	99	131	156	120	119	112	128
Germany	263	259	284	274	250	263	312	255	247	242	279
Liechtenstein	-	-	-	-	-	-	1	-	-	-	-
Luxembourg	-	-	-	-	-	1	1	1	-	-	-
Monaco	-	1	-	-	-	2	-	-	1	-	-
Netherlands	108	82	118	146	143	125	130	122	130	105	114
Switzerland	69	66	69	68	48	76	71	58	68	42	66
<i>Total</i>	617	565	655	627	579	670	741	598	607	551	644

(a) The Australia component consists of persons born in Australia who have settled overseas and returned.

New South Wales

Table 2.1 (continued) **Settler arrivals by birthplace, 1997-98 to 2007-08**

Birthplace	1997-98	1998-99	1999-00	2000-01	2001-02	2002-03	2003-04	2004-05	2005-06	2006-07	2007-08
<i>Northern Europe</i>											
Denmark	36	28	24	40	31	32	31	29	34	26	26
Finland	17	19	13	18	19	14	16	22	23	16	22
Greenland	-	-	-	-	-	-	-	-	-	-	-
Iceland	-	1	2	-	1	-	-	-	-	2	-
Norway	14	11	15	12	10	14	20	16	24	19	16
Sweden	47	29	37	48	53	44	86	54	56	50	51
Total	114	88	91	118	114	104	153	121	137	113	115
<i>Southern Europe</i>											
Andorra	-	-	-	-	-	-	-	-	-	-	1
Gibraltar	2	2	-	-	-	1	2	3	1	3	1
Italy	79	75	51	65	73	51	56	55	51	62	50
Malta	20	15	25	18	13	6	15	24	8	22	24
Portugal	23	25	27	8	16	16	16	10	10	12	15
Spain	28	25	18	33	32	29	40	31	33	60	37
Total	152	142	121	124	134	103	129	123	103	159	128
<i>South Eastern Europe</i>											
Albania	5	10	16	10	16	17	18	11	16	9	13
Bosnia & Herzegovina (b)	669	410	192	199	117	47	40	35	39	34	26
Bulgaria	29	87	60	54	45	28	23	39	24	20	29
Croatia (b)	387	455	474	581	306	119	48	19	32	32	28
Cyprus	30	32	26	29	15	8	17	14	13	9	9
Fmr Yugo Rep of Macedonia (b)	173	170	120	185	166	173	143	121	140	122	119
Greece	84	55	39	43	38	48	42	30	42	22	19
Moldava	5	1	-	-	6	3	5	7	8	4	6
Montenegro (b)	-	-	-	-	-	-	-	-	-	-	1
Romania	71	100	89	96	75	77	76	85	60	68	74
Serbia (b)	-	-	-	-	-	-	-	-	-	13	49
Fmr Serbia & Montenegro (b)	-	845	672	669	682	525	365	233	170	157	86
Slovenia	15	7	1	8	-	3	5	1	8	7	8
Former Yugoslavia nfd (b)	596	-	-	-	-	-	-	-	-	-	-
Total	2 064	2 172	1 689	1 874	1 466	1 048	782	595	552	497	467
<i>Eastern Europe</i>											
Belarus (c)	6	5	2	9	5	8	7	27	28	15	5
Czech Republic (d)	11	3	10	5	8	7	7	10	10	19	18
Estonia (c)	-	2	2	5	16	8	6	3	4	3	2
Former Czechoslovakia (d)	14	46	46	48	68	60	61	48	48	54	49
Hungary	30	26	47	27	31	29	40	49	41	47	54
Latvia (c)	8	6	4	6	1	20	11	13	11	9	9
Lituania (c)	1	7	8	9	14	9	15	21	8	7	5
Poland	101	109	69	97	71	95	112	119	107	87	110
Russian Federation (c)	68	25	31	41	36	52	100	166	200	162	164
Slovakia (d)	11	3	8	8	6	12	16	9	10	11	12
Ukraine	66	15	27	26	31	45	78	94	77	74	79
Total	316	247	254	281	287	345	453	559	544	488	507
Total Europe	6 383	6 202	5 966	5 959	5 392	6 033	7 161	6 317	6 890	6 381	6 299

(b) As reliable data are not available for component countries prior to 1995-96, care should be taken when interpreting the data. Serbia and Montenegro was previously called the Federal Republic of Yugoslavia and since 1998-99 contains the Former Yugoslavia nfd.

(c) As reliable data are not available for component countries prior to 1995-96, care should be taken when interpreting the data.

(d) As reliable data are not available for component countries prior to 1995-96, care should be taken when interpreting the data.

New South Wales

Table 2.1 (continued) **Settler arrivals by birthplace, 1997-98 to 2007-08**

Birthplace	1997-98	1998-99	1999-00	2000-01	2001-02	2002-03	2003-04	2004-05	2005-06	2006-07	2007-08
North Africa & The Middle East											
<i>North Africa</i>											
Algeria	16	20	15	18	18	19	16	20	14	5	14
Egypt	182	204	197	222	180	227	287	369	356	324	278
Libya	6	3	10	8	5	7	14	9	6	9	9
Morocco	9	16	13	11	15	15	15	19	28	21	21
Sudan	249	265	283	357	277	771	1 318	1 424	1 017	733	262
Tunisia	8	5	2	2	5	14	4	3	2	6	7
Total	470	513	520	618	500	1 053	1 654	1 844	1 423	1 098	591
<i>The Middle East</i>											
Bahrain	9	6	8	2	10	4	7	17	11	12	16
Gaza Strip & West Bank	4	10	18	9	16	3	14	2	3	5	6
Iran	391	285	443	435	371	411	370	461	445	445	455
Iraq	1 149	915	941	1 012	739	1 449	1 113	1 176	1 550	1 316	1 319
Israel	61	51	44	50	57	115	111	167	121	99	111
Jordan	68	91	68	122	73	114	124	166	131	94	106
Kuwait	80	79	104	57	38	42	38	29	82	54	54
Lebanon	788	701	931	1 086	802	1 136	935	1 017	871	960	935
Oman	4	10	3	5	1	4	3	13	10	8	11
Qatar	10	6	4	11	5	3	8	8	10	5	6
Saudi Arabia	35	20	25	25	24	29	15	41	23	31	38
Syria	111	106	120	119	104	131	126	152	158	138	126
Turkey	279	237	224	183	226	296	275	230	224	118	135
United Arab Emirates	27	12	29	23	36	63	58	77	87	83	86
Yemen	3	5	2	10	4	15	3	3	2	5	-
Middle East nfd	-	4	7	11	14	20	15	28	15	14	22
Total	3 019	2 538	2 971	3 160	2 520	3 835	3 215	3 587	3 743	3 387	3 426
Total North Africa & the Middle East	3 489	3 051	3 491	3 778	3 020	4 888	4 869	5 431	5 166	4 485	4 017
Southeast Asia											
Brunei	8	5	-	10	2	7	12	6	4	2	1
Burma (Myanmar)	81	91	65	109	111	92	93	142	165	405	420
Cambodia	230	145	99	168	211	240	183	208	205	247	247
East Timor (e)	-	-	-	3	3	3	9	4	6	6	12
Indonesia (e)	666	953	1 209	1 651	1 623	1 300	1 138	806	851	736	733
Laos	15	25	11	35	26	22	26	28	30	46	44
Malaysia	233	348	436	574	403	503	819	652	628	573	647
Philippines	1 359	1 874	1 742	1 664	1 312	1 490	1 828	1 915	2 072	2 086	2 248
Singapore	163	157	212	350	301	307	423	559	427	279	353
Thailand	181	216	202	295	468	434	369	473	554	631	641
Vietnam	1 000	875	535	602	714	928	820	838	1 142	1 186	1 076
Total Southeast Asia	3 936	4 689	4 511	5 461	5 174	5 326	5 720	5 631	6 084	6 197	6 422

(e) East Timor previously recorded under Indonesia, care should be taken when interpreting the data.

New South Wales

Table 2.1 (continued) **Settler arrivals by birthplace, 1997-98 to 2007-08**

Birthplace	1997-98	1998-99	1999-00	2000-01	2001-02	2002-03	2003-04	2004-05	2005-06	2006-07	2007-08
Northeast Asia											
China (f)	2 617	3 902	4 407	5 945	4 214	4 221	5 010	6 273	5 296	5 450	5 612
Hong Kong (g)	1 825	1 101	838	873	495	496	525	602	495	437	346
Japan	190	236	226	248	194	221	229	257	240	213	206
Korea	379	430	521	900	491	582	664	1 020	1 156	1 074	1 289
Macau (g)	33	29	27	15	15	5	12	12	9	11	9
Mongolia	3	-	2	-	1	8	3	2	5	2	5
Taiwan	633	608	636	1 009	680	364	314	242	191	158	207
Total Northeast Asia	5 680	6 306	6 657	8 990	6 090	5 897	6 757	8 408	7 392	7 345	7 674
Southern Asia											
Bangladesh	235	345	631	750	306	302	405	492	575	522	639
Bhutan	5	1	-	2	-	1	-	-	-	1	1
India	1 367	1 329	2 352	3 137	2 388	2 759	3 639	4 156	4 615	5 250	5 188
Maldives	-	1	-	1	-	-	-	4	-	1	2
Nepal	10	25	78	154	110	127	150	191	218	295	379
Pakistan	251	388	596	786	495	444	578	762	680	740	632
Sri Lanka	549	422	546	884	713	618	506	762	618	673	799
Total Southern Asia	2 417	2 511	4 203	5 714	4 012	4 251	5 278	6 367	6 706	7 482	7 640
Central Asia											
Afghanistan	281	379	470	275	290	443	507	830	1 053	648	422
Armenia (d)	13	-	6	2	4	8	8	5	4	8	4
Azerbaijan (d)	1	1	3	1	8	3	3	4	3	4	3
Georgia (d)	4	-	5	6	5	7	1	5	2	8	3
Kazakhstan (d)	6	-	7	9	5	7	22	7	24	7	13
Kyrgyzstan (d)	-	1	6	1	2	1	5	3	6	-	5
Tajikistan (d)	-	-	-	1	2	1	-	-	3	-	-
Turkmenistan (d)	-	-	-	-	1	-	2	-	5	2	-
Uzbekistan (d)	1	3	6	2	4	6	11	11	16	15	15
Total Central Asia	306	384	503	297	321	476	559	865	1 116	692	465
Northern America											
Bermuda	5	1	-	1	1	3	-	3	1	1	-
Canada	317	236	251	280	206	226	211	235	299	240	217
USA	573	435	419	508	418	523	496	621	645	546	548
Total Northern America	895	672	670	789	625	752	707	859	945	787	765

(d) As reliable data are not available for component countries prior to 1995-96, care should be taken when interpreting the data.

(f) Excluding SARs and Taiwan.

(g) SAR of China.

New South Wales

Table 2.1 (continued) **Settler arrivals by birthplace, 1997-98 to 2007-08**

Birthplace	1997-98	1998-99	1999-00	2000-01	2001-02	2002-03	2003-04	2004-05	2005-06	2006-07	2007-08
South America, Central America & the Caribbean											
<i>South America</i>											
Argentina	34	36	21	45	21	76	167	179	110	80	62
Bolivia	4	19	12	13	12	6	16	5	8	9	10
Brazil	31	44	53	38	68	92	94	194	162	168	152
Chile	77	93	76	76	77	105	106	91	93	68	77
Colombia	40	60	64	79	97	117	94	134	131	112	113
Ecuador	6	10	14	29	19	32	43	32	38	19	21
Falkland Islands	1	-	-	-	1	-	-	-	1	-	-
French Guiana	-	1	-	1	-	-	1	-	-	-	-
Guyana	2	1	5	1	-	-	-	-	2	2	2
Paraguay	2	2	3	1	6	-	2	1	7	2	3
Peru	57	83	80	89	71	108	102	122	175	160	139
Suriname	-	1	-	-	-	5	4	1	-	-	3
Uruguay	16	18	10	17	16	30	38	46	52	18	28
Venezuela	30	26	15	26	25	37	22	69	90	62	101
South America nfd	-	-	-	-	-	-	-	-	-	1	1
Total	300	394	353	415	413	608	689	874	869	701	712
<i>Central America</i>											
Belize	-	-	-	1	-	1	-	-	-	-	-
Costa Rica	4	-	3	2	3	-	-	3	5	2	3
El Salvador	23	3	8	7	3	3	13	5	10	4	11
Guatemala	-	2	3	5	3	1	4	-	3	5	4
Honduras	1	-	-	-	1	3	3	3	1	1	-
Mexico	15	13	13	6	24	21	16	26	69	49	73
Nicaragua	1	3	1	-	3	2	-	1	3	3	3
Panama	1	1	1	1	1	1	2	3	6	2	3
Central America nfd	-	-	-	1	-	-	1	-	-	1	-
Total	45	22	29	23	38	32	39	41	97	67	97
<i>The Caribbean</i>											
Anguilla	1	-	-	-	-	-	-	-	-	-	-
Aruba	-	-	1	-	-	-	-	-	-	-	-
Bahamas	2	1	2	1	2	1	2	1	1	-	-
Barbados	1	1	-	1	1	-	1	2	1	-	4
Cayman Islands	-	1	-	1	1	-	1	1	-	1	1
Cuba	1	6	5	6	7	8	10	8	11	5	18
Dominica	-	-	-	-	-	-	1	-	-	-	-
Dominican Republic	-	1	-	-	3	-	1	-	3	3	6
Grenada	1	-	1	-	-	-	-	-	1	-	2
Guadeloupe	-	-	-	-	1	1	-	-	-	-	-
Haiti	1	-	1	-	-	-	-	-	3	-	-
Jamaica	8	4	3	10	4	3	3	7	7	6	6
Martinique	-	-	1	-	-	-	-	-	-	-	-
Montserrat	-	-	-	-	-	-	-	-	1	-	-
Netherlands Antilles	-	1	-	-	4	-	-	-	3	1	-
Puerto Rico	-	-	-	-	2	1	1	-	-	2	1

New South Wales

Table 2.1 (continued) **Settler arrivals by birthplace, 1997-98 to 2007-08**

Birthplace	1997-98	1998-99	1999-00	2000-01	2001-02	2002-03	2003-04	2004-05	2005-06	2006-07	2007-08
<i>The Caribbean (continued)</i>											
St Lucia	-	-	-	-	-	-	-	-	2	2	-
St Vincent & The Grenadines	-	-	1	-	-	-	-	-	1	-	-
Trinidad & Tobago	4	1	4	3	2	-	5	8	6	1	5
Turks & Caicos Islands	-	-	-	-	-	-	-	-	1	-	-
Virgin Islands United States	-	-	-	-	-	-	-	-	1	-	-
Caribbean nfd	-	-	-	-	-	-	-	-	-	1	-
Total	19	16	19	22	27	14	25	27	42	22	43
Total South America, Central America & The Caribbean	364	432	401	460	478	654	753	942	1 008	790	852
Sub-Saharan Africa											
<i>Central & West Africa</i>											
Benin	-	-	-	-	-	-	-	-	-	4	9
Burkina Faso	-	-	-	-	3	-	-	-	-	-	-
Cameroon	1	1	1	-	1	5	3	2	1	3	6
Cape Verde	-	-	-	-	-	-	-	-	-	-	1
Central African Republic	-	-	-	-	-	-	-	-	-	-	2
Chad	-	-	-	-	-	-	-	1	-	-	2
Congo	-	-	-	4	2	3	33	59	34	44	9
Congo Democratic Republic	1	-	3	2	3	-	4	4	27	154	144
Cote D'Ivoire	1	-	-	1	-	2	2	30	26	29	13
Gabon	-	-	-	-	-	-	-	2	-	-	1
Gambia	2	2	-	-	1	2	-	-	2	5	1
Ghana	54	112	65	56	42	72	73	88	115	121	93
Guinea	1	-	-	-	5	10	6	58	46	49	35
Guinea-Bissau	-	-	-	-	1	1	-	-	1	-	-
Liberia	4	-	-	2	25	55	37	254	190	169	49
Mali	-	-	-	-	-	-	1	-	-	-	-
Mauritania	-	1	-	-	-	-	-	-	1	3	13
Niger	7	-	3	6	1	-	-	2	3	3	1
Nigeria	29	56	30	33	49	41	35	53	69	75	59
Senegal	8	2	3	1	8	1	3	4	5	2	8
Sierra Leone	3	4	55	63	160	95	64	250	332	317	160
Togo	-	-	-	3	1	1	2	-	1	13	31
Total	111	178	160	171	302	288	263	807	853	991	637
<i>Southern & East Africa</i>											
Angola	-	3	5	-	2	1	-	2	1	6	2
Botswana	21	1	6	9	4	4	6	11	6	14	8
Burundi	-	1	-	-	1	5	22	66	78	174	64
Djibouti	-	1	3	1	1	1	1	2	-	1	1
Eritrea (h)	5	13	17	21	31	10	19	21	17	21	7
Ethiopia (h)	50	62	65	55	65	134	120	56	63	87	74
Kenya	47	48	35	66	79	153	140	158	158	159	98
Lesotho	-	-	-	1	3	1	-	1	1	2	-
Madagascar	-	1	-	-	1	2	1	-	1	1	-
Malawi	2	4	4	4	9	3	5	8	2	6	5

(h) As reliable data are not available for component countries prior to 1995-96, care should be taken when interpreting the data.

New South Wales

Table 2.1 (continued) **Settler arrivals by birthplace, 1997-98 to 2007-08**

Birthplace	1997-98	1998-99	1999-00	2000-01	2001-02	2002-03	2003-04	2004-05	2005-06	2006-07	2007-08
<i>Southern & East Africa</i> (continued)											
Mauritius	37	20	40	34	33	34	45	44	25	53	48
Mozambique	9	-	4	3	3	2	4	4	3	-	5
Namibia	8	6	11	13	21	14	3	19	5	5	3
Reunion	-	4	-	-	1	-	1	-	1	-	-
Rwanda	-	-	1	1	-	1	12	15	10	28	8
St Helena	-	-	-	-	-	1	-	-	1	-	-
Seychelles	-	2	4	-	5	2	11	-	1	3	1
Somalia	194	115	64	72	74	45	32	58	58	54	23
South Africa	1 775	1 924	2 016	2 148	1 912	1 454	1 732	1 464	995	848	1 070
Swaziland	1	5	2	1	3	2	1	-	2	1	-
Tanzania	9	2	4	7	10	7	12	49	58	124	99
Uganda	5	7	6	8	18	25	38	75	39	55	42
Zambia	19	28	30	31	43	24	36	16	16	18	25
Zimbabwe	68	99	112	167	199	205	332	342	346	251	232
Southern & East Africa nfd	-	-	-	1	-	-	1	-	-	-	-
Total	2 250	2 346	2 429	2 643	2 518	2 130	2 574	2 411	1 887	1 911	1 815
Total											
Sub-Saharan Africa	2 361	2 524	2 589	2 814	2 820	2 418	2 837	3 218	2 740	2 902	2 452
Supplementary codes (i)											
Europe & USSR nfd	-	1	-	-	-	-	-	-	-	-	-
Fmr USSR	144	288	273	275	301	275	223	267	269	162	181
Total	144	289	273	275	301	275	223	267	269	162	181
Not stated	18	21	38	24	16	4	16	2	4	5	13
Total all countries	31 694	35 141	39 311	46 745	35 301	36 431	40 561	44 746	44 661	43 835	43 520

(i) Supplementary codes cannot be classified to any major region in the Standard Australian Classification of Countries (SACC). This may lead to under reporting of their component countries in the rest of the table, care should be taken when interpreting the data.

Victoria

Table 3.1 Settler arrivals by birthplace, 1997-98 to 2007-08

Birthplace	1997-98	1998-99	1999-00	2000-01	2001-02	2002-03	2003-04	2004-05	2005-06	2006-07	2007-08
Oceania											
<i>Australia & External Territories (a)</i>											
	56	47	58	131	82	81	95	90	117	127	172
<i>New Zealand</i>	2 081	2 841	3 663	4 806	3 156	2 242	2 549	2 912	3 168	4 178	4 786
<i>Melanesia</i>											
New Caledonia	1	1	6	-	2	-	-	-	1	-	1
Papua New Guinea	4	3	6	8	8	13	12	7	7	12	10
Solomon Islands	3	1	3	2	-	2	7	1	-	3	3
Vanuatu	4	5	1	-	3	3	4	-	6	2	3
<i>Total</i>	12	10	16	10	13	18	23	8	14	17	17
<i>Micronesia</i>											
Kiribati	2	2	-	-	2	1	1	1	-	-	-
Micronesia Federated States	2	-	-	-	1	3	-	-	-	1	-
Nauru	2	1	2	3	12	5	1	4	4	1	1
Micronesia nfd	-	-	1	-	-	-	-	-	-	-	-
<i>Total</i>	6	3	3	3	15	9	2	5	4	2	1
<i>Polynesia (excluding Hawaii)</i>											
Cook Islands	68	57	68	61	25	24	28	32	27	25	44
Fiji	222	245	288	331	265	279	312	316	331	311	364
French Polynesia	-	2	-	2	-	-	-	2	-	1	-
Niue	-	9	10	7	3	1	5	2	2	5	18
Samoa	154	183	174	233	116	97	111	145	126	90	133
Samoa American	-	4	2	-	5	2	-	1	-	-	3
Tokelau	-	1	-	1	2	-	-	1	-	-	6
Tonga	42	43	58	70	38	39	44	42	46	27	18
Tuvalu	-	-	1	-	-	-	-	1	2	-	-
<i>Total</i>	486	544	601	705	454	442	500	542	534	459	586
Total Oceania	2 641	3 445	4 341	5 655	3 720	2 792	3 169	3 557	3 837	4 783	5 562
Europe											
<i>United Kingdom & Ireland</i>											
UK	1 300	1 190	1 312	1 529	1 446	2 020	2 854	2 877	3 558	3 221	3 189
Ireland	92	81	106	109	91	114	177	163	171	169	194
<i>Total</i>	1 392	1 271	1 418	1 638	1 537	2 134	3 031	3 040	3 729	3 390	3 383
<i>Western Europe</i>											
Austria	9	13	26	23	17	19	23	29	17	18	12
Belgium	10	11	16	12	13	12	15	19	15	14	16
France	49	58	35	38	47	65	69	74	54	58	55
Germany	140	162	165	174	158	190	145	193	216	210	174
Luxembourg	2	-	-	-	-	-	-	-	3	-	-
Netherlands	70	60	88	69	60	104	92	79	131	84	124
Switzerland	24	22	32	29	42	33	32	39	29	32	36
<i>Total</i>	304	326	362	345	337	423	376	433	465	416	417

(a) The Australia component consists of persons born in Australia who have settled overseas and returned.

Victoria

Table 3.1 (continued) **Settler arrivals by birthplace, 1997-98 to 2007-08**

Birthplace	1997-98	1998-99	1999-00	2000-01	2001-02	2002-03	2003-04	2004-05	2005-06	2006-07	2007-08
<i>Northern Europe</i>											
Denmark	18	13	22	17	24	19	13	18	14	15	16
Finland	2	15	4	10	9	9	12	11	15	19	16
Iceland	-	2	1	-	-	-	1	-	-	1	1
Norway	4	1	12	6	2	10	6	13	15	12	16
Sweden	19	16	22	29	32	24	34	30	41	27	40
Total	43	47	61	62	67	62	66	72	85	74	89
<i>Southern Europe</i>											
Gibraltar	1	2	1	-	-	-	1	2	1	-	-
Italy	60	58	65	47	87	39	49	38	62	60	53
Malta	13	22	9	14	10	40	25	51	16	64	47
Portugal	11	1	4	9	2	7	6	17	9	10	7
Spain	16	10	7	17	8	25	14	27	16	18	17
Total	101	93	86	87	107	111	95	135	104	152	124
<i>South Eastern Europe</i>											
Albania	55	32	29	25	36	218	74	75	78	58	50
Bosnia & Herzegovina (b)	672	459	242	304	149	72	37	34	43	39	52
Bulgaria	19	18	30	34	22	22	47	40	36	35	29
Croatia (b)	279	229	227	241	131	83	44	19	33	33	22
Cyprus	31	16	12	22	18	17	31	10	11	13	8
Fmr Yugo Rep of Macedonia (b)	201	165	123	165	154	154	184	147	164	147	158
Greece	73	53	35	34	43	37	35	27	39	38	38
Moldava	1	2	2	-	3	3	10	1	9	7	10
Montenegro (b)	-	-	-	-	-	-	-	-	-	1	8
Romania	114	132	112	113	105	120	99	107	127	104	78
Serbia (b)	-	-	-	-	-	-	-	-	-	12	55
Fmr Serbia & Montenegro (b)	-	991	833	896	693	562	307	244	143	174	114
Slovenia (b)	6	9	8	6	1	1	6	4	-	5	14
Former Yugoslavia nfd (b)	533	-	-	-	-	-	-	-	-	-	-
Total	1 984	2 106	1 653	1 840	1 355	1 289	874	708	683	666	636
<i>Eastern Europe</i>											
Belarus (c)	6	3	6	5	4	2	4	14	14	8	7
Czech Republic (d)	7	1	3	5	3	2	4	5	8	11	9
Estonia (c)	1	-	2	2	4	2	4	5	2	2	2
Former Czechoslovakia (d)	14	17	21	21	29	29	24	18	16	15	18
Hungary	15	11	13	9	20	26	21	24	31	34	26
Latvia (c)	5	3	4	6	9	-	11	8	6	4	10
Lithuania (c)	-	11	8	6	9	3	13	6	7	5	3
Poland	104	82	56	69	66	72	117	102	77	73	90
Russian Federation (c)	59	11	11	16	19	20	54	148	124	86	136
Slovakia (d)	6	1	2	-	2	1	7	3	3	4	8
Ukraine	127	13	28	27	40	24	85	64	75	76	51
Eastern Europe nfd	-	-	-	-	-	-	1	-	-	-	-
Total	344	153	154	166	205	181	345	397	363	318	360
Total Europe	4 168	3 996	3 734	4 138	3 608	4 200	4 787	4 785	5 429	5 016	5 009

(b) As reliable data are not available for component countries prior to 1995-96, care should be taken when interpreting the data. Serbia and Montenegro was previously called the Federal Republic of Yugoslavia and since 1998-99 contains the Former Yugoslavia nfd.

(c) As reliable data are not available for component countries prior to 1995-96, care should be taken when interpreting the data.

(d) As reliable data are not available for component countries prior to 1995-96, care should be taken when interpreting the data.

Victoria

Table 3.1 (continued) **Settler arrivals by birthplace, 1997-98 to 2007-08**

Birthplace	1997-98	1998-99	1999-00	2000-01	2001-02	2002-03	2003-04	2004-05	2005-06	2006-07	2007-08
North Africa & The Middle East											
<i>North Africa</i>											
Algeria	7	8	2	8	6	7	7	5	7	5	1
Egypt	87	116	100	128	121	199	307	308	288	269	230
Libya	6	2	1	7	4	8	5	6	9	4	10
Morocco	7	6	8	2	5	18	10	10	11	14	18
Sudan	71	158	106	257	326	919	1 530	2 022	1 332	854	279
Tunisia	2	2	1	4	-	3	-	1	1	3	-
North Africa nfd	-	1	-	-	-	-	-	-	-	-	-
Total	180	293	218	406	462	1 154	1 859	2 352	1 648	1 149	538
<i>The Middle East</i>											
Bahrain	4	-	4	6	1	10	6	8	9	16	5
Gaza Strip & West Bank	-	4	6	6	4	1	1	2	-	3	-
Iran	114	115	171	169	98	164	198	206	175	263	247
Iraq	477	419	527	385	396	768	549	595	624	666	619
Israel	52	42	48	38	81	88	157	150	141	140	117
Jordan	12	24	25	26	32	16	47	47	43	26	33
Kuwait	28	23	60	33	11	34	35	32	19	45	40
Lebanon	258	200	239	332	230	375	268	338	317	343	384
Oman	5	1	6	4	3	8	2	5	9	11	7
Qatar	1	1	-	5	4	2	1	2	3	10	7
Saudi Arabia	9	17	9	13	17	20	25	26	22	36	27
Syria	36	48	44	72	36	65	62	62	57	76	68
Turkey	293	243	231	201	286	338	343	312	237	156	179
United Arab Emirates	23	20	12	14	54	89	59	85	101	95	102
Yemen	2	4	15	1	3	3	14	4	4	2	7
Middle East nfd	-	1	5	2	6	3	15	26	14	7	6
Total	1 314	1 162	1 402	1 307	1 262	1 984	1 782	1 900	1 775	1 895	1 848
Total North Africa & the Middle East	1 494	1 455	1 620	1 713	1 724	3 138	3 641	4 252	3 423	3 044	2 386
Southeast Asia											
Brunei	3	9	7	16	6	17	10	20	12	4	4
Burma (Myanmar)	24	17	32	52	45	25	31	158	320	632	901
Cambodia	201	124	98	204	186	279	279	295	280	314	311
East Timor (e)	-	-	-	10	4	4	8	13	17	3	11
Indonesia (e)	329	504	635	910	1 074	709	601	534	406	376	373
Laos	5	12	3	9	6	8	13	35	6	37	11
Malaysia	299	420	574	847	773	1 008	1 439	1 082	1 062	1 111	1 215
Philippines	528	548	596	666	634	824	1 165	1 161	1 340	1 644	1 717
Singapore	150	149	211	396	406	500	729	881	829	482	512
Thailand	44	95	110	171	273	257	247	278	417	542	696
Vietnam	886	867	601	697	760	1 016	876	935	910	1 208	1 000
Total Southeast Asia	2 469	2 745	2 867	3 978	4 167	4 647	5 398	5 392	5 599	6 353	6 751

(e) East Timor previously recorded under Indonesia, care should be taken when interpreting the data.

Victoria

Table 3.1 (continued) **Settler arrivals by birthplace, 1997-98 to 2007-08**

Birthplace	1997-98	1998-99	1999-00	2000-01	2001-02	2002-03	2003-04	2004-05	2005-06	2006-07	2007-08
Northeast Asia											
China (f)	1 075	1 555	1 651	1 835	1 607	1 611	2 545	3 059	3 142	3 976	4 568
Hong Kong (g)	509	338	259	383	232	298	338	280	266	287	264
Japan	73	95	101	91	118	101	124	126	164	165	158
Korea	56	65	52	131	101	130	166	317	435	331	470
Macau (g)	11	16	5	7	10	12	8	13	4	4	4
Mongolia	-	-	-	-	-	-	-	9	3	7	1
Taiwan	256	189	275	432	248	166	138	120	198	137	133
Total Northeast Asia	1 980	2 258	2 343	2 879	2 316	2 318	3 319	3 924	4 212	4 907	5 598
Southern Asia											
Bangladesh	27	29	92	67	54	76	82	177	167	187	248
Bhutan	2	-	-	-	-	-	-	-	-	-	1
India	810	694	1 435	2 209	1 835	2 068	3 236	3 491	4 295	4 826	5 577
Maldives	1	-	1	-	4	3	1	1	-	3	5
Nepal	14	4	16	47	34	33	44	64	44	95	112
Pakistan	132	106	159	273	197	197	310	387	364	467	434
Sri Lanka	532	363	534	858	1 034	977	791	1 177	1 329	1 464	1 979
Total Southern Asia	1 518	1 196	2 237	3 454	3 158	3 354	4 464	5 297	6 199	7 042	8 356
Central Asia											
Afghanistan	157	275	181	138	190	265	364	326	738	729	625
Armenia (d)	9	6	6	1	3	2	3	-	1	3	3
Azerbaijan (d)	3	-	9	-	2	-	3	3	3	-	-
Georgia (d)	-	1	3	3	3	1	4	-	1	1	5
Kazakhstan (d)	10	3	4	4	2	4	6	10	9	15	15
Kyrgyzstan (d)	4	2	-	-	1	2	8	4	11	5	10
Tajikistan (d)	-	-	1	-	-	1	-	-	1	2	-
Turkmenistan (d)	-	-	-	-	-	3	-	-	1	3	-
Uzbekistan (d)	8	4	1	5	8	3	11	6	15	19	14
Total Central Asia	191	291	205	151	209	281	399	349	780	777	672
Northern America											
Bermuda	-	1	1	4	7	2	-	-	1	-	2
Canada	119	90	116	114	105	119	150	134	131	138	136
USA	237	218	233	261	271	292	272	359	324	340	329
Total Northern America	356	309	350	379	383	413	422	493	456	478	467

(d) As reliable data are not available for component countries prior to 1995-96, care should be taken when interpreting the data.

(f) Excluding SARs and Taiwan.

(g) SAR of China.

Victoria

Table 3.1 (continued) **Settler arrivals by birthplace, 1997-98 to 2007-08**

Birthplace	1997-98	1998-99	1999-00	2000-01	2001-02	2002-03	2003-04	2004-05	2005-06	2006-07	2007-08
South America, Central America & the Caribbean											
<i>South America</i>											
Argentina	15	15	14	17	28	38	102	69	68	18	25
Bolivia	-	-	1	1	1	1	-	2	2	-	-
Brazil	6	9	20	25	34	42	36	41	72	76	70
Chile	33	69	29	37	33	50	41	51	43	26	32
Colombia	6	8	7	20	20	43	36	49	39	45	55
Ecuador	2	1	1	2	1	2	3	4	3	3	9
Falkland Islands	-	1	-	-	-	-	-	-	-	-	-
Guyana	-	-	1	1	-	-	2	-	-	2	1
Paraguay	-	-	-	4	5	2	-	1	6	-	1
Peru	3	8	8	13	21	38	18	29	53	53	42
Suriname	-	-	-	-	-	-	-	-	1	-	-
Uruguay	2	5	1	4	7	14	8	14	9	8	4
Venezuela	14	1	2	3	6	6	8	22	28	34	48
South America nfd	-	-	-	-	2	-	-	-	-	-	-
Total	81	117	84	127	158	236	254	282	324	265	287
<i>Central America</i>											
Belize	-	-	1	-	-	-	-	-	-	-	-
Costa Rica	1	1	-	-	2	1	-	1	-	1	1
El Salvador	11	23	8	9	15	12	6	18	11	9	10
Guatemala	2	3	3	4	4	1	2	1	2	1	2
Honduras	-	1	-	-	-	-	-	1	2	1	3
Mexico	5	3	2	10	8	25	16	18	46	49	48
Nicaragua	1	2	1	-	-	-	-	-	-	-	-
Panama	-	-	-	-	-	1	-	1	1	-	1
Central America nfd	-	-	2	-	-	-	-	-	-	1	-
Total	20	33	17	23	29	40	24	40	62	62	65
<i>The Caribbean</i>											
Antigua & Barbuda	-	-	-	-	-	-	-	-	1	1	-
Bahamas	-	-	-	-	-	-	2	-	-	-	-
Barbados	1	-	-	1	-	1	-	-	2	-	3
Cayman Islands	2	-	-	-	-	-	-	-	-	-	3
Cuba	3	5	2	4	3	4	8	5	9	8	8
Dominica	-	-	-	-	-	-	1	-	-	-	1
Dominican Republic	1	3	2	-	1	1	2	-	-	-	-
Guadeloupe	-	-	-	-	1	1	-	1	-	-	-
Haiti	2	-	-	-	-	1	-	-	-	-	-
Jamaica	10	1	1	5	4	1	1	2	5	6	3
Montserrat	-	-	-	-	-	-	-	-	-	-	1
Puerto Rico	-	-	-	-	-	-	-	1	-	-	1
St Lucia	-	-	-	-	-	-	-	1	-	-	-
Trinidad & Tobago	1	-	-	1	1	1	11	9	3	2	2
Total	20	9	5	11	10	10	25	19	20	17	22
Total South America, Central America & The Caribbean	121	159	106	161	197	286	303	341	406	344	374

Victoria

Table 3.1 (continued) **Settler arrivals by birthplace, 1997-98 to 2007-08**

Birthplace	1997-98	1998-99	1999-00	2000-01	2001-02	2002-03	2003-04	2004-05	2005-06	2006-07	2007-08
Sub-Saharan Africa											
<i>Central & West Africa</i>											
Benin	-	-	-	-	-	-	-	1	-	4	8
Burkina Faso	-	-	-	-	-	1	-	-	-	-	-
Cameroon	-	-	1	-	2	2	-	1	2	2	9
Cape Verde	1	-	-	-	-	-	-	-	-	1	-
Chad	-	-	-	-	-	-	-	-	1	-	-
Congo	-	-	-	4	2	1	7	11	21	7	2
Congo Democratic Republic	2	5	-	1	1	1	2	3	41	44	31
Cote D'Ivoire	1	2	-	-	-	2	-	29	8	9	30
Gambia	-	-	-	-	-	1	-	-	1	-	1
Ghana	24	11	18	5	17	7	33	17	28	60	26
Guinea	-	-	-	3	-	2	1	21	12	12	12
Guinea-Bissau	-	-	-	-	2	-	-	-	-	-	-
Liberia	-	-	-	3	-	2	2	176	54	69	47
Mali	-	-	-	-	-	1	-	1	1	-	-
Mauritania	-	-	-	-	-	-	-	1	1	-	1
Niger	3	-	1	1	1	-	-	-	-	1	1
Nigeria	8	16	10	31	30	16	19	29	33	46	48
Senegal	-	-	2	-	1	2	1	2	3	-	-
Sierra Leone	2	-	-	-	6	1	9	15	35	44	26
Togo	-	-	-	-	-	-	-	-	1	10	24
Total	41	34	32	48	62	39	74	307	242	309	266
<i>Southern & East Africa</i>											
Angola	-	-	-	1	7	-	-	-	1	3	-
Botswana	7	3	1	4	4	7	1	5	3	10	5
Burundi	-	-	1	-	-	-	1	58	67	20	16
Comoros	-	-	-	3	-	1	-	-	-	3	-
Djibouti	1	8	2	2	2	4	1	6	1	5	1
Eritrea (h)	39	120	79	54	53	59	74	67	68	49	58
Ethiopia (h)	138	187	171	190	183	254	299	276	228	282	248
Kenya	21	43	51	52	87	126	151	241	162	161	111
Lesotho	-	-	-	1	2	1	1	4	-	-	-
Madagascar	-	5	1	-	-	5	1	-	-	1	2
Malawi	-	2	2	4	2	2	3	9	8	6	4
Mauritius	40	21	52	79	78	72	138	106	135	181	219

(h) As reliable data are not available for component countries prior to 1995-96, care should be taken when interpreting the data.

Victoria

Table 3.1 (continued) **Settler arrivals by birthplace, 1997-98 to 2007-08**

Birthplace	1997-98	1998-99	1999-00	2000-01	2001-02	2002-03	2003-04	2004-05	2005-06	2006-07	2007-08
<i>Southern & East Africa</i> (continued)											
Mozambique	-	2	-	-	4	8	1	2	1	-	4
Namibia	-	3	2	1	2	3	5	13	6	8	8
Rwanda	-	-	-	-	1	-	-	6	2	4	3
Seychelles	-	4	6	1	11	13	9	14	3	16	4
Somalia	339	241	137	184	218	116	125	85	99	109	43
South Africa	482	449	677	710	809	644	886	579	560	502	711
Swaziland	1	1	1	5	1	1	2	-	2	3	2
Tanzania	7	5	5	1	5	7	5	46	71	21	14
Uganda	2	5	5	6	5	8	7	32	28	51	21
Zambia	9	9	11	12	6	5	17	15	12	11	14
Zimbabwe	24	31	45	35	92	86	131	115	84	71	114
Southern & East Africa nfd	1	-	-	-	-	1	-	-	-	-	-
Total	1 111	1 139	1 249	1 345	1 572	1 423	1 858	1 679	1 541	1 517	1 602
Total											
Sub-Saharan Africa	1 152	1 173	1 281	1 393	1 634	1 462	1 932	1 986	1 783	1 826	1 868
Supplementary codes (i)											
Fmr USSR	139	224	229	255	253	212	191	199	170	122	152
Total	139	224	229	255	253	212	191	199	170	122	152
Not stated	4	40	6	3	5	6	3	6	3	6	18
Total all countries	16 233	17 291	19 319	24 159	21 374	23 109	28 028	30 581	32 297	34 698	37 213

(i) Supplementary codes cannot be classified to any major region in the Standard Australian Classification of Countries (SACC). This may lead to under reporting of their component countries in the rest of the table, care should be taken when interpreting the data.

Queensland

Table 4.1 Settler arrivals by birthplace, 1997-98 to 2007-08

Birthplace	1997-98	1998-99	1999-00	2000-01	2001-02	2002-03	2003-04	2004-05	2005-06	2006-07	2007-08
Oceania											
<i>Australia & External Territories (a)</i>											
	93	71	92	122	94	102	126	145	155	169	243
<i>New Zealand</i>	6 365	7 268	8 080	8 389	5 669	5 037	6 231	7 736	8 866	11 278	13 009
<i>Melanesia</i>											
New Caledonia	1	-	9	6	5	2	4	7	2	2	2
Papua New Guinea	100	92	56	102	86	161	129	138	152	182	196
Solomon Islands	14	16	23	19	24	7	18	29	7	20	15
Vanuatu	2	3	7	4	7	9	9	4	6	9	11
<i>Total</i>	117	111	95	131	122	179	160	178	167	213	224
<i>Micronesia</i>											
Guam	-	-	-	-	-	3	7	2	1	-	-
Kiribati	3	2	1	4	4	3	3	4	3	14	3
Micronesia Federated States	-	-	-	-	-	-	-	2	-	-	2
Nauru	-	2	-	-	-	2	3	3	2	5	1
Northern Mariana Islands	-	1	-	-	-	-	1	-	-	-	-
Palau	-	-	1	-	-	-	-	-	-	-	-
<i>Total</i>	3	5	2	4	4	8	14	11	6	19	6
<i>Polynesia (excluding Hawaii)</i>											
Cook Islands	53	28	31	67	37	31	35	30	34	47	103
Fiji	201	268	303	381	263	253	336	302	365	299	420
French Polynesia	4	-	5	3	1	2	1	3	1	-	3
Niue	2	18	17	21	10	9	11	15	12	10	34
Samoa	366	374	350	354	224	154	250	266	191	142	271
Samoa American	-	4	4	-	4	1	9	4	5	3	8
Tokelau	5	3	4	14	4	9	10	9	7	7	17
Tonga	20	62	79	68	44	29	44	70	51	39	40
Tuvalu	5	4	6	5	1	4	2	3	2	2	-
<i>Total</i>	656	761	799	913	588	492	698	702	668	549	896
Total Oceania	7 234	8 216	9 068	9 559	6 477	5 818	7 229	8 772	9 862	12 228	14 378
Europe											
<i>United Kingdom & Ireland</i>											
UK	1 921	1 896	2 030	2 061	1 850	2 676	4 160	4 189	5 068	5 569	5 954
Ireland	90	67	68	85	63	77	159	116	202	229	256
<i>Total</i>	2 011	1 963	2 098	2 146	1 913	2 753	4 319	4 305	5 270	5 798	6 210
<i>Western Europe</i>											
Austria	19	15	22	16	35	23	17	17	19	16	21
Belgium	2	10	7	18	20	10	11	6	21	18	21
France	34	36	30	24	48	50	64	60	52	82	62
Germany	142	154	141	170	152	153	164	183	224	259	246
Liechtenstein	-	-	-	-	-	-	-	-	-	1	-
Luxembourg	1	2	2	-	-	-	-	3	-	1	1
Netherlands	97	99	108	91	106	91	105	123	140	169	147
Switzerland	43	35	47	44	42	48	33	42	66	42	49
<i>Total</i>	338	351	357	363	403	375	394	434	522	588	547

(a) The Australia component consists of persons born in Australia who have settled overseas and returned.

Queensland

Table 4.1 (continued) **Settler arrivals by birthplace, 1997-98 to 2007-08**

Birthplace	1997-98	1998-99	1999-00	2000-01	2001-02	2002-03	2003-04	2004-05	2005-06	2006-07	2007-08
<i>Northern Europe</i>											
Denmark	24	22	18	22	29	12	36	39	23	21	22
Finland	5	9	9	18	8	-	15	15	21	8	18
Greenland	-	-	-	1	-	-	-	-	-	-	-
Iceland	1	-	-	1	1	1	3	1	-	9	4
Norway	3	8	9	5	11	19	6	14	17	17	8
Sweden	26	21	31	17	31	45	32	47	20	29	39
Total	59	60	67	64	80	77	92	116	81	84	91
<i>Southern Europe</i>											
Andorra	-	-	-	-	-	-	-	-	-	-	1
Gibraltar	-	-	1	-	1	1	-	1	1	2	6
Italy	21	18	16	24	21	22	31	38	19	27	30
Malta	3	2	5	1	3	2	8	9	3	4	1
Portugal	6	5	3	12	4	7	3	15	11	7	14
Spain	3	8	4	10	13	22	18	13	23	22	21
Total	33	33	29	47	42	54	60	76	57	62	73
<i>South Eastern Europe</i>											
Albania	5	2	8	14	7	17	16	10	11	5	6
Bosnia & Herzegovina (b)	288	134	59	75	45	15	16	21	12	15	10
Bulgaria	4	8	17	27	13	12	12	21	10	22	15
Croatia (b)	107	83	59	141	37	31	12	10	15	12	24
Cyprus	7	2	3	5	6	1	5	4	9	5	2
Fmr Yugo Rep of Macedonia (b)	11	15	13	46	11	8	11	4	9	6	7
Greece	5	10	6	4	7	6	8	6	7	6	7
Moldava	-	-	-	-	1	-	1	3	-	2	1
Romania	24	25	21	24	42	49	38	36	74	54	48
Serbia (b)	-	-	-	-	-	-	-	-	-	5	25
Fmr Serbia & Montenegro (b)	-	404	320	309	210	139	86	81	75	80	57
Slovenia (b)	12	3	1	3	-	-	-	-	10	20	25
Former Yugoslavia nfd (b)	135	-	-	-	-	-	-	-	-	-	-
Total	598	686	507	648	379	278	205	196	232	232	227
<i>Eastern Europe</i>											
Belarus (c)	-	4	2	3	-	3	2	2	3	-	1
Czech Republic (d)	4	1	4	3	5	1	2	2	11	18	4
Estonia (c)	-	1	-	1	1	1	1	3	2	5	7
Former Czechoslovakia (d)	2	15	18	24	21	14	18	21	18	16	13
Hungary	22	10	12	10	15	16	30	27	25	30	45
Latvia (c)	5	4	3	7	3	2	-	2	7	2	1
Lithuania (c)	-	-	4	1	-	2	1	2	2	3	8
Poland	31	19	33	40	32	30	35	40	72	31	54
Russian Federation (c)	21	9	6	20	18	6	24	30	38	32	74
Slovakia (d)	7	-	4	2	2	-	2	4	6	7	6
Ukraine	21	3	9	16	13	18	19	12	14	33	23
Total	113	66	95	127	110	93	134	145	198	177	236
Total Europe	3 152	3 159	3 153	3 395	2 927	3 630	5 204	5 272	6 360	6 941	7 384

(b) As reliable data are not available for component countries prior to 1995-96, care should be taken when interpreting the data. Serbia and Montenegro was previously called the Federal Republic of Yugoslavia and since 1998-99 contains the Former Yugoslavia nfd.

(c) As reliable data are not available for component countries prior to 1995-96, care should be taken when interpreting the data.

(d) As reliable data are not available for component countries prior to 1995-96, care should be taken when interpreting the data.

Queensland

Table 4.1 (continued) **Settler arrivals by birthplace, 1997-98 to 2007-08**

Birthplace	1997-98	1998-99	1999-00	2000-01	2001-02	2002-03	2003-04	2004-05	2005-06	2006-07	2007-08
North Africa & The Middle East											
<i>North Africa</i>											
Algeria	7	1	6	1	1	3	4	2	3	5	3
Egypt	9	15	34	33	19	55	57	69	50	45	56
Libya	1	-	1	1	-	1	2	-	3	2	-
Morocco	5	-	3	2	3	2	4	4	2	5	5
Sudan	38	49	60	121	140	440	606	708	590	330	130
Tunisia	1	2	-	3	1	1	-	-	3	1	1
North Africa nfd	-	-	-	-	1	-	-	-	-	-	-
Total	61	67	104	161	165	502	673	783	651	388	195
<i>The Middle East</i>											
Bahrain	2	1	-	2	2	7	-	-	3	4	4
Gaza Strip & West Bank	-	1	-	-	1	-	1	-	2	3	-
Iran	44	20	49	58	27	50	65	86	100	112	133
Iraq	27	44	44	70	74	170	45	43	64	82	108
Israel	10	12	3	10	18	25	22	28	19	46	16
Jordan	14	6	6	3	8	10	5	3	6	6	10
Kuwait	3	1	3	4	5	6	7	14	16	11	12
Lebanon	19	11	12	39	20	32	26	26	28	21	40
Oman	-	-	-	3	2	-	5	2	-	2	1
Qatar	-	-	-	-	1	1	1	-	1	-	4
Saudi Arabia	7	3	1	7	7	7	6	8	9	4	12
Syria	13	3	5	5	19	6	1	3	9	6	11
Turkey	20	15	26	9	31	30	38	29	24	24	37
United Arab Emirates	4	5	1	6	9	21	15	29	14	17	18
Yemen	1	-	1	-	2	4	18	1	-	6	3
Middle East nfd	-	-	-	1	2	3	1	3	1	1	-
Total	164	122	151	217	228	372	256	275	296	345	409
Total North Africa & the Middle East	225	189	255	378	393	874	929	1 058	947	733	604
Southeast Asia											
Brunei	2	3	7	6	1	1	6	2	3	3	7
Burma (Myanmar)	13	5	6	10	10	7	9	24	17	190	190
Cambodia	27	17	13	51	30	22	34	34	49	53	48
East Timor (e)	-	-	-	1	2	1	2	-	2	-	2
Indonesia (e)	134	133	137	193	235	199	216	143	176	157	180
Laos	3	-	1	19	4	2	4	36	15	17	8
Malaysia	119	136	188	207	208	226	375	303	313	278	500
Philippines	468	469	488	436	492	493	627	625	758	923	1 070
Singapore	83	76	69	148	147	249	283	370	293	159	211
Thailand	52	75	86	93	189	168	171	247	269	330	380
Vietnam	172	148	140	127	164	267	198	153	229	269	228
Total Southeast Asia	1 073	1 062	1 135	1 291	1 482	1 635	1 925	1 937	2 124	2 379	2 824

(e) East Timor previously recorded under Indonesia, care should be taken when interpreting the data.

Queensland

Table 4.1 (continued) **Settler arrivals by birthplace, 1997-98 to 2007-08**

Birthplace	1997-98	1998-99	1999-00	2000-01	2001-02	2002-03	2003-04	2004-05	2005-06	2006-07	2007-08
Northeast Asia											
China (f)	306	299	339	513	409	402	576	717	640	786	846
Hong Kong (g)	667	356	241	165	123	136	143	235	139	129	125
Japan	179	165	150	164	175	170	226	222	225	252	252
Korea	116	89	104	195	85	104	137	240	252	309	425
Macau (g)	11	6	9	3	1	1	2	4	2	1	-
Mongolia	-	-	-	-	-	-	1	4	1	4	3
Taiwan	571	711	721	1 065	695	517	378	350	292	303	314
Total Northeast Asia	1 850	1 626	1 564	2 105	1 488	1 330	1 463	1 772	1 551	1 784	1 965
Southern Asia											
Bangladesh	12	12	29	81	43	22	48	23	26	42	58
Bhutan	-	-	-	-	-	-	-	-	1	-	-
India	173	172	273	409	365	324	449	622	713	903	1 228
Maldives	-	-	-	-	1	-	-	-	4	-	1
Nepal	3	3	7	16	9	3	23	26	16	29	50
Pakistan	25	21	39	75	46	39	53	58	51	65	101
Sri Lanka	73	55	81	96	103	103	96	125	151	219	333
Total Southern Asia	286	263	429	677	567	491	669	854	962	1 258	1 771
Central Asia											
Afghanistan	21	15	27	11	48	50	52	123	157	105	98
Armenia (d)	-	-	-	-	-	-	-	-	1	-	-
Azerbaijan (d)	-	1	-	1	-	-	-	1	-	3	-
Georgia (d)	-	-	1	-	1	-	-	1	-	-	1
Kazakhstan (d)	5	-	-	3	-	3	4	3	9	6	17
Kyrgyzstan (d)	2	-	-	-	4	6	1	5	1	5	6
Tajikistan (d)	-	-	-	-	-	-	-	1	-	1	1
Turkmenistan (d)	-	-	-	-	-	-	-	2	-	-	1
Uzbekistan (d)	-	-	1	-	-	1	5	10	9	2	2
Total Central Asia	28	16	29	15	53	60	62	146	177	122	126
Northern America											
Bermuda	4	1	-	2	-	3	1	-	2	-	-
Canada	144	118	161	166	142	154	117	159	189	181	180
USA	206	199	189	236	240	251	304	302	348	402	321
Total Northern America	354	318	350	404	382	408	422	461	539	583	501

(d) As reliable data are not available for component countries prior to 1995-96, care should be taken when interpreting the data.

(f) Excluding SARs and Taiwan.

(g) SAR of China.

Queensland

Table 4.1 (continued) **Settler arrivals by birthplace, 1997-98 to 2007-08**

Birthplace	1997-98	1998-99	1999-00	2000-01	2001-02	2002-03	2003-04	2004-05	2005-06	2006-07	2007-08
South America, Central America & the Caribbean											
<i>South America</i>											
Argentina	4	9	10	7	17	29	27	30	24	13	13
Bolivia	-	1	2	4	1	4	2	-	2	-	4
Brazil	6	25	10	21	16	43	31	48	59	78	92
Chile	3	11	9	10	14	12	15	20	12	20	34
Colombia	7	17	10	13	18	27	38	29	25	39	61
Ecuador	1	-	1	-	1	1	1	4	4	3	3
Falkland Islands	1	-	-	-	-	-	-	1	1	1	1
Guyana	-	-	1	-	-	1	4	-	2	-	1
Paraguay	-	2	-	-	-	2	-	-	3	-	1
Peru	5	1	5	14	13	10	12	18	31	26	24
Suriname	-	-	-	-	-	1	-	-	-	2	-
Uruguay	1	-	1	-	4	8	5	3	2	1	3
Venezuela	9	2	7	8	4	4	19	19	22	12	30
Total	37	68	56	77	88	142	154	172	187	195	267
<i>Central America</i>											
Belize	-	-	-	-	-	-	1	-	-	-	-
Costa Rica	3	-	-	-	-	-	-	-	2	1	3
El Salvador	8	5	5	5	5	3	1	7	3	3	3
Guatemala	-	1	-	1	2	-	1	1	-	2	-
Honduras	-	-	-	-	3	-	-	-	-	1	1
Mexico	7	11	6	9	5	10	7	19	10	17	27
Nicaragua	-	-	-	-	-	-	-	-	2	3	3
Panama	-	3	-	2	1	-	1	1	1	-	2
Central America nfd	1	-	-	-	-	-	-	-	-	-	-
Total	19	20	11	17	16	13	11	28	18	27	39
<i>The Caribbean</i>											
Antigua & Barbuda	-	-	-	-	-	-	-	-	1	1	-
Aruba	1	-	-	-	-	-	-	-	-	-	-
Bahamas	-	1	-	1	-	1	2	1	-	1	1
Barbados	3	2	1	6	-	1	2	-	3	2	1
Cayman Islands	-	1	-	-	1	-	1	1	1	2	2
Cuba	-	1	-	2	3	-	-	4	2	6	6
Dominica	-	-	-	-	-	-	-	2	-	-	1
Dominican Republic	-	-	-	3	1	2	1	4	1	-	1
Grenada	-	-	-	-	-	1	1	1	1	-	-
Haiti	-	-	-	-	-	-	1	-	-	-	-
Jamaica	3	3	3	2	1	2	5	7	3	3	4
Martinique	-	-	1	-	-	-	-	-	-	-	-
Montserrat	-	-	-	-	-	-	-	-	-	-	1
Netherlands Antilles	-	-	-	-	1	-	-	-	-	-	-
Puerto Rico	-	2	-	1	-	1	-	-	1	1	1
St Lucia	-	-	-	-	-	-	-	1	-	1	1
Trinidad & Tobago	7	1	4	3	3	1	6	3	2	5	3
Virgin Islands British	-	-	-	-	-	-	-	1	-	-	-
Caribbean nfd	-	-	-	-	-	-	-	1	-	1	-
Total	14	11	9	18	10	9	19	26	15	23	22
Total South America, Central America & The Caribbean	70	99	76	112	114	164	184	226	220	245	328

Queensland

Table 4.1 (continued) **Settler arrivals by birthplace, 1997-98 to 2007-08**

Birthplace	1997-98	1998-99	1999-00	2000-01	2001-02	2002-03	2003-04	2004-05	2005-06	2006-07	2007-08
Sub-Saharan Africa											
<i>Central & West Africa</i>											
Benin	1	-	-	-	-	-	-	1	1	3	2
Burkina Faso	-	-	-	-	-	-	-	-	-	-	2
Cameroon	-	-	-	-	-	1	-	-	2	-	7
Central African Republic	-	-	-	-	-	-	-	-	-	-	5
Chad	-	-	-	-	-	-	-	-	1	4	2
Congo	-	2	-	-	-	11	1	29	8	16	11
Congo Democratic Republic	-	-	-	1	4	1	-	3	17	84	80
Cote D'Ivoire	-	-	-	-	-	1	-	11	3	14	11
Gabon	-	-	-	1	1	-	-	-	-	-	-
Gambia	-	-	-	-	-	-	-	2	1	1	1
Ghana	2	2	5	13	6	3	8	2	15	7	25
Guinea	-	1	1	-	-	6	1	24	18	19	7
Liberia	-	1	-	-	6	12	21	110	76	44	33
Niger	-	-	-	-	-	-	-	-	4	1	-
Nigeria	5	4	11	16	13	9	19	6	23	24	35
Senegal	-	-	1	-	-	-	-	-	1	-	2
Sierra Leone	-	1	6	4	33	10	13	107	44	27	13
Togo	-	-	-	-	-	-	-	7	1	10	17
Total	8	11	24	35	63	54	63	302	215	254	253
<i>Southern & East Africa</i>											
Angola	1	-	-	1	1	2	1	1	-	2	-
Botswana	9	-	2	3	2	6	4	5	9	5	2
Burundi	-	-	-	3	-	-	15	55	101	122	59
Djibouti	-	-	-	2	1	1	-	-	-	-	1
Eritrea (h)	5	8	11	7	18	7	7	7	41	26	14
Ethiopia (h)	20	30	23	35	45	36	53	60	54	42	38
Kenya	23	14	13	25	51	66	78	114	82	94	46
Lesotho	-	-	-	-	1	1	-	-	1	1	-
Madagascar	-	1	2	2	2	-	1	-	1	1	2
Malawi	-	2	-	2	16	12	12	7	-	5	8
Mauritius	1	5	2	3	4	6	7	20	26	10	22

(h) As reliable data are not available for component countries prior to 1995-96, care should be taken when interpreting the data.

Queensland

Table 4.1 (continued) **Settler arrivals by birthplace, 1997-98 to 2007-08**

Birthplace	1997-98	1998-99	1999-00	2000-01	2001-02	2002-03	2003-04	2004-05	2005-06	2006-07	2007-08
<i>Southern & East Africa</i> (continued)											
Mozambique	-	7	1	5	6	4	8	6	3	8	6
Namibia	1	6	1	6	6	11	5	8	9	8	9
Reunion	-	-	5	-	-	-	1	-	-	-	-
Rwanda	-	1	-	-	2	-	22	5	24	28	16
St Helena	-	-	-	-	-	-	-	1	-	-	-
Seychelles	-	1	-	-	6	2	2	4	-	3	1
Somalia	48	52	3	14	7	12	11	18	53	22	27
South Africa	581	806	901	1 097	1 212	1 064	1 304	1 048	995	1 185	1 570
Swaziland	2	2	-	1	1	1	1	2	3	2	1
Tanzania	5	2	1	2	3	5	14	29	85	93	75
Uganda	4	-	3	3	7	10	21	23	43	58	16
Zambia	14	11	15	22	27	19	27	30	22	21	29
Zimbabwe	57	54	126	223	367	346	416	308	214	243	281
Southern & East Africa nfd	-	-	1	-	-	-	-	-	-	-	-
Total	771	1 002	1 110	1 456	1 785	1 611	2 010	1 751	1 766	1 979	2 223
Total											
Sub-Saharan Africa	779	1 013	1 134	1 491	1 848	1 665	2 073	2 053	1 981	2 233	2 476
Supplementary codes (i)											
Fmr USSR	42	63	80	102	94	100	109	108	118	119	97
Total	42	63	80	102	94	100	109	108	118	119	97
Not stated	2	4	13	6	-	7	15	1	21	15	42
Total all countries	15 095	16 028	17 286	19 535	15 825	16 182	20 284	22 660	24 862	28 640	32 496

(i) Supplementary codes cannot be classified to any major region in the Standard Australian Classification of Countries (SACC). This may lead to under reporting of their component countries in the rest of the table, care should be taken when interpreting the data.

South Australia

Table 5.1 Settler arrivals by birthplace, 1997-98 to 2007-08

Birthplace	1997-98	1998-99	1999-00	2000-01	2001-02	2002-03	2003-04	2004-05	2005-06	2006-07	2007-08
Oceania											
<i>Australia & External Territories (a)</i>	6	6	9	11	11	12	6	15	16	30	47
<i>New Zealand</i>	296	327	341	482	339	232	266	327	373	397	508
<i>Melanesia</i>											
Papua New Guinea	2	4	-	1	1	1	6	1	3	-	2
Solomon Islands	3	-	3	-	-	-	-	1	-	3	-
Vanuatu	-	-	-	-	-	4	-	-	-	1	-
<i>Total</i>	5	4	3	1	1	5	6	2	3	4	2
<i>Micronesia</i>											
Kiribati	-	-	-	-	-	-	-	-	-	-	1
Palau	1	-	-	-	-	-	-	-	-	-	-
<i>Total</i>	1	-	-	-	-	-	-	-	-	-	1
<i>Polynesia (excluding Hawaii)</i>											
Cook Islands	5	3	2	1	-	2	-	-	1	1	5
Fiji	11	16	20	16	29	22	26	28	28	32	46
Niue	-	2	1	-	-	-	-	-	-	1	3
Samoa	7	2	3	4	4	2	2	8	3	6	4
Samoa American	-	-	-	1	1	-	-	-	-	-	1
Tokelau	-	-	-	-	-	-	-	-	-	-	1
Tonga	1	1	4	2	5	1	-	2	3	3	7
Polynesia (excl Hawaii) nfd	-	1	-	-	-	-	-	-	-	-	-
<i>Total</i>	24	25	30	24	39	27	28	38	35	43	67
Total Oceania	332	362	383	518	390	276	306	382	427	474	625
Europe											
<i>United Kingdom & Ireland</i>											
UK	671	681	665	495	572	785	1 269	1 725	3 009	2 535	2 451
Ireland	33	26	19	12	16	18	36	44	64	70	56
<i>Total</i>	704	707	684	507	588	803	1 305	1 769	3 073	2 605	2 507
<i>Western Europe</i>											
Austria	5	-	7	4	4	7	2	7	8	7	2
Belgium	1	1	4	5	1	8	2	4	4	10	11
France	13	5	11	16	16	24	17	23	18	11	13
Germany	41	52	50	35	48	28	48	58	76	74	76
Luxembourg	-	-	-	1	-	-	-	-	-	-	-
Monaco	-	-	-	-	1	-	-	-	-	-	-
Netherlands	16	18	36	20	19	22	21	34	34	46	58
Switzerland	14	6	13	5	10	10	7	11	14	4	11
<i>Total</i>	90	82	121	86	99	99	97	137	154	152	171

(a) The Australia component consists of persons born in Australia who have settled overseas and returned.

South Australia

Table 5.1 (continued) **Settler arrivals by birthplace, 1997-98 to 2007-08**

Birthplace	1997-98	1998-99	1999-00	2000-01	2001-02	2002-03	2003-04	2004-05	2005-06	2006-07	2007-08
<i>Northern Europe</i>											
Denmark	5	2	2	11	11	4	-	9	5	11	3
Finland	4	-	1	-	1	3	2	-	3	4	1
Iceland	-	-	-	-	-	-	-	-	-	-	1
Norway	4	-	1	2	1	2	7	7	4	6	3
Sweden	6	4	5	7	5	10	10	6	16	8	19
Total	19	6	9	20	18	19	19	22	28	29	27
<i>Southern Europe</i>											
Gibraltar	-	1	-	-	-	-	-	-	-	-	2
Italy	15	13	10	9	10	3	8	26	11	12	8
Malta	-	-	1	1	2	1	2	-	5	1	1
Portugal	-	4	-	1	1	1	2	2	-	3	8
Spain	7	1	4	4	5	6	4	2	3	11	6
Total	22	19	15	15	18	11	16	30	19	27	25
<i>South Eastern Europe</i>											
Albania	1	10	4	5	14	20	9	12	7	12	19
Bosnia & Herzegovina (b)	187	160	65	81	38	14	16	5	7	7	4
Bulgaria	1	9	6	12	5	7	13	4	5	9	8
Croatia (b)	65	102	85	117	58	16	5	8	2	4	2
Cyprus	5	3	-	4	2	1	4	6	1	3	4
Fmr Yugo Rep of Macedonia (b)	4	12	4	6	5	3	-	-	2	5	1
Greece	16	3	8	1	10	6	4	7	10	3	8
Moldava	-	-	-	-	-	-	15	1	5	2	12
Montenegro (b)	-	-	-	-	-	-	-	-	-	1	2
Romania	16	48	22	20	25	19	27	20	14	39	18
Serbia (b)	-	-	-	-	-	-	-	-	-	2	11
Fmr Serbia & Montenegro (b)	-	246	189	163	198	161	62	34	40	47	25
Slovenia (b)	5	-	1	-	2	-	-	-	-	1	-
Former Yugoslavia nfd (b)	105	-	-	-	-	-	-	-	-	-	-
Total	405	593	384	409	357	247	155	97	93	135	114
<i>Eastern Europe</i>											
Belarus (c)	1	-	1	-	-	-	-	2	2	6	1
Czech Republic (d)	2	-	3	-	2	-	-	-	5	3	-
Estonia	-	-	2	-	-	5	2	-	1	2	-
Former Czechoslovakia (d)	-	7	5	4	6	9	13	9	7	3	3
Hungary	6	3	6	5	5	2	7	10	4	12	3
Latvia (c)	1	-	5	2	4	2	4	2	3	5	1
Lithuania (c)	-	-	1	-	2	2	-	6	1	3	6
Poland	27	28	24	8	31	33	27	45	32	42	34
Russian Federation (c)	12	5	5	1	6	4	24	24	40	32	47
Slovakia (d)	3	2	-	-	2	1	2	1	1	2	1
Ukraine	37	8	9	8	9	9	17	14	18	13	18
Total	89	53	61	28	67	67	96	113	114	123	114
Total Europe	1 329	1 460	1 274	1 065	1 147	1 246	1 688	2 168	3 481	3 071	2 958

(b) As reliable data are not available for component countries prior to 1995-96, care should be taken when interpreting the data. Serbia and Montenegro was previously called the Federal Republic of Yugoslavia and since 1998-99 contains the Former Yugoslavia nfd.

(c) As reliable data are not available for component countries prior to 1995-96, care should be taken when interpreting the data.

(d) As reliable data are not available for component countries prior to 1995-96, care should be taken when interpreting the data.

South Australia

Table 5.1 (continued) **Settler arrivals by birthplace, 1997-98 to 2007-08**

Birthplace	1997-98	1998-99	1999-00	2000-01	2001-02	2002-03	2003-04	2004-05	2005-06	2006-07	2007-08
North Africa & The Middle East											
<i>North Africa</i>											
Algeria	-	-	-	11	2	5	-	1	-	1	1
Egypt	11	8	8	6	7	29	19	24	37	39	22
Libya	-	-	-	-	-	-	3	-	-	1	-
Morocco	2	2	-	-	-	2	3	3	1	5	2
Sudan	27	20	52	74	89	188	363	407	248	143	79
Tunisia	-	-	1	-	-	2	-	-	-	-	1
Total	40	30	61	91	98	226	388	435	286	189	105
<i>The Middle East</i>											
Bahrain	-	-	-	-	-	1	-	2	2	-	-
Gaza Strip & West Bank	-	-	-	-	1	-	-	-	-	-	-
Iran	65	47	54	119	53	71	70	69	70	143	119
Iraq	35	79	47	44	51	115	63	46	64	54	46
Israel	3	5	1	-	3	7	3	13	7	5	5
Jordan	6	1	1	9	1	5	4	9	8	4	1
Kuwait	2	1	-	2	-	3	-	2	2	6	10
Lebanon	25	10	21	22	20	29	31	24	41	38	31
Oman	-	-	-	-	1	1	-	-	4	-	-
Qatar	-	-	1	-	-	-	-	-	-	4	1
Saudi Arabia	5	-	4	1	1	1	-	2	4	5	5
Syria	7	3	6	6	11	10	8	6	7	9	9
Turkey	15	7	16	4	19	12	16	20	14	9	10
United Arab Emirates	1	-	1	-	9	7	3	11	8	12	9
Yemen	-	1	-	4	-	3	2	-	-	2	-
Middle East nfd	-	-	-	-	-	1	-	-	2	-	8
Total	164	154	152	211	170	266	200	204	233	291	254
Total North Africa & the Middle East	204	184	213	302	268	492	588	639	519	480	359
Southeast Asia											
Brunei	1	1	-	1	1	1	4	-	3	1	2
Burma (Myanmar)	-	1	1	1	1	12	3	5	11	75	119
Cambodia	32	29	27	25	28	49	31	61	52	63	59
East Timor	-	-	-	-	-	-	-	-	-	2	-
Indonesia	27	35	36	37	65	53	47	29	64	59	56
Laos	-	2	-	-	1	-	-	4	6	6	2
Malaysia	45	62	60	80	58	91	132	112	154	183	191
Philippines	131	147	121	123	126	134	147	161	285	343	372
Singapore	18	12	34	26	61	68	63	94	129	116	88
Thailand	15	29	20	35	49	50	57	50	62	93	83
Vietnam	91	101	89	71	102	130	110	97	155	193	145
Total Southeast Asia	360	419	388	399	492	588	594	613	921	1 134	1 117

South Australia

Table 5.1 (continued) **Settler arrivals by birthplace, 1997-98 to 2007-08**

Birthplace	1997-98	1998-99	1999-00	2000-01	2001-02	2002-03	2003-04	2004-05	2005-06	2006-07	2007-08
Northeast Asia											
China (f)	109	107	96	123	134	113	208	513	879	1 078	1 060
Hong Kong (g)	55	32	17	28	10	18	31	48	44	50	42
Japan	8	13	15	31	11	29	32	40	40	64	50
Korea	18	18	25	40	25	34	35	103	163	264	229
Macau (g)	-	-	1	-	-	2	1	-	2	-	1
Mongolia	-	-	-	-	-	-	-	-	-	2	-
Taiwan	15	12	23	22	18	16	18	31	30	46	37
Total Northeast Asia	205	182	177	244	198	212	325	735	1 158	1 504	1 419
Southern Asia											
Bangladesh	2	6	-	18	3	1	10	17	16	77	90
Bhutan	-	-	-	-	-	-	-	-	-	-	8
India	154	87	152	126	118	138	243	404	909	1 416	1 657
Maldives	-	-	-	-	3	-	-	1	-	1	6
Nepal	2	1	1	2	5	4	5	5	10	10	37
Pakistan	6	62	29	36	22	12	53	46	55	69	78
Sri Lanka	13	16	17	44	35	23	28	45	85	72	153
Total Southern Asia	177	172	199	226	186	178	339	518	1 075	1 645	2 029
Central Asia											
Afghanistan	13	24	2	3	36	57	98	100	373	455	322
Armenia (d)	5	-	-	-	-	5	4	-	-	-	1
Azerbaijan (d)	-	-	-	-	-	-	3	-	-	-	-
Georgia (d)	2	-	1	1	-	-	-	-	-	1	-
Kazakhstan (d)	5	6	3	1	4	1	2	11	-	7	4
Kyrgyzstan (d)	2	-	-	-	-	-	3	-	4	3	-
Tajikistan (d)	-	-	-	-	-	-	-	-	1	-	-
Turkmenistan (d)	-	-	-	-	-	-	-	-	-	-	1
Uzbekistan (d)	6	-	-	8	3	-	3	6	41	8	15
Total Central Asia	33	30	6	13	43	63	113	117	419	474	343
Northern America											
Bermuda	-	-	-	-	-	-	-	1	-	-	-
Canada	40	42	30	42	22	46	38	24	18	46	44
USA	57	40	52	57	50	78	97	68	95	89	85
Total Northern America	97	82	82	99	72	124	135	93	113	135	129

(d) As reliable data are not available for component countries prior to 1995-96, care should be taken when interpreting the data.

(f) Excluding SARs and Taiwan.

(g) SAR of China.

South Australia

Table 5.1 (continued) **Settler arrivals by birthplace, 1997-98 to 2007-08**

Birthplace	1997-98	1998-99	1999-00	2000-01	2001-02	2002-03	2003-04	2004-05	2005-06	2006-07	2007-08
South America, Central America & the Caribbean											
<i>South America</i>											
Argentina	3	3	2	4	8	8	14	33	15	8	8
Bolivia	2	-	-	1	-	-	-	1	2	-	4
Brazil	6	2	-	3	4	9	9	12	27	37	57
Chile	1	6	3	1	12	2	3	7	6	7	2
Colombia	3	1	1	4	1	4	7	1	11	14	23
Ecuador	-	-	2	-	2	2	-	4	1	-	4
Guyana	-	-	-	1	-	1	1	-	1	1	1
Paraguay	-	-	-	-	-	-	1	-	-	-	-
Peru	2	1	2	2	2	5	8	9	20	35	18
Suriname	-	-	-	-	-	1	-	-	1	-	-
Uruguay	-	-	-	-	-	1	-	1	-	1	1
Venezuela	-	5	1	2	-	1	2	9	13	34	56
Total	17	18	11	18	29	34	45	77	97	137	174
<i>Central America</i>											
Belize	2	-	-	-	-	-	-	-	-	-	-
Costa Rica	-	-	-	-	-	-	-	-	3	-	-
El Salvador	16	5	1	1	1	-	1	-	2	1	5
Guatemala	-	-	-	-	-	-	-	-	-	5	-
Honduras	-	2	-	-	-	-	-	-	1	-	-
Mexico	-	1	2	1	-	2	3	3	19	22	79
Nicaragua	-	-	-	-	-	-	-	-	-	-	1
Panama	-	-	4	-	-	-	-	-	1	-	-
Total	18	8	7	2	1	2	4	3	26	28	85
<i>The Caribbean</i>											
Bahamas	-	-	-	-	-	-	-	1	-	-	-
Barbados	-	-	-	-	-	-	-	-	-	1	-
Cayman Islands	-	-	-	1	-	-	-	-	-	-	-
Cuba	-	-	-	-	1	3	1	-	-	2	-
Dominican Republic	1	1	-	1	-	-	-	-	-	-	-
Jamaica	-	1	2	2	-	1	-	1	1	2	2
Montserrat	-	-	-	-	-	-	-	-	1	-	-
Netherlands Antilles	-	-	-	-	-	1	-	-	-	-	-
St Kitts & Nevis	-	-	-	-	-	1	-	-	-	-	-
St Lucia	1	1	-	-	-	-	-	-	1	-	-
Trinidad & Tobago	-	-	-	1	-	-	-	-	3	1	1
Total	2	3	2	5	1	6	1	2	6	6	3
Total South America, Central America & The Caribbean	37	29	20	25	31	42	50	82	129	171	262

South Australia

Table 5.1 (continued) **Settler arrivals by birthplace, 1997-98 to 2007-08**

Birthplace	1997-98	1998-99	1999-00	2000-01	2001-02	2002-03	2003-04	2004-05	2005-06	2006-07	2007-08
Sub-Saharan Africa											
<i>Central & West Africa</i>											
Cameroon	-	-	-	-	-	-	1	1	-	2	2
Central African Republic	-	-	-	-	-	-	-	1	-	-	-
Congo	-	-	-	1	1	1	11	86	6	12	1
Congo Democratic Republic	-	-	-	-	-	-	1	-	15	124	61
Cote D'Ivoire	-	-	1	1	-	-	-	13	11	18	6
Gambia	-	2	-	-	-	-	-	-	-	-	-
Ghana	-	4	-	1	2	1	1	19	18	16	3
Guinea	-	-	-	-	-	2	1	20	9	22	16
Liberia	-	-	-	1	13	45	20	144	75	102	18
Mali	-	-	1	-	-	-	-	-	-	-	-
Niger	-	1	1	-	-	-	1	-	-	-	-
Nigeria	-	1	1	1	11	3	5	5	15	10	5
Senegal	-	-	-	-	-	1	-	-	1	3	-
Sierra Leone	-	-	-	9	22	-	3	74	19	26	14
Togo	-	-	-	-	-	-	-	-	-	6	10
Total	-	8	4	14	49	53	44	363	169	341	136
<i>Southern & East Africa</i>											
Angola	-	-	-	-	-	-	-	-	-	-	1
Botswana	11	-	1	-	2	2	2	-	1	2	2
Burundi	-	-	-	-	-	-	8	46	82	21	30
Eritrea (h)	8	15	10	16	3	10	9	6	4	9	13
Ethiopia (h)	22	20	23	23	31	22	58	57	24	30	23
Kenya	1	22	24	9	31	21	57	89	79	57	23
Madagascar	-	-	-	1	-	-	-	-	1	-	-
Malawi	-	1	-	-	1	-	-	6	-	7	6
Mauritius	-	-	5	-	3	6	6	6	6	4	2
Mozambique	1	-	-	1	-	1	-	-	-	-	-
Namibia	-	2	-	1	-	7	-	5	5	1	-
Rwanda	-	-	-	-	-	-	1	7	3	8	4
Seychelles	-	2	-	-	-	-	-	-	1	-	-
Somalia	12	29	7	6	18	1	19	54	17	15	12
South Africa	184	213	189	153	241	209	317	253	263	290	245
Swaziland	-	-	1	-	-	-	2	-	-	-	-
Tanzania	2	3	1	-	-	-	5	25	64	17	22
Uganda	1	-	-	-	9	12	7	12	14	34	28
Zambia	6	4	2	2	1	2	8	5	10	21	5
Zimbabwe	10	9	22	8	29	24	39	37	53	55	38
Southern & East Africa nfd	-	-	-	-	-	-	-	-	-	-	1
Total	258	320	285	220	369	317	538	608	627	571	455
Total											
Sub-Saharan Africa	258	328	289	234	418	370	582	971	796	912	591
Supplementary codes (i)											
Fmr USSR	37	72	73	58	71	65	53	44	61	58	45
Total	37	72	73	58	71	65	53	44	61	58	45
Not stated	-	-	1	-	-	1	-	2	-	3	19
Total all countries	3 069	3 320	3 105	3 183	3 316	3 657	4 773	6 364	9 099	10 061	9 896

(h) As reliable data are not available for component countries prior to 1995-96, care should be taken when interpreting the data.

(i) Supplementary codes cannot be classified to any major region in the Standard Australian Classification of Countries (SACC). This may lead to under reporting of their component countries in the rest of the table, care should be taken when interpreting the data.

Western Australia

Table 6.1 Settler arrivals by birthplace, 1997-98 to 2007-08

Birthplace	1997-98	1998-99	1999-00	2000-01	2001-02	2002-03	2003-04	2004-05	2005-06	2006-07	2007-08
Oceania											
<i>Australia & External Territories (a)</i>	35	36	38	43	37	38	54	72	57	71	110
<i>New Zealand</i>	1 572	1 945	1 775	1 669	1 127	833	1 046	1 588	1 873	2 516	3 710
<i>Melanesia</i>											
New Caledonia	1	-	-	-	-	1	-	-	-	-	1
Papua New Guinea	5	2	-	-	1	2	1	1	3	5	5
Solomon Islands	1	1	-	2	-	-	-	1	2	1	2
Vanuatu	-	-	1	-	-	1	-	1	-	-	3
Total	7	3	1	2	1	4	1	3	5	6	11
<i>Micronesia</i>											
Guam	-	-	1	-	-	-	-	-	-	-	-
Kiribati	1	-	-	-	2	1	-	-	-	1	-
Nauru	-	-	-	3	-	-	-	1	-	-	-
Total	1	-	1	3	2	1	-	1	-	1	-
<i>Polynesia (excluding Hawaii)</i>											
Cook Islands	3	3	1	-	1	-	3	-	1	3	33
Fiji	18	3	3	11	10	6	6	11	17	11	45
French Polynesia	-	1	1	-	-	1	-	-	2	-	-
Niue	1	4	1	1	-	-	2	-	2	1	6
Samoa	2	14	9	13	1	4	8	12	4	7	51
Samoa American	-	-	1	-	-	-	-	-	1	-	2
Tokelau	-	1	1	-	-	-	-	-	1	-	1
Tonga	-	1	4	2	1	5	3	2	3	3	10
Tuvalu	-	-	-	-	2	-	-	-	-	-	-
Total	24	27	21	27	15	16	22	25	31	25	148
Total Oceania	1 639	2 011	1 836	1 744	1 182	892	1 123	1 689	1 966	2 619	3 979
Europe											
<i>United Kingdom & Ireland</i>											
UK	2 343	2 218	2 262	2 147	2 112	3 319	5 120	5 106	6 717	7 286	7 125
Ireland	122	120	130	138	92	106	174	159	218	297	325
Total	2 465	2 338	2 392	2 285	2 204	3 425	5 294	5 265	6 935	7 583	7 450
<i>Western Europe</i>											
Austria	7	19	26	9	11	11	17	17	10	22	13
Belgium	11	7	9	7	6	25	8	21	10	12	16
France	24	23	14	18	29	34	34	40	45	38	39
Germany	92	87	117	110	62	101	114	120	127	122	176
Liechtenstein	-	-	-	-	2	-	-	-	-	-	-
Luxembourg	-	1	-	-	-	-	-	-	1	3	1
Monaco	-	-	-	-	-	-	-	-	1	-	-
Netherlands	57	68	57	63	80	39	73	93	73	108	113
Switzerland	28	38	40	32	31	47	34	39	47	33	58
Total	219	243	263	239	221	257	280	330	314	338	416

(a) The Australia component consists of persons born in Australia who have settled overseas and returned.

Western Australia

Table 6.1 (continued) **Settler arrivals by birthplace, 1997-98 to 2007-08**

Birthplace	1997-98	1998-99	1999-00	2000-01	2001-02	2002-03	2003-04	2004-05	2005-06	2006-07	2007-08
<i>Northern Europe</i>											
Denmark	12	9	8	11	18	11	14	7	15	16	16
Faroe Islands	-	-	-	-	-	1	-	-	-	1	-
Finland	3	1	2	4	5	4	3	5	3	3	8
Greenland	-	-	-	-	-	-	-	-	1	-	-
Iceland	-	-	-	-	-	-	-	1	-	-	1
Norway	2	4	4	4	1	10	11	3	7	4	5
Sweden	13	13	17	8	13	15	34	22	13	15	21
Total	30	27	31	27	37	41	62	38	39	39	51
<i>Southern Europe</i>											
Gibraltar	-	4	1	1	-	-	-	1	1	1	1
Italy	23	29	23	33	48	20	35	36	34	38	31
Malta	3	1	-	4	-	4	8	7	3	8	12
Portugal	2	4	13	4	10	9	14	16	9	12	16
Spain	3	6	6	7	5	8	10	21	14	20	8
Total	31	44	43	49	63	41	67	81	61	79	68
<i>South Eastern Europe</i>											
Albania	12	2	-	7	3	2	7	6	17	8	3
Bosnia & Herzegovina (b)	245	191	98	91	39	11	13	11	11	14	17
Bulgaria	11	11	7	15	19	8	12	7	8	6	15
Croatia (b)	153	208	166	191	76	62	27	10	5	12	15
Cyprus	5	3	3	1	1	3	4	6	8	7	7
Fmr Yugo Rep of Macedonia (b)	35	41	35	69	41	39	34	27	34	26	64
Greece	12	6	7	3	6	6	4	7	3	1	4
Moldava	-	-	-	-	-	2	-	-	-	-	1
Montenegro (b)	-	-	-	-	-	-	-	-	-	-	1
Romania	21	28	48	29	19	32	40	32	22	41	47
Serbia (b)	-	-	-	-	-	-	-	-	-	2	24
Fmr Serbia & Montenegro (b)	-	338	289	233	197	204	91	59	67	70	40
Slovenia (b)	3	2	1	2	1	1	1	1	1	3	8
Former Yugoslavia nfd (b)	147	-	-	-	-	-	-	-	-	-	-
Total	644	830	654	641	402	370	233	166	176	190	246
<i>Eastern Europe</i>											
Belarus (c)	-	-	3	1	-	-	2	1	-	5	4
Czech Republic (d)	5	5	1	-	2	1	-	5	5	1	8
Estonia (c)	1	-	1	1	-	-	-	3	1	2	3
Former Czechoslovakia (d)	9	14	8	15	7	7	9	15	14	10	13
Hungary	6	3	5	5	5	6	9	6	10	12	11
Latvia (c)	-	-	-	-	-	2	1	3	1	-	1
Lithuania (c)	2	-	2	-	-	1	1	3	4	3	5
Poland	34	42	34	27	27	32	35	36	33	39	37
Russian Federation (c)	15	-	10	8	-	7	16	17	34	22	32
Slovakia (d)	1	1	2	-	-	1	2	-	3	4	4
Ukraine	17	7	2	9	6	9	3	13	15	6	9
Total	90	72	68	66	47	66	78	102	120	104	127
Total Europe	3 479	3 554	3 451	3 307	2 974	4 200	6 014	5 982	7 645	8 333	8 358

(b) As reliable data are not available for component countries prior to 1995-96, care should be taken when interpreting the data. Serbia and Montenegro was previously called the Federal Republic of Yugoslavia and since 1998-99 contains the Former Yugoslavia nfd.

(c) As reliable data are not available for component countries prior to 1995-96, care should be taken when interpreting the data.

(d) As reliable data are not available for component countries prior to 1995-96, care should be taken when interpreting the data.

Western Australia

Table 6.1 (continued) **Settler arrivals by birthplace, 1997-98 to 2007-08**

Birthplace	1997-98	1998-99	1999-00	2000-01	2001-02	2002-03	2003-04	2004-05	2005-06	2006-07	2007-08
North Africa & The Middle East											
<i>North Africa</i>											
Algeria	5	3	2	7	5	2	2	-	2	-	4
Egypt	18	10	20	29	18	30	44	69	50	64	28
Libya	1	3	-	2	-	3	-	2	2	3	3
Morocco	-	-	6	3	-	3	5	3	2	4	5
Sudan	33	31	52	195	144	239	500	789	441	380	203
Tunisia	-	2	-	-	-	2	1	-	3	-	1
Total	57	49	80	236	167	279	552	863	500	451	244
<i>The Middle East</i>											
Bahrain	4	2	-	1	8	-	1	5	3	2	2
Gaza Strip & West Bank	1	-	-	-	-	-	-	1	-	-	-
Iran	71	46	70	108	31	103	124	120	91	88	129
Iraq	82	38	97	94	90	255	97	59	89	76	180
Israel	14	16	9	14	10	17	20	24	24	33	19
Jordan	9	15	18	16	3	10	7	6	11	20	10
Kuwait	10	2	30	10	4	43	14	14	18	2	16
Lebanon	11	12	18	10	18	27	24	30	20	15	18
Oman	-	3	3	1	7	3	1	1	5	4	3
Qatar	1	3	4	1	7	1	3	1	-	6	5
Saudi Arabia	13	2	5	8	1	3	5	7	9	11	13
Syria	3	4	4	10	1	10	13	6	4	8	9
Turkey	24	16	12	18	49	44	27	28	21	22	26
United Arab Emirates	8	12	11	6	12	18	25	17	30	33	41
Yemen	1	2	-	1	1	-	-	-	-	1	1
Middle East nfd	-	-	1	2	3	-	-	2	3	2	1
Total	252	173	282	300	245	534	361	321	328	323	473
Total North Africa & the Middle East	309	222	362	536	412	813	913	1 184	828	774	717
Southeast Asia											
Brunei	7	15	18	28	27	26	28	27	19	24	21
Burma (Myanmar)	38	22	47	44	55	40	43	75	167	266	360
Cambodia	11	4	8	10	12	19	23	21	27	32	31
East Timor (e)	-	-	-	-	1	2	1	6	7	2	1
Indonesia (e)	731	828	890	1 095	1 132	705	534	384	300	307	375
Laos	5	2	1	1	-	2	-	8	6	6	11
Malaysia	219	316	487	473	473	825	903	756	751	702	896
Philippines	174	196	147	127	164	156	228	246	240	345	488
Singapore	264	242	355	419	553	605	697	1 076	936	582	593
Thailand	37	63	73	82	175	167	154	185	211	322	368
Vietnam	137	112	113	105	136	174	166	147	173	228	179
Total Southeast Asia	1 623	1 800	2 139	2 384	2 728	2 721	2 777	2 931	2 837	2 816	3 323

(e) East Timor previously recorded under Indonesia, care should be taken when interpreting the data.

Western Australia

Table 6.1 (continued) **Settler arrivals by birthplace, 1997-98 to 2007-08**

Birthplace	1997-98	1998-99	1999-00	2000-01	2001-02	2002-03	2003-04	2004-05	2005-06	2006-07	2007-08
Northeast Asia											
China (f)	153	201	217	239	231	224	319	362	423	477	612
Hong Kong (g)	100	63	96	74	62	69	78	90	66	77	79
Japan	44	55	42	56	52	65	80	83	70	92	95
Korea	16	12	36	57	42	30	45	58	70	80	106
Macau (g)	2	5	1	3	2	4	3	2	1	2	1
Mongolia	-	-	-	1	-	-	1	-	4	4	10
Taiwan	35	29	32	52	48	35	26	25	29	14	44
Total Northeast Asia	350	365	424	482	437	427	552	620	663	746	947
Southern Asia											
Bangladesh	5	13	15	22	13	13	14	20	33	48	66
Bhutan	-	4	-	-	-	-	-	-	1	-	-
India	234	208	309	328	298	390	401	567	558	853	1 361
Maldives	-	4	-	-	-	-	6	4	3	-	9
Nepal	6	-	6	8	6	3	10	7	9	20	18
Pakistan	19	24	62	45	28	58	65	61	51	62	79
Sri Lanka	53	37	68	97	83	94	97	149	129	212	289
Total Southern Asia	317	290	460	500	428	558	593	808	784	1 195	1 822
Central Asia											
Afghanistan	52	70	51	34	62	136	140	130	205	226	189
Armenia (d)	-	-	-	-	-	8	-	-	-	-	-
Azerbaijan (d)	-	-	-	-	-	-	-	4	7	1	-
Georgia (d)	-	-	1	-	-	-	-	-	-	-	1
Kazakhstan (d)	5	-	3	7	2	2	7	4	1	4	5
Kyrgyzstan (d)	-	-	-	1	-	1	8	12	1	5	2
Tajikistan (d)	1	-	-	-	-	-	-	1	-	-	-
Turkmenistan (d)	-	-	-	1	-	-	-	-	-	3	-
Uzbekistan (d)	-	-	-	-	2	-	1	2	-	6	1
Total Central Asia	58	70	55	43	66	147	156	153	214	245	198
Northern America											
Bermuda	1	-	4	-	-	-	-	-	-	-	-
Canada	115	67	84	97	97	73	74	101	109	91	120
USA	134	98	119	97	115	125	136	160	147	174	132
Total Northern America	250	165	207	194	212	198	210	261	256	265	252

(d) As reliable data are not available for component countries prior to 1995-96, care should be taken when interpreting the data.

(f) Excluding SARs and Taiwan.

(g) SAR of China.

Western Australia

Table 6.1 (continued) **Settler arrivals by birthplace, 1997-98 to 2007-08**

Birthplace	1997-98	1998-99	1999-00	2000-01	2001-02	2002-03	2003-04	2004-05	2005-06	2006-07	2007-08
South America, Central America & the Caribbean											
<i>South America</i>											
Argentina	2	2	7	4	2	12	14	8	7	12	14
Bolivia	-	-	-	-	-	2	-	3	2	1	2
Brazil	6	5	15	7	17	9	12	27	24	31	48
Chile	10	6	16	5	6	11	11	7	6	20	11
Colombia	6	4	3	1	6	13	6	11	11	15	12
Ecuador	-	-	-	-	-	-	1	-	1	3	3
Guyana	-	2	3	6	-	3	-	-	5	2	1
Paraguay	-	2	1	-	-	-	1	1	-	-	-
Peru	2	2	1	4	3	3	6	9	13	23	20
Suriname	-	-	-	-	-	-	-	-	-	1	-
Uruguay	-	-	-	-	-	1	6	1	1	2	3
Venezuela	5	1	4	1	2	4	7	1	13	8	21
Total	31	24	50	28	36	58	64	68	83	118	135
<i>Central America</i>											
Costa Rica	-	-	-	-	1	2	-	-	-	-	-
El Salvador	4	-	2	7	3	4	-	1	3	3	15
Guatemala	-	-	-	-	-	-	-	-	-	-	-
Honduras	-	-	-	-	-	-	-	-	-	-	3
Mexico	4	-	6	2	2	3	2	6	3	7	9
Nicaragua	-	-	-	-	-	-	-	-	-	3	-
Panama	1	-	-	-	-	-	1	-	-	-	-
Total	9	-	8	9	6	9	3	7	6	13	27
<i>The Caribbean</i>											
Bahamas	-	-	-	1	-	1	-	-	-	1	2
Barbados	1	-	-	-	-	2	-	1	-	2	2
Cayman Islands	-	-	-	-	1	-	-	1	-	2	-
Cuba	-	2	1	1	2	1	-	1	4	-	2
Dominican Republic	-	-	-	-	-	-	1	-	1	1	1
Grenada	-	-	1	-	-	-	-	-	1	-	-
Haiti	-	1	-	-	-	-	-	-	-	-	1
Jamaica	2	-	1	3	1	-	4	6	3	3	2
Netherlands Antilles	-	-	-	1	-	-	-	1	1	-	-
Puerto Rico	-	-	1	-	-	-	-	-	-	-	-
St Kitts & Nevis	-	-	-	-	-	-	-	-	-	-	1
Trinidad & Tobago	6	8	-	6	1	3	3	4	-	12	3
Total	9	11	4	12	5	7	8	14	10	21	14
Total South America, Central America & The Caribbean	49	35	62	49	47	74	75	89	99	152	176

Western Australia

Table 6.1 (continued) Settler arrivals by birthplace, 1997-98 to 2007-08

Birthplace	1997-98	1998-99	1999-00	2000-01	2001-02	2002-03	2003-04	2004-05	2005-06	2006-07	2007-08
Sub-Saharan Africa											
<i>Central & West Africa</i>											
Benin	-	-	-	-	-	-	-	-	-	-	4
Burkina Faso	-	-	-	-	-	-	1	-	-	1	-
Cameroon	-	-	-	-	1	1	-	-	-	3	4
Cape Verde	-	-	-	-	-	-	-	-	1	-	1
Central African Republic	-	-	-	-	-	-	-	-	-	1	6
Congo	-	1	3	11	3	5	68	85	17	19	8
Congo Democratic Republic	1	2	-	-	-	6	19	11	42	113	103
Cote D'Ivoire	1	-	-	-	-	-	-	27	6	12	14
Gabon	-	-	-	-	-	-	-	-	1	-	-
Ghana	3	7	2	4	6	8	11	8	24	30	26
Guinea	-	-	-	1	3	4	1	24	14	37	11
Liberia	-	-	-	12	48	25	28	137	98	124	72
Mauritania	-	-	-	-	-	-	-	-	1	-	28
Niger	5	-	-	-	-	1	-	-	-	-	1
Nigeria	1	3	4	4	20	14	17	15	16	30	32
Senegal	-	-	-	1	2	2	-	-	2	-	44
Sierra Leone	-	1	-	48	84	35	25	109	55	79	42
Togo	-	-	-	-	-	-	-	-	-	10	16
Total	11	14	9	81	167	101	170	416	277	459	412
<i>Southern & East Africa</i>											
Angola	-	-	-	-	-	-	-	-	1	1	1
Botswana	20	8	-	3	4	6	13	7	4	4	3
Burundi	-	-	-	2	4	3	4	26	60	69	52
Djibouti	-	-	-	2	1	-	-	1	-	-	-
Eritrea (h)	9	31	24	39	20	15	24	15	33	31	23
Ethiopia (h)	39	53	48	74	49	63	110	82	36	85	58
Kenya	70	153	106	91	157	186	172	179	138	201	170
Lesotho	-	-	-	-	1	-	-	-	-	1	-
Madagascar	-	-	1	1	1	1	-	1	1	2	1
Malawi	1	6	3	4	4	1	12	10	4	10	13
Mauritius	6	18	17	21	35	46	42	50	68	60	88
Mozambique	5	1	2	5	4	6	7	2	1	4	3
Namibia	7	10	13	16	10	13	10	8	13	14	7
Reunion	-	1	-	-	1	-	-	1	2	-	1
Rwanda	-	-	1	-	-	1	8	14	22	20	20
Seychelles	6	8	9	-	10	3	14	7	19	14	12
Somalia	95	55	72	37	32	23	31	25	26	63	48
South Africa	1 220	1 581	1 840	1 584	1 471	1 144	1 550	1 178	1 086	1 101	1 483
Swaziland	3	4	4	1	1	2	5	1	3	-	1
Tanzania	3	8	5	3	8	5	16	25	88	69	58
Uganda	2	2	2	5	7	11	14	37	20	57	44
Zambia	31	19	32	17	39	25	38	29	31	51	34
Zimbabwe	103	121	261	274	367	526	688	432	354	264	334
Southern & East Africa nfd	1	-	-	-	-	-	-	-	-	-	-
Total	1 621	2 079	2 440	2 179	2 226	2 080	2 758	2 130	2 010	2 121	2 454
Total											
Sub-Saharan Africa	1 632	2 093	2 449	2 260	2 393	2 181	2 928	2 546	2 287	2 580	2 866
Supplementary codes (i)											
Fmr USSR	34	56	53	61	71	62	62	55	56	34	60
Total	34	56	53	61	71	62	62	55	56	34	60
Not stated	1	11	14	5	4	6	8	-	3	24	40
Total all countries	9 741	10 672	11 512	11 565	10 954	12 279	15 411	16 318	17 638	19 783	22 738

(h) As reliable data are not available for component countries prior to 1995-96, care should be taken when interpreting the data.

(i) Supplementary codes cannot be classified to any major region in the Standard Australian Classification of Countries (SACC). This may lead to under reporting of their component countries in the rest of the table, care should be taken when interpreting the data.

Tasmania

Table 7.1 Settler arrivals by birthplace, 1997-98 to 2007-08

Birthplace	1997-98	1998-99	1999-00	2000-01	2001-02	2002-03	2003-04	2004-05	2005-06	2006-07	2007-08
Oceania											
<i>Australia & External Territories (a)</i>	2	1	2	3	3	2	2	2	-	6	5
<i>New Zealand</i>	53	96	117	106	73	93	83	84	79	90	131
<i>Melanesia</i>											
Papua New Guinea	1	2	-	-	1	-	-	1	1	-	-
Vanuatu	-	-	-	-	-	-	-	-	-	1	-
<i>Total</i>	1	2	-	-	1	-	-	1	1	1	-
<i>Micronesia</i>											
Kiribati	-	-	-	-	-	1	-	-	-	-	-
<i>Total</i>	-	-	-	-	-	1	-	-	-	-	-
<i>Polynesia (excluding Hawaii)</i>											
Cook Islands	-	-	-	2	-	1	-	-	-	-	-
Fiji	8	2	5	7	11	1	9	2	6	2	3
French Polynesia	-	-	-	-	-	-	-	1	-	-	-
Niue	1	-	-	-	-	-	1	-	-	-	-
Samoa	3	-	1	-	-	3	3	-	-	-	3
Tokelau	-	1	-	-	-	-	-	-	-	-	-
Tonga	1	1	-	2	1	1	-	2	-	1	-
<i>Total</i>	13	4	6	11	12	6	13	5	6	3	6
Total Oceania	69	103	125	120	89	102	98	92	86	100	142
Europe											
<i>United Kingdom & Ireland</i>											
UK	47	40	54	76	64	108	102	171	177	174	202
Ireland	2	4	9	1	1	2	5	4	9	7	6
<i>Total</i>	49	44	63	77	65	110	107	175	186	181	208
<i>Western Europe</i>											
Austria	-	1	-	1	-	-	-	1	1	3	1
Belgium	-	-	-	-	-	-	-	1	-	-	-
France	5	1	2	2	1	1	3	2	3	5	2
Germany	13	10	4	9	10	9	7	9	27	21	20
Netherlands	4	10	11	11	8	12	7	9	7	23	8
Switzerland	-	-	3	1	1	-	3	6	-	-	5
<i>Total</i>	22	22	20	24	20	22	20	28	38	52	36
<i>Northern Europe</i>											
Denmark	1	1	1	1	-	1	2	1	1	-	1
Finland	-	1	-	-	-	1	3	-	-	1	-
Iceland	-	-	-	-	-	-	-	1	-	-	-
Norway	-	-	-	-	-	-	-	-	2	2	-
Sweden	2	-	2	-	-	2	1	1	2	1	-
<i>Total</i>	3	2	3	1	-	4	6	3	5	4	1
<i>Southern Europe</i>											
Italy	-	-	1	2	3	-	2	-	4	-	-
Portugal	-	-	-	-	-	-	-	1	1	-	-
Spain	-	-	-	-	-	1	1	1	-	-	-
<i>Total</i>	-	-	1	2	3	1	3	2	5	-	-

(a) The Australia component consists of persons born in Australia who have settled overseas and returned.

Tasmania

Table 7.1 (continued) **Settler arrivals by birthplace, 1997-98 to 2007-08**

Birthplace	1997-98	1998-99	1999-00	2000-01	2001-02	2002-03	2003-04	2004-05	2005-06	2006-07	2007-08
<i>South Eastern Europe</i>											
Albania	-	-	-	2	1	-	-	1	-	-	-
Bosnia & Herzegovina (b)	41	15	3	2	8	-	1	-	-	-	2
Bulgaria	-	-	-	1	-	-	1	2	-	2	4
Croatia (b)	22	12	2	2	1	6	-	-	1	-	3
Cyprus	-	1	-	-	2	-	1	1	-	-	1
Fmr Yugo Rep of Macedonia (b)	-	-	-	-	1	-	-	-	-	1	1
Greece	-	-	-	3	-	-	1	1	1	3	1
Romania	-	1	2	2	4	-	1	1	-	1	2
Serbia (b)	-	-	-	-	-	-	-	-	-	-	1
Fmr Serbia & Montenegro (b)	-	52	8	28	65	24	8	9	-	3	-
Slovenia (b)	-	-	-	-	-	-	-	-	-	-	2
Former Yugoslavia nfd (b)	22	-	-	-	-	-	-	-	-	-	-
Total	85	81	15	40	82	30	13	15	2	10	17
<i>Eastern Europe</i>											
Belarus (c)	-	-	-	-	-	-	2	-	-	3	2
Former Czechoslovakia (d)	-	2	-	-	1	1	-	-	1	-	-
Hungary	-	3	1	-	-	1	-	-	-	-	2
Latvia (c)	-	-	1	-	1	2	-	2	-	-	-
Poland	-	3	1	4	-	4	7	8	3	5	1
Russian Federation (c)	-	-	1	-	-	1	-	2	3	1	1
Ukraine	1	-	-	-	-	-	-	2	-	1	-
Total	1	8	4	4	2	9	9	14	7	10	6
Total Europe	160	157	106	148	172	176	158	237	243	257	268
North Africa & The Middle East											
<i>North Africa</i>											
Algeria	-	-	-	-	1	-	-	-	-	-	-
Egypt	-	2	-	3	4	9	13	10	10	3	2
Libya	-	-	-	-	-	-	-	1	-	-	1
Morocco	-	1	-	-	-	-	-	-	-	-	1
Sudan	8	16	22	87	71	147	172	172	82	39	38
Tunisia	-	-	1	-	-	-	-	-	-	-	-
Total	8	19	23	90	76	156	185	183	92	42	42
<i>The Middle East</i>											
Bahrain	1	-	-	2	-	-	-	-	-	-	-
Iran	3	6	2	1	7	2	9	4	4	8	11
Iraq	12	1	5	13	4	13	19	5	6	6	2
Israel	-	-	-	-	-	-	-	-	2	2	-
Kuwait	-	-	-	-	-	-	1	1	-	-	1
Lebanon	-	-	-	1	2	2	2	1	2	2	2
Oman	-	-	-	-	-	-	-	-	1	-	-
Qatar	-	-	-	-	-	-	-	-	-	1	-
Saudi Arabia	1	-	4	-	-	-	-	2	-	-	1
Syria	1	2	1	1	-	4	1	1	4	1	1
Turkey	-	1	-	3	3	3	5	-	1	1	-
Yemen	-	-	-	-	3	-	-	1	-	-	-
Total	18	10	12	21	19	24	37	15	20	21	18
Total North Africa & the Middle East	26	29	35	111	95	180	222	198	112	63	60

(b) As reliable data are not available for component countries prior to 1995-96, care should be taken when interpreting the data. Serbia and Montenegro was previously called the Federal Republic of Yugoslavia and since 1998-99 contains the Former Yugoslavia nfd.

(c) As reliable data are not available for component countries prior to 1995-96, care should be taken when interpreting the data.

(d) As reliable data are not available for component countries prior to 1995-96, care should be taken when interpreting the data.

Tasmania

Table 7.1 (continued) Settler arrivals by birthplace, 1997-98 to 2007-08

Birthplace	1997-98	1998-99	1999-00	2000-01	2001-02	2002-03	2003-04	2004-05	2005-06	2006-07	2007-08
Southeast Asia											
Burma (Myanmar)	-	-	-	-	2	-	1	1	-	44	34
Cambodia	-	-	-	-	2	-	-	1	-	1	-
East Timor	-	-	-	-	-	-	-	-	1	-	-
Indonesia	1	2	6	2	14	8	4	4	9	8	8
Laos	1	-	-	-	1	3	-	-	-	-	2
Malaysia	-	3	10	8	5	16	11	12	15	13	20
Philippines	15	15	16	28	18	28	30	40	33	49	46
Singapore	5	6	1	5	5	10	19	35	8	8	21
Thailand	2	4	11	3	16	13	19	10	12	14	25
Vietnam	2	3	4	3	6	7	3	1	3	5	5
Total Southeast Asia	26	33	48	49	69	85	87	104	81	142	161
Northeast Asia											
China (f)	6	12	11	17	15	27	25	31	29	56	62
Hong Kong (g)	5	5	5	1	2	3	3	5	3	4	6
Japan	5	1	2	7	2	5	9	8	4	12	14
Korea	-	3	8	4	6	5	11	35	16	21	32
Mongolia	-	-	-	1	-	3	-	-	2	-	-
Taiwan	-	-	4	5	5	2	1	-	8	6	8
Total Northeast Asia	16	21	30	35	30	45	49	79	62	99	122
Southern Asia											
Bangladesh	-	5	3	1	4	4	-	-	2	1	3
Bhutan	-	-	-	-	-	-	-	-	-	-	16
India	7	10	19	17	11	23	27	30	47	47	68
Maldives	-	-	-	-	-	-	-	-	-	2	-
Nepal	-	-	4	1	1	-	-	-	2	2	2
Pakistan	-	-	4	2	-	1	4	3	1	6	3
Sri Lanka	7	1	2	8	4	5	8	4	6	12	5
Total Southern Asia	14	16	32	29	20	33	39	37	58	70	97
Central Asia											
Afghanistan	-	-	-	5	-	4	39	12	2	11	15
Kazakhstan (d)	-	-	-	-	-	1	-	-	-	-	1
Uzbekistan (d)	-	-	-	-	-	-	-	-	1	-	-
Total Central Asia	-	-	-	5	-	5	39	12	3	11	16
Northern America											
Canada	5	15	15	12	3	10	6	6	14	10	7
USA	18	10	19	7	11	20	17	34	33	19	23
Total Northern America	23	25	34	19	14	30	23	40	47	29	30
South America, Central America & the Caribbean											
<i>South America</i>											
Argentina	-	-	1	-	-	-	9	4	4	2	1
Bolivia	-	-	-	1	-	-	-	-	-	-	1
Brazil	-	8	-	-	2	2	1	4	7	2	6
Chile	3	-	2	1	-	-	2	2	2	-	8
Colombia	-	-	-	-	1	-	1	-	1	1	1
Paraguay	-	-	-	-	1	-	-	-	-	1	-
Peru	-	-	-	-	1	4	-	3	2	1	2
Venezuela	1	-	-	-	-	-	-	-	-	1	-
Total	4	8	3	2	5	6	13	13	16	8	19

(d) As reliable data are not available for component countries prior to 1995-96, care should be taken when interpreting the data.

(f) Excluding SARs and Taiwan.

(g) SAR of China.

Tasmania

Table 7.1 (continued) **Settler arrivals by birthplace, 1997-98 to 2007-08**

Birthplace	1997-98	1998-99	1999-00	2000-01	2001-02	2002-03	2003-04	2004-05	2005-06	2006-07	2007-08
<i>Central America</i>											
Costa Rica	-	-	-	-	1	1	-	-	3	-	-
El Salvador	3	1	-	-	-	-	-	-	-	-	1
Mexico	-	-	-	-	-	-	1	1	1	-	-
Total	3	1	-	-	1	1	1	1	4	-	1
<i>The Caribbean</i>											
Cuba	-	-	-	1	-	-	1	-	-	-	-
Haiti	-	2	-	-	-	-	-	-	-	-	-
Jamaica	1	-	-	-	-	-	-	-	-	1	-
Netherlands Antilles	-	-	-	-	-	-	-	-	-	-	1
Trinidad & Tobago	-	-	-	-	-	-	1	-	-	-	-
Total	1	2	-	1	-	-	2	-	-	1	1
Total South America, Central America & The Caribbean	8	11	3	3	6	7	16	14	20	9	21
Sub-Saharan Africa											
<i>Central & West Africa</i>											
Congo	-	-	-	-	-	1	-	1	-	3	-
Congo Democratic Republic	-	-	-	-	-	-	-	-	1	11	35
Côte d'Ivoire	-	-	-	-	-	-	-	-	-	1	-
Ghana	-	-	-	-	-	1	-	4	5	4	2
Guinea	-	-	-	-	-	1	2	1	-	6	4
Liberia	-	-	-	-	-	-	-	8	8	15	19
Mali	-	-	-	-	-	-	-	-	-	-	1
Niger	-	-	1	-	-	-	-	-	2	-	-
Nigeria	-	-	-	-	-	-	3	-	-	-	-
Senegal	-	-	-	-	-	-	-	-	-	1	-
Sierra Leone	-	-	-	-	14	33	10	42	37	19	12
Togo	-	-	-	-	-	-	-	1	-	-	1
Total	-	-	1	-	14	36	15	57	53	60	74
<i>Southern & East Africa</i>											
Botswana	2	-	-	-	-	-	-	-	-	-	-
Burundi	-	-	-	-	-	-	1	1	21	19	5
Eritrea	-	-	-	-	8	6	13	3	3	2	11
Ethiopia	5	11	7	9	5	46	54	27	19	40	18
Kenya	1	5	-	1	4	10	5	9	1	7	2
Malawi	-	-	-	-	-	1	-	-	-	-	3
Mozambique	-	-	-	-	-	-	-	1	-	1	-
Namibia	-	-	-	-	-	-	-	-	-	-	1
Rwanda	-	-	-	-	-	12	1	-	-	4	1
Seychelles	-	-	-	-	-	-	-	-	3	-	-
Somalia	-	11	-	2	9	2	1	-	-	1	-
South Africa	16	17	17	16	35	27	34	24	34	26	34
Tanzania	-	-	-	-	-	-	1	-	10	11	9
Uganda	-	-	-	-	2	3	7	-	7	7	-
Zambia	-	-	-	-	-	-	3	1	-	-	-
Zimbabwe	1	2	1	2	9	2	6	7	10	4	10
Total	25	46	25	30	72	109	126	73	108	122	94
Total Sub-Saharan Africa	25	46	26	30	86	145	141	130	161	182	168
Supplementary codes (i)											
Fmr USSR	2	1	5	15	7	3	9	1	6	6	7
Total	2	1	5	15	7	3	9	1	6	6	7
Not stated	-	-	-	-	1	-	3	-	-	-	-
Total all countries	369	442	444	564	589	811	884	944	879	968	1 092

(i) Supplementary codes cannot be classified to any major region in the Standard Australian Classification of Countries (SACC). This may lead to under reporting of their component countries in the rest of the table, care should be taken when interpreting the data.

Northern Territory

Table 8.1 Settler arrivals by birthplace, 1997-98 to 2007-08

Birthplace	1997-98	1998-99	1999-00	2000-01	2001-02	2002-03	2003-04	2004-05	2005-06	2006-07	2007-08
Oceania											
<i>Australia & External Territories (a)</i>	2	3	4	4	1	2	6	5	5	1	3
<i>New Zealand</i>	49	93	101	91	63	34	66	46	96	84	106
<i>Melanesia</i>											
New Caledonia	-	-	-	-	-	-	-	-	-	1	-
Papua New Guinea	1	1	4	4	9	6	13	8	6	2	10
Solomon Islands	-	5	1	1	-	-	1	3	-	-	-
Vanuatu	-	-	-	-	-	-	-	-	-	1	2
<i>Total</i>	1	6	5	5	9	6	14	11	6	4	12
<i>Micronesia</i>											
Kiribati	-	1	-	-	4	-	-	1	-	-	-
<i>Total</i>	-	1	-	-	4	-	-	1	-	-	-
<i>Polynesia (excluding Hawaii)</i>											
Cook Islands	2	-	-	-	-	-	1	-	-	-	1
Fiji	2	2	-	6	4	4	1	1	11	2	4
Samoa	3	1	-	-	-	-	1	1	2	-	1
Tonga	-	-	2	2	-	2	1	-	2	-	-
<i>Total</i>	7	3	2	8	4	6	4	2	15	2	6
Total Oceania	59	106	112	108	81	48	90	65	122	91	127
Europe											
<i>United Kingdom & Ireland</i>											
UK	80	79	61	51	36	52	90	91	67	109	106
Ireland	4	3	5	4	6	6	5	6	6	7	8
<i>Total</i>	84	82	66	55	42	58	95	97	73	116	114
<i>Western Europe</i>											
Austria	-	-	-	-	-	-	2	-	-	-	1
Belgium	1	4	-	-	-	-	-	2	-	-	2
France	1	2	6	3	3	2	2	1	1	2	1
Germany	9	11	10	5	7	7	4	14	15	17	5
Netherlands	4	3	11	1	3	2	2	7	1	10	3
Switzerland	1	9	3	-	2	2	2	3	4	-	2
<i>Total</i>	16	29	30	9	15	13	12	27	21	29	14
<i>Northern Europe</i>											
Denmark	1	2	3	1	-	3	-	-	-	1	-
Iceland	-	-	-	1	-	-	-	-	-	-	-
Norway	-	-	-	-	-	-	1	-	-	-	-
Sweden	2	-	-	1	-	3	1	-	-	-	2
<i>Total</i>	3	2	3	3	-	6	2	-	-	1	2
<i>Southern Europe</i>											
Italy	-	-	2	-	-	-	2	-	2	4	5
Malta	-	-	-	-	-	-	-	1	1	1	-
Portugal	1	-	-	1	1	-	1	1	-	-	-
Spain	3	1	1	-	-	1	-	-	1	-	3
<i>Total</i>	4	1	3	1	1	1	3	2	4	5	8

(a) The Australia component consists of persons born in Australia who have settled overseas and returned.

Northern Territory

Table 8.1 (continued) **Settler arrivals by birthplace, 1997-98 to 2007-08**

Birthplace	1997-98	1998-99	1999-00	2000-01	2001-02	2002-03	2003-04	2004-05	2005-06	2006-07	2007-08
<i>South Eastern Europe</i>											
Albania	-	1	-	1	-	-	-	-	1	-	1
Bosnia & Herzegovina (b)	22	9	7	-	2	-	-	1	2	-	-
Bulgaria	-	-	-	-	1	1	-	-	-	1	1
Croatia (b)	6	-	-	1	3	-	-	1	1	-	-
Cyprus	-	2	1	1	-	-	-	-	1	1	1
Fmr Yugo Rep of Macedonia (b)	-	-	-	-	-	-	-	-	1	-	1
Greece	11	14	6	3	4	-	5	7	9	6	6
Romania	-	-	-	-	-	2	1	2	1	-	-
Serbia (b)	-	-	-	-	-	-	-	-	-	-	1
Fmr Serbia & Montenegro (b)	-	5	2	-	2	5	1	1	1	1	1
Former Yugoslavia nfd (b)	2	-	-	-	-	-	-	-	-	-	-
Total	41	31	16	6	12	8	7	12	17	9	12
<i>Eastern Europe</i>											
Czech Republic (d)	-	-	-	-	2	-	-	-	-	-	3
Former Czechoslovakia (d)	-	-	1	1	1	-	-	1	-	2	-
Hungary	1	2	-	-	1	-	-	3	-	1	1
Poland	-	1	1	4	-	-	1	2	6	-	-
Russian Federation	3	-	-	-	4	-	-	1	-	-	4
Slovakia (d)	1	-	-	-	-	-	-	1	-	-	-
Ukraine	1	-	-	-	-	2	-	-	-	-	-
Total	6	3	2	5	8	2	1	8	6	3	8
Total Europe	154	148	120	79	78	88	120	146	121	163	158
North Africa & The Middle East											
<i>North Africa</i>											
Egypt	-	-	-	1	4	1	4	6	9	1	-
Morocco	-	-	1	-	-	1	1	-	-	-	-
Sudan	4	12	17	47	13	56	52	67	45	14	5
Total	4	12	18	48	17	58	57	73	54	15	5
<i>The Middle East</i>											
Iran	1	2	-	1	-	2	1	1	-	2	2
Iraq	8	6	5	4	2	12	5	2	7	1	3
Israel	-	-	-	2	-	1	1	-	-	1	1
Jordan	2	-	-	-	-	-	-	1	-	-	1
Kuwait	-	-	-	-	-	-	-	-	-	-	2
Lebanon	2	2	-	-	2	2	1	2	-	4	4
Oman	2	-	-	-	-	-	-	-	-	-	-
Qatar	-	-	-	1	-	-	-	-	-	1	1
Syria	-	-	-	1	-	-	-	-	-	-	1
Turkey	2	1	2	-	1	-	-	1	3	-	1
United Arab Emirates	-	-	-	-	-	-	1	-	-	1	-
Yemen	-	-	-	2	-	-	-	-	-	-	-
Middle East nfd	-	-	-	1	-	-	-	-	-	-	-
Total	17	11	7	12	5	17	9	7	10	10	16
Total North Africa & the Middle East	21	23	25	60	22	75	66	80	64	25	21

(b) As reliable data are not available for component countries prior to 1995-96, care should be taken when interpreting the data. Serbia and Montenegro was previously called the Federal Republic of Yugoslavia and since 1998-99 contains the Former Yugoslavia nfd.

(c) As reliable data are not available for component countries prior to 1995-96, care should be taken when interpreting the data.

(d) As reliable data are not available for component countries prior to 1995-96, care should be taken when interpreting the data.

Northern Territory

Table 8.1 (continued) Settler arrivals by birthplace, 1997-98 to 2007-08

Birthplace	1997-98	1998-99	1999-00	2000-01	2001-02	2002-03	2003-04	2004-05	2005-06	2006-07	2007-08
Southeast Asia											
Brunei	6	6	1	-	3	-	3	1	8	1	1
Burma (Myanmar)	-	-	-	1	1	3	-	2	-	6	19
Cambodia	1	3	3	2	7	5	4	2	6	5	8
East Timor (e)	-	-	-	5	7	13	11	7	9	9	7
Indonesia (e)	22	26	19	22	40	39	33	20	32	40	50
Laos	-	-	-	-	-	1	-	1	-	-	1
Malaysia	6	3	8	20	4	9	12	3	21	21	34
Philippines	58	41	47	30	40	46	53	48	66	118	83
Singapore	3	7	2	6	12	2	4	5	47	25	29
Thailand	6	9	12	12	31	22	28	18	17	38	61
Vietnam	11	11	9	5	12	12	10	14	12	14	18
Total Southeast Asia	113	106	101	103	157	152	158	121	218	277	311
Northeast Asia											
China (f)	13	11	11	11	16	8	14	15	29	44	46
Hong Kong (g)	14	10	2	-	1	1	-	2	4	1	3
Japan	3	6	1	2	3	5	2	4	2	4	6
Korea	3	1	3	2	3	1	3	3	3	-	5
Macau (g)	-	-	-	-	-	-	-	-	-	-	-
Taiwan	3	2	-	1	2	-	1	1	2	2	3
Total Northeast Asia	36	30	17	16	25	15	20	25	40	51	63
Southern Asia											
Bangladesh	1	-	6	1	-	3	5	1	4	5	8
Bhutan	-	-	-	-	-	-	-	-	-	-	1
India	6	13	24	20	18	14	25	32	32	33	61
Nepal	1	-	-	-	-	-	3	-	3	2	4
Pakistan	-	3	1	6	1	8	10	6	9	8	10
Sri Lanka	8	3	7	13	2	10	5	9	2	11	8
Total Southern Asia	16	19	38	40	21	35	48	48	50	59	92
Central Asia											
Afghanistan	-	1	-	2	1	1	2	-	3	5	3
Total Central Asia	-	1	-	2	1	1	2	-	3	5	3
Northern America											
Canada	9	3	4	6	1	1	6	4	4	1	3
USA	7	12	12	15	8	6	10	6	22	15	6
Total Northern America	16	15	16	21	9	7	16	10	26	16	9
South America, Central America & the Caribbean											
<i>South America</i>											
Argentina	2	-	-	1	-	-	-	-	1	-	-
Bolivia	-	-	-	-	-	2	-	-	-	-	-
Brazil	-	1	1	2	-	1	1	1	3	2	6
Chile	2	-	-	-	-	-	1	-	-	-	-
Colombia	-	-	-	-	3	-	-	-	-	1	2
Ecuador	-	-	-	-	-	-	-	-	1	-	1
Falkland Islands	-	-	-	-	-	-	2	-	-	-	-
Peru	-	-	-	-	-	2	2	1	-	4	-
Venezuela	-	-	-	-	-	-	-	-	-	-	1
Total	4	1	1	3	3	5	6	2	5	7	10

(e) East Timor previously recorded under Indonesia, care should be taken when interpreting the data.

(f) Excluding SARs and Taiwan.

(g) SAR of China.

Northern Territory

Table 8.1 (continued) Settler arrivals by birthplace, 1997-98 to 2007-08

Birthplace	1997-98	1998-99	1999-00	2000-01	2001-02	2002-03	2003-04	2004-05	2005-06	2006-07	2007-08
<i>Central America</i>											
Belize	-	-	-	-	-	-	-	-	-	-	1
Guatemala	-	-	-	-	-	-	-	-	1	-	4
Honduras	-	-	-	-	-	-	-	-	1	1	-
Mexico	-	1	-	-	-	-	-	-	-	-	-
Total	-	1	-	-	-	-	-	-	2	1	5
<i>The Caribbean</i>											
Cuba	-	-	-	-	-	-	-	-	-	-	2
Dominican Republic	-	-	-	-	-	-	-	1	-	-	-
Haiti	-	-	-	-	6	-	-	-	-	-	-
Jamaica	-	-	-	-	-	-	-	-	1	-	-
St Kitts & Nevis	-	-	-	-	-	-	-	-	-	-	1
Total	-	-	-	-	6	-	-	1	1	-	3
Total South America, Central America & The Caribbean	4	2	1	3	9	5	6	3	8	8	18
Sub-Saharan Africa											
<i>Central & West Africa</i>											
Cameroon	-	-	-	-	-	-	-	-	-	-	1
Congo	-	-	-	-	-	-	16	5	3	1	1
Congo, Democratic Republic of	-	-	-	-	-	-	-	-	-	38	17
Cote D'Ivoire	-	-	-	-	-	-	-	1	1	-	3
Ghana	-	-	-	-	-	-	4	1	5	4	1
Guinea	-	-	-	-	-	-	3	4	2	2	-
Liberia	-	-	-	-	20	3	4	20	24	11	12
Nigeria	-	-	-	-	1	6	3	1	1	-	1
Sierra Leone	-	-	-	3	1	-	-	2	2	-	3
Total	-	-	-	3	22	9	30	34	38	56	39
<i>Southern & East Africa</i>											
Botswana	-	-	-	-	-	1	-	-	-	1	-
Burundi	-	-	-	-	-	-	-	4	1	4	2
Djibouti	-	-	-	-	1	-	-	-	-	-	-
Eritrea	-	-	-	-	-	2	-	-	-	-	-
Ethiopia	2	8	15	7	7	9	10	10	2	5	2
Kenya	-	4	1	9	-	7	6	4	25	9	4
Madagascar	-	-	-	-	1	-	-	-	-	1	-
Malawi	-	-	-	-	-	-	-	-	-	1	-
Mauritius	-	-	-	-	-	3	-	-	-	-	-
Mozambique	-	-	-	-	1	-	-	-	-	-	-
Namibia	-	-	-	-	-	-	-	-	1	-	-
Rwanda	-	-	-	-	-	-	-	-	7	1	1
Somalia	-	1	-	2	-	1	1	6	10	31	3
South Africa	7	7	19	8	12	17	8	13	11	9	14
Tanzania	1	-	-	-	-	-	1	1	4	6	7
Uganda	-	-	-	-	-	2	3	5	9	11	1
Zambia	-	-	-	-	2	1	-	1	2	4	2
Zimbabwe	5	4	4	10	4	-	5	12	14	9	5
Total	15	24	39	36	28	43	34	56	86	92	41
Total Sub-Saharan Africa	15	24	39	39	50	52	64	90	124	148	80
Supplementary codes (i)											
Fmr USSR	1	-	2	1	6	5	6	4	4	-	6
Total	1	-	2	1	6	5	6	4	4	-	6
Not stated	-	-	-	-	-	-	-	-	-	-	-
Total all countries	435	474	471	472	459	483	596	592	780	843	888

(i) Supplementary codes cannot be classified to any major region in the Standard Australian Classification of Countries (SACC). This may lead to under reporting of their component countries in the rest of the table, care should be taken when interpreting the data.

Australian Capital Territory

Table 9.1 Settler arrivals by birthplace, 1997-98 to 2007-08

Birthplace	1997-98	1998-99	1999-00	2000-01	2001-02	2002-03	2003-04	2004-05	2005-06	2006-07	2007-08
Oceania											
<i>Australia & External Territories (a)</i>											
<i>New Zealand</i>	5	4	4	9	5	4	9	14	6	6	1
<i>Melanesia</i>	83	161	124	195	133	87	89	85	96	123	117
New Caledonia	-	-	-	-	-	-	-	1	-	1	-
Papua New Guinea	1	-	-	-	-	7	-	6	-	4	3
Solomon Islands	-	-	3	-	-	-	1	2	1	-	-
Vanuatu	-	-	-	-	-	1	-	-	-	-	-
<i>Total</i>	1	-	3	-	-	8	1	9	1	5	3
<i>Micronesia</i>											
Guam	2	-	-	-	-	-	-	-	-	1	-
Northern Mariana Islands	-	-	-	-	-	-	-	-	-	-	1
<i>Total</i>	2	-	-	-	-	-	-	-	-	1	1
<i>Polynesia (excluding Hawaii)</i>											
Cook Islands	-	-	-	-	2	-	1	-	-	-	1
Fiji	7	16	16	24	12	22	12	18	26	16	11
Niue	-	1	-	-	-	-	2	1	-	-	2
Samoa	8	10	6	7	6	8	7	5	4	1	6
Samoa American	-	-	2	1	-	-	-	-	-	-	-
Tonga	7	3	3	1	3	3	2	3	3	7	1
Tuvalu	-	-	1	-	-	-	-	-	-	-	-
<i>Total</i>	22	30	28	33	23	33	24	27	33	24	21
Total Oceania	113	195	159	237	161	132	123	135	136	159	143
Europe											
<i>United Kingdom & Ireland</i>											
UK	61	69	70	100	92	105	158	138	133	137	175
Ireland	9	2	2	2	-	6	2	6	5	3	18
<i>Total</i>	70	71	72	102	92	111	160	144	138	140	193
<i>Western Europe</i>											
Austria	2	1	2	2	2	-	1	-	2	7	-
Belgium	4	1	1	1	4	-	2	-	-	1	3
France	4	2	3	5	10	6	6	3	8	4	5
Germany	9	3	10	24	10	8	12	12	21	18	20
Netherlands	8	4	9	6	8	2	2	4	7	3	10
Switzerland	3	7	1	2	4	-	1	-	4	2	7
<i>Total</i>	30	18	26	40	38	16	24	19	42	35	45
<i>Northern Europe</i>											
Denmark	3	3	2	1	1	6	1	-	-	-	1
Finland	6	-	1	1	-	3	1	1	2	1	-
Iceland	-	-	-	2	-	-	-	-	-	-	-
Norway	1	-	-	1	-	1	4	-	-	1	-
Sweden	1	2	3	-	4	5	3	3	3	3	2
<i>Total</i>	11	5	6	5	5	15	9	4	5	5	3

(a) The Australia component consists of persons born in Australia who have settled overseas and returned.

Australian Capital Territory

Table 9.1 (continued) **Settler arrivals by birthplace, 1997-98 to 2007-08**

Birthplace	1997-98	1998-99	1999-00	2000-01	2001-02	2002-03	2003-04	2004-05	2005-06	2006-07	2007-08
<i>Southern Europe</i>											
Italy	3	4	-	1	25	4	3	2	4	1	3
Malta	-	-	1	2	-	1	-	-	2	-	14
Portugal	-	-	-	-	-	1	2	-	-	-	-
Spain	-	2	-	1	2	-	1	-	1	3	8
Total	3	6	1	4	27	6	6	2	7	4	25
<i>South Eastern Europe</i>											
Albania	-	-	1	-	-	6	-	-	-	2	1
Bosnia & Herzegovina (b)	10	10	6	7	5	1	3	1	1	1	-
Bulgaria	-	-	-	-	1	4	-	3	-	-	4
Croatia (b)	5	8	13	22	4	4	1	-	-	6	-
Cyprus	-	-	-	-	-	-	1	-	-	-	-
Fmr Yugo Rep of Macedonia (b)	9	8	-	4	11	16	1	11	7	5	5
Greece	3	1	-	1	-	3	-	-	1	2	1
Montenegro (b)	-	-	-	-	-	-	-	-	-	1	-
Romania	-	8	12	5	1	1	7	3	2	3	5
Serbia (b)	-	-	-	-	-	-	-	-	-	-	3
Fmr Serbia & Montenegro (b)	-	31	42	43	35	13	11	10	13	3	11
Slovenia (b)	1	-	1	-	-	1	-	-	2	-	1
Former Yugoslavia nfd (b)	10	-	-	-	-	-	-	-	-	-	-
Total	38	66	75	82	57	49	24	28	26	23	31
<i>Eastern Europe</i>											
Belarus (c)	-	-	2	-	-	-	3	-	-	-	-
Czech Republic (d)	1	1	1	-	-	1	-	-	-	-	-
Estonia (c)	-	-	-	1	-	-	-	-	-	-	-
Former Czechoslovakia (d)	-	3	2	-	1	7	1	1	1	3	2
Hungary	1	1	-	-	2	1	1	-	-	-	-
Latvia (c)	-	-	-	-	-	1	-	-	1	-	1
Lithuania (c)	1	-	-	-	-	1	-	-	-	-	-
Poland	11	6	4	6	5	5	-	2	8	1	3
Russian Federation (c)	2	2	1	2	4	3	4	8	5	3	5
Slovakia (d)	1	-	-	-	-	-	1	-	1	-	-
Ukraine	5	-	3	1	1	-	1	1	3	2	-
Total	22	13	13	10	13	19	11	12	19	9	11
Total Europe	174	179	193	243	232	216	234	209	237	216	308
North Africa & The Middle East											
<i>North Africa</i>											
Algeria	-	-	-	14	1	-	-	-	1	-	1
Egypt	3	3	1	1	1	1	5	2	12	11	11
Libya	1	-	-	-	-	-	-	-	-	-	1
Morocco	1	-	-	-	1	-	1	2	1	-	1
Sudan	-	15	2	7	18	15	50	65	28	20	22
Total	5	18	3	22	21	16	56	69	42	31	36

(b) As reliable data are not available for component countries prior to 1995-96, care should be taken when interpreting the data. Serbia and Montenegro was previously called the Federal Republic of Yugoslavia and since 1998-99 contains the Former Yugoslavia nfd.

(c) As reliable data are not available for component countries prior to 1995-96, care should be taken when interpreting the data.

(d) As reliable data are not available for component countries prior to 1995-96, care should be taken when interpreting the data.

Australian Capital Territory

Table 9.1 (continued) Settler arrivals by birthplace, 1997-98 to 2007-08

Birthplace	1997-98	1998-99	1999-00	2000-01	2001-02	2002-03	2003-04	2004-05	2005-06	2006-07	2007-08
<i>The Middle East</i>											
Gaza Strip & West Bank	-	1	-	-	-	-	-	-	-	-	-
Iran	4	4	8	15	13	16	6	19	12	16	5
Iraq	3	8	7	7	16	37	12	10	21	12	42
Israel	2	-	-	-	-	-	4	1	8	1	5
Jordan	1	1	3	4	1	1	2	5	2	2	1
Kuwait	-	-	-	1	-	-	-	-	-	2	2
Lebanon	4	8	5	8	6	10	6	9	7	7	11
Saudi Arabia	-	-	-	-	1	1	3	1	-	1	-
Syria	-	-	1	-	5	1	-	1	-	2	2
Turkey	2	1	2	5	2	6	3	4	2	4	5
United Arab Emirates	-	-	-	1	1	2	-	-	-	2	3
Yemen	-	-	-	-	-	-	1	-	-	6	1
Total	16	23	26	41	45	74	37	50	52	55	77
Total North Africa & the Middle East	21	41	29	63	66	90	93	119	94	86	113
Southeast Asia											
Brunei	-	-	-	-	-	1	-	-	-	-	-
Burma (Myanmar)	14	6	5	6	23	9	5	10	10	11	58
Cambodia	3	-	2	4	4	3	7	8	6	9	6
East Timor (e)	-	-	-	-	1	-	1	-	1	1	1
Indonesia (e)	6	9	10	11	37	12	9	8	13	20	13
Laos	1	-	1	4	1	3	1	2	3	-	4
Malaysia	5	8	7	9	14	6	26	16	21	14	17
Philippines	36	27	28	49	51	19	33	43	77	53	88
Singapore	5	1	-	10	5	9	6	16	16	7	7
Thailand	9	7	13	6	27	22	20	16	26	19	24
Vietnam	12	18	11	28	25	34	29	18	37	32	34
Total Southeast Asia	91	76	77	127	188	118	137	137	210	166	252
Northeast Asia											
China (f)	52	45	77	76	82	58	87	125	143	140	153
Hong Kong (g)	19	13	8	17	6	8	7	11	14	10	8
Japan	6	7	16	5	16	11	4	9	10	9	15
Korea	7	9	19	15	6	16	14	12	22	13	18
Macau (g)	-	-	-	-	1	1	-	-	3	-	-
Mongolia	-	1	-	1	2	-	-	-	-	-	-
Taiwan	5	5	8	13	19	9	5	7	2	5	-
Total Northeast Asia	89	80	128	127	132	103	117	164	194	177	194
Southern Asia											
Bangladesh	-	9	8	10	14	16	17	40	25	26	27
Bhutan	1	-	-	-	-	-	-	-	-	-	-
India	34	44	67	90	58	67	115	112	117	168	198
Nepal	-	-	2	-	1	6	-	9	2	7	5
Pakistan	2	8	2	32	42	11	26	25	23	29	39
Sri Lanka	23	19	25	43	37	15	20	41	41	58	53
Total Southern Asia	60	80	104	175	152	115	178	227	208	288	322

(e) East Timor previously recorded under Indonesia, care should be taken when interpreting the data.

(f) Excluding SARs and Taiwan.

(g) SAR of China.

Australian Capital Territory

Table 9.1 (continued) **Settler arrivals by birthplace, 1997-98 to 2007-08**

Birthplace	1997-98	1998-99	1999-00	2000-01	2001-02	2002-03	2003-04	2004-05	2005-06	2006-07	2007-08
Central Asia											
Afghanistan	-	3	14	5	19	8	19	10	16	7	19
Armenia (d)	-	-	-	-	-	-	-	1	-	-	-
Azerbaijan (d)	-	-	-	-	-	1	-	-	-	-	-
Georgia (d)	-	-	4	-	-	-	-	-	-	-	-
Kazakhstan (d)	-	-	-	1	-	-	-	-	2	-	2
Uzbekistan (d)	-	-	-	-	-	1	-	-	-	-	-
Total Central Asia	-	3	18	6	19	10	19	11	18	7	21
Northern America											
Bermuda	-	-	-	-	-	-	1	-	1	-	-
Canada	26	10	12	12	10	14	13	16	17	15	8
USA	32	28	18	31	23	29	27	28	41	36	23
Total Northern America	58	38	30	43	33	43	41	44	59	51	31
South America, Central America & the Caribbean											
<i>South America</i>											
Argentina	-	-	4	1	2	4	4	2	4	1	2
Bolivia	-	-	-	-	-	-	-	-	-	1	1
Brazil	1	2	5	14	13	10	10	7	2	6	4
Chile	10	1	-	2	1	7	4	3	4	6	6
Colombia	-	-	-	1	-	5	1	1	2	5	1
Ecuador	-	-	-	-	-	1	1	1	-	-	1
Paraguay	-	-	-	-	-	-	-	1	-	-	-
Peru	-	1	-	-	-	1	3	4	2	4	5
Uruguay	-	-	-	-	-	-	-	-	-	1	-
Venezuela	-	-	1	-	-	-	-	-	5	-	1
Total	11	4	10	18	16	28	23	19	19	24	21
<i>Central America</i>											
El Salvador	-	-	-	-	-	-	-	-	-	-	2
Guatemala	-	-	-	-	-	-	1	-	-	1	-
Mexico	3	2	1	2	1	7	6	3	-	-	1
Nicaragua	-	-	-	-	-	-	-	-	1	-	-
Panama	-	-	-	-	-	-	-	1	-	-	-
Total	3	2	1	2	1	7	7	4	1	1	3
<i>The Caribbean</i>											
Cuba	-	-	-	-	1	-	-	-	-	-	-
Jamaica	-	-	-	-	-	-	-	-	1	-	-
Virgin Islands United States	-	-	-	-	-	-	1	-	-	-	-
Total	-	-	-	-	1	-	1	-	1	-	-
Total South America, Central America & The Caribbean	14	6	11	20	18	35	31	23	21	25	24

(d) As reliable data are not available for component countries prior to 1995-96, care should be taken when interpreting the data.

Australian Capital Territory

Table 9.1 (continued) **Settler arrivals by birthplace, 1997-98 to 2007-08**

Birthplace	1997-98	1998-99	1999-00	2000-01	2001-02	2002-03	2003-04	2004-05	2005-06	2006-07	2007-08
Sub-Saharan Africa											
<i>Central & West Africa</i>											
Cameroon	-	-	-	-	-	-	-	-	-	1	-
Congo	-	-	-	-	-	1	1	-	2	1	-
Congo Democratic Republic of	-	-	-	-	-	-	-	-	12	1	3
Ghana	4	1	4	5	3	3	7	4	7	3	4
Guinea	-	-	-	-	-	-	1	-	-	-	2
Liberia	-	1	-	-	1	3	2	2	39	5	5
Niger	-	-	1	-	4	-	-	-	-	1	-
Nigeria	-	2	-	1	2	-	1	2	3	2	5
Senegal	-	-	-	-	-	-	-	1	-	-	-
Sierra Leone	-	-	-	-	8	-	8	43	8	7	6
Total	4	4	5	6	18	7	20	52	71	21	25
<i>Southern & East Africa</i>											
Botswana	-	-	-	-	-	-	1	1	1	-	1
Burundi	-	-	-	-	-	-	-	3	32	11	-
Eritrea (h)	1	-	1	-	-	-	2	6	2	-	2
Ethiopia (h)	4	-	5	4	11	6	14	18	3	4	5
Kenya	2	8	1	3	4	5	8	12	3	13	5
Lesotho	-	-	-	-	-	-	-	3	-	-	-
Malawi	-	-	-	-	-	-	-	-	3	-	-
Mauritius	-	-	2	1	-	3	-	1	-	-	9
Mozambique	2	-	-	-	-	-	-	-	-	-	-
Namibia	1	-	-	-	-	-	-	-	-	-	-
Réunion	-	-	-	-	-	-	-	-	-	1	-
Rwanda	-	-	-	-	-	-	-	-	-	-	1
Somalia	-	3	1	1	1	3	1	-	1	1	-
South Africa	16	27	29	37	22	44	18	35	9	35	39
Tanzania	-	-	-	-	-	-	1	1	25	3	7
Uganda	-	1	1	-	-	-	1	1	1	4	3
Zambia	-	1	-	-	5	1	-	1	-	1	-
Zimbabwe	5	2	2	1	1	8	3	5	29	38	5
Total	31	42	42	47	44	70	49	87	109	111	77
Total											
Sub-Saharan Africa	35	46	47	53	62	77	69	139	180	132	102
Supplementary codes (i)											
Fmr USSR	2	19	12	21	12	18	7	9	15	4	8
Total	2	19	12	21	12	18	7	9	15	4	8
Not stated	-	-	1	-	-	-	1	-	-	-	-
Total all countries	657	763	809	1 115	1 075	957	1 050	1 217	1 372	1 311	1 518

(h) As reliable data are not available for component countries prior to 1995-96, care should be taken when interpreting the data.

(i) Supplementary codes cannot be classified to any major region in the Standard Australian Classification of Countries (SACC). This may lead to under reporting of their component countries in the rest of the table, care should be taken when interpreting the data.

Explanatory notes

Definition of 'Settler'

Settlers comprise persons arriving in Australia who are one of the following:

- Holder of a permanent visas.
- Holder of a temporary (provisional) visa where there is a clear intention to settle.
- New Zealand citizens who indicate an intention to settle.
- A person otherwise eligible to settle.

Migration and Humanitarian Programs

The Migration (non-Humanitarian) Program is made up of Family Stream, Skill Stream and Special Eligibility migrants. The Humanitarian Program is made up of Refugee, Special Humanitarian and Special Assistance migrants.

Eligibility categories

Eligibility categories reflect both the Migration and Humanitarian programs' permanent visa sub-classes under which settlers entered Australia. In addition there are a number of categories of settlers which are not covered by the Migration or Humanitarian programs.

The Family Stream consists of a number of categories under which a potential migrant can be sponsored by a relative who is an Australian citizen or a permanent resident of Australia. The Family Stream comprises the following categories:

- Spouse
- Prospective marriage
- Child
- Adoption
- Parent (meeting the balance of family test)
- Aged dependent relative
- Last remaining relative
- Orphan dependent relative
- Special need relative
- Interdependency.

From 1 July 1997 the Concessional category was moved to the Skill Stream and renamed Skilled Australian Linked it was then renamed Skilled Australian Sponsored from 1 July 1999 to reflect changes to the requirements such as age and work skills as well as various sponsor attributes.

The Skill Stream component of the migration program is designed to contribute to Australia's economic growth. It consists of a number of categories for prospective migrants related to

demand in Australia for their particular occupational skills, outstanding talents or business skills. These categories are:

- Skilled-Australian Linked (previously known as Concessional Family to 30/6/97 then as Australian Linked to 30/6/99) allows Australian citizens or residents to sponsor their parents, brothers, sisters, nephews, nieces and non-dependent children. Applicants must meet a points test which takes into account their age and work skills as well as various sponsor attributes.
- Skilled Designated Area Sponsored (Regional Linked from 1/11/96 to 30/6/99) allows sponsorship of skilled relatives to designated areas of Australia. Both applicants and sponsors must satisfy certain criteria.
- Employer Nomination for highly skilled persons nominated by employers in Australia who have been unable to find or train skilled workers in Australia for the position. This includes the Labour Agreement category for persons who are nominated by an employer or organisation under a Labour Agreement, Regional Headquarters Agreement or the Regional Sponsored Migration Scheme and who have the skills, qualifications, and experience required.
- Business Skills for successful business persons with established skills who have a genuine commitment to owning and managing a business in Australia.
- Distinguished Talent for persons who have outstanding records of achievement in a profession, occupation, the arts or sport.
- Independent for unsponsored applicants whose education, skills, English language ability and ready employability will contribute to the Australian economy.
- State/Territory Nominated Independent: for persons who are interested in settling in states and territories where their skills are in demand and who have a sound chance of gaining employment in that state or territory soon after their arrival. Skill Matching has been included under this category.
- Skilled – Independent Regional (Provisional): for skilled persons who are unable to meet the passmark for a permanent visa and wish to live and work in a regional or low population growth metropolitan area in Australia.

There is also a Special Eligibility category which caters for other types of visaed settler arrivals

within the Migration program but not included in the Family or Skill Streams. These are:

- Former citizen of Australia.
- Former resident of Australia.
- Family of New Zealand Citizen for dependents of New Zealand citizens who have settled or intend to settle permanently in Australia.

The Humanitarian program has two parts:

- Offshore resettlement program.
- Onshore protection for those persons already in Australia who arrived on temporary visas or in an unauthorised manner, and who claim Australia's protection.

The offshore resettlement program comprises three categories:

- The Refugee program which provides resettlement to Australia for persons outside their home country subject to persecution in their home country.
- Special Humanitarian programs (SHP) which comprise the In-country Special Humanitarian program for persons suffering persecution within their own country, and the Global Special Humanitarian program for persons who have left their country because of substantial discrimination amounting to a gross violation of human rights.

In addition there are some categories not covered by the Migration or Humanitarian programs. These are:

- New Zealand Citizens which refers to the arrival of New Zealand citizens under the Trans-Tasman Travel Arrangement.
- Other which refers primarily to the arrival in Australia of children born to Australian citizens overseas. It also includes residents of Cocos (Keeling) Islands, Norfolk Island etc, and persons granted Australian citizenship overseas.

Classification of countries and regions

Statistics in this publication are classified to regions and countries based on the Australian Bureau of Statistics (ABS) *Standard Australian Classification of Countries* (SACC). The classification is based on the concept of geographic proximity. It groups neighbouring countries into broad geographic areas on the basis of their similarity in terms of social, cultural, economic and political characteristics.

The country classification used in this report is listed on page 65. In the tables in this publication some minor groups have been combined due to space limitations. For further information about SACC and for copies of the classification please contact the ABS.

Australia and External Territories

Following amendments to Section 17(a) of the Acts Interpretation Act 1901 - 1973 effective 1 July 1992, the territories of Christmas Island and Cocos (Keeling) Islands now form part of geographic Australia. The Jervis Bay Territory has always been a territory in its own right, and following self-government for the Australian Capital Territory (ACT) it is no longer included with the ACT for statistical purposes. These three territories are classified as the ninth state/territory of Australia.

Australian External Territories comprises the statistical units of Norfolk Island and Other Australian External Territories.

Former Yugoslavia

Separate data for the federation of Serbia and Montenegro has been available since July 1998, Montenegro declared its independence on 3 June 2006. Prior to July 1998 the Former Yugoslavia nfd component was a substantial proportion of total Former Yugoslavia. Consequently the separate figures for the individual countries were likely to be significantly understated.

Former USSR

The separate figures for component countries of the former USSR are likely to be understated and should be used with caution.

Ethiopia and Eritrea

Caution is also required when using data for Ethiopia. This figure may include arrivals born in Eritrea since settlers who reported Ethiopia as their country of birth were coded as such, despite the fact that they may have been born in what is now called Eritrea.

Additional data

The Department of Immigration and Citizenship offers a range of tables not published in this report, upon request. Statistics on settler arrivals can be cross-tabulated with the following data items:

- Country of birth
- Country of citizenship
- Country of last residence
- State/territory of intended residence
- Sex
- Age
- Migration category
- Occupation
- Applicant type (Primary, Secondary).

More complex requests for data and requests for multiple years of data do incur a charge.

Symbols and abbreviations

The following symbols or abbreviations are used throughout this publication:

excl	=	excluding
na	=	not available
nec	=	not elsewhere classified
nei	=	not elsewhere included
nfd	=	not further defined
nya	=	not yet available
p	=	preliminary
r	=	revised
-	=	nil
..	=	not applicable

Rounding

Where figures have been rounded, discrepancies may occur between sums of the component items and totals.

Country classification (based on SACC)

OCEANIA AND ANTARCTICA

Australia (includes External Territories)

Australia
Norfolk Island
Australian External Territories, nec

New Zealand

New Zealand

Melanesia

New Caledonia
Papua New Guinea
Solomon Islands
Vanuatu

Micronesia

Guam
Kiribati
Marshall Islands
Micronesia, Federated States of
Nauru
Northern Mariana Islands
Palau

Polynesia (excludes Hawaii)

Cook Islands
Fiji
French Polynesia
Niue
Samoa
Samoa, American
Tokelau
Tonga
Tuvalu
Wallis and Futuna
Polynesia (excludes Hawaii), nec

Antarctica

Adélie Land (France)
Argentinian Antarctic Territory
Australian Antarctic Territory
British Antarctic Territory
Chilean Antarctic Territory
Queen Maud Land (Norway)
Ross Dependency (New Zealand)

NORTH-WEST EUROPE

United Kingdom

Channel Islands
England
Isle of Man
Northern Ireland
Scotland
Wales

Ireland

Ireland

Western Europe

Austria
Belgium
France
Germany
Liechtenstein
Luxembourg
Monaco
Netherlands
Switzerland

Northern Europe

Denmark
Faroe Islands
Finland
Greenland
Iceland
Norway
Sweden

SOUTHERN AND EASTERN EUROPE

Southern Europe

Andorra
Gibraltar
Holy See
Italy
Malta
Portugal
San Marino
Spain

South Eastern Europe

Albania
Bosnia and Herzegovina
Bulgaria
Croatia
Cyprus
Former Serbia and Montenegro
Former Yugoslav Republic of Macedonia
Greece
Kosovo
Moldova
Montenegro
Romania
Serbia
Slovenia
Yugoslavia, Federal Republic of

Eastern Europe

Belarus
 Czech Republic
 Estonia
 Hungary
 Latvia
 Lithuania
 Poland
 Russian Federation
 Slovakia
 Ukraine

NORTH AFRICA AND THE MIDDLE EAST**North Africa**

Algeria
 Egypt
 Libya
 Morocco
 Spanish North Africa
 Sudan
 Tunisia
 Western Sahara

Middle East

Bahrain
 Gaza Strip and West Bank
 Iran
 Iraq
 Israel
 Jordan
 Kuwait
 Lebanon
 Oman
 Qatar
 Saudi Arabia
 Syria
 Turkey
 United Arab Emirates
 Yemen

SOUTH-EAST ASIA**Mainland South-East Asia**

Burma (Myanmar)
 Cambodia
 Laos
 Thailand
 Vietnam

Maritime South-East Asia

Brunei Darussalam
 Indonesia
 Malaysia
 Philippines
 Singapore

NORTH-EAST ASIA**Chinese Asia (includes Mongolia)**

China (excludes SARs and Taiwan)
 Hong Kong (SAR of China)
 Macau (SAR of China)
 Mongolia
 Taiwan

Japan and the Koreas

Japan
 Korea, Democratic People's Republic of (North)
 Korea, Republic of (South)

SOUTHERN AND CENTRAL ASIA**Southern Asia**

Bangladesh
 Bhutan
 India
 Maldives
 Nepal
 Pakistan
 Sri Lanka

Central Asia

Afghanistan
 Armenia
 Azerbaijan
 Georgia
 Kazakhstan
 Kyrgyzstan
 Tajikistan
 Turkmenistan
 Uzbekistan

AMERICAS**Northern America**

Bermuda
 Canada
 St Pierre and Miquelon
 United States of America

South America

Argentina
 Bolivia
 Brazil
 Chile
 Colombia
 Ecuador
 Falkland Islands
 French Guiana
 Guyana
 Paraguay
 Peru
 Suriname
 Uruguay
 Venezuela
 South America, nec

Central America

Belize
 Costa Rica
 El Salvador
 Guatemala
 Honduras
 Mexico
 Nicaragua
 Panama

Caribbean

Anguilla
 Antigua and Barbuda
 Aruba
 Bahamas
 Barbados
 Cayman Islands
 Cuba
 Dominica
 Dominican Republic
 Grenada
 Guadeloupe
 Haiti
 Jamaica
 Martinique
 Montserrat
 Netherlands Antilles
 Puerto Rico
 St Kitts and Nevis
 St Lucia
 St Vincent and the Grenadines
 Trinidad and Tobago
 Turks and Caicos Islands
 Virgin Islands, British
 Virgin Islands, United States

SUB-SAHARAN AFRICA**Central and West Africa**

Benin
 Burkina Faso
 Cameroon
 Cape Verde
 Central African Republic
 Chad
 Congo
 Congo, Democratic Republic of
 Côte d'Ivoire
 Equatorial Guinea
 Gabon
 Gambia
 Ghana
 Guinea
 Guinea-Bissau
 Liberia
 Mali
 Mauritania
 Niger
 Nigeria
 Sao Tomé and Príncipe

Senegal
 Sierra Leone
 Togo

Southern and East Africa

Angola
 Botswana
 Burundi
 Comoros
 Djibouti
 Eritrea
 Ethiopia
 Kenya
 Lesotho
 Madagascar
 Malawi
 Mauritius
 Mayotte
 Mozambique
 Namibia
 Réunion
 Rwanda
 St Helena
 Seychelles
 Somalia
 South Africa
 Swaziland
 Tanzania
 Uganda
 Zambia
 Zimbabwe
 Southern and East Africa, nec

Statistical publications

The Department of Immigration and Citizenship produces a number of regular and special publications providing statistics which are relevant to the formulation and assessment of immigration policies and procedures. Some of the publications referred to below, are available from the Department's website: <http://www.immi.gov.au/media/statistics> along with other migration information.

Migrant data can also be obtained from the Australian Bureau of Statistics (ABS). See the ABS website <http://www.abs.gov.au> for more details.

Regular publications

- Immigration Update* (produced biannually)
- Settler Arrivals* (produced annually)
- Emigration* (re-commenced 2005-2006, produced annually)
- Population Flows — Immigration Aspects* (produced annually)