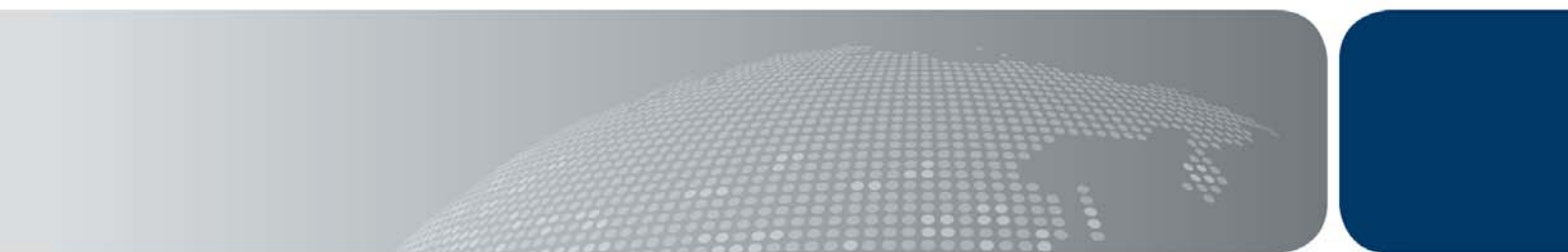




Australian Government
Department of Immigration
and Citizenship

Settler arrivals

2010-2011



Settler arrivals
2000-01 to 2010-11
Australia
States and territories

© Commonwealth of Australia 2011

ISSN 1034-5051

This work is copyright. You may download, display, print and reproduce this material in unaltered form only (retaining this notice) for your personal, non-commercial use or use within your organisation. Apart from any use as permitted under the *Copyright Act 1968*, all other rights are reserved.

Requests for further authorisation should be directed to the:
Commonwealth Copyright Administration,
Copyright Law Branch,
Attorney-General's Department
Robert Garran Offices
National Circuit
Barton ACT 2600

Fax: 02 6250 5989
Email: commonwealth.copyright@ag.gov.au.

Prepared by Principal Adviser Migration Strategies.

Published by the Department of Immigration and Citizenship
6 Chan Street Belconnen ACT 2617

Foreword

Settler arrivals statistics presented in this publication are derived from passenger card and other data relating to overseas arrivals, where arriving persons have indicated an intention or legal entitlement to permanently settle in Australia. It is not a measure of those who actually add to Australia's population through migration. To obtain a complete picture on migration to Australia, consideration needs also to be given to those who change intention or legal entitlement from temporary to permanent stay, and actual behaviour rather than stated intention. Specific information on Net Overseas Migration can be found in DIAC Fact Sheet 15, available at <<http://www.immi.gov.au/media/fact-sheets/15population.htm>> or from the Australian Bureau of Statistics (ABS).

Settler arrivals provides useful information on trends relating to one segment of the many people who travel to and from Australia.

For more detail on definitions of data and concepts used, see 'Explanatory notes' at the back of this publication. For actual changes in Australia's population, see the official population estimates produced by the ABS.

Table of contents

Contents

List of graphs

Figure 1	States and territories of intended residence 1991-92 to 2010-11 as a percentage of total settler arrivals	2
----------	---	---

Tables

Main features 1

Australia 4

Table 1.1	States and territories of intended residence, settler arrivals 1985-86 to 2010-11	4
Table 1.2	Settler arrivals by birthplace, 2000-01 to 2010-11	5
Table 1.3	Settler arrivals by state or territory of intended residence and sex, 1997-98 to 2010-11	12
Table 1.4	Permanent movements by age, 1997-98 to 2010-11	13
Table 1.5	Settler arrivals by eligibility category, 2000-01 to 2010-11	14
Table 1.6	Settler arrivals by eligibility category and state or territory of intended residence, 1998-99 to 2010-11	15

New South Wales 17

Table 2.1	Settler arrivals by birthplace, 2000-01 to 2010-11	17
-----------	--	----

Victoria 24

Table 3.1	Settler arrivals by birthplace, 2000-01 to 2010-11	24
-----------	--	----

Queensland 31

Table 4.1	Settler arrivals by birthplace, 2000-01 to 2010-11	31
-----------	--	----

South Australia 38

Table 5.1	Settler arrivals by birthplace, 2000-01 to 2010-11	38
-----------	--	----

Western Australia 44

Table 6.1	Settler arrivals by birthplace, 2000-01 to 2010-11	44
-----------	--	----

Tasmania 50

Table 7.1	Settler arrivals by birthplace, 2000-01 to 2010-11	50
-----------	--	----

Northern Territory	54
Table 8.1 Settler arrivals by birthplace, 2000-01 to 2010-11	54
Australian Capital Territory	58
Table 9.1 Settler arrivals by birthplace, 2000-01 to 2010-11	58
Explanatory notes	63
Country classification	66
Statistical publications	69

Main features

In total

- ❑ There were 127 458 settler arrivals for 2010-11 a decrease of 9.4 per cent from the previous year. The number of settler arrivals are now near the level they were in 2005-06.
- ❑ The number of settler arrivals fluctuates over time (Table 1.1), although there had been a series of increases from 2001-02 until 2008-09.

By State

- ❑ All states and territories recorded decreases except Queensland which recorded an increase from 24 946 to 25 827 (3.5 per cent), whereas South Australia had the largest percentage decrease from 11 377 to 7204, a decrease of 36.7 per cent.
- ❑ As a percentage of total settler arrivals Queensland had a significant increase from 17.7 to 20.3 per cent. All the other states and territories maintained their relative share except for South Australia which recorded a decrease from 8.1 to 5.7 per cent of total settler arrivals.

By major source countries of birth

- ❑ New Zealand increased by 42.2 per cent. The other major countries of birth with settler arrivals over 10 000 recorded decreases, India -32.4 per cent, the United Kingdom -29.6 per cent and China -12.2 per cent

By gender

- ❑ The gender split for settler arrivals since 1996-97 has seen slightly more females than males in total.

By visa group

- ❑ As a percentage of total settler arrivals and including both primary and secondary applicants, the Skill Stream has dropped from a high of 46.2 per cent in 2003-04 to 31.8 per cent in 2010-11.
- ❑ Family has risen from a low of 21.6 per cent in 1999-00 to 32.2 per cent in 2010-11.
- ❑ Humanitarian as a percentage of total settler arrivals has fluctuated from 10.7 per cent in 2004-05 down to 7.2 per cent in 2010-11.
- ❑ However, migration eligibility categories are constantly changing so care must be taken when doing any long-term comparisons.
- ❑ Although New Zealand citizen migration is not under the control of the Australian or New Zealand governments it does constitute a large percentage of total settler arrivals from a high of 39.4 per cent in 2000-01 down to 27.1 in 2010-11.

Additional information can also be found in the *Immigration Update 2010-11* publication.

Figure 1 States and territories of intended residence 1991-92 to 2010-11 as a percentage of total settler arrivals (continued overleaf)

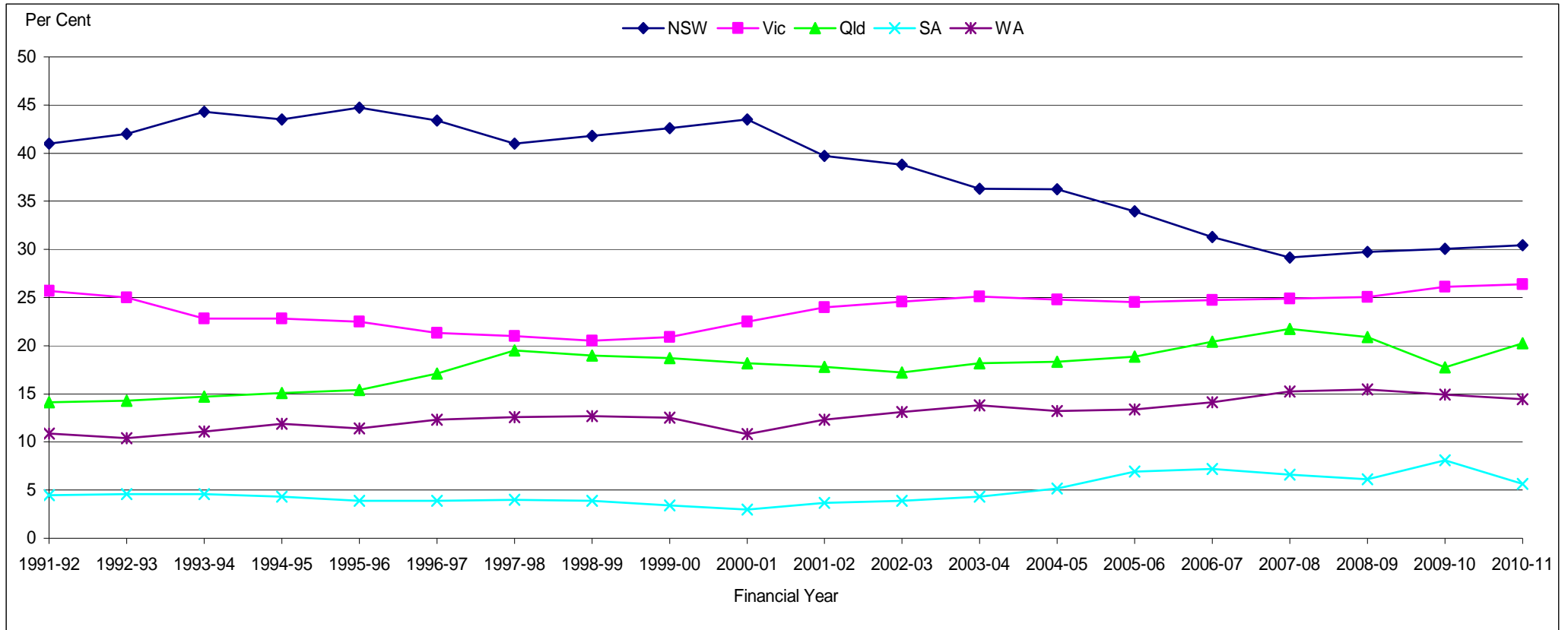
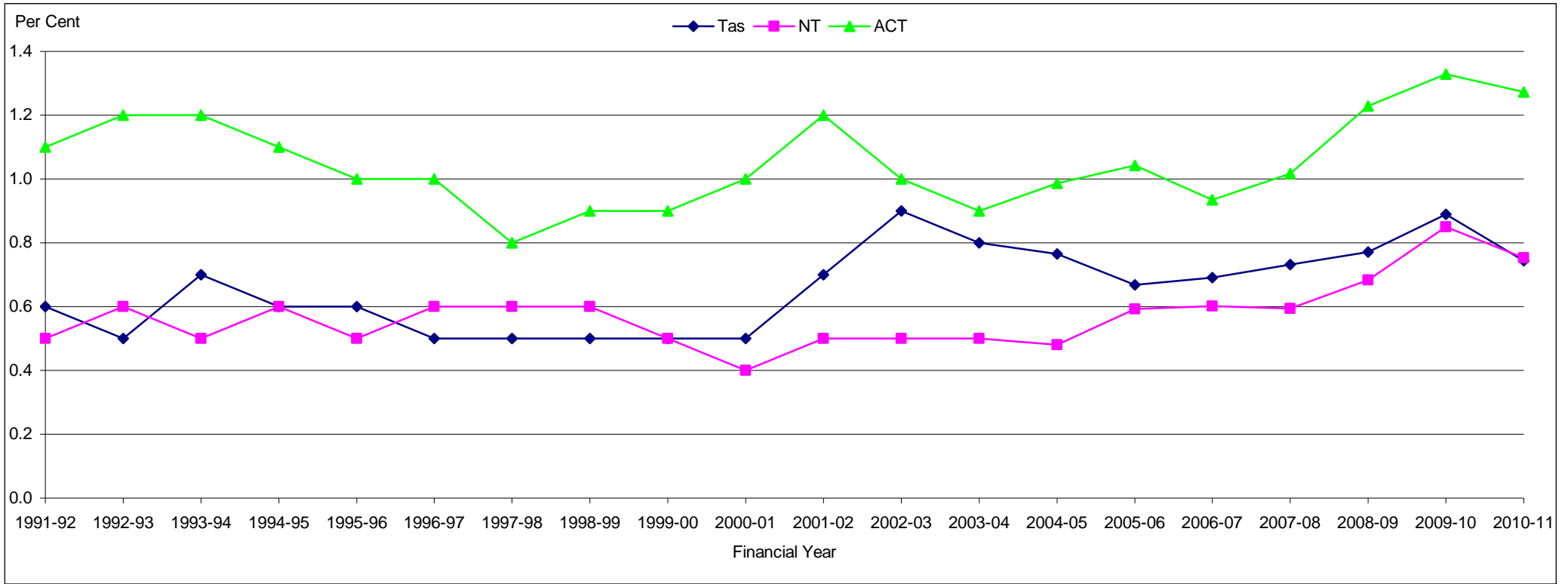


Figure 1 (continued) States and territories of intended residence 1991-92 to 2010-11 as a percentage of total settler arrivals



Australia

Table 1.1 States and territories of intended residence, settler arrivals 1985-86 to 2010-11

Financial Year	NSW	%	Vic	%	Qld.	%	SA	%	WA	%	Tas	%	NT	%	ACT	%	Total (a)
1985-86	36 760	39.8	23 848	25.8	11 772	12.7	4 923	5.3	11 572	12.5	948	1.0	1 045	1.1	1 358	1.5	92 410
1986-87	45 569	40.2	29 007	25.6	14 042	12.4	5 701	5.0	15 710	13.9	938	0.8	941	0.8	1 401	1.2	113 309
1987-88	57 286	39.9	35 050	24.4	20 988	14.6	6 278	4.4	20 054	14.0	1 015	0.7	1 053	0.7	1 766	1.2	143 490
1988-89	56 065	38.6	35 024	24.1	21 780	15.0	6 867	4.7	22 278	15.3	846	0.6	927	0.6	1 523	1.0	145 316
1989-90	47 153	38.9	31 788	26.2	15 922	13.1	5 898	4.9	17 512	14.4	864	0.7	733	0.6	1 343	1.1	121 227
1990-91	47 569	39.1	32 071	26.4	16 243	13.3	5 963	4.9	15 819	13.0	709	0.6	825	0.7	1 488	1.2	121 688
1991-92	44 066	41.0	27 547	25.7	15 189	14.1	4 796	4.5	11 712	10.9	617	0.6	569	0.5	1 178	1.1	107 391
1992-93	32 093	42.0	19 053	25.0	10 939	14.3	3 534	4.6	7 928	10.4	401	0.5	426	0.6	949	1.2	76 330
1993-94	30 886	44.3	15 918	22.8	10 267	14.7	3 201	4.6	7 743	11.1	465	0.7	372	0.5	807	1.2	69 768
1994-95	38 056	43.5	19 968	22.8	13 179	15.1	3 782	4.3	10 379	11.9	552	0.6	496	0.6	1 001	1.1	87 428
1995-96	44 327	44.7	22 269	22.5	15 284	15.4	3 842	3.9	11 318	11.4	556	0.6	494	0.5	1 021	1.0	99 139
1996-97	37 212	43.4	18 266	21.3	14 640	17.1	3 336	3.9	10 518	12.3	431	0.5	490	0.6	833	1.0	85 752
1997-98	31 694	41.0	16 233	21.0	15 095	19.5	3 069	4.0	9 741	12.6	369	0.5	435	0.6	657	0.8	77 327
1998-99	35 141	41.8	17 291	20.5	16 028	19.0	3 320	3.9	10 672	12.7	442	0.5	474	0.6	763	0.9	84 143
1999-00	39 311	42.6	19 319	20.9	17 286	18.7	3 105	3.4	11 512	12.5	444	0.5	471	0.5	809	0.9	92 272
2000-01	46 745	43.5	24 159	22.5	19 535	18.2	3 183	3.0	11 565	10.8	564	0.5	472	0.4	1 115	1.0	107 366
2001-02	35 301	39.7	21 374	24.0	15 825	17.8	3 316	3.7	10 954	12.3	589	0.7	459	0.5	1 075	1.2	88 900
2002-03	36 431	38.8	23 109	24.6	16 182	17.2	3 657	3.9	12 279	13.1	811	0.9	483	0.5	957	1.0	93 914
2003-04	40 561	36.3	28 028	25.1	20 284	18.2	4 773	4.3	15 411	13.8	884	0.8	596	0.5	1 050	0.9	111 590
2004-05	44 746	36.3	30 581	24.8	22 660	18.4	6 364	5.2	16 318	13.2	944	0.8	592	0.5	1 217	1.0	123 424
2005-06	44 661	33.9	32 297	24.5	24 862	18.9	9 099	6.9	17 638	13.4	879	0.7	780	0.6	1 372	1.0	131 593
2006-07	43 835	31.3	34 698	24.8	28 640	20.4	10 061	7.2	19 783	14.1	968	0.7	843	0.6	1 311	0.9	140 148
2007-08	43 520	29.1	37 213	24.9	32 496	21.8	9 896	6.6	22 738	15.2	1 092	0.7	888	0.6	1 518	1.0	149 365
2008-09	47 030	29.8	39 559	25.0	33 029	20.9	9 695	6.1	24 463	15.5	1 219	0.8	1 079	0.7	1 942	1.2	158 021
2009-10	42 267	30.1	36 725	26.1	24 946	17.7	11 377	8.1	20 976	14.9	1 250	0.9	1 196	0.9	1 869	1.3	140 610
2010-11	38 816	30.5	33 632	26.4	25 827	20.3	7 204	5.7	18 441	14.5	949	0.7	960	0.8	1 623	1.3	127 458

(a) Includes 'not stated' and Other Territories.

Australia

Table 1.2 Settler arrivals by birthplace, 2000-01 to 2010-11

Birthplace	2000-01	2001-02	2002-03	2003-04	2004-05	2005-06	2006-07	2007-08	2008-09	2009-10	2010-11
Oceania											
<i>Australia & External Territories (a)</i>	570	444	407	460	573	610	592	806	833	733	849
<i>New Zealand</i>	25 165	15 663	12 368	14 418	17 345	19 033	23 906	27 601	25 578	18 119	25 772
<i>Melanesia</i>											
New Caledonia	8	8	5	4	12	6	5	5	12	14	7
Papua New Guinea	140	124	216	192	182	215	226	256	240	169	235
Solomon Islands	27	32	18	29	43	16	35	24	25	26	26
Vanuatu	19	18	23	14	12	20	23	23	15	31	28
Total	194	182	262	239	249	257	289	308	292	240	296
<i>Micronesia</i>											
Guam	2	-	5	7	3	1	1	-	1	-	-
Kiribati	4	12	6	4	6	3	15	4	17	18	4
Marshall Islands	-	-	-	-	-	2	-	-	-	-	1
Micronesia Federated States	-	1	3	-	2	-	1	2	-	1	-
Nauru	7	13	8	6	9	6	7	2	7	7	-
Northern Mariana Islands	-	-	-	1	-	-	-	2	-	2	-
Palau	-	-	-	-	-	-	-	-	-	3	6
Total	13	26	22	18	20	12	24	10	25	31	11
<i>Polynesia (excluding Hawaii)</i>											
Cook Islands	236	124	82	108	91	98	114	244	333	158	267
Fiji	2 150	1 608	1 609	1 603	1 736	1 830	1 492	1 794	1 824	1 434	1 395
French Polynesia	6	2	6	3	8	5	2	5	15	1	8
Niue	57	28	21	32	35	25	27	78	47	47	71
Samoa	1 295	756	506	665	747	594	415	637	814	627	717
Samoa American	10	12	4	10	11	9	3	18	7	-	1
Tokelau	30	32	15	28	26	31	14	30	26	23	46
Tonga	402	272	211	232	284	269	181	166	208	191	181
Tuvalu	6	3	4	3	6	4	2	-	8	10	-
Polynesia (excl Hawaii) nec	-	-	-	-	-	-	-	-	-	5	-
Total	4 192	2 837	2 458	2 684	2 944	2 865	2 250	2 972	3 282	2 496	2 686
Total Oceania	30 134	19 152	15 517	17 819	21 131	22 777	27 061	31 697	30 010	21 619	29 614
Europe											
<i>United Kingdom & Ireland</i>											
UK	9 037	8 749	12 508	18 272	18 220	23 290	23 223	23 236	21 545	15 555	10 944
Ireland	709	504	649	942	896	1 061	1 163	1 267	1 530	1 498	1 319
Total	9 746	9 253	13 157	19 214	19 116	24 351	24 386	24 503	23 075	17 053	12 263
<i>Western Europe</i>											
Austria	75	84	96	103	89	81	109	79	104	89	42
Belgium	66	68	91	67	77	68	69	97	67	83	80
France	202	253	313	351	323	300	312	305	329	341	324
Germany	801	697	759	806	844	953	963	996	936	936	652
Liechtenstein	-	2	-	1	-	-	1	-	-	-	-
Luxembourg	1	-	1	1	4	4	4	2	-	5	16
Monaco	-	1	2	-	-	2	-	-	1	-	1
Netherlands	407	427	397	432	471	523	548	577	510	393	313
Switzerland	181	180	216	183	198	232	155	234	181	152	169
Total	1 733	1 712	1 875	1 944	2 006	2 163	2 161	2 290	2 128	1 999	1 597

(a) The Australia component consists of persons born in Australia who have settled overseas and returned.

Australia

Table 1.2 (continued) Settler arrivals by birthplace, 2000-01 to 2010-11

Birthplace	2000-01	2001-02	2002-03	2003-04	2004-05	2005-06	2006-07	2007-08	2008-09	2009-10	2010-11
<i>Northern Europe</i>											
Denmark	104	114	88	97	103	93	90	85	77	81	60
Faroe Islands	-	-	1	-	-	-	1	-	-	-	-
Finland	51	42	34	52	54	67	52	65	53	64	45
Greenland	1	-	-	-	-	1	-	-	-	-	-
Iceland	4	2	1	4	3	-	12	7	4	5	2
Norway	30	25	56	55	53	69	61	48	53	62	50
Sweden	110	138	148	201	163	151	133	174	180	155	128
Total	300	321	328	409	376	381	349	379	367	367	285
<i>Southern Europe</i>											
Andorra	-	-	-	-	-	-	-	2	-	-	1
Gibraltar	1	1	2	3	7	4	6	10	3	10	9
Italy	181	267	139	186	195	187	204	180	205	259	196
Malta	40	28	54	58	92	38	100	99	66	36	57
Portugal	35	34	41	44	62	40	44	60	59	72	48
Spain	72	65	92	88	95	91	134	100	126	112	139
Total	329	395	328	379	451	360	488	451	459	489	450
<i>South Eastern Europe</i>											
Albania	64	77	280	124	115	130	94	93	119	96	58
Bosnia & Herzegovina (b)	759	403	160	126	108	115	110	111	75	98	74
Bulgaria	143	106	82	108	116	83	95	105	82	78	70
Croatia (b)	1 296	616	321	137	67	89	99	94	108	72	73
Cyprus	62	44	30	63	41	43	38	32	35	31	20
Fmr Yugo Rep of											
Macedonia (b)	475	389	393	373	310	357	312	356	306	256	230
Greece	92	108	106	99	85	112	81	84	102	87	138
Moldava	-	10	8	31	12	22	15	30	11	15	17
Montenegro (b)	-	-	-	-	-	-	3	12	11	7	8
Romania	289	271	300	289	286	300	310	272	249	236	152
Serbia (b)	-	-	-	-	-	-	34	169	171	196	169
Fmr Serbia & Montenegro (b)	2 343	2 082	1 633	931	671	509	535	334	288	252	185
Slovenia (b)	19	4	6	12	6	21	36	58	31	15	26
Total	5 542	4 110	3 319	2 293	1 817	1 781	1 762	1 750	1 588	1 439	1 220
<i>Eastern Europe</i>											
Belarus (c)	18	9	13	20	46	47	37	20	39	26	24
Czech Republic (d)	13	22	12	13	22	39	52	42	62	32	24
Estonia (c)	10	21	16	13	14	10	14	14	15	21	13
Former Czechoslovakia (d)	113	134	127	126	113	105	103	98	72	66	38
Hungary	56	79	81	108	119	111	136	142	165	159	126
Latvia (c)	21	18	29	27	30	29	20	23	29	34	21
Lithuania (c)	16	25	18	30	38	22	21	27	27	30	30
Poland	256	232	271	334	354	338	278	329	323	295	262
Russian Federation (c)	88	87	93	222	396	444	338	463	731	458	399
Slovakia (d)	10	12	15	30	18	24	28	31	28	42	33
Ukraine	87	100	107	203	200	202	205	180	186	180	151
Eastern Europe nfd	-	-	-	1	-	-	-	-	-	-	-
Total	688	739	782	1 127	1 350	1 371	1 232	1 369	1 677	1 343	1 121
Total Europe	18 338	16 530	19 789	25 366	25 116	30 407	30 378	30 742	29 294	22 690	16 936

(b) As reliable data are not available for component countries prior to 1995-96, care should be taken when interpreting the data. Serbia and Montenegro was previously called the Federal Republic of Yugoslavia and since 1998-99 contains the Former Yugoslavia nfd. See page 64.

(c) As reliable data are not available for component countries prior to 1995-96, care should be taken when interpreting the data. See page 64.

(d) As reliable data are not available for component countries prior to 1995-96, care should be taken when interpreting the data. See page 64.

Australia

Table 1.2 (continued) Settler arrivals by birthplace, 2000-01 to 2010-11

Birthplace	2000-01	2001-02	2002-03	2003-04	2004-05	2005-06	2006-07	2007-08	2008-09	2009-10	2010-11
North Africa & The Middle East											
<i>North Africa</i>											
Algeria	59	34	36	29	28	27	16	24	19	24	26
Egypt	423	354	551	736	857	812	756	627	782	856	750
Libya	18	9	19	24	18	20	19	24	19	36	19
Morocco	18	24	41	39	41	45	49	53	47	42	69
Sudan	1 145	1 078	2 775	4 591	5 654	3 783	2 513	1 018	931	713	682
Tunisia	9	6	22	5	4	9	10	10	5	30	12
North Africa nfd	-	1	-	-	-	-	-	-	-	-	-
Total	1 672	1 506	3 444	5 424	6 602	4 696	3 363	1 756	1 803	1 701	1 558
<i>The Middle East</i>											
Bahrain	13	21	22	14	32	28	34	27	43	19	18
Gaza Strip & West Bank	15	22	4	16	5	5	11	6	7	7	1
Iran	907	600	819	843	966	897	1 077	1 101	2 122	1 837	2 404
Iraq	1 629	1 372	2 819	1 903	1 936	2 425	2 213	2 319	4 130	2 567	2 988
Israel	114	169	253	318	383	322	327	274	271	298	173
Jordan	180	118	156	189	237	201	152	162	233	184	162
Kuwait	107	58	128	95	92	137	120	137	143	126	159
Lebanon	1 498	1 100	1 613	1 293	1 447	1 286	1 390	1 425	1 160	1 009	895
Oman	13	14	16	11	21	29	25	22	35	17	23
Qatar	18	17	7	13	11	14	27	24	23	27	11
Saudi Arabia	54	51	61	54	87	67	88	96	108	158	121
Syria	214	176	227	211	231	239	240	227	288	201	266
Turkey	423	617	729	707	624	526	334	393	451	360	469
United Arab Emirates	50	121	200	161	219	240	243	259	273	257	237
Yemen	18	13	25	38	9	6	22	12	15	3	7
Middle East nfd	17	25	27	31	59	35	24	37	38	31	16
Total	5 270	4 494	7 106	5 897	6 359	6 457	6 327	6 521	9 340	7 101	7 950
Total North Africa & the Middle East	6 942	6 000	10 550	11 321	12 961	11 153	9 690	8 277	11 143	8 802	9 508
Southeast Asia											
Brunei	61	40	53	63	56	49	35	36	40	35	16
Burma (Myanmar)	223	248	188	185	417	690	1 629	2 101	2 181	1 781	1 142
Cambodia	464	480	617	561	630	625	724	710	821	938	810
East Timor (e)	19	18	23	32	30	43	23	34	25	23	26
Indonesia (e)	3 921	4 221	3 026	2 584	1 930	1 853	1 704	1 788	1 686	1 500	1 373
Laos	68	39	41	44	114	66	112	83	78	52	256
Malaysia	2 222	1 939	2 686	3 718	2 936	2 967	2 899	3 522	3 324	3 507	2 737
Philippines	3 123	2 837	3 190	4 111	4 239	4 871	5 561	6 112	5 942	5 958	5 048
Singapore	1 361	1 493	1 751	2 224	3 036	2 685	1 658	1 815	1 454	1 421	1 095
Thailand	697	1 230	1 133	1 065	1 277	1 568	1 989	2 278	2 559	2 353	2 096
Vietnam	1 639	1 919	2 568	2 212	2 203	2 661	3 135	2 685	2 898	3 012	3 339
Southeast Asia nfd	-	-	-	-	-	-	-	-	-	1	-
Total Southeast Asia	13 798	14 464	15 276	16 799	16 868	18 078	19 469	21 164	21 008	20 581	17 938

(e) East Timor previously recorded under Indonesia, care should be taken when interpreting the data.

Australia

Table 1.2 (continued) **Settler arrivals by birthplace, 2000-01 to 2010-11**

Birthplace	2000-01	2001-02	2002-03	2003-04	2004-05	2005-06	2006-07	2007-08	2008-09	2009-10	2010-11
Northeast Asia											
China (f)	8 762	6 708	6 664	8 784	11 095	10 581	12 009	12 959	15 803	16 644	14 611
Hong Kong (g)	1 541	931	1 029	1 125	1 273	1 031	995	873	887	895	1 097
Japan	604	571	607	706	749	755	811	796	772	602	483
Korea	1 344	759	903	1 075	1 788	2 117	2 092	2 574	2 805	2 425	1 979
Macau (g)	28	29	25	26	31	21	18	15	20	24	22
Mongolia	3	3	11	5	15	15	20	19	29	27	22
Taiwan	2 599	1 715	1 109	881	776	752	671	746	661	648	599
Total Northeast Asia	14 881	10 716	10 348	12 602	15 727	15 272	16 616	17 982	20 977	21 265	18 813
Southern Asia											
Bangladesh	950	437	437	581	770	848	908	1 139	1 505	1 715	1 375
Bhutan	2	-	1	-	-	2	1	27	575	560	748
India	6 336	5 091	5 783	8 135	9 414	11 286	13 496	15 338	17 283	15 626	10 566
Maldives	1	8	3	7	10	7	7	23	11	19	2
Nepal	228	166	176	235	302	304	460	607	813	905	919
Pakistan	1 256	831	770	1 099	1 348	1 234	1 446	1 376	1 635	1 635	1 513
Sri Lanka	2 043	2 011	1 845	1 551	2 312	2 361	2 721	3 619	4 078	4 440	3 225
Total Southern Asia	10 816	8 544	9 015	11 608	14 156	16 042	19 039	22 129	25 900	24 900	18 348
Central Asia											
Afghanistan	474	646	964	1 221	1 531	2 547	2 186	1 693	1 560	1 460	1 822
Armenia (d)	3	7	23	15	6	6	11	8	10	16	5
Azerbaijan (d)	2	10	4	9	12	13	8	3	11	10	9
Georgia (d)	10	9	8	5	6	3	10	10	8	16	3
Kazakhstan (d)	25	13	18	41	35	45	39	57	66	49	27
Kyrgyzstan (d)	2	7	10	25	24	23	18	23	15	10	9
Tajikistan (d)	1	2	2	-	2	5	3	1	2	3	3
Turkmenistan (d)	1	1	3	2	2	6	8	2	2	7	1
Uzbekistan (d)	15	17	11	31	35	82	50	47	57	33	30
Total Central Asia	533	712	1 043	1 349	1 653	2 730	2 333	1 844	1 731	1 604	1 909
Northern America											
Bermuda	7	8	8	2	4	5	1	2	6	9	6
Canada	730	586	643	615	679	781	723	715	842	815	736
USA	1 212	1 136	1 324	1 359	1 578	1 655	1 621	1 467	1 406	1 509	1 503
Total Northern America	1 949	1 730	1 975	1 976	2 261	2 441	2 345	2 184	2 254	2 333	2 245

(d) As reliable data are not available for component countries prior to 1995-96, care should be taken when interpreting the data. See page 64.

(f) Excluding SARs and Taiwan.

(g) SAR of China.

Australia

Table 1.2 (continued) Settler arrivals by birthplace, 2000-01 to 2010-11

Birthplace	2000-01	2001-02	2002-03	2003-04	2004-05	2005-06	2006-07	2007-08	2008-09	2009-10	2010-11
South America, Central America & the Caribbean											
<i>South America</i>											
Argentina	79	78	167	337	325	233	134	125	118	184	105
Bolivia	20	14	15	18	11	16	11	22	15	27	20
Brazil	110	154	208	194	334	356	400	435	389	569	365
Chile	132	143	187	183	181	166	147	170	179	164	151
Colombia	118	146	209	183	225	220	232	268	302	436	342
Ecuador	31	23	38	49	45	48	28	42	37	37	23
Falkland Islands	-	1	-	2	1	2	1	1	-	-	-
French Guiana	1	-	-	1	-	-	-	-	-	-	-
Guyana	9	-	5	7	-	10	7	6	6	3	6
Paraguay	5	12	4	4	4	16	3	5	7	11	-
Peru	122	111	171	151	195	296	306	250	250	217	171
Suriname	-	-	7	4	1	2	3	3	3	2	-
Uruguay	21	27	54	57	65	64	31	39	29	17	29
Venezuela	40	37	52	58	120	171	151	258	249	342	199
South America nfd	-	2	-	-	-	-	1	1	1	1	1
Total	688	748	1 117	1 248	1 507	1 600	1 455	1 625	1 585	2 010	1 412
<i>Central America</i>											
Belize	1	-	1	1	-	-	-	1	1	1	8
Costa Rica	2	7	4	-	4	13	4	7	6	8	11
El Salvador	29	27	22	21	31	29	20	47	54	54	67
Guatemala	10	9	2	8	2	6	14	10	12	8	9
Honduras	-	4	3	3	4	5	4	7	4	3	4
Mexico	30	40	68	51	76	148	144	237	212	212	162
Nicaragua	-	3	2	-	1	6	9	7	3	3	9
Panama	3	2	2	4	6	9	2	6	8	6	6
Central America nfd	1	-	-	1	-	-	2	-	-	5	-
Total	76	92	104	89	124	216	199	322	300	300	276
<i>The Caribbean</i>											
Antigua And Barbuda	-	-	-	-	-	2	2	-	1	-	-
Aruba	-	-	-	-	-	-	-	-	1	-	-
Bahamas	3	2	3	6	3	1	2	3	-	4	4
Barbados	8	1	4	3	3	6	5	10	4	10	1
Cayman Islands	2	3	-	2	3	1	5	6	2	5	5
Cuba	14	17	16	20	18	26	21	36	30	31	23
Dominica	-	-	-	2	2	-	-	2	-	-	-
Dominican Republic	4	5	3	5	5	5	4	8	7	3	6
Grenada	-	-	1	1	1	3	-	2	-	-	-
Guadeloupe	-	2	2	-	1	-	-	-	1	-	1
Haiti	-	6	1	1	-	3	-	1	1	3	-
Jamaica	22	10	7	13	23	21	21	17	30	19	9
Martinique	-	-	-	-	-	-	-	-	-	1	1
Montserrat	-	-	-	-	-	2	-	2	-	-	1
Netherlands Antilles	1	5	1	-	1	4	1	1	-	3	1
Puerto Rico	1	2	2	1	1	1	3	3	1	4	1

Australia

Table 1.2 (continued) **Settler arrivals by birthplace, 2000-01 to 2010-11**

Birthplace	2000-01	2001-02	2002-03	2003-04	2004-05	2005-06	2006-07	2007-08	2008-09	2009-10	2010-11
<i>The Caribbean (continued)</i>											
St Kitts And Nevis	-	-	1	-	-	-	-	2	1	-	2
St Lucia	-	-	-	-	2	3	3	1	-	1	4
St Vincent And The Grenadine	-	-	-	-	-	1	-	-	2	1	1
Trinidad And Tobago	14	7	5	26	24	14	21	14	13	17	6
Turks And Caicos Islands	-	-	-	-	-	1	-	-	-	-	-
Virgin Islands British	-	-	-	-	1	-	-	-	-	1	-
Virgin Islands United States	-	-	-	1	-	1	-	-	-	-	-
Caribbean nfd	-	-	-	-	1	-	2	-	-	-	-
Total	69	60	46	81	89	95	90	108	94	103	66
Total South America, Central America & The Caribbean	833	900	1 267	1 418	1 720	1 911	1 744	2 055	1 979	2 413	1 754
Sub-Saharan Africa											
<i>Central & West Africa</i>											
Benin	-	-	-	-	2	1	11	23	5	4	5
Burkina Faso	-	3	1	1	-	-	1	2	1	1	1
Cameroon	-	4	9	4	4	5	11	29	5	29	38
Cape Verde	-	-	-	-	-	1	1	2	-	-	1
Central African Republic	-	-	-	-	1	-	1	13	-	1	2
Chad	-	-	-	-	1	2	4	4	-	2	6
Congo	20	8	23	137	276	91	103	32	68	83	70
Congo Democratic Republic	4	8	8	26	21	155	569	474	271	563	413
Cote D'Ivoire	2	-	5	2	111	55	83	77	75	86	28
Gabon	1	1	-	-	2	1	-	1	1	-	1
Gambia	-	1	3	-	2	4	6	3	-	3	4
Ghana	84	76	95	137	143	217	245	180	145	223	190
Guinea	4	8	25	16	152	101	147	87	58	163	60
Guinea-Bissau	-	3	1	-	-	1	-	-	-	-	1
Liberia	18	113	145	114	851	564	539	255	287	310	84
Mali	-	-	1	1	1	1	-	1	-	5	1
Mauritania	-	-	-	-	1	3	3	42	-	-	-
Niger	7	6	1	1	2	9	6	3	7	-	2
Nigeria	86	126	89	102	111	160	187	185	258	304	212
Senegal	2	11	6	4	7	12	6	54	7	9	8
Sierra Leone	127	328	174	132	642	532	519	276	225	421	141
Togo	3	1	1	2	8	3	49	99	46	60	42
Total	358	697	587	679	2 338	1 918	2 491	1 842	1 459	2 267	1 310
<i>Southern & East Africa</i>											
Angola	2	10	3	1	3	3	12	4	12	4	2
Botswana	19	16	26	27	29	24	36	21	44	41	33
Burundi	5	5	8	51	259	442	440	228	195	136	66
Comoros	3	-	1	-	-	-	3	-	-	1	1
Djibouti	7	6	6	2	9	1	6	3	3	7	15
Eritrea (h)	137	133	109	148	125	168	138	128	171	222	163
Ethiopia (h)	397	396	570	718	586	429	575	466	729	736	667
Kenya	256	413	574	617	806	648	701	459	603	489	385
Lesotho	2	7	3	1	8	2	4	-	3	5	2
Madagascar	4	5	8	3	1	4	6	5	4	3	14
Malawi	14	32	19	32	40	17	35	39	28	29	50

(h) As reliable data are not available for component countries prior to 1995-96, care should be taken when interpreting the data. See page 64.

Australia

Table 1.2 (continued) **Settler arrivals by birthplace, 2000-01 to 2010-11**

Birthplace	2000-01	2001-02	2002-03	2003-04	2004-05	2005-06	2006-07	2007-08	2008-09	2009-10	2010-11
<i>Southern & East Africa</i> (continued)											
Mauritius	138	153	170	238	227	260	308	388	535	289	214
Mozambique	14	18	21	20	15	8	13	18	25	30	23
Namibia	37	39	48	23	53	39	36	28	56	54	45
Reunion	-	2	-	2	1	3	1	1	5	2	2
Rwanda	1	3	14	44	47	68	93	54	69	132	79
St Helena	-	-	1	-	1	1	-	-	-	1	1
Seychelles	1	32	20	36	25	27	36	18	32	25	17
Somalia	319	359	203	221	246	264	296	156	388	567	405
South Africa	5 754	5 714	4 603	5 849	4 594	3 953	3 996	5 166	7 201	7 153	4 752
Swaziland	8	6	6	11	3	10	6	4	13	6	2
Tanzania	13	26	24	55	176	405	344	291	177	123	134
Uganda	22	48	71	98	185	161	277	155	122	179	144
Zambia	84	123	77	129	98	93	127	109	116	137	162
Zimbabwe	720	1 068	1 197	1 620	1 258	1 104	935	1 019	1 034	927	783
Southern & East Africa nfd	1	-	1	1	-	-	-	1	1	-	-
Total	7 958	8 614	7 783	9 947	8 795	8 134	8 424	8 761	11 566	11 298	8 161
Total											
Sub-Saharan Africa	8 316	9 311	8 370	10 626	11 133	10 052	10 915	10 603	13 025	13 565	9 471
Supplementary codes (i)											
Fmr USSR	788	815	740	660	687	699	505	556	671	811	904
Total	788	815	740	660	687	699	505	556	671	811	904
Not stated	38	26	24	46	11	31	53	132	29	27	18
Total all countries	107 366	88 900	93 914	111 590	123 424	131 593	140 148	149 365	158 021	140 610	127 458

(i) Supplementary codes which cannot be classified to any major region in the Standard Australian Classification of Countries (SACC). This may lead to under reporting of their component countries in the rest of the table, care should be taken when interpreting the data.

Australia

Table 1.3 Settler arrivals by state or territory of intended residence and sex, 1997-98 to 2010-11

Financial Year	State or Territory of intended residence (a)								
	New South Wales	Victoria	Queensland	South Australia	Western Australia	Tasmania	Northern Territory	Australian Capital Territory	Australia (b)
Males									
1997-98	15 145	7 623	7 380	1 498	4 922	181	208	305	37 278
1998-99	16 961	8 113	7 800	1 598	5 310	228	220	339	40 573
1999-00	19 309	9 431	8 502	1 504	5 734	214	225	394	45 322
2000-01	23 351	11 953	9 743	1 599	5 699	275	217	536	53 386
2001-02	16 994	10 506	7 553	1 630	5 323	286	183	515	42 993
2002-03	17 388	10 873	7 707	1 759	5 998	395	206	421	44 750
2003-04	19 521	13 527	9 741	2 362	7 463	405	259	509	53 787
2004-05	21 315	14 770	10 940	3 188	7 989	454	277	561	59 495
2005-06	21 242	15 334	11 890	4 443	8 570	425	338	607	62 852
2006-07	20 471	16 305	13 757	4 896	9 714	453	357	554	66 509
2007-08	20 650	17 620	15 805	4 791	11 266	503	369	670	71 675
2008-09	21 899	18 585	15 840	4 598	11 893	579	483	846	74 725
2009-10	19 507	17 073	11 653	5 496	9 959	582	531	864	65 667
2010-11	17 641	15 255	12 235	3 331	8 777	454	421	723	58 838
Females									
1997-98	16 549	8 610	7 715	1 571	4 819	188	227	352	40 049
1998-99	18 180	9 178	8 228	1 722	5 362	214	254	424	43 570
1999-00	20 002	9 888	8 784	1 601	5 778	230	246	415	46 950
2000-01	23 394	12 206	9 792	1 584	5 866	289	255	579	53 980
2001-02	18 307	10 868	8 272	1 686	5 631	303	276	560	45 907
2002-03	19 043	12 236	8 475	1 898	6 281	416	277	536	49 164
2003-04	21 040	14 501	10 543	2 411	7 948	479	337	541	57 803
2004-05	23 431	15 811	11 720	3 176	8 329	490	315	656	63 929
2005-06	23 419	16 963	12 972	4 656	9 068	454	442	765	68 741
2006-07	23 364	18 393	14 883	5 165	10 069	515	486	757	73 639
2007-08	22 870	19 593	16 691	5 105	11 472	589	519	848	77 690
2008-09	25 131	20 974	17 189	5 097	12 570	640	596	1 096	83 296
2009-10	22 760	19 652	13 293	5 881	11 017	668	665	1 005	74 943
2010-11	21 175	18 377	13 592	3 873	9 664	495	539	900	68 620
Persons									
1997-98	31 694	16 233	15 095	3 069	9 741	369	435	657	77 327
1998-99	35 141	17 291	16 028	3 320	10 672	442	474	763	84 143
1999-00	39 311	19 319	17 286	3 105	11 512	444	471	809	92 272
2000-01	46 745	24 159	19 535	3 183	11 565	564	472	1 115	107 366
2001-02	35 301	21 374	15 825	3 316	10 954	589	459	1 075	88 900
2002-03	36 431	23 109	16 182	3 657	12 279	811	483	957	93 914
2003-04	40 561	28 028	20 284	4 773	15 411	884	596	1 050	111 590
2004-05	44 746	30 581	22 660	6 364	16 318	944	592	1 217	123 424
2005-06	44 661	32 297	24 862	9 099	17 638	879	780	1 372	131 593
2006-07	43 835	34 698	28 640	10 061	19 783	968	843	1 311	140 148
2007-08	43 520	37 213	32 496	9 896	22 738	1 092	888	1 518	149 365
2008-09	47 030	39 559	33 029	9 695	24 463	1 219	1 079	1 942	158 021
2009-10	42 267	36 725	24 946	11 377	20 976	1 250	1 196	1 869	140 610
2010-11	38 816	33 632	25 827	7 204	18 441	949	960	1 623	127 458

(a) Based on stated intention at time of arrival only. There can be no guarantee that the settler actually settled in this State/Territory.

(b) Includes 'not stated'. From 1994-95 also includes Other Territories which comprise Christmas Island, Cocos (Keeling) Islands and Jervis Bay. Previously published as Table 2.2 in Consolidated Statistics (ceased publication 2000).

Australia

Table 1.4 Permanent movements by age, 1997-98 to 2010-11

Financial Year	Age group (years)								Total
	0-4	5-14	15-24	25-34	35-44	45-54	55-64	65+	
Settler arrivals									
1997-98	8 183	12 322	12 222	22 141	12 891	5 202	2 480	1 886	77 327
1998-99	7 899	12 689	13 494	24 891	14 455	5 811	2 821	2 083	84 143
1999-00	8 660	14 264	14 860	26 764	16 975	6 553	2 321	1 875	92 272
2000-01	10 066	16 513	17 792	30 499	19 926	8 006	2 588	1 976	107 366
2001-02	7 883	13 435	15 582	26 433	15 934	6 273	1 930	1 430	88 900
2002-03	8 468	14 502	16 093	28 572	16 774	6 402	1 849	1 254	93 914
2003-04	10 574	17 864	16 746	33 539	20 823	7 251	2 894	1 899	111 590
2004-05	12 007	19 497	18 525	36 512	22 303	7 862	3 931	2 787	123 424
2005-06	12 785	21 186	19 987	38 513	24 965	8 218	3 601	2 338	131 593
2006-07	13 678	22 691	22 140	39 911	26 519	9 230	3 548	2 431	140 148
2007-08	14 506	23 373	23 423	42 641	28 409	10 143	4 280	2 590	149 365
2008-09	15 428	24 013	24 927	43 905	29 197	11 627	5 362	3 562	158 021
2009-10	13 807	19 560	21 604	40 939	25 232	10 323	5 491	3 654	140 610
2010-11	12 763	16 805	21 716	35 786	20 706	10 113	6 282	3 287	127 458
Australia ^(a) born departures									
1997-98	2 273	1 911	1 267	3 944	2 091	951	242	110	12 789
1998-99	1 975	1 924	1 660	5 720	3 377	1 838	557	213	17 264
1999-00	2 246	2 319	1 753	6 752	4 061	2 187	668	279	20 265
2000-01	2 387	2 589	1 978	7 909	4 745	2 471	798	240	23 117
2001-02	2 390	2 673	1 897	8 233	5 147	2 649	894	287	24 170
2002-03	2 405	2 901	2 023	8 497	5 658	2 860	1 005	263	25 612
2003-04	2 917	3 270	2 327	9 355	6 266	3 387	1 253	365	29 140
2004-05	3 108	3 387	2 394	10 242	6 647	3 527	1 362	360	31 027
2005-06	3 183	3 646	2 776	11 045	7 639	3 952	1 658	385	34 284
2006-07	3 368	3 802	2 846	12 044	8 486	4 229	1 685	422	36 882
2007-08	3 608	3 807	2 985	12 455	9 302	4 582	1 932	473	39 144
2008-09	3 676	3 959	2 956	12 793	10 089	5 058	2 180	538	41 249
2009-10	3 715	4 037	2 988	12 797	10 750	5 318	2 326	639	42 570
2010-11	4 009	4 268	3 094	12 883	11 035	5 526	2 562	668	44 045
Overseas born departures									
1997-98	783	1 695	2 143	5 076	4 380	2 448	1 243	1 428	19 196
1998-99	911	1 565	1 731	4 264	4 297	2 723	1 243	1 183	17 917
1999-00	1 041	1 800	1 997	4 617	5 265	3 309	1 442	1 342	20 813
2000-01	1 136	1 861	2 359	5 349	5 941	3 784	1 653	1 321	23 404
2001-02	1 167	1 958	2 456	5 680	5 932	3 879	1 678	1 321	24 071
2002-03	1 278	2 093	2 487	5 746	5 894	4 085	1 839	1 429	24 851
2003-04	1 379	2 351	2 787	6 814	7 126	5 329	2 401	1 751	29 938
2004-05	1 467	2 411	3 034	7 318	7 412	5 501	2 639	1 797	31 579
2005-06	1 594	2 746	3 263	7 464	7 788	5 963	2 853	1 898	33 569
2006-07	1 928	2 648	3 392	7 893	7 958	6 094	3 179	2 129	35 221
2007-08	2 096	2 957	3 748	8 517	8 207	6 520	3 457	2 277	37 779
2008-09	2 402	3 109	3 893	8 839	8 391	7 043	3 777	2 315	39 769
2009-10	2 592	3 607	4 196	9 451	9 236	7 605	4 340	2 680	43 707
2010-11	2 738	3 669	3 920	9 639	9 196	7 744	4 574	2 936	44 416

(a) Includes Australian External Territories.

Previously published as Table 2.5 in Consolidated Statistics (ceased publication 2000).

Australia

Table 1.5 Settler arrivals by eligibility category^(a), 2000-01 to 2010-11

Eligibility category	Financial Year											
	2000-01	2001-02	2002-03	2003-04	2004-05	2005-06	2006-07	2007-08	2008-09	2009-10	2010-11	
Family												
- Preferential												
Spouses	13 148	15 977	19 196	18 337	19 350	21 231	22 789	23 149	23 775	23 682	23 092	
Fiancées	3 379	3 841	5 118	5 122	5 675	6 168	6 632	6 538	6 951	7 102	6 313	
Parents	1 068	545	375	2 520	4 865	3 848	3 657	4 118	6 477	6 959	7 866	
Dependent Child (b)	1 138	1 199	1 305	1 422	1 312	1 442	1 777	2 083	2 194	2 276	2 198	
Child for Adoption	304	332	379	459	410	441	437	381	349	307	292	
Other	1 108	1 450	1 693	1 688	1 570	1 641	1 846	2 135	2 410	2 669	1 323	
Total	20 145	23 344	28 066	29 548	33 182	34 771	37 138	38 404	42 156	42 995	41 084	
Skill												
- Skilled Sponsored (c)	-	-	-	-	-	-	-	88	3 818	11 489	8 480	
- Regional Sponsored (c)	-	-	-	-	-	-	-	16	1 311	5 393	1 920	
- Australian Sponsored (d)	6 743	4 586	4 505	6 285	6 907	7 695	5 039	6 058	4 648	717	62	
- Regional Designated Area Sponsored (d)	830	1 374	2 392	6 954	6 441	7 799	7 480	5 184	2 808	420	345	
- Skilled Independent	21 113	21 583	23 895	29 699	29 540	29 893	32 516	36 826	39 131	28 777	18 504	
- STNI (e)	42	195	480	1 384	2 365	3 714	3 675	3 435	3 075	1 575	59	
- Skilled Independent Regional (f)	-	-	-	-	495	3 026	3 606	4 050	2 044	820	113	
- Employer Sponsored	1 307	1 817	1 748	2 044	2 481	3 092	3 469	4 263	5 186	5 559	5 240	
- Business Skills	5 600	6 409	5 421	5 072	4 813	4 237	4 881	5 370	7 323	6 760	5 767	
- Distinguished Talents	80	72	63	90	91	51	89	114	112	118	57	
Total	35 715	36 036	38 504	51 528	53 133	59 507	60 755	65 404	69 456	61 628	40 547	
Special Eligibility	127	176	178	207	162	104	109	131	124	170	281	
Humanitarian												
- Refugees	4 142	3 525	3 882	3 130	5 278	5 190	6 231	5 696	7 102	6 154	5 785	
- Humanitarian	2 706	3 003	5 686	7 205	7 957	6 923	6 016	3 811	4 543	3 702	3 345	
- Special Assistance	792	204	1	-	-	-	-	-	-	-	-	
Total	7 640	6 732	9 569	10 335	13 235	12 113	12 247	9 507	11 645	9 856	9 130	
Non-program migration												
- New Zealand Citizens	42 257	21 458	16 364	18 718	22 379	23 781	28 307	34 491	33 034	24 447	34 567	
- Other	1 482	1 154	1 233	1 254	1 333	1 317	1 592	1 428	1 606	1 514	1 849	
Total	43 739	22 612	17 597	19 972	23 712	25 098	29 899	35 919	34 640	25 961	36 416	
Total persons	107 366	88 900	93 914	111 590	123 424	131 593	140 148	149 365	158 021	140 610	127 458	

(a) Migration eligibility categories have changed during the period. The allocation of settlers to categories is based on assumptions, to align as closely as possible past policies with current policy. Comparisons between years are therefore indicative only.

(b) From 1 July 2006 the Dependent child extended eligibility category was included in settler arrivals data (361 arrivals in 2006-07).

(c) Implemented 1 September 2007.

(d) Data based on visa subclass at time of arrival.

(e) State Territory Nominated Independent.

(f) Implemented 1 July 2004.

Previously published as Table 2.7 in Consolidated Statistics (ceased publication 2000).

Australia

Table 1.6 Settler arrivals by eligibility category^(a) and state or territory of intended residence, 1998-99 to 2010-11

Financial Year	State or Territory of intended residence (b)								
	New South Wales	Victoria	Queensland	South Australia	Western Australia	Tasmania	Northern Territory	Australian Capital Territory	Australia (c)
Family									
1998-99	10 480	5 439	2 370	845	1 862	100	161	238	21 501
1999-00	9 425	4 937	2 321	825	1 864	150	137	232	19 896
2000-01	9 358	5 071	2 418	830	1 928	146	137	248	20 145
2001-02	10 297	6 165	3 022	994	2 192	155	205	307	23 344
2002-03	12 306	7 756	3 453	1 243	2 525	194	214	370	28 066
2003-04	12 766	7 981	3 893	1 240	2 839	220	228	378	29 548
2004-05	14 658	8 926	4 185	1 339	3 235	210	224	403	33 182
2005-06	15 220	9 203	4 511	1 502	3 372	257	229	473	34 771
2006-07	15 447	10 147	4 969	1 769	3 762	237	290	508	37 138
2007-08	15 911	10 501	5 054	1 762	4 094	283	313	484	38 404
2008-09	16 975	11 546	5 790	1 958	4 562	327	373	621	42 156
2009-10	16 941	12 008	5 775	2 121	4 772	310	422	643	42 995
2010-11	16 012	11 681	5 364	1 990	4 796	247	384	604	41 084
Skill									
1998-99	12 194	4 898	3 643	1 247	5 454	96	155	242	27 931
1999-00	13 796	6 333	3 925	1 243	6 506	107	156	281	32 350
2000-01	15 390	7 996	4 426	967	6 250	98	140	446	35 715
2001-02	14 267	8 582	4 803	1 257	6 431	141	110	445	36 036
2002-03	14 687	9 163	5 204	1 332	7 477	177	122	342	38 504
2003-04	18 040	13 161	7 421	2 278	9 850	189	159	430	51 528
2004-05	18 951	13 496	7 243	3 320	9 166	313	154	490	53 133
2005-06	18 644	15 167	8 101	5 987	10 452	317	274	565	59 507
2006-07	17 094	15 680	8 899	6 518	11 353	371	308	532	60 755
2007-08	17 317	17 394	10 132	6 608	12 542	395	338	677	65 404
2008-09	19 071	18 630	10 810	5 987	13 233	405	405	914	69 456
2009-10	15 893	16 603	7 963	7 741	11 635	372	523	897	61 628
2010-11	11 630	11 414	5 702	3 442	7 274	189	293	603	40 547
Special Eligibility									
1998-99	61	40	37	8	25	3	-	1	175
1999-00	46	31	11	18	23	-	2	-	131
2000-01	27	45	9	15	26	5	-	-	127
2001-02	30	41	38	14	50	1	2	-	176
2002-03	55	45	26	21	29	2	-	-	178
2003-04	62	44	40	11	48	2	-	-	207
2004-05	51	31	28	19	31	-	1	1	162
2005-06	35	23	15	10	19	2	-	-	104
2006-07	31	43	19	4	11	-	-	1	109
2007-08	44	37	28	3	11	4	-	4	131
2008-09	65	22	10	9	13	-	-	5	124
2009-10	77	44	20	8	19	2	-	-	170
2010-11	178	53	25	4	10	3	7	1	281

(a) Migration eligibility categories have changed during the period. The allocation of settlers to categories is based on assumptions, to align as closely as possible past policies with current policy. Comparisons between years are therefore indicative only.

(b) Based on stated intention at time of arrival only. There can be no guarantee that the settler actually settled in this state.

(c) Includes 'not stated'. From 1994-95 also includes Other Territories which comprise Christmas Island, Cocos (Keeling) Islands and Jervis Bay. Previously published as Table 2.8 in Consolidated Statistics (ceased production 2000).

Australia

Table 1.6 (continued) **Settler arrivals by eligibility category^(a) and State or Territory of intended residence, 1998-99 to 2010-11**

Financial Year	State or Territory of intended residence (b)								
	New South Wales	Victoria	Queensland	South Australia	Western Australia	Tasmania	Northern Territory	Australian Capital Territory	Australia (c)
	Humanitarian								
1998-99	3 347	2 844	724	733	910	122	42	67	8 790
1999-00	3 097	2 122	550	494	854	37	46	66	7 267
2000-01	2 797	2 157	677	642	1 048	142	73	100	7 640
2001-02	2 519	1 907	626	558	749	197	57	119	6 732
2002-03	3 583	2 829	950	686	1 033	302	92	94	9 569
2003-04	3 507	3 189	990	844	1 243	351	107	104	10 335
2004-05	4 240	3 936	1 506	1 196	1 749	300	137	171	13 235
2005-06	4 269	3 433	1 432	1 072	1 367	200	152	188	12 113
2006-07	4 192	3 311	1 398	1 229	1 634	244	142	97	12 247
2007-08	2 958	2 787	976	835	1 440	237	94	180	9 507
2008-09	4 151	3 035	1 159	1 013	1 688	303	108	188	11 645
2009-10	3 180	2 670	1 284	952	1 149	399	103	119	9 856
2010-11	2 797	2 440	1 354	1 144	817	359	75	144	9 130
	Non-program migration ^(d)								
1998-99	9 059	4 070	9 254	487	2 421	121	116	215	25 746
1999-00	12 947	5 896	10 479	525	2 265	150	130	230	32 628
2000-01	19 173	8 890	12 005	729	2 313	173	122	321	43 739
2001-02	8 188	4 679	7 336	493	1 532	95	85	204	22 612
2002-03	5 800	3 316	6 549	375	1 215	136	55	151	17 597
2003-04	6 186	3 653	7 940	400	1 431	122	102	138	19 972
2004-05	6 846	4 192	9 698	490	2 137	121	76	152	23 712
2005-06	6 493	4 471	10 803	528	2 428	103	125	146	25 098
2006-07	7 071	5 517	13 355	541	3 023	116	103	173	29 899
2007-08	7 290	6 494	16 306	688	4 651	173	143	173	35 919
2008-09	6 768	6 326	15 260	728	4 967	184	193	214	34 640
2009-10	6 176	5 400	9 904	555	3 401	167	148	210	25 961
2010-11	8 199	8 044	13 382	624	5 544	151	201	271	36 416
	Total								
1998-99	35 141	17 291	16 028	3 320	10 672	442	474	763	84 143
1999-00	39 311	19 319	17 286	3 105	11 512	444	471	809	92 272
2000-01	46 745	24 159	19 535	3 183	11 565	564	472	1 115	107 366
2001-02	35 301	21 374	15 825	3 316	10 954	589	459	1 075	88 900
2002-03	36 431	23 109	16 182	3 657	12 279	811	483	957	93 914
2003-04	40 561	28 028	20 284	4 773	15 411	884	596	1 050	111 590
2004-05	44 746	30 581	22 660	6 364	16 318	944	592	1 217	123 424
2005-06	44 661	32 297	24 862	9 099	17 638	879	780	1 372	131 593
2006-07	43 835	34 698	28 640	10 061	19 783	968	843	1 311	140 148
2007-08	43 520	37 213	32 496	9 896	22 738	1 092	888	1 518	149 365
2008-09	47 030	39 559	33 029	9 695	24 463	1 219	1 079	1 942	158 021
2009-10	42 267	36 725	24 946	11 377	20 976	1 250	1 196	1 869	140 610
2010-11	38 816	33 632	25 827	7 204	18 441	949	960	1 623	127 458

(a) Migration eligibility categories have changed during the period. The allocation of settlers to categories is based on assumptions, to align as closely as possible past policies with current policy. Comparisons between years are therefore indicative only.

(b) Based on stated intention at time of arrival only. There can be no guarantee that the settler actually settled in this state.

(c) Includes 'not stated'. From 1994-95 also includes Other Territories which comprise Christmas Island, Cocos (Keeling) Islands and Jervis Bay.

(d) Includes New Zealand citizens and children born to Australian citizens overseas.

Previously published as Table 2.8 in Consolidated Statistics (ceased publication 2000).

New South Wales

Table 2.1 Settler arrivals by birthplace, 2000-01 to 2010-11

Birthplace	2000-01	2001-02	2002-03	2003-04	2004-05	2005-06	2006-07	2007-08	2008-09	2009-10	2010-11
Oceania											
<i>Australia & External Territories (a)</i>	247	211	166	162	230	254	182	225	199	196	243
<i>New Zealand</i>	9 419	5 103	3 810	4 088	4 567	4 482	5 240	5 233	4 738	4 071	5 615
<i>Melanesia</i>											
New Caledonia	2	1	2	-	4	3	1	1	1	6	3
Papua New Guinea	25	18	26	31	20	43	21	30	12	4	11
Solomon Islands	3	8	9	2	6	6	8	4	2	3	4
Vanuatu	15	8	5	1	7	8	9	4	6	11	10
<i>Total</i>	45	35	42	34	37	60	39	39	21	24	28
<i>Micronesia</i>											
Guam	2	-	2	-	1	-	-	-	-	-	-
Kiribati	-	-	-	-	-	-	-	-	6	1	-
Marshall Islands	-	-	-	-	-	2	-	-	-	-	-
Nauru	1	1	1	2	1	-	1	-	-	-	-
Northern Mariana Islands	-	-	-	-	-	-	-	1	-	-	-
Palau	-	-	-	-	-	-	-	-	-	1	1
<i>Total</i>	3	1	3	2	2	2	1	1	6	2	1
<i>Polynesia (excluding Hawaii)</i>											
Cook Islands	104	59	24	40	29	35	38	57	74	30	59
Fiji	1 374	1 014	1 022	901	1 058	1 046	819	901	851	717	612
French Polynesia	1	1	3	2	2	2	1	2	4	1	3
Niue	28	15	11	11	17	9	10	15	8	9	17
Samoa	684	405	238	283	310	264	169	168	180	189	182
Samoa American	8	2	1	1	6	3	-	4	1	-	-
Tokelau	15	26	6	18	16	23	7	5	7	9	9
Tonga	255	180	131	138	163	161	101	90	115	95	81
Tuvalu	1	-	-	1	2	-	-	-	3	-	-
<i>Total</i>	2 470	1 702	1 436	1 395	1 603	1 543	1 145	1 242	1 243	1 050	963
Total Oceania	12 184	7 052	5 457	5 681	6 439	6 341	6 607	6 740	6 207	5 343	6 850
Europe											
<i>United Kingdom & Ireland</i>											
UK	2 578	2 577	3 443	4 519	3 923	4 561	4 192	4 034	4 045	3 063	2 515
Ireland	357	235	320	384	398	386	381	404	493	440	344
<i>Total</i>	2 935	2 812	3 763	4 903	4 321	4 947	4 573	4 438	4 538	3 503	2 859
<i>Western Europe</i>											
Austria	20	15	36	41	18	24	36	29	47	30	16
Belgium	23	24	36	29	24	18	14	28	24	28	16
France	96	99	131	156	120	119	112	128	132	126	137
Germany	274	250	263	312	255	247	242	279	251	259	190
Liechtenstein	-	-	-	1	-	-	-	-	-	-	-
Luxembourg	-	-	1	1	1	-	-	-	-	1	4
Monaco	-	-	2	-	-	1	-	-	-	-	-
Netherlands	146	143	125	130	122	130	105	114	143	123	90
Switzerland	68	48	76	71	58	68	42	66	52	50	57
<i>Total</i>	627	579	670	741	598	607	551	644	649	617	510

(a) The Australia component consists of persons born in Australia who have settled overseas and returned.

New South Wales

Table 2.1 (continued) **Settler arrivals by birthplace, 2000-01 to 2010-11**

Birthplace	2000-01	2001-02	2002-03	2003-04	2004-05	2005-06	2006-07	2007-08	2008-09	2009-10	2010-11
<i>Northern Europe</i>											
Denmark	40	31	32	31	29	34	26	26	17	26	19
Finland	18	19	14	16	22	23	16	22	18	14	20
Iceland	-	1	-	-	-	-	2	-	3	1	1
Norway	12	10	14	20	16	24	19	16	19	19	24
Sweden	48	53	44	86	54	56	50	51	59	49	52
Total	118	114	104	153	121	137	113	115	116	109	116
<i>Southern Europe</i>											
Andorra	-	-	-	-	-	-	-	1	-	-	1
Gibraltar	-	-	1	2	3	1	3	1	-	3	2
Italy	65	73	51	56	55	51	62	50	52	94	52
Malta	18	13	6	15	24	8	22	24	24	6	24
Portugal	8	16	16	16	10	10	12	15	21	32	12
Spain	33	32	29	40	31	33	60	37	47	25	55
Total	124	134	103	129	123	103	159	128	144	160	146
<i>South Eastern Europe</i>											
Albania	10	16	17	18	11	16	9	13	19	9	5
Bosnia & Herzegovina (b)	199	117	47	40	35	39	34	26	15	24	13
Bulgaria	54	45	28	23	39	24	20	29	28	17	18
Croatia (b)	581	306	119	48	19	32	32	28	26	16	12
Cyprus	29	15	8	17	14	13	9	9	10	8	3
Fmr Yugo Rep of Macedonia (b)	185	166	173	143	121	140	122	119	92	89	69
Greece	43	38	48	42	30	42	22	19	39	23	36
Moldova	-	6	3	5	7	8	4	6	4	2	3
Montenegro (b)	-	-	-	-	-	-	-	1	4	-	3
Romania	96	75	77	76	85	60	68	74	59	50	34
Serbia (b)	-	-	-	-	-	-	13	49	57	62	66
Fmr Serbia & Montenegro (b)	669	682	525	365	233	170	157	86	80	58	51
Slovenia	8	-	3	5	1	8	7	8	4	8	13
Total	1 874	1 466	1 048	782	595	552	497	467	437	366	326
<i>Eastern Europe</i>											
Belarus (c)	9	5	8	7	27	28	15	5	17	11	10
Czech Republic (d)	5	8	7	7	10	10	19	18	21	15	9
Estonia (c)	5	16	8	6	3	4	3	2	5	11	7
Former Czechoslovakia (d)	48	68	60	61	48	48	54	49	24	33	23
Hungary	27	31	29	40	49	41	47	54	39	34	41
Latvia (c)	6	1	20	11	13	11	9	9	10	6	10
Lithuania (c)	9	14	9	15	21	8	7	5	10	15	9
Poland	97	71	95	112	119	107	87	110	93	86	80
Russian Federation (c)	41	36	52	100	166	200	162	164	295	164	132
Slovakia (d)	8	6	12	16	9	10	11	12	12	16	14
Ukraine	26	31	45	78	94	77	74	79	72	71	58
Total	281	287	345	453	559	544	488	507	598	462	393
Total Europe	5 959	5 392	6 033	7 161	6 317	6 890	6 381	6 299	6 482	5 217	4 350

(b) As reliable data are not available for component countries prior to 1995-96, care should be taken when interpreting the data. Serbia and Montenegro was previously called the Federal Republic of Yugoslavia and since 1998-99 contains the Former Yugoslavia nfd. See page 64.

(c) As reliable data are not available for component countries prior to 1995-96, care should be taken when interpreting the data. See page 64.

(d) As reliable data are not available for component countries prior to 1995-96, care should be taken when interpreting the data. See page 64.

New South Wales

Table 2.1 (continued) **Settler arrivals by birthplace, 2000-01 to 2010-11**

Birthplace	2000-01	2001-02	2002-03	2003-04	2004-05	2005-06	2006-07	2007-08	2008-09	2009-10	2010-11
North Africa & The Middle East											
<i>North Africa</i>											
Algeria	18	18	19	16	20	14	5	14	12	12	16
Egypt	222	180	227	287	369	356	324	278	355	409	344
Libya	8	5	7	14	9	6	9	9	11	13	8
Morocco	11	15	15	15	19	28	21	21	18	15	24
Sudan	357	277	771	1 318	1 424	1 017	733	262	233	180	152
Tunisia	2	5	14	4	3	2	6	7	3	9	5
Total	618	500	1 053	1 654	1 844	1 423	1 098	591	632	638	549
<i>The Middle East</i>											
Bahrain	2	10	4	7	17	11	12	16	13	3	7
Gaza Strip & West Bank	9	16	3	14	2	3	5	6	4	6	-
Iran	435	371	411	370	461	445	445	455	871	674	951
Iraq	1 012	739	1 449	1 113	1 176	1 550	1 316	1 319	2 413	1 454	1 516
Israel	50	57	115	111	167	121	99	111	104	96	46
Jordan	122	73	114	124	166	131	94	106	138	95	78
Kuwait	57	38	42	38	29	82	54	54	64	45	54
Lebanon	1 086	802	1 136	935	1 017	871	960	935	779	647	569
Oman	5	1	4	3	13	10	8	11	18	3	5
Qatar	11	5	3	8	8	10	5	6	8	8	2
Saudi Arabia	25	24	29	15	41	23	31	38	34	53	30
Syria	119	104	131	126	152	158	138	126	166	102	146
Turkey	183	226	296	275	230	224	118	135	153	130	169
United Arab Emirates	23	36	63	58	77	87	83	86	80	88	92
Yemen	10	4	15	3	3	2	5	-	3	-	5
Middle East nfd	11	14	20	15	28	15	14	22	31	14	7
Total	3 160	2 520	3 835	3 215	3 587	3 743	3 387	3 426	4 879	3 418	3 677
Total North Africa & the Middle East	3 778	3 020	4 888	4 869	5 431	5 166	4 485	4 017	5 511	4 056	4 226
Southeast Asia											
Brunei	10	2	7	12	6	4	2	1	9	5	1
Burma (Myanmar)	109	111	92	93	142	165	405	420	365	299	249
Cambodia	168	211	240	183	208	205	247	247	282	302	250
East Timor (e)	3	3	3	9	4	6	6	12	3	3	2
Indonesia (e)	1 651	1 623	1 300	1 138	806	851	736	733	668	557	505
Laos	35	26	22	26	28	30	46	44	33	23	30
Malaysia	574	403	503	819	652	628	573	647	493	436	366
Philippines	1 664	1 312	1 490	1 828	1 915	2 072	2 086	2 248	2 199	1 963	1 739
Singapore	350	301	307	423	559	427	279	353	236	223	210
Thailand	295	468	434	369	473	554	631	641	693	553	563
Vietnam	602	714	928	820	838	1 142	1 186	1 076	1 090	1 138	1 212
Southeast Asia nfd	-	-	-	-	-	-	-	-	-	1	-
Total Southeast Asia	5 461	5 174	5 326	5 720	5 631	6 084	6 197	6 422	6 071	5 503	5 127

(e) East Timor previously recorded under Indonesia, care should be taken when interpreting the data.

New South Wales

Table 2.1 (continued) **Settler arrivals by birthplace, 2000-01 to 2010-11**

Birthplace	2000-01	2001-02	2002-03	2003-04	2004-05	2005-06	2006-07	2007-08	2008-09	2009-10	2010-11
Northeast Asia											
China (f)	5 945	4 214	4 221	5 010	6 273	5 296	5 450	5 612	6 744	7 062	6 259
Hong Kong (g)	873	495	496	525	602	495	437	346	355	311	355
Japan	248	194	221	229	257	240	213	206	184	149	145
Korea	900	491	582	664	1 020	1 156	1 074	1 289	1 308	1 069	872
Macau (g)	15	15	5	12	12	9	11	9	10	13	9
Mongolia	-	1	8	3	2	5	2	5	11	9	9
Taiwan	1 009	680	364	314	242	191	158	207	182	186	148
Total Northeast Asia	8 990	6 090	5 897	6 757	8 408	7 392	7 345	7 674	8 794	8 799	7 797
Southern Asia											
Bangladesh	750	306	302	405	492	575	522	639	836	722	752
Bhutan	2	-	1	-	-	-	1	1	172	137	123
India	3 137	2 388	2 759	3 639	4 156	4 615	5 250	5 188	5 547	4 441	3 373
Maldives	1	-	-	-	4	-	1	2	-	2	-
Nepal	154	110	127	150	191	218	295	379	461	419	377
Pakistan	786	495	444	578	762	680	740	632	739	769	642
Sri Lanka	884	713	618	506	762	618	673	799	929	952	690
Total Southern Asia	5 714	4 012	4 251	5 278	6 367	6 706	7 482	7 640	8 684	7 442	5 957
Central Asia											
Afghanistan	275	290	443	507	830	1 053	648	422	460	372	408
Armenia (d)	2	4	8	8	5	4	8	4	8	8	4
Azerbaijan (d)	1	8	3	3	4	3	4	3	4	-	3
Georgia (d)	6	5	7	1	5	2	8	3	4	4	3
Kazakhstan (d)	9	5	7	22	7	24	7	13	20	18	5
Kyrgyz Republic (d)	1	2	1	5	3	6	-	5	2	6	2
Tajikistan (d)	1	2	1	-	-	3	-	-	2	-	2
Turkmenistan (d)	-	1	-	2	-	5	2	-	-	4	-
Uzbekistan (d)	2	4	6	11	11	16	15	15	21	6	10
Total Central Asia	297	321	476	559	865	1 116	692	465	521	418	437
Northern America											
Bermuda	1	1	3	-	3	1	1	-	1	6	5
Canada	280	206	226	211	235	299	240	217	256	275	243
USA	508	418	523	496	621	645	546	548	530	539	565
Total Northern America	789	625	752	707	859	945	787	765	787	820	813

(d) As reliable data are not available for component countries prior to 1995-96, care should be taken when interpreting the data. See page 64.

(f) Excluding SARs and Taiwan.

(g) SAR of China.

New South Wales

Table 2.1 (continued) **Settler arrivals by birthplace, 2000-01 to 2010-11**

Birthplace	2000-01	2001-02	2002-03	2003-04	2004-05	2005-06	2006-07	2007-08	2008-09	2009-10	2010-11
South America, Central America & the Caribbean											
<i>South America</i>											
Argentina	45	21	76	167	179	110	80	62	49	87	58
Bolivia	13	12	6	16	5	8	9	10	5	7	9
Brazil	38	68	92	94	194	162	168	152	170	221	169
Chile	76	77	105	106	91	93	68	77	83	63	70
Colombia	79	97	117	94	134	131	112	113	123	168	118
Ecuador	29	19	32	43	32	38	19	21	26	18	12
Falkland Islands	-	1	-	-	-	1	-	-	-	-	-
French Guiana	1	-	-	1	-	-	-	-	-	-	-
Guyana	1	-	-	-	-	2	2	2	1	1	-
Paraguay	1	6	-	2	1	7	2	3	4	6	-
Peru	89	71	108	102	122	175	160	139	140	114	88
Suriname	-	-	5	4	1	-	-	3	1	-	-
Uruguay	17	16	30	38	46	52	18	28	16	8	18
Venezuela	26	25	37	22	69	90	62	101	117	156	72
South America nfd	-	-	-	-	-	-	1	1	-	-	-
Total	415	413	608	689	874	869	701	712	735	849	614
<i>Central America</i>											
Belize	1	-	1	-	-	-	-	-	1	-	1
Costa Rica	2	3	-	-	3	5	2	3	6	1	1
El Salvador	7	3	3	13	5	10	4	11	10	11	14
Guatemala	5	3	1	4	-	3	5	4	6	2	4
Honduras	-	1	3	3	3	1	1	-	-	1	-
Mexico	6	24	21	16	26	69	49	73	77	62	45
Nicaragua	-	3	2	-	1	3	3	3	2	-	1
Panama	1	1	1	2	3	6	2	3	2	3	2
Central America nfd	1	-	-	1	-	-	1	-	-	1	-
Total	23	38	32	39	41	97	67	97	104	81	68
<i>The Caribbean</i>											
Antigua & Barbuda	-	-	-	-	-	-	-	-	1	-	-
Bahamas	1	2	1	2	1	1	-	-	-	1	-
Barbados	1	1	-	1	2	1	-	4	-	3	-
Cayman Islands	1	1	-	1	1	-	1	1	-	3	1
Cuba	6	7	8	10	8	11	5	18	9	15	4
Dominica	-	-	-	1	-	-	-	-	-	-	-
Dominican Republic	-	3	-	1	-	3	3	6	2	1	2
Grenada	-	-	-	-	-	1	-	2	-	-	-
Guadeloupe	-	1	1	-	-	-	-	-	-	-	-
Haiti	-	-	-	-	-	3	-	-	-	-	-
Jamaica	10	4	3	3	7	7	6	6	13	12	3
Martinique	-	-	-	-	-	-	-	-	-	1	-
Montserrat	-	-	-	-	-	1	-	-	-	-	-
Netherlands Antilles	-	4	-	-	-	3	1	-	-	-	1
Puerto Rico	-	2	1	1	-	-	2	1	-	-	1

New South Wales

Table 2.1 (continued) **Settler arrivals by birthplace, 2000-01 to 2010-11**

Birthplace	2000-01	2001-02	2002-03	2003-04	2004-05	2005-06	2006-07	2007-08	2008-09	2009-10	2010-11
<i>The Caribbean (continued)</i>											
St Kitts & Nevis	-	-	-	-	-	-	-	-	1	-	1
St Lucia	-	-	-	-	-	2	2	-	-	1	1
St Vincent & The Grenadines	-	-	-	-	-	1	-	-	2	1	-
Trinidad & Tobago	3	2	-	5	8	6	1	5	3	7	-
Turks & Caicos Islands	-	-	-	-	-	1	-	-	-	-	-
Virgin Islands United States	-	-	-	-	-	1	-	-	-	-	-
Caribbean nfd	-	-	-	-	-	-	1	-	-	-	-
Total	22	27	14	25	27	42	22	43	31	45	14
Total South America, Central America & The Caribbean	460	478	654	753	942	1 008	790	852	870	975	696
Sub-Saharan Africa											
<i>Central & West Africa</i>											
Benin	-	-	-	-	-	-	4	9	4	2	2
Burkina Faso	-	3	-	-	-	-	-	-	-	1	1
Cameroon	-	1	5	3	2	1	3	6	-	2	9
Cape Verde	-	-	-	-	-	-	-	1	-	-	-
Central African Republic	-	-	-	-	-	-	-	2	-	-	-
Chad	-	-	-	-	1	-	-	2	-	-	-
Congo	4	2	3	33	59	34	44	9	38	26	14
Congo Democratic Republic	2	3	-	4	4	27	154	144	98	170	127
Cote D'Ivoire	1	-	2	2	30	26	29	13	21	6	9
Gabon	-	-	-	-	2	-	-	1	1	-	1
Gambia	-	1	2	-	-	2	5	1	-	-	-
Ghana	56	42	72	73	88	115	121	93	71	121	106
Guinea	-	5	10	6	58	46	49	35	19	56	26
Guinea-Bissau	-	1	1	-	-	1	-	-	-	-	1
Liberia	2	25	55	37	254	190	169	49	68	36	24
Mali	-	-	-	1	-	-	-	-	-	-	-
Mauritania	-	-	-	-	-	1	3	13	-	-	-
Niger	6	1	-	-	2	3	3	1	5	-	-
Nigeria	33	49	41	35	53	69	75	59	83	118	65
Senegal	1	8	1	3	4	5	2	8	3	5	4
Sierra Leone	63	160	95	64	250	332	317	160	124	238	88
Togo	3	1	1	2	-	1	13	31	14	41	15
Total	171	302	288	263	807	853	991	637	549	822	492
<i>Southern & East Africa</i>											
Angola	-	2	1	-	2	1	6	2	2	2	-
Botswana	9	4	4	6	11	6	14	8	8	7	5
Burundi	-	1	5	22	66	78	174	64	46	57	15
Comoros	-	-	-	-	-	-	-	-	-	1	-
Djibouti	1	1	1	1	2	-	1	1	-	1	-
Eritrea (h)	21	31	10	19	21	17	21	7	31	26	26
Ethiopia (h)	55	65	134	120	56	63	87	74	130	180	92
Kenya	66	79	153	140	158	158	159	98	127	106	77
Lesotho	1	3	1	-	1	1	2	-	-	-	-
Madagascar	-	1	2	1	-	1	1	-	-	2	3
Malawi	4	9	3	5	8	2	6	5	4	6	22

(h) As reliable data are not available for component countries prior to 1995-96, care should be taken when interpreting the data.

New South Wales

Table 2.1 (continued) **Settler arrivals by birthplace, 2000-01 to 2010-11**

Birthplace	2000-01	2001-02	2002-03	2003-04	2004-05	2005-06	2006-07	2007-08	2008-09	2009-10	2010-11
<i>Southern & East Africa</i> (continued)											
Mauritius	34	33	34	45	44	25	53	48	41	51	45
Mozambique	3	3	2	4	4	3	-	5	4	4	4
Namibia	13	21	14	3	19	5	5	3	14	14	8
Reunion	-	1	-	1	-	1	-	-	2	-	1
Rwanda	1	-	1	12	15	10	28	8	8	44	15
St Helena	-	-	1	-	-	1	-	-	-	-	-
Seychelles	-	5	2	11	-	1	3	1	2	-	-
Somalia	72	74	45	32	58	58	54	23	107	106	43
South Africa	2 148	1 912	1 454	1 732	1 464	995	848	1 070	1 505	1 668	1 146
Swaziland	1	3	2	1	-	2	1	-	5	2	1
Tanzania	7	10	7	12	49	58	124	99	47	49	26
Uganda	8	18	25	38	75	39	55	42	30	43	29
Zambia	31	43	24	36	16	16	18	25	24	31	21
Zimbabwe	167	199	205	332	342	346	251	232	180	149	138
Southern & East Africa nfd	1	-	-	1	-	-	-	-	-	-	-
Total	2 643	2 518	2 130	2 574	2 411	1 887	1 911	1 815	2 317	2 549	1 717
Total											
Sub-Saharan Africa	2 814	2 820	2 418	2 837	3 218	2 740	2 902	2 452	2 866	3 371	2 209
Supplementary codes (i)											
Fmr USSR	275	301	275	223	267	269	162	181	235	317	353
Total	275	301	275	223	267	269	162	181	235	317	353
Not stated	24	16	4	16	2	4	5	13	2	6	1
Total all countries	46 745	35 301	36 431	40 561	44 746	44 661	43 835	43 520	47 030	42 267	38 816

(i) Supplementary codes cannot be classified to any major region in the Standard Australian Classification of Countries (SACC). This may lead to under reporting of their component countries in the rest of the table, care should be taken when interpreting the data.

Victoria

Table 3.1 Settler arrivals by birthplace, 2000-01 to 2010-11

Birthplace	2000-01	2001-02	2002-03	2003-04	2004-05	2005-06	2006-07	2007-08	2008-09	2009-10	2010-11
Oceania											
<i>Australia & External Territories (a)</i>	131	82	81	95	90	117	127	172	160	143	200
<i>New Zealand</i>	4 806	3 156	2 242	2 549	2 912	3 168	4 178	4 786	4 467	3 696	5 486
<i>Melanesia</i>											
New Caledonia	-	2	-	-	-	1	-	1	-	-	-
Papua New Guinea	8	8	13	12	7	7	12	10	7	5	11
Solomon Islands	2	-	2	7	1	-	3	3	3	8	-
Vanuatu	-	3	3	4	-	6	2	3	1	6	3
Total	10	13	18	23	8	14	17	17	11	19	14
<i>Micronesia</i>											
Kiribati	-	2	1	1	1	-	-	-	3	-	-
Marshall Islands	-	-	-	-	-	-	-	-	-	-	1
Micronesia Federated States	-	1	3	-	-	-	1	-	-	-	-
Nauru	3	12	5	1	4	4	1	1	3	1	-
Palau	-	-	-	-	-	-	-	-	-	1	4
Total	3	15	9	2	5	4	2	1	6	2	5
<i>Polynesia (excluding Hawaii)</i>											
Cook Islands	61	25	24	28	32	27	25	44	71	35	51
Fiji	331	265	279	312	316	331	311	364	310	255	249
French Polynesia	2	-	-	-	2	-	1	-	5	-	1
Niue	7	3	1	5	2	2	5	18	12	13	12
Samoa	233	116	97	111	145	126	90	133	156	129	160
Samoa American	-	5	2	-	1	-	-	3	1	-	-
Tokelau	1	2	-	-	1	-	-	6	4	4	8
Tonga	70	38	39	44	42	46	27	18	29	49	40
Tuvalu	-	-	-	-	1	2	-	-	1	-	-
Total	705	454	442	500	542	534	459	586	589	485	521
Total Oceania	5 655	3 720	2 792	3 169	3 557	3 837	4 783	5 562	5 233	4 345	6 226
Europe											
<i>United Kingdom & Ireland</i>											
UK	1 529	1 446	2 020	2 854	2 877	3 558	3 221	3 189	3 033	2 646	1 753
Ireland	109	91	114	177	163	171	169	194	233	258	258
Total	1 638	1 537	2 134	3 031	3 040	3 729	3 390	3 383	3 266	2 904	2 011
<i>Western Europe</i>											
Austria	23	17	19	23	29	17	18	12	19	23	8
Belgium	12	13	12	15	19	15	14	16	8	15	14
France	38	47	65	69	74	54	58	55	62	67	72
Germany	174	158	190	145	193	216	210	174	172	167	145
Luxembourg	-	-	-	-	-	3	-	-	-	-	7
Monaco	-	-	-	-	-	-	-	-	1	-	1
Netherlands	69	60	104	92	79	131	84	124	103	68	66
Switzerland	29	42	33	32	39	29	32	36	24	30	24
Total	345	337	423	376	433	465	416	417	389	370	337

(a) The Australia component consists of persons born in Australia who have settled overseas and returned.

Victoria

Table 3.1 (continued) **Settler arrivals by birthplace, 2000-01 to 2010-11**

Birthplace	2000-01	2001-02	2002-03	2003-04	2004-05	2005-06	2006-07	2007-08	2008-09	2009-10	2010-11
<i>Northern Europe</i>											
Denmark	17	24	19	13	18	14	15	16	20	11	8
Finland	10	9	9	12	11	15	19	16	21	22	9
Iceland	-	-	-	1	-	-	1	1	-	1	-
Norway	6	2	10	6	13	15	12	16	11	18	10
Sweden	29	32	24	34	30	41	27	40	36	41	25
Total	62	67	62	66	72	85	74	89	88	93	52
<i>Southern Europe</i>											
Gibraltar	-	-	-	1	2	1	-	-	-	2	3
Italy	47	87	39	49	38	62	60	53	52	72	59
Malta	14	10	40	25	51	16	64	47	28	19	21
Portugal	9	2	7	6	17	9	10	7	9	9	5
Spain	17	8	25	14	27	16	18	17	30	28	27
Total	87	107	111	95	135	104	152	124	119	130	115
<i>South Eastern Europe</i>											
Albania	25	36	218	74	75	78	58	50	66	55	40
Bosnia & Herzegovina (b)	304	149	72	37	34	43	39	52	32	32	34
Bulgaria	34	22	22	47	40	36	35	29	17	17	16
Croatia (b)	241	131	83	44	19	33	33	22	34	23	28
Cyprus	22	18	17	31	10	11	13	8	6	13	8
Fmr Yugo Rep of Macedonia (b)	165	154	154	184	147	164	147	158	156	120	127
Greece	34	43	37	35	27	39	38	38	29	15	67
Moldova	-	3	3	10	1	9	7	10	3	9	11
Montenegro (b)	-	-	-	-	-	-	1	8	2	4	3
Romania	113	105	120	99	107	127	104	78	87	86	43
Serbia (b)	-	-	-	-	-	-	12	55	54	56	42
Fmr Serbia & Montenegro (b)	896	693	562	307	244	143	174	114	79	91	59
Slovenia (b)	6	1	1	6	4	-	5	14	7	4	5
Total	1 840	1 355	1 289	874	708	683	666	636	572	525	483
<i>Eastern Europe</i>											
Belarus (c)	5	4	2	4	14	14	8	7	14	4	7
Czech Republic (d)	5	3	2	4	5	8	11	9	7	3	4
Estonia (c)	2	4	2	4	5	2	2	2	3	5	3
Former Czechoslovakia (d)	21	29	29	24	18	16	15	18	15	10	3
Hungary	9	20	26	21	24	31	34	26	42	31	23
Latvia (c)	6	9	-	11	8	6	4	10	10	8	1
Lithuania (c)	6	9	3	13	6	7	5	3	6	8	13
Poland	69	66	72	117	102	77	73	90	84	80	59
Russian Federation (c)	16	19	20	54	148	124	86	136	174	99	110
Slovakia (d)	-	2	1	7	3	3	4	8	1	9	3
Ukraine	27	40	24	85	64	75	76	51	51	41	34
Eastern Europe nfd	-	-	-	1	-	-	-	-	-	-	-
Total	166	205	181	345	397	363	318	360	407	298	260
Total Europe	4 138	3 608	4 200	4 787	4 785	5 429	5 016	5 009	4 841	4 320	3 258

(b) As reliable data are not available for component countries prior to 1995-96, care should be taken when interpreting the data. Serbia and Montenegro was previously called the Federal Republic of Yugoslavia and since 1998-99 contains the Former Yugoslavia nfd. See page 64.

(c) As reliable data are not available for component countries prior to 1995-96, care should be taken when interpreting the data. See page 64.

(d) As reliable data are not available for component countries prior to 1995-96, care should be taken when interpreting the data. See page 64.

Victoria

Table 3.1 (continued) **Settler arrivals by birthplace, 2000-01 to 2010-11**

Birthplace	2000-01	2001-02	2002-03	2003-04	2004-05	2005-06	2006-07	2007-08	2008-09	2009-10	2010-11
North Africa & The Middle East											
<i>North Africa</i>											
Algeria	8	6	7	7	5	7	5	1	2	3	3
Egypt	128	121	199	307	308	288	269	230	275	253	245
Libya	7	4	8	5	6	9	4	10	2	13	2
Morocco	2	5	18	10	10	11	14	18	14	18	21
Sudan	257	326	919	1 530	2 022	1 332	854	279	302	205	207
Tunisia	4	-	3	-	1	1	3	-	2	7	5
Total	406	462	1 154	1 859	2 352	1 648	1 149	538	597	499	483
<i>The Middle East</i>											
Bahrain	6	1	10	6	8	9	16	5	10	4	4
Gaza Strip & West Bank	6	4	1	1	2	-	3	-	1	-	-
Iran	169	98	164	198	206	175	263	247	475	518	695
Iraq	385	396	768	549	595	624	666	619	1 073	669	855
Israel	38	81	88	157	150	141	140	117	113	119	73
Jordan	26	32	16	47	47	43	26	33	51	42	37
Kuwait	33	11	34	35	32	19	45	40	39	40	44
Lebanon	332	230	375	268	338	317	343	384	285	286	245
Oman	4	3	8	2	5	9	11	7	10	4	9
Qatar	5	4	2	1	2	3	10	7	8	9	5
Saudi Arabia	13	17	20	25	26	22	36	27	44	58	44
Syria	72	36	65	62	62	57	76	68	78	66	80
Turkey	201	286	338	343	312	237	156	179	230	164	225
United Arab Emirates	14	54	89	59	85	101	95	102	114	93	76
Yemen	1	3	3	14	4	4	2	7	4	1	1
Middle East nfd	2	6	3	15	26	14	7	6	4	11	6
Total	1 307	1 262	1 984	1 782	1 900	1 775	1 895	1 848	2 539	2 084	2 399
Total North Africa & the Middle East	1 713	1 724	3 138	3 641	4 252	3 423	3 044	2 386	3 136	2 583	2 882
Southeast Asia											
Brunei	16	6	17	10	20	12	4	4	4	17	3
Burma (Myanmar)	52	45	25	31	158	320	632	901	791	641	453
Cambodia	204	186	279	279	295	280	314	311	319	372	364
East Timor (e)	10	4	4	8	13	17	3	11	10	7	8
Indonesia (e)	910	1 074	709	601	534	406	376	373	378	324	313
Laos	9	6	8	13	35	6	37	11	16	10	13
Malaysia	847	773	1 008	1 439	1 082	1 062	1 111	1 215	1 214	1 226	1 076
Philippines	666	634	824	1 165	1 161	1 340	1 644	1 717	1 607	1 364	1 068
Singapore	396	406	500	729	881	829	482	512	377	421	333
Thailand	171	273	257	247	278	417	542	696	626	612	495
Vietnam	697	760	1 016	876	935	910	1 208	1 000	1 057	1 055	1 279
Total Southeast Asia	3 978	4 167	4 647	5 398	5 392	5 599	6 353	6 751	6 399	6 049	5 405

(e) East Timor previously recorded under Indonesia, care should be taken when interpreting the data.

Victoria

Table 3.1 (continued) **Settler arrivals by birthplace, 2000-01 to 2010-11**

Birthplace	2000-01	2001-02	2002-03	2003-04	2004-05	2005-06	2006-07	2007-08	2008-09	2009-10	2010-11
Northeast Asia											
China (f)	1 835	1 607	1 611	2 545	3 059	3 142	3 976	4 568	5 919	5 969	5 356
Hong Kong (g)	383	232	298	338	280	266	287	264	251	245	293
Japan	91	118	101	124	126	164	165	158	129	142	97
Korea	131	101	130	166	317	435	331	470	503	433	302
Macau (g)	7	10	12	8	13	4	4	4	9	8	10
Mongolia	-	-	-	-	9	3	7	1	5	5	2
Taiwan	432	248	166	138	120	198	137	133	141	131	120
Total Northeast Asia	2 879	2 316	2 318	3 319	3 924	4 212	4 907	5 598	6 957	6 933	6 180
Southern Asia											
Bangladesh	67	54	76	82	177	167	187	248	291	300	213
Bhutan	-	-	-	-	-	-	-	1	40	115	100
India	2 209	1 835	2 068	3 236	3 491	4 295	4 826	5 577	6 191	5 346	3 474
Maldives	-	4	3	1	1	-	3	5	1	9	1
Nepal	47	34	33	44	64	44	95	112	100	173	122
Pakistan	273	197	197	310	387	364	467	434	505	483	488
Sri Lanka	858	1 034	977	791	1 177	1 329	1 464	1 979	2 081	2 018	1 581
Total Southern Asia	3 454	3 158	3 354	4 464	5 297	6 199	7 042	8 356	9 209	8 444	5 979
Central Asia											
Afghanistan	138	190	265	364	326	738	729	625	497	468	686
Armenia (d)	1	3	2	3	-	1	3	3	1	2	-
Azerbaijan (d)	-	2	-	3	3	3	-	-	-	6	-
Georgia (d)	3	3	1	4	-	1	1	5	3	8	-
Kazakhstan (d)	4	2	4	6	10	9	15	15	18	6	5
Kyrgyz Republic (d)	-	1	2	8	4	11	5	10	3	-	3
Tajikistan (d)	-	-	1	-	-	1	2	-	-	2	1
Turkmenistan (d)	-	-	3	-	-	1	3	-	-	1	1
Uzbekistan (d)	5	8	3	11	6	15	19	14	12	6	9
Total Central Asia	151	209	281	399	349	780	777	672	534	499	705
Northern America											
Bermuda	4	7	2	-	-	1	-	2	2	1	1
Canada	114	105	119	150	134	131	138	136	180	170	164
USA	261	271	292	272	359	324	340	329	301	350	329
Total Northern America	379	383	413	422	493	456	478	467	483	521	494

(d) As reliable data are not available for component countries prior to 1995-96, care should be taken when interpreting the data. See page 64.

(f) Excluding SARs and Taiwan.

(g) SAR of China.

Victoria

Table 3.1 (continued) **Settler arrivals by birthplace, 2000-01 to 2010-11**

Birthplace	2000-01	2001-02	2002-03	2003-04	2004-05	2005-06	2006-07	2007-08	2008-09	2009-10	2010-11
South America, Central America & the Caribbean											
<i>South America</i>											
Argentina	17	28	38	102	69	68	18	25	27	54	11
Bolivia	1	1	1	-	2	2	-	-	1	8	1
Brazil	25	34	42	36	41	72	76	70	60	98	64
Chile	37	33	50	41	51	43	26	32	39	52	36
Colombia	20	20	43	36	49	39	45	55	73	96	101
Ecuador	2	1	2	3	4	3	3	9	2	5	7
Guyana	1	-	-	2	-	-	2	1	2	1	2
Paraguay	4	5	2	-	1	6	-	1	-	4	-
Peru	13	21	38	18	29	53	53	42	28	32	23
Suriname	-	-	-	-	-	1	-	-	-	-	-
Uruguay	4	7	14	8	14	9	8	4	10	5	4
Venezuela	3	6	6	8	22	28	34	48	59	69	43
South America nfd	-	2	-	-	-	-	-	-	-	1	-
Total	127	158	236	254	282	324	265	287	301	425	292
<i>Central America</i>											
Belize	-	-	-	-	-	-	-	-	-	-	1
Costa Rica	-	2	1	-	1	-	1	1	-	3	6
El Salvador	9	15	12	6	18	11	9	10	20	17	28
Guatemala	4	4	1	2	1	2	1	2	1	2	3
Honduras	-	-	-	-	1	2	1	3	-	-	3
Mexico	10	8	25	16	18	46	49	48	73	67	42
Nicaragua	-	-	-	-	-	-	-	-	1	-	4
Panama	-	-	1	-	1	1	-	1	1	1	-
Central America nfd	-	-	-	-	-	-	1	-	-	-	-
Total	23	29	40	24	40	62	62	65	96	90	87
<i>The Caribbean</i>											
Antigua & Barbuda	-	-	-	-	-	1	1	-	-	-	-
Bahamas	-	-	-	2	-	-	-	-	-	-	1
Barbados	1	-	1	-	-	2	-	3	-	4	-
Cayman Islands	-	-	-	-	-	-	-	3	1	-	1
Cuba	4	3	4	8	5	9	8	8	10	5	6
Dominica	-	-	-	1	-	-	-	1	-	-	-
Dominican Republic	-	1	1	2	-	-	-	-	3	1	-
Guadeloupe	-	1	1	-	1	-	-	-	1	-	-
Haiti	-	-	1	-	-	-	-	-	-	1	-
Jamaica	5	4	1	1	2	5	6	3	3	3	-
Montserrat	-	-	-	-	-	-	-	1	-	-	-
Netherlands Antilles	-	-	-	-	-	-	-	-	-	2	-
Puerto Rico	-	-	-	-	1	-	-	1	-	-	-
St Lucia	-	-	-	-	1	-	-	-	-	-	1
St Vincent and the Grenadines	-	-	-	-	-	-	-	-	-	-	1
Trinidad & Tobago	1	1	1	11	9	3	2	2	4	2	3
Total	11	10	10	25	19	20	17	22	22	18	13
Total South America, Central America & The Caribbean	161	197	286	303	341	406	344	374	419	533	392

Victoria

Table 3.1 (continued) Settler arrivals by birthplace, 2000-01 to 2010-11

Birthplace	2000-01	2001-02	2002-03	2003-04	2004-05	2005-06	2006-07	2007-08	2008-09	2009-10	2010-11
Sub-Saharan Africa											
<i>Central & West Africa</i>											
Benin	-	-	-	-	1	-	4	8	1	-	-
Burkina Faso	-	-	1	-	-	-	-	-	-	-	-
Cameroon	-	2	2	-	1	2	2	9	-	6	5
Cape Verde	-	-	-	-	-	-	1	-	-	-	-
Chad	-	-	-	-	-	1	-	-	-	-	5
Congo	4	2	1	7	11	21	7	2	1	3	12
Congo Democratic Republic	1	1	1	2	3	41	44	31	19	62	74
Cote D'Ivoire	-	-	2	-	29	8	9	30	20	27	4
Gambia	-	-	1	-	-	1	-	1	-	1	4
Ghana	5	17	7	33	17	28	60	26	21	48	33
Guinea	3	-	2	1	21	12	12	12	9	44	10
Guinea-Bissau	-	2	-	-	-	-	-	-	-	-	-
Liberia	3	-	2	2	176	54	69	47	68	83	17
Mali	-	-	1	-	1	1	-	-	-	2	1
Mauritania	-	-	-	-	1	1	-	1	-	-	-
Niger	1	1	-	-	-	-	1	1	2	-	-
Nigeria	31	30	16	19	29	33	46	48	66	73	54
Senegal	-	1	2	1	2	3	-	-	2	2	1
Sierra Leone	-	6	1	9	15	35	44	26	11	36	16
Togo	-	-	-	-	-	1	10	24	3	4	1
Total	48	62	39	74	307	242	309	266	223	391	237
<i>Southern & East Africa</i>											
Angola	1	7	-	-	-	1	3	-	1	-	1
Botswana	4	4	7	1	5	3	10	5	9	5	9
Burundi	-	-	-	1	58	67	20	16	4	13	7
Comoros	3	-	1	-	-	-	3	-	-	-	1
Djibouti	2	2	4	1	6	1	5	1	3	1	4
Eritrea (h)	54	53	59	74	67	68	49	58	66	69	43
Ethiopia (h)	190	183	254	299	276	228	282	248	310	306	302
Kenya	52	87	126	151	241	162	161	111	100	74	78
Lesotho	1	2	1	1	4	-	-	-	-	1	-
Madagascar	-	-	5	1	-	-	1	2	1	-	5
Malawi	4	2	2	3	9	8	6	4	1	4	12
Mauritius	79	78	72	138	106	135	181	219	298	118	100

(h) As reliable data are not available for component countries prior to 1995-96, care should be taken when interpreting the data. See page 64.

Victoria

Table 3.1 (continued) **Settler arrivals by birthplace, 2000-01 to 2010-11**

Birthplace	2000-01	2001-02	2002-03	2003-04	2004-05	2005-06	2006-07	2007-08	2008-09	2009-10	2010-11
<i>Southern & East Africa</i> (continued)											
Mozambique	-	4	8	1	2	1	-	4	4	3	4
Namibia	1	2	3	5	13	6	8	8	6	1	6
Reunion	-	-	-	-	-	-	-	-	1	-	1
Rwanda	-	1	-	-	6	2	4	3	15	12	4
St Helena	-	-	-	-	-	-	-	-	-	-	1
Seychelles	1	11	13	9	14	3	16	4	8	7	11
Somalia	184	218	116	125	85	99	109	43	106	189	149
South Africa	710	809	644	886	579	560	502	711	836	920	709
Swaziland	5	1	1	2	-	2	3	2	1	-	-
Tanzania	1	5	7	5	46	71	21	14	24	20	34
Uganda	6	5	8	7	32	28	51	21	26	44	25
Zambia	12	6	5	17	15	12	11	14	11	14	19
Zimbabwe	35	92	86	131	115	84	71	114	113	99	127
Southern & East Africa nfd	-	-	1	-	-	-	-	-	-	-	-
Total	1 345	1 572	1 423	1 858	1 679	1 541	1 517	1 602	1 944	1 900	1 652
Total											
Sub-Saharan Africa	1 393	1 634	1 462	1 932	1 986	1 783	1 826	1 868	2 167	2 291	1 889
Supplementary codes (i)											
Fmr USSR	255	253	212	191	199	170	122	152	179	202	217
Total	255	253	212	191	199	170	122	152	179	202	217
Not stated	3	5	6	3	6	3	6	18	2	5	5
Total all countries	24 159	21 374	23 109	28 028	30 581	32 297	34 698	37 213	39 559	36 725	33 632

(i) Supplementary codes cannot be classified to any major region in the Standard Australian Classification of Countries (SACC). This may lead to under reporting of their component countries in the rest of the table, care should be taken when interpreting the data.

Queensland

Table 4.1 Settler arrivals by birthplace, 2000-01 to 2010-11

Birthplace	2000-01	2001-02	2002-03	2003-04	2004-05	2005-06	2006-07	2007-08	2008-09	2009-10	2010-11
Oceania											
<i>Australia & External Territories (a)</i>	122	94	102	126	145	155	169	243	267	186	231
<i>New Zealand</i>	8 389	5 669	5 037	6 231	7 736	8 866	11 278	13 009	11 701	7 170	9 828
<i>Melanesia</i>											
New Caledonia	6	5	2	4	7	2	2	2	10	7	4
Papua New Guinea	102	86	161	129	138	152	182	196	184	127	169
Solomon Islands	19	24	7	18	29	7	20	15	14	11	15
Vanuatu	4	7	9	9	4	6	9	11	6	9	10
<i>Total</i>	131	122	179	160	178	167	213	224	214	154	198
<i>Micronesia</i>											
Guam	-	-	3	7	2	1	-	-	1	-	-
Kiribati	4	4	3	3	4	3	14	3	5	11	4
Micronesia Federated States	-	-	-	-	2	-	-	2	-	-	-
Nauru	-	-	2	3	3	2	5	1	4	6	-
Northern Mariana Islands	-	-	-	1	-	-	-	-	-	-	-
Palau	-	-	-	-	-	-	-	-	-	1	1
<i>Total</i>	4	4	8	14	11	6	19	6	10	18	5
<i>Polynesia (excluding Hawaii)</i>											
Cook Islands	67	37	31	35	30	34	47	103	123	62	100
Fiji	381	263	253	336	302	365	299	420	492	353	384
French Polynesia	3	1	2	1	3	1	-	3	4	-	2
Niue	21	10	9	11	15	12	10	34	21	21	24
Samoa	354	224	154	250	266	191	142	271	360	228	264
Samoa American	-	4	1	9	4	5	3	8	5	-	1
Tokelau	14	4	9	10	9	7	7	17	13	9	20
Tonga	68	44	29	44	70	51	39	40	44	32	39
Tuvalu	5	1	4	2	3	2	2	-	2	10	-
Polynesia (excl. Hawaii)	-	-	-	-	-	-	-	-	-	3	-
<i>Total</i>	913	588	492	698	702	668	549	896	1 064	718	834
Total Oceania	9 559	6 477	5 818	7 229	8 772	9 862	12 228	14 378	13 256	8 246	11 096
Europe											
<i>United Kingdom & Ireland</i>											
UK	2 061	1 850	2 676	4 160	4 189	5 068	5 569	5 954	5 396	3 412	2 631
Ireland	85	63	77	159	116	202	229	256	319	258	290
<i>Total</i>	2 146	1 913	2 753	4 319	4 305	5 270	5 798	6 210	5 715	3 670	2 921
<i>Western Europe</i>											
Austria	16	35	23	17	17	19	16	21	22	9	10
Belgium	18	20	10	11	6	21	18	21	10	17	15
France	24	48	50	64	60	52	82	62	72	78	58
Germany	170	152	153	164	183	224	259	246	245	214	144
Liechtenstein	-	-	-	-	-	-	1	-	-	-	-
Luxembourg	-	-	-	-	3	-	1	1	-	-	4
Netherlands	91	106	91	105	123	140	169	147	116	71	87
Switzerland	44	42	48	33	42	66	42	49	53	30	46
<i>Total</i>	363	403	375	394	434	522	588	547	518	419	364

(a) The Australia component consists of persons born in Australia who have settled overseas and returned.

Queensland

Table 4.1 (continued) **Settler arrivals by birthplace, 2000-01 to 2010-11**

Birthplace	2000-01	2001-02	2002-03	2003-04	2004-05	2005-06	2006-07	2007-08	2008-09	2009-10	2010-11
<i>Northern Europe</i>											
Denmark	22	29	12	36	39	23	21	22	24	26	20
Finland	18	8	-	15	15	21	8	18	9	9	14
Greenland	1	-	-	-	-	-	-	-	-	-	-
Iceland	1	1	1	3	1	-	9	4	-	1	-
Norway	5	11	19	6	14	17	17	8	11	10	8
Sweden	17	31	45	32	47	20	29	39	45	37	30
Total	64	80	77	92	116	81	84	91	89	83	72
<i>Southern Europe</i>											
Andorra	-	-	-	-	-	-	-	1	-	-	-
Gibraltar	-	1	1	-	1	1	2	6	2	2	2
Italy	24	21	22	31	38	19	27	30	30	40	42
Malta	1	3	2	8	9	3	4	1	6	3	6
Portugal	12	4	7	3	15	11	7	14	10	16	8
Spain	10	13	22	18	13	23	22	21	32	29	21
Total	47	42	54	60	76	57	62	73	80	90	79
<i>South Eastern Europe</i>											
Albania	14	7	17	16	10	11	5	6	11	9	5
Bosnia & Herzegovina (b)	75	45	15	16	21	12	15	10	8	11	13
Bulgaria	27	13	12	12	21	10	22	15	17	12	20
Croatia (b)	141	37	31	12	10	15	12	24	25	13	13
Cyprus	5	6	1	5	4	9	5	2	9	7	3
Fmr Yugo Rep of Macedonia (b)	46	11	8	11	4	9	6	7	8	8	8
Greece	4	7	6	8	6	7	6	7	7	14	5
Moldova	-	1	-	1	3	-	2	1	-	1	1
Montenegro	-	-	-	-	-	-	-	-	5	1	1
Romania	24	42	49	38	36	74	54	48	46	38	37
Serbia (b)	-	-	-	-	-	-	5	25	21	22	19
Fmr Serbia & Montenegro (b)	309	210	139	86	81	75	80	57	79	61	38
Slovenia (b)	3	-	-	-	-	10	20	25	14	-	3
Total	648	379	278	205	196	232	232	227	250	197	166
<i>Eastern Europe</i>											
Belarus (c)	3	-	3	2	2	3	-	1	3	3	3
Czech Republic (d)	3	5	1	2	2	11	18	4	16	7	7
Estonia (c)	1	1	1	1	3	2	5	7	4	1	3
Former Czechoslovakia (d)	24	21	14	18	21	18	16	13	16	10	6
Hungary	10	15	16	30	27	25	30	45	72	52	28
Latvia (c)	7	3	2	-	2	7	2	1	2	7	7
Lithuania (c)	1	-	2	1	2	2	3	8	1	4	3
Poland	40	32	30	35	40	72	31	54	60	46	45
Russian Federation (c)	20	18	6	24	30	38	32	74	129	92	70
Slovakia (d)	2	2	-	2	4	6	7	6	11	10	10
Ukraine	16	13	18	19	12	14	33	23	25	31	31
Total	127	110	93	134	145	198	177	236	339	263	213
Total Europe	3 395	2 927	3 630	5 204	5 272	6 360	6 941	7 384	6 991	4 722	3 815

(b) As reliable data are not available for component countries prior to 1995-96, care should be taken when interpreting the data. Serbia and Montenegro was previously called the Federal Republic of Yugoslavia and since 1998-99 contains the Former Yugoslavia nfd. See page 64.

(c) As reliable data are not available for component countries prior to 1995-96, care should be taken when interpreting the data. See page 64.

(d) As reliable data are not available for component countries prior to 1995-96, care should be taken when interpreting the data. See page 64.

Queensland

Table 4.1 (continued) **Settler arrivals by birthplace, 2000-01 to 2010-11**

Birthplace	2000-01	2001-02	2002-03	2003-04	2004-05	2005-06	2006-07	2007-08	2008-09	2009-10	2010-11
North Africa & The Middle East											
<i>North Africa</i>											
Algeria	1	1	3	4	2	3	5	3	2	4	2
Egypt	33	19	55	57	69	50	45	56	72	42	53
Libya	1	-	1	2	-	3	2	-	3	4	3
Morocco	2	3	2	4	4	2	5	5	5	4	11
Sudan	121	140	440	606	708	590	330	130	110	98	84
Tunisia	3	1	1	-	-	3	1	1	-	8	-
North Africa nfd	-	1	-	-	-	-	-	-	-	-	-
Total	161	165	502	673	783	651	388	195	192	160	153
<i>The Middle East</i>											
Bahrain	2	2	7	-	-	3	4	4	14	5	4
Gaza Strip & West Bank	-	1	-	1	-	2	3	-	1	-	-
Iran	58	27	50	65	86	100	112	133	249	256	317
Iraq	70	74	170	45	43	64	82	108	192	138	190
Israel	10	18	25	22	28	19	46	16	16	29	24
Jordan	3	8	10	5	3	6	6	10	13	14	20
Kuwait	4	5	6	7	14	16	11	12	11	16	21
Lebanon	39	20	32	26	26	28	21	40	22	28	23
Oman	3	2	-	5	2	-	2	1	-	-	4
Qatar	-	1	1	1	-	1	-	4	1	2	1
Saudi Arabia	7	7	7	6	8	9	4	12	11	17	25
Syria	5	19	6	1	3	9	6	11	11	5	12
Turkey	9	31	30	38	29	24	24	37	28	20	19
United Arab Emirates	6	9	21	15	29	14	17	18	21	24	24
Yemen	-	2	4	18	1	-	6	3	-	1	-
Middle East nfd	1	2	3	1	3	1	1	-	1	1	-
Total	217	228	372	256	275	296	345	409	591	556	684
Total North Africa & the Middle East	378	393	874	929	1 058	947	733	604	783	716	837
Southeast Asia											
Brunei	6	1	1	6	2	3	3	7	8	4	2
Burma (Myanmar)	10	10	7	9	24	17	190	190	310	252	112
Cambodia	51	30	22	34	34	49	53	48	83	86	83
East Timor (e)	1	2	1	2	-	2	-	2	6	1	1
Indonesia (e)	193	235	199	216	143	176	157	180	165	168	151
Laos	19	4	2	4	36	15	17	8	17	11	204
Malaysia	207	208	226	375	303	313	278	500	418	441	288
Philippines	436	492	493	627	625	758	923	1 070	1 083	1 078	986
Singapore	148	147	249	283	370	293	159	211	189	196	191
Thailand	93	189	168	171	247	269	330	380	480	426	446
Vietnam	127	164	267	198	153	229	269	228	301	349	339
Total Southeast Asia	1 291	1 482	1 635	1 925	1 937	2 124	2 379	2 824	3 060	3 012	2 803

(e) East Timor previously recorded under Indonesia, care should be taken when interpreting the data.

Queensland

Table 4.1 (continued) **Settler arrivals by birthplace, 2000-01 to 2010-11**

Birthplace	2000-01	2001-02	2002-03	2003-04	2004-05	2005-06	2006-07	2007-08	2008-09	2009-10	2010-11
Northeast Asia											
China (f)	513	409	402	576	717	640	786	846	1 172	1 221	1 159
Hong Kong (g)	165	123	136	143	235	139	129	125	159	188	262
Japan	164	175	170	226	222	225	252	252	310	170	147
Korea	195	85	104	137	240	252	309	425	588	409	390
Macau (g)	3	1	1	2	4	2	1	-	1	1	-
Mongolia	-	-	-	1	4	1	4	3	3	4	8
Taiwan	1 065	695	517	378	350	292	303	314	248	249	217
Total Northeast Asia	2 105	1 488	1 330	1 463	1 772	1 551	1 784	1 965	2 481	2 242	2 183
Southern Asia											
Bangladesh	81	43	22	48	23	26	42	58	104	171	114
Bhutan	-	-	-	-	-	1	-	-	63	44	121
India	409	365	324	449	622	713	903	1 228	1 627	1 444	1 161
Maldives	-	1	-	-	-	4	-	1	2	-	1
Nepal	16	9	3	23	26	16	29	50	90	91	131
Pakistan	75	46	39	53	58	51	65	101	138	104	127
Sri Lanka	96	103	103	96	125	151	219	333	387	373	367
Total Southern Asia	677	567	491	669	854	962	1 258	1 771	2 411	2 227	2 022
Central Asia											
Afghanistan	11	48	50	52	123	157	105	98	114	104	115
Armenia (d)	-	-	-	-	-	1	-	-	-	3	1
Azerbaijan (d)	1	-	-	-	1	-	3	-	3	-	2
Georgia (d)	-	1	-	-	1	-	-	1	-	1	-
Kazakhstan (d)	3	-	3	4	3	9	6	17	16	10	7
Kyrgyz Republic (d)	-	4	6	1	5	1	5	6	-	-	3
Tajikistan (d)	-	-	-	-	1	-	1	1	-	-	-
Turkmenistan (d)	-	-	-	-	2	-	-	1	1	1	-
Uzbekistan (d)	-	-	1	5	10	9	2	2	4	-	-
Total Central Asia	15	53	60	62	146	177	122	126	138	119	128
Northern America											
Bermuda	2	-	3	1	-	2	-	-	-	2	-
Canada	166	142	154	117	159	189	181	180	212	220	193
USA	236	240	251	304	302	348	402	321	293	295	308
Total Northern America	404	382	408	422	461	539	583	501	505	517	501

(d) As reliable data are not available for component countries prior to 1995-96, care should be taken when interpreting the data. See page 64.

(f) Excluding SARs and Taiwan.

(g) SAR of China.

Queensland

Table 4.1 (continued) **Settler arrivals by birthplace, 2000-01 to 2010-11**

Birthplace	2000-01	2001-02	2002-03	2003-04	2004-05	2005-06	2006-07	2007-08	2008-09	2009-10	2010-11
South America, Central America & the Caribbean											
<i>South America</i>											
Argentina	7	17	29	27	30	24	13	13	8	9	18
Bolivia	4	1	4	2	-	2	-	4	-	4	1
Brazil	21	16	43	31	48	59	78	92	80	108	66
Chile	10	14	12	15	20	12	20	34	18	21	29
Colombia	13	18	27	38	29	25	39	61	53	96	62
Ecuador	-	1	1	1	4	4	3	3	7	6	3
Falkland Islands	-	-	-	-	1	1	1	1	-	-	-
Guyana	-	-	1	4	-	2	-	1	1	-	2
Paraguay	-	-	2	-	-	3	-	1	1	-	-
Peru	14	13	10	12	18	31	26	24	39	27	32
Suriname	-	-	1	-	-	-	2	-	-	-	-
Uruguay	-	4	8	5	3	2	1	3	1	1	6
Venezuela	8	4	4	19	19	22	12	30	25	28	30
South America nfd	-	-	-	-	-	-	-	-	-	-	1
Total	77	88	142	154	172	187	195	267	233	300	250
<i>Central America</i>											
Belize	-	-	-	1	-	-	-	-	-	1	5
Costa Rica	-	-	-	-	-	2	1	3	-	2	4
El Salvador	5	5	3	1	7	3	3	3	11	11	12
Guatemala	1	2	-	1	1	-	2	-	3	1	-
Honduras	-	3	-	-	-	-	1	1	4	-	1
Mexico	9	5	10	7	19	10	17	27	18	24	33
Nicaragua	-	-	-	-	-	2	3	3	-	2	3
Panama	2	1	-	1	1	1	-	2	1	1	4
Central America nfd	-	-	-	-	-	-	-	-	-	1	-
Total	17	16	13	11	28	18	27	39	37	43	62
<i>The Caribbean</i>											
Antigua & Barbuda	-	-	-	-	-	1	1	-	-	-	-
Aruba	-	-	-	-	-	-	-	-	1	-	-
Bahamas	1	-	1	2	1	-	1	1	-	1	1
Barbados	6	-	1	2	-	3	2	1	3	1	1
Cayman Islands	-	1	-	1	1	1	2	2	1	1	-
Cuba	2	3	-	-	4	2	6	6	2	4	10
Dominica	-	-	-	-	2	-	-	1	-	-	-
Dominican Republic	3	1	2	1	4	1	-	1	1	-	3
Grenada	-	-	1	1	1	1	-	-	-	-	-
Guadeloupe	-	-	-	-	-	-	-	-	-	-	1
Haiti	-	-	-	1	-	-	-	-	1	-	-
Jamaica	2	1	2	5	7	3	3	4	9	1	4
Montserrat	-	-	-	-	-	-	-	1	-	-	1
Netherlands Antilles	-	1	-	-	-	-	-	-	-	1	-
Puerto Rico	1	-	1	-	-	1	1	1	1	2	-
St Lucia	-	-	-	-	1	-	1	1	-	-	-
Trinidad & Tobago	3	3	1	6	3	2	5	3	3	2	1
Virgin Islands British	-	-	-	-	1	-	-	-	-	1	-
Caribbean nfd	-	-	-	-	1	-	1	-	-	-	-
Total	18	10	9	19	26	15	23	22	22	14	22
Total South America, Central America & The Caribbean	112	114	164	184	226	220	245	328	292	357	334

Queensland

Table 4.1 (continued) **Settler arrivals by birthplace, 2000-01 to 2010-11**

Birthplace	2000-01	2001-02	2002-03	2003-04	2004-05	2005-06	2006-07	2007-08	2008-09	2009-10	2010-11
Sub-Saharan Africa											
<i>Central & West Africa</i>											
Benin	-	-	-	-	1	1	3	2	-	1	2
Burkina Faso	-	-	-	-	-	-	-	2	-	-	-
Cameroon	-	-	1	-	-	2	-	7	5	9	11
Central African Republic	-	-	-	-	-	-	-	5	-	-	-
Chad	-	-	-	-	-	1	4	2	-	1	1
Congo	-	-	11	1	29	8	16	11	7	25	22
Congo Democratic Republic	1	4	1	-	3	17	84	80	58	106	82
Cote D'Ivoire	-	-	1	-	11	3	14	11	13	12	3
Gabon	1	1	-	-	-	-	-	-	-	-	-
Gambia	-	-	-	-	2	1	1	1	-	1	-
Ghana	13	6	3	8	2	15	7	25	23	18	9
Guinea	-	-	6	1	24	18	19	7	5	18	7
Liberia	-	6	12	21	110	76	44	33	29	50	12
Mali	-	-	-	-	-	-	-	-	-	1	-
Niger	-	-	-	-	-	4	1	-	-	-	1
Nigeria	16	13	9	19	6	23	24	35	24	31	31
Senegal	-	-	-	-	-	1	-	2	1	-	-
Sierra Leone	4	33	10	13	107	44	27	13	19	68	17
Togo	-	-	-	-	7	1	10	17	5	3	1
Total	35	63	54	63	302	215	254	253	189	344	199
<i>Southern & East Africa</i>											
Angola	1	1	2	1	1	-	2	-	4	1	-
Botswana	3	2	6	4	5	9	5	2	18	5	8
Burundi	3	-	-	15	55	101	122	59	36	25	17
Djibouti	2	1	1	-	-	-	-	1	-	3	2
Eritrea (h)	7	18	7	7	7	41	26	14	23	80	48
Ethiopia (h)	35	45	36	53	60	54	42	38	97	73	77
Kenya	25	51	66	78	114	82	94	46	86	70	50
Lesotho	-	1	1	-	-	1	1	-	-	3	2
Madagascar	2	2	-	1	-	1	1	2	-	1	4
Malawi	2	16	12	12	7	-	5	8	8	2	9
Mauritius	3	4	6	7	20	26	10	22	31	18	4

(h) As reliable data are not available for component countries prior to 1995-96, care should be taken when interpreting the data. See page 64.

Queensland

Table 4.1 (continued) **Settler arrivals by birthplace, 2000-01 to 2010-11**

Birthplace	2000-01	2001-02	2002-03	2003-04	2004-05	2005-06	2006-07	2007-08	2008-09	2009-10	2010-11
<i>Southern & East Africa</i> (continued)											
Mozambique	5	6	4	8	6	3	8	6	10	12	5
Namibia	6	6	11	5	8	9	8	9	18	17	14
Reunion	-	-	-	1	-	-	-	-	-	1	-
Rwanda	-	2	-	22	5	24	28	16	21	42	37
St Helena	-	-	-	-	1	-	-	-	-	1	-
Seychelles	-	6	2	2	4	-	3	1	5	5	1
Somalia	14	7	12	11	18	53	22	27	47	168	115
South Africa	1 097	1 212	1 064	1 304	1 048	995	1 185	1 570	2 084	1 530	1 090
Swaziland	1	1	1	1	2	3	2	1	3	3	-
Tanzania	2	3	5	14	29	85	93	75	18	29	17
Uganda	3	7	10	21	23	43	58	16	15	28	21
Zambia	22	27	19	27	30	22	21	29	33	35	42
Zimbabwe	223	367	346	416	308	214	243	281	247	169	207
Total	1 456	1 785	1 611	2 010	1 751	1 766	1 979	2 223	2 804	2 321	1 770
Total											
Sub-Saharan Africa	1 491	1 848	1 665	2 073	2 053	1 981	2 233	2 476	2 993	2 665	1 969
Supplementary codes (i)											
Fmr USSR	102	94	100	109	108	118	119	97	103	119	137
Total	102	94	100	109	108	118	119	97	103	119	137
Not stated	6	-	7	15	1	21	15	42	16	4	2
Total all countries	19 535	15 825	16 182	20 284	22 660	24 862	28 640	32 496	33 029	24 946	25 827

(i) Supplementary codes cannot be classified to any major region in the Standard Australian Classification of Countries (SACC). This may lead to under reporting of their component countries in the rest of the table, care should be taken when interpreting the data.

South Australia

Table 5.1 Settler arrivals by birthplace, 2000-01 to 2010-11

Birthplace	2000-01	2001-02	2002-03	2003-04	2004-05	2005-06	2006-07	2007-08	2008-09	2009-10	2010-11
Oceania											
<i>Australia & External Territories (a)</i>	11	11	12	6	15	16	30	47	54	63	46
<i>New Zealand</i>	482	339	232	266	327	373	397	508	479	354	412
<i>Melanesia</i>											
Papua New Guinea	1	1	1	6	1	3	-	2	7	10	5
Solomon Islands	-	-	-	-	1	-	3	-	1	2	4
Vanuatu	-	-	4	-	-	-	1	-	-	-	1
<i>Total</i>	1	1	5	6	2	3	4	2	8	12	10
<i>Micronesia</i>											
Kiribati	-	-	-	-	-	-	-	1	1	-	-
Northern Mariana Islands	-	-	-	-	-	-	-	-	-	2	-
<i>Total</i>	-	-	-	-	-	-	-	1	1	2	-
<i>Polynesia (excluding Hawaii)</i>											
Cook Islands	1	-	2	-	-	1	1	5	3	5	5
Fiji	16	29	22	26	28	28	32	46	51	28	31
Niue	-	-	-	-	-	-	1	3	1	-	-
Samoa	4	4	2	2	8	3	6	4	14	12	6
Samoa American	1	1	-	-	-	-	-	1	-	-	-
Tokelau	-	-	-	-	-	-	-	1	-	-	-
Tonga	2	5	1	-	2	3	3	7	4	3	3
<i>Total</i>	24	39	27	28	38	35	43	67	73	48	45
Total Oceania	518	390	276	306	382	427	474	625	615	479	513
Europe											
<i>United Kingdom & Ireland</i>											
UK	495	572	785	1 269	1 725	3 009	2 535	2 451	2 291	1 897	864
Ireland	12	16	18	36	44	64	70	56	55	84	37
<i>Total</i>	507	588	803	1 305	1 769	3 073	2 605	2 507	2 346	1 981	901
<i>Western Europe</i>											
Austria	4	4	7	2	7	8	7	2	3	2	1
Belgium	5	1	8	2	4	4	10	11	9	14	15
France	16	16	24	17	23	18	11	13	9	11	10
Germany	35	48	28	48	58	76	74	76	80	69	33
Luxembourg	1	-	-	-	-	-	-	-	-	-	-
Monaco	-	1	-	-	-	-	-	-	-	-	-
Netherlands	20	19	22	21	34	34	46	58	37	47	17
Switzerland	5	10	10	7	11	14	4	11	9	6	4
<i>Total</i>	86	99	99	97	137	154	152	171	147	149	80

(a) The Australia component consists of persons born in Australia who have settled overseas and returned.

South Australia

Table 5.1 (continued) **Settler arrivals by birthplace, 2000-01 to 2010-11**

Birthplace	2000-01	2001-02	2002-03	2003-04	2004-05	2005-06	2006-07	2007-08	2008-09	2009-10	2010-11
<i>Northern Europe</i>											
Denmark	11	11	4	-	9	5	11	3	2	5	-
Finland	-	1	3	2	-	3	4	1	1	2	-
Iceland	-	-	-	-	-	-	-	1	-	-	-
Norway	2	1	2	7	7	4	6	3	9	2	4
Sweden	7	5	10	10	6	16	8	19	14	8	6
Total	20	18	19	19	22	28	29	27	26	17	10
<i>Southern Europe</i>											
Gibraltar	-	-	-	-	-	-	-	2	-	-	-
Italy	9	10	3	8	26	11	12	8	24	21	10
Malta	1	2	1	2	-	5	1	1	-	3	-
Portugal	1	1	1	2	2	-	3	8	-	1	-
Spain	4	5	6	4	2	3	11	6	1	10	7
Total	15	18	11	16	30	19	27	25	25	35	17
<i>South Eastern Europe</i>											
Albania	5	14	20	9	12	7	12	19	19	16	6
Bosnia & Herzegovina (b)	81	38	14	16	5	7	7	4	10	7	3
Bulgaria	12	5	7	13	4	5	9	8	4	12	7
Croatia (b)	117	58	16	5	8	2	4	2	3	5	11
Cyprus	4	2	1	4	6	1	3	4	5	-	2
Fmr Yugo Rep of Macedonia (b)	6	5	3	-	-	2	5	1	4	1	-
Greece	1	10	6	4	7	10	3	8	3	9	10
Moldova	-	-	-	15	1	5	2	12	3	3	-
Montenegro (b)	-	-	-	-	-	-	1	2	-	-	-
Romania	20	25	19	27	20	14	39	18	20	26	9
Serbia (b)	-	-	-	-	-	-	2	11	10	19	14
Fmr Serbia & Montenegro (b)	163	198	161	62	34	40	47	25	12	16	11
Slovenia (b)	-	2	-	-	-	-	1	-	1	2	1
Total	409	357	247	155	97	93	135	114	94	116	74
<i>Eastern Europe</i>											
Belarus (c)	-	-	-	-	2	2	6	1	3	3	-
Czech Republic (d)	-	2	-	-	-	5	3	-	3	2	-
Estonia	-	-	5	2	-	1	2	-	-	2	-
Former Czechoslovakia (d)	4	6	9	13	9	7	3	3	8	2	1
Hungary	5	5	2	7	10	4	12	3	2	23	7
Latvia (c)	2	4	2	4	2	3	5	1	3	4	1
Lithuania (c)	-	2	2	-	6	1	3	6	2	-	-
Poland	8	31	33	27	45	32	42	34	38	43	25
Russian Federation (c)	1	6	4	24	24	40	32	47	63	53	26
Slovakia (d)	-	2	1	2	1	1	2	1	1	2	3
Ukraine	8	9	9	17	14	18	13	18	16	10	10
Total	28	67	67	96	113	114	123	114	139	144	73
Total Europe	1 065	1 147	1 246	1 688	2 168	3 481	3 071	2 958	2 777	2 442	1 155

(b) As reliable data are not available for component countries prior to 1995-96, care should be taken when interpreting the data. Serbia and Montenegro was previously called the Federal Republic of Yugoslavia and since 1998-99 contains the Former Yugoslavia nfd. See page 64.

(c) As reliable data are not available for component countries prior to 1995-96, care should be taken when interpreting the data. See page 64.

(d) As reliable data are not available for component countries prior to 1995-96, care should be taken when interpreting the data. See page 64.

South Australia

Table 5.1 (continued) **Settler arrivals by birthplace, 2000-01 to 2010-11**

Birthplace	2000-01	2001-02	2002-03	2003-04	2004-05	2005-06	2006-07	2007-08	2008-09	2009-10	2010-11
North Africa & The Middle East											
<i>North Africa</i>											
Algeria	11	2	5	-	1	-	1	1	-	1	-
Egypt	6	7	29	19	24	37	39	22	34	79	51
Libya	-	-	-	3	-	-	1	-	1	1	-
Morocco	-	-	2	3	3	1	5	2	-	-	1
Sudan	74	89	188	363	407	248	143	79	87	31	41
Tunisia	-	-	2	-	-	-	-	1	-	2	-
Total	91	98	226	388	435	286	189	105	122	114	93
<i>The Middle East</i>											
Bahrain	-	-	1	-	2	2	-	-	1	-	1
Gaza Strip & West Bank	-	1	-	-	-	-	-	-	-	-	-
Iran	119	53	71	70	69	70	143	119	184	133	137
Iraq	44	51	115	63	46	64	54	46	91	65	145
Israel	-	3	7	3	13	7	5	5	9	18	14
Jordan	9	1	5	4	9	8	4	1	18	12	6
Kuwait	2	-	3	-	2	2	6	10	12	11	12
Lebanon	22	20	29	31	24	41	38	31	28	19	19
Oman	-	1	1	-	-	4	-	-	2	3	-
Qatar	-	-	-	-	-	-	4	1	2	1	2
Saudi Arabia	1	1	1	-	2	4	5	5	2	2	8
Syria	6	11	10	8	6	7	9	9	15	6	5
Turkey	4	19	12	16	20	14	9	10	9	17	13
United Arab Emirates	-	9	7	3	11	8	12	9	7	13	7
Yemen	4	-	3	2	-	-	2	-	1	-	-
Middle East nfd	-	-	1	-	-	2	-	8	-	1	1
Total	211	170	266	200	204	233	291	254	381	301	370
Total North Africa & the Middle East	302	268	492	588	639	519	480	359	503	415	463
Southeast Asia											
Brunei	1	1	1	4	-	3	1	2	1	1	1
Burma (Myanmar)	1	1	12	3	5	11	75	119	119	114	80
Cambodia	25	28	49	31	61	52	63	59	65	85	63
East Timor	-	-	-	-	-	-	2	-	1	4	-
Indonesia	37	65	53	47	29	64	59	56	57	56	57
Laos	-	1	-	-	4	6	6	2	5	1	2
Malaysia	80	58	91	132	112	154	183	191	139	331	137
Philippines	123	126	134	147	161	285	343	372	362	519	376
Singapore	26	61	68	63	94	129	116	88	81	60	36
Thailand	35	49	50	57	50	62	93	83	108	99	111
Vietnam	71	102	130	110	97	155	193	145	179	189	182
Total Southeast Asia	399	492	588	594	613	921	1 134	1 117	1 117	1 459	1 045

South Australia

Table 5.1 (continued) **Settler arrivals by birthplace, 2000-01 to 2010-11**

Birthplace	2000-01	2001-02	2002-03	2003-04	2004-05	2005-06	2006-07	2007-08	2008-09	2009-10	2010-11
Northeast Asia											
China (f)	123	134	113	208	513	879	1 078	1 060	905	1 292	715
Hong Kong (g)	28	10	18	31	48	44	50	42	36	53	41
Japan	31	11	29	32	40	40	64	50	37	49	23
Korea	40	25	34	35	103	163	264	229	194	324	227
Macau (g)	-	-	2	1	-	2	-	1	-	1	-
Mongolia	-	-	-	-	-	-	2	-	4	3	1
Taiwan	22	18	16	18	31	30	46	37	35	30	40
Total Northeast Asia	244	198	212	325	735	1 158	1 504	1 419	1 211	1 752	1 047
Southern Asia											
Bangladesh	18	3	1	10	17	16	77	90	122	354	189
Bhutan	-	-	-	-	-	-	-	8	185	155	234
India	126	118	138	243	404	909	1 416	1 657	1 578	1 983	841
Maldives	-	3	-	-	1	-	1	6	1	3	-
Nepal	2	5	4	5	5	10	10	37	74	105	148
Pakistan	36	22	12	53	46	55	69	78	68	111	106
Sri Lanka	44	35	23	28	45	85	72	153	145	448	223
Total Southern Asia	226	186	178	339	518	1 075	1 645	2 029	2 173	3 159	1 741
Central Asia											
Afghanistan	3	36	57	98	100	373	455	322	186	235	364
Armenia (d)	-	-	5	4	-	-	-	1	1	1	-
Azerbaijan (d)	-	-	-	3	-	-	-	-	1	1	-
Georgia (d)	1	-	-	-	-	-	1	-	-	2	-
Kazakhstan (d)	1	4	1	2	11	-	7	4	6	4	3
Kyrgyz Republic (d)	-	-	-	3	-	4	3	-	7	-	-
Tajikistan (d)	-	-	-	-	-	1	-	-	-	-	-
Turkmenistan (d)	-	-	-	-	-	-	-	1	-	-	-
Uzbekistan (d)	8	3	-	3	6	41	8	15	10	15	2
Total Central Asia	13	43	63	113	117	419	474	343	211	258	369
Northern America											
Bermuda	-	-	-	-	1	-	-	-	-	-	-
Canada	42	22	46	38	24	18	46	44	64	36	24
USA	57	50	78	97	68	95	89	85	80	74	64
Total Northern America	99	72	124	135	93	113	135	129	144	110	88

(d) As reliable data are not available for component countries prior to 1995-96, care should be taken when interpreting the data. See page 64.

(f) Excluding SARs and Taiwan.

(g) SAR of China.

South Australia

Table 5.1 (continued) **Settler arrivals by birthplace, 2000-01 to 2010-11**

Birthplace	2000-01	2001-02	2002-03	2003-04	2004-05	2005-06	2006-07	2007-08	2008-09	2009-10	2010-11
South America, Central America & the Caribbean											
<i>South America</i>											
Argentina	4	8	8	14	33	15	8	8	20	15	4
Bolivia	1	-	-	-	1	2	-	4	6	3	6
Brazil	3	4	9	9	12	27	37	57	13	60	17
Chile	1	12	2	3	7	6	7	2	11	10	2
Colombia	4	1	4	7	1	11	14	23	21	34	32
Ecuador	-	2	2	-	4	1	-	4	1	5	-
Guyana	1	-	1	1	-	1	1	1	1	-	1
Paraguay	-	-	-	1	-	-	-	-	-	-	-
Peru	2	2	5	8	9	20	35	18	10	20	4
Suriname	-	-	1	-	-	1	-	-	-	2	-
Uruguay	-	-	1	-	1	-	1	1	1	2	-
Venezuela	2	-	1	2	9	13	34	56	17	68	30
Total	18	29	34	45	77	97	137	174	101	219	96
<i>Central America</i>											
Belize	-	-	-	-	-	-	-	-	-	-	1
Costa Rica	-	-	-	-	-	3	-	-	-	-	-
El Salvador	1	1	-	1	-	2	1	5	6	4	4
Guatemala	-	-	-	-	-	-	5	-	-	2	2
Honduras	-	-	-	-	-	1	-	-	-	-	-
Mexico	1	-	2	3	3	19	22	79	34	37	33
Nicaragua	-	-	-	-	-	-	-	1	-	1	-
Panama	-	-	-	-	-	1	-	-	2	-	-
Total	2	1	2	4	3	26	28	85	42	44	40
<i>The Caribbean</i>											
Bahamas	-	-	-	-	1	-	-	-	-	-	-
Barbados	-	-	-	-	-	-	1	-	-	-	-
Cayman Islands	1	-	-	-	-	-	-	-	-	-	-
Cuba	-	1	3	1	-	-	2	-	-	5	-
Dominican Republic	1	-	-	-	-	-	-	-	1	-	-
Jamaica	2	-	1	-	1	1	2	2	-	-	1
Montserrat	-	-	-	-	-	1	-	-	-	-	-
Netherlands Antilles	-	-	1	-	-	-	-	-	-	-	-
St Kitts & Nevis	-	-	1	-	-	-	-	-	-	-	-
St Lucia	-	-	-	-	-	1	-	-	-	-	2
Trinidad & Tobago	1	-	-	-	-	3	1	1	1	2	1
Total	5	1	6	1	2	6	6	3	2	7	4
Total South America, Central America & The Caribbean	25	31	42	50	82	129	171	262	145	270	140

South Australia

Table 5.1 (continued) **Settler arrivals by birthplace, 2000-01 to 2010-11**

Birthplace	2000-01	2001-02	2002-03	2003-04	2004-05	2005-06	2006-07	2007-08	2008-09	2009-10	2010-11
Sub-Saharan Africa											
<i>Central & West Africa</i>											
Benin	-	-	-	-	-	-	-	-	-	1	1
Burkina Faso	-	-	-	-	-	-	-	-	1	-	-
Cameroon	-	-	-	1	1	-	2	2	-	-	7
Central African Republic	-	-	-	-	1	-	-	-	-	1	2
Congo	1	1	1	11	86	6	12	1	3	8	11
Congo Democratic Republic	-	-	-	1	-	15	124	61	28	115	55
Cote D'Ivoire	1	-	-	-	13	11	18	6	8	31	3
Ghana	1	2	1	1	19	18	16	3	11	11	10
Guinea	-	-	2	1	20	9	22	16	9	29	1
Liberia	1	13	45	20	144	75	102	18	41	64	8
Mali	-	-	-	-	-	-	-	-	-	1	-
Niger	-	-	-	1	-	-	-	-	-	-	1
Nigeria	1	11	3	5	5	15	10	5	13	24	8
Senegal	-	-	1	-	-	1	3	-	-	1	-
Sierra Leone	9	22	-	3	74	19	26	14	36	30	5
Togo	-	-	-	-	-	-	6	10	9	9	3
Total	14	49	53	44	363	169	341	136	159	325	115
<i>Southern & East Africa</i>											
Angola	-	-	-	-	-	-	-	1	-	-	-
Botswana	-	2	2	2	-	1	2	2	1	7	5
Burundi	-	-	-	8	46	82	21	30	35	16	11
Eritrea (h)	16	3	10	9	6	4	9	13	11	7	8
Ethiopia (h)	23	31	22	58	57	24	30	23	36	53	85
Kenya	9	31	21	57	89	79	57	23	39	58	41
Lesotho	-	-	-	-	-	-	-	-	1	-	-
Madagascar	1	-	-	-	-	1	-	-	1	-	-
Malawi	-	1	-	-	6	-	7	6	2	3	2
Mauritius	-	3	6	6	6	6	4	2	10	6	7
Mozambique	1	-	1	-	-	-	-	-	-	1	1
Namibia	1	-	7	-	5	5	1	-	1	1	5
Rwanda	-	-	-	1	7	3	8	4	10	3	8
Seychelles	-	-	-	-	-	1	-	-	2	1	-
Somalia	6	18	1	19	54	17	15	12	21	30	14
South Africa	153	241	209	317	253	263	290	245	329	389	195
Swaziland	-	-	-	2	-	-	-	-	1	-	-
Tanzania	-	-	-	5	25	64	17	22	9	4	21
Uganda	-	9	12	7	12	14	34	28	19	11	17
Zambia	2	1	2	8	5	10	21	5	7	8	17
Zimbabwe	8	29	24	39	37	53	55	38	42	39	31
Southern & East Africa nfd	-	-	-	-	-	-	-	1	-	-	-
Total	220	369	317	538	608	627	571	455	577	637	468
Total											
Sub-Saharan Africa	234	418	370	582	971	796	912	591	736	962	583
Supplementary codes (i)											
Fmr USSR	58	71	65	53	44	61	58	45	62	69	60
Total	58	71	65	53	44	61	58	45	62	69	60
Not stated	-	-	1	-	2	-	3	19	1	2	-
Total all countries	3 183	3 316	3 657	4 773	6 364	9 099	10 061	9 896	9 695	11 377	7 204

(h) As reliable data are not available for component countries prior to 1995-96, care should be taken when interpreting the data. See page 64.

(i) Supplementary codes cannot be classified to any major region in the Standard Australian Classification of Countries (SACC). This may lead to under reporting of their component countries in the rest of the table, care should be taken when interpreting the data.

Western Australia

Table 6.1 Settler arrivals by birthplace, 2000-01 to 2010-11

Birthplace	2000-01	2001-02	2002-03	2003-04	2004-05	2005-06	2006-07	2007-08	2008-09	2009-10	2010-11
Oceania											
<i>Australia & External Territories (a)</i>	43	37	38	54	72	57	71	110	128	119	107
<i>New Zealand</i>	1 669	1 127	833	1 046	1 588	1 873	2 516	3 710	3 794	2 486	4 010
<i>Melanesia</i>											
New Caledonia	-	-	1	-	-	-	-	1	1	1	-
Papua New Guinea	-	1	2	1	1	3	5	5	20	18	20
Solomon Islands	2	-	-	-	1	2	1	2	2	-	-
Vanuatu	-	-	1	-	1	-	-	3	2	4	4
<i>Total</i>	2	1	4	1	3	5	6	11	25	23	24
<i>Micronesia</i>											
Kiribati	-	2	1	-	-	-	1	-	2	2	-
Nauru	3	-	-	-	1	-	-	-	-	-	-
<i>Total</i>	3	2	1	-	1	-	1	-	2	2	-
<i>Polynesia (excluding Hawaii)</i>											
Cook Islands	-	1	-	3	-	1	3	33	59	24	48
Fiji	11	10	6	6	11	17	11	45	69	49	92
French Polynesia	-	-	1	-	-	2	-	-	1	-	1
Niue	1	-	-	2	-	2	1	6	5	3	17
Samoa	13	1	4	8	12	4	7	51	91	59	89
Samoa American	-	-	-	-	-	1	-	2	-	-	-
Tokelau	-	-	-	-	-	1	-	1	1	1	7
Tonga	2	1	5	3	2	3	3	10	10	7	17
Tuvalu	-	2	-	-	-	-	-	-	2	-	-
Polynesia (excl. Hawaii)	-	-	-	-	-	-	-	-	-	2	-
<i>Total</i>	27	15	16	22	25	31	25	148	238	145	271
Total Oceania	1 744	1 182	892	1 123	1 689	1 966	2 619	3 979	4 187	2 775	4 412
Europe											
<i>United Kingdom & Ireland</i>											
UK	2 147	2 112	3 319	5 120	5 106	6 717	7 286	7 125	6 212	4 086	2 925
Ireland	138	92	106	174	159	218	297	325	408	416	350
<i>Total</i>	2 285	2 204	3 425	5 294	5 265	6 935	7 583	7 450	6 620	4 502	3 275
<i>Western Europe</i>											
Austria	9	11	11	17	17	10	22	13	10	21	7
Belgium	7	6	25	8	21	10	12	16	13	7	17
France	18	29	34	34	40	45	38	39	42	42	36
Germany	110	62	101	114	120	127	122	176	134	181	110
Liechtenstein	-	2	-	-	-	-	-	-	-	-	-
Luxembourg	-	-	-	-	-	1	3	1	-	4	-
Monaco	-	-	-	-	-	1	-	-	-	-	-
Netherlands	63	80	39	73	93	73	108	113	80	69	43
Switzerland	32	31	47	34	39	47	33	58	40	33	34
<i>Total</i>	239	221	257	280	330	314	338	416	319	357	247

(a) The Australia component consists of persons born in Australia who have settled overseas and returned.

Western Australia

Table 6.1 (continued) Settler arrivals by birthplace, 2000-01 to 2010-11

Birthplace	2000-01	2001-02	2002-03	2003-04	2004-05	2005-06	2006-07	2007-08	2008-09	2009-10	2010-11
<i>Northern Europe</i>											
Denmark	11	18	11	14	7	15	16	16	11	7	9
Faroe Islands	-	-	1	-	-	-	1	-	-	-	-
Finland	4	5	4	3	5	3	3	8	3	11	2
Greenland	-	-	-	-	-	1	-	-	-	-	-
Iceland	-	-	-	-	1	-	-	1	1	2	1
Norway	4	1	10	11	3	7	4	5	3	8	4
Sweden	8	13	15	34	22	13	15	21	22	13	10
Total	27	37	41	62	38	39	39	51	40	41	26
<i>Southern Europe</i>											
Gibraltar	1	-	-	-	1	1	1	1	1	2	2
Italy	33	48	20	35	36	34	38	31	40	27	26
Malta	4	-	4	8	7	3	8	12	6	3	5
Portugal	4	10	9	14	16	9	12	16	18	12	20
Spain	7	5	8	10	21	14	20	8	13	13	20
Total	49	63	41	67	81	61	79	68	78	57	73
<i>South Eastern Europe</i>											
Albania	7	3	2	7	6	17	8	3	4	7	1
Bosnia & Herzegovina (b)	91	39	11	13	11	11	14	17	10	22	8
Bulgaria	15	19	8	12	7	8	6	15	15	18	8
Croatia (b)	191	76	62	27	10	5	12	15	19	15	5
Cyprus	1	1	3	4	6	8	7	7	3	2	4
Fmr Yugo Rep of Macedonia (b)	69	41	39	34	27	34	26	64	45	33	23
Greece	3	6	6	4	7	3	1	4	11	3	6
Moldova	-	-	2	-	-	-	-	1	1	-	2
Montenegro (b)	-	-	-	-	-	-	-	1	-	2	1
Romania	29	19	32	40	32	22	41	47	26	28	26
Serbia (b)	-	-	-	-	-	-	2	24	25	29	17
Fmr Serbia & Montenegro (b)	233	197	204	91	59	67	70	40	31	23	23
Slovenia (b)	2	1	1	1	1	1	3	8	4	1	1
Total	641	402	370	233	166	176	190	246	194	183	125
<i>Eastern Europe</i>											
Belarus (c)	1	-	-	2	1	-	5	4	2	5	2
Czech Republic (d)	-	2	1	-	5	5	1	8	13	4	2
Estonia (c)	1	-	-	-	3	1	2	3	-	2	-
Former Czechoslovakia (d)	15	7	7	9	15	14	10	13	8	9	5
Hungary	5	5	6	9	6	10	12	11	9	14	25
Latvia (c)	-	-	2	1	3	1	-	1	2	9	2
Lithuania (c)	-	-	1	1	3	4	3	5	8	3	5
Poland	27	27	32	35	36	33	39	37	36	32	42
Russian Federation (c)	8	-	7	16	17	34	22	32	62	42	57
Slovakia (d)	-	-	1	2	-	3	4	4	3	4	3
Ukraine	9	6	9	3	13	15	6	9	16	19	13
Total	66	47	66	78	102	120	104	127	159	143	156
Total Europe	3 307	2 974	4 200	6 014	5 982	7 645	8 333	8 358	7 410	5 283	3 902

(b) As reliable data are not available for component countries prior to 1995-96, care should be taken when interpreting the data. Serbia and Montenegro was previously called the Federal Republic of Yugoslavia and since 1998-99 contains the Former Yugoslavia nfd. See page 64.

(c) As reliable data are not available for component countries prior to 1995-96, care should be taken when interpreting the data. See page 64.

(d) As reliable data are not available for component countries prior to 1995-96, care should be taken when interpreting the data. See page 64.

Western Australia

Table 6.1 (continued) **Settler arrivals by birthplace, 2000-01 to 2010-11**

Birthplace	2000-01	2001-02	2002-03	2003-04	2004-05	2005-06	2006-07	2007-08	2008-09	2009-10	2010-11
North Africa & The Middle East											
<i>North Africa</i>											
Algeria	7	5	2	2	-	2	-	4	3	3	4
Egypt	29	18	30	44	69	50	64	28	42	60	35
Libya	2	-	3	-	2	2	3	3	2	3	4
Morocco	3	-	3	5	3	2	4	5	3	3	8
Sudan	195	144	239	500	789	441	380	203	162	158	144
Tunisia	-	-	2	1	-	3	-	1	-	4	2
Total	236	167	279	552	863	500	451	244	212	231	197
<i>The Middle East</i>											
Bahrain	1	8	-	1	5	3	2	2	5	5	1
Gaza Strip & West Bank	-	-	-	-	1	-	-	-	1	-	-
Iran	108	31	103	124	120	91	88	129	298	220	262
Iraq	94	90	255	97	59	89	76	180	304	197	251
Israel	14	10	17	20	24	24	33	19	24	25	14
Jordan	16	3	10	7	6	11	20	10	7	18	14
Kuwait	10	4	43	14	14	18	2	16	15	9	23
Lebanon	10	18	27	24	30	20	15	18	33	15	27
Oman	1	7	3	1	1	5	4	3	2	7	5
Qatar	1	7	1	3	1	-	6	5	4	7	1
Saudi Arabia	8	1	3	5	7	9	11	13	15	25	11
Syria	10	1	10	13	6	4	8	9	16	19	17
Turkey	18	49	44	27	28	21	22	26	21	21	39
United Arab Emirates	6	12	18	25	17	30	33	41	42	33	36
Yemen	1	1	-	-	-	-	1	1	5	1	1
Middle East nfd	2	3	-	-	2	3	2	1	1	3	2
Total	300	245	534	361	321	328	323	473	793	605	704
Total North Africa & the Middle East	536	412	813	913	1 184	828	774	717	1 005	836	901
Southeast Asia											
Brunei	28	27	26	28	27	19	24	21	16	8	9
Burma (Myanmar)	44	55	40	43	75	167	266	360	456	363	177
Cambodia	10	12	19	23	21	27	32	31	60	72	39
East Timor (e)	-	1	2	1	6	7	2	1	-	1	4
Indonesia (e)	1 095	1 132	705	534	384	300	307	375	346	303	264
Laos	1	-	2	-	8	6	6	11	5	5	3
Malaysia	473	473	825	903	756	751	702	896	1 014	1 012	820
Philippines	127	164	156	228	246	240	345	488	450	771	650
Singapore	419	553	605	697	1 076	936	582	593	533	480	280
Thailand	82	175	167	154	185	211	322	368	494	505	385
Vietnam	105	136	174	166	147	173	228	179	204	212	244
Total Southeast Asia	2 384	2 728	2 721	2 777	2 931	2 837	2 816	3 323	3 578	3 732	2 875

(e) East Timor previously recorded under Indonesia, care should be taken when interpreting the data. See page 64.

Western Australia

Table 6.1 (continued) **Settler arrivals by birthplace, 2000-01 to 2010-11**

Birthplace	2000-01	2001-02	2002-03	2003-04	2004-05	2005-06	2006-07	2007-08	2008-09	2009-10	2010-11
Northeast Asia											
China (f)	239	231	224	319	362	423	477	612	759	790	844
Hong Kong (g)	74	62	69	78	90	66	77	79	62	76	124
Japan	56	52	65	80	83	70	92	95	87	77	54
Korea	57	42	30	45	58	70	80	106	142	127	131
Macau (g)	3	2	4	3	2	1	2	1	-	1	3
Mongolia	1	-	-	1	-	4	4	10	6	4	1
Taiwan	52	48	35	26	25	29	14	44	44	38	59
Total Northeast Asia	482	437	427	552	620	663	746	947	1 100	1 113	1 216
Southern Asia											
Bangladesh	22	13	13	14	20	33	48	66	102	131	70
Bhutan	-	-	-	-	-	1	-	-	16	3	9
India	328	298	390	401	567	558	853	1 361	1 892	1 942	1 418
Maldives	-	-	-	6	4	3	-	9	7	5	-
Nepal	8	6	3	10	7	9	20	18	34	47	30
Pakistan	45	28	58	65	61	51	62	79	132	108	118
Sri Lanka	97	83	94	97	149	129	212	289	423	515	283
Total Southern Asia	500	428	558	593	808	784	1 195	1 822	2 606	2 751	1 928
Central Asia											
Afghanistan	34	62	136	140	130	205	226	189	258	259	228
Armenia (d)	-	-	8	-	-	-	-	-	-	1	-
Azerbaijan (d)	-	-	-	-	4	7	1	-	3	3	4
Georgia (d)	-	-	-	-	-	-	-	1	1	1	-
Kazakhstan (d)	7	2	2	7	4	1	4	5	5	9	6
Kyrgyz Republic (d)	1	-	1	8	12	1	5	2	3	4	1
Tajikistan (d)	-	-	-	-	1	-	-	-	-	1	-
Turkmenistan (d)	1	-	-	-	-	-	3	-	-	1	-
Uzbekistan (d)	-	2	-	1	2	-	6	1	8	6	9
Total Central Asia	43	66	147	156	153	214	245	198	278	285	248
Northern America											
Bermuda	-	-	-	-	-	-	-	-	-	-	-
Canada	97	97	73	74	101	109	91	120	98	83	88
USA	97	115	125	136	160	147	174	132	127	162	175
Total Northern America	194	212	198	210	261	256	265	252	225	245	263

(d) As reliable data are not available for component countries prior to 1995-96, care should be taken when interpreting the data. See page 64.

(f) Excluding SARs and Taiwan.

(g) SAR of China.

Western Australia

Table 6.1 (continued) **Settler arrivals by birthplace, 2000-01 to 2010-11**

Birthplace	2000-01	2001-02	2002-03	2003-04	2004-05	2005-06	2006-07	2007-08	2008-09	2009-10	2010-11
South America, Central America & the Caribbean											
<i>South America</i>											
Argentina	4	2	12	14	8	7	12	14	7	15	9
Bolivia	-	-	2	-	3	2	1	2	2	2	2
Brazil	7	17	9	12	27	24	31	48	56	68	41
Chile	5	6	11	11	7	6	20	11	21	13	11
Colombia	1	6	13	6	11	11	15	12	25	31	25
Ecuador	-	-	-	1	-	1	3	3	1	2	-
Guyana	6	-	3	-	-	5	2	1	-	1	1
Paraguay	-	-	-	1	1	-	-	-	2	1	-
Peru	4	3	3	6	9	13	23	20	30	20	17
Suriname	-	-	-	-	-	-	1	-	1	-	-
Uruguay	-	-	1	6	1	1	2	3	1	1	1
Venezuela	1	2	4	7	1	13	8	21	28	18	22
South America nfd	-	-	-	-	-	-	-	-	1	-	-
Total	28	36	58	64	68	83	118	135	175	172	129
<i>Central America</i>											
Costa Rica	-	1	2	-	-	-	-	-	-	2	-
El Salvador	7	3	4	-	1	3	3	15	4	8	7
Guatemala	-	-	-	-	-	-	-	-	1	1	-
Honduras	-	-	-	-	-	-	-	3	-	2	-
Mexico	2	2	3	2	6	3	7	9	8	14	6
Nicaragua	-	-	-	-	-	-	3	-	-	-	1
Panama	-	-	-	1	-	-	-	-	1	1	-
Central America nfd	-	-	-	-	-	-	-	-	-	3	-
Total	9	6	9	3	7	6	13	27	14	31	14
<i>The Caribbean</i>											
Bahamas	1	-	1	-	-	-	1	2	-	2	2
Barbados	-	-	2	-	1	-	2	2	1	1	-
Cayman Islands	-	1	-	-	1	-	2	-	-	1	3
Cuba	1	2	1	-	1	4	-	2	7	2	1
Dominican Republic	-	-	-	1	-	1	1	1	-	1	1
Grenada	-	-	-	-	-	1	-	-	-	-	-
Haiti	-	-	-	-	-	-	-	1	-	2	-
Jamaica	3	1	-	4	6	3	3	2	5	1	-
Martinique	-	-	-	-	-	-	-	-	-	-	1
Netherlands Antilles	1	-	-	-	1	1	-	-	-	-	-
Puerto Rico	-	-	-	-	-	-	-	-	-	1	-
St Kitts & Nevis	-	-	-	-	-	-	-	1	-	-	-
Trinidad & Tobago	6	1	3	3	4	-	12	3	2	3	-
Total	12	5	7	8	14	10	21	14	15	14	8
Total South America, Central America & The Caribbean	49	47	74	75	89	99	152	176	204	217	151

Western Australia

Table 6.1 (continued) Settler arrivals by birthplace, 2000-01 to 2010-11

Birthplace	2000-01	2001-02	2002-03	2003-04	2004-05	2005-06	2006-07	2007-08	2008-09	2009-10	2010-11
Sub-Saharan Africa											
<i>Central & West Africa</i>											
Benin	-	-	-	-	-	-	-	4	-	-	-
Burkina Faso	-	-	-	1	-	-	1	-	-	-	-
Cameroon	-	1	1	-	-	-	3	4	-	3	6
Cape Verde	-	-	-	-	-	1	-	1	-	-	1
Central African Republic	-	-	-	-	-	-	1	6	-	-	-
Chad	-	-	-	-	-	-	-	-	-	1	-
Congo	11	3	5	68	85	17	19	8	17	10	11
Congo Democratic Republic	-	-	6	19	11	42	113	103	49	47	38
Cote D'Ivoire	-	-	-	-	27	6	12	14	12	10	9
Gabon	-	-	-	-	-	1	-	-	-	-	-
Gambia	-	-	-	-	-	-	-	-	-	1	-
Ghana	4	6	8	11	8	24	30	26	16	17	14
Guinea	1	3	4	1	24	14	37	11	11	11	16
Liberia	12	48	25	28	137	98	124	72	62	50	21
Mali	-	-	-	-	-	-	-	-	-	1	-
Mauritania	-	-	-	-	-	1	-	28	-	-	-
Niger	-	-	1	-	-	-	-	1	-	-	-
Nigeria	4	20	14	17	15	16	30	32	53	45	52
Senegal	1	2	2	-	-	2	-	44	1	1	-
Sierra Leone	48	84	35	25	109	55	79	42	24	31	15
Togo	-	-	-	-	-	-	10	16	15	3	2
Total	81	167	101	170	416	277	459	412	260	231	185
<i>Southern & East Africa</i>											
Angola	-	-	-	-	-	1	1	1	5	1	-
Botswana	3	4	6	13	7	4	4	3	5	14	6
Burundi	2	4	3	4	26	60	69	52	70	17	14
Djibouti	2	1	-	-	1	-	-	-	-	2	8
Eritrea (h)	39	20	15	24	15	33	31	23	27	28	17
Ethiopia (h)	74	49	63	110	82	36	85	58	118	98	90
Kenya	91	157	186	172	179	138	201	170	235	158	127
Lesotho	-	1	-	-	-	-	1	-	2	1	-
Madagascar	1	1	1	-	1	1	2	1	1	-	2
Malawi	4	4	1	12	10	4	10	13	10	12	2
Mauritius	21	35	46	42	50	68	60	88	133	93	53
Mozambique	5	4	6	7	2	1	4	3	7	7	7
Namibia	16	10	13	10	8	13	14	7	14	21	11
Reunion	-	1	-	-	1	2	-	1	2	1	-
Rwanda	-	-	1	8	14	22	20	20	14	12	5
Seychelles	-	10	3	14	7	19	14	12	10	12	5
Somalia	37	32	23	31	25	26	63	48	96	56	78
South Africa	1 584	1 471	1 144	1 550	1 178	1 086	1 101	1 483	2 244	2 407	1 467
Swaziland	1	1	2	5	1	3	-	1	3	1	1
Tanzania	3	8	5	16	25	88	69	58	71	14	30
Uganda	5	7	11	14	37	20	57	44	29	30	31
Zambia	17	39	25	38	29	31	51	34	40	43	43
Zimbabwe	274	367	526	688	432	354	264	334	399	397	242
Southern & East Africa nfd	-	-	-	-	-	-	-	-	1	-	-
Total	2 179	2 226	2 080	2 758	2 130	2 010	2 121	2 454	3 536	3 425	2 239
Total											
Sub-Saharan Africa	2 260	2 393	2 181	2 928	2 546	2 287	2 580	2 866	3 796	3 656	2 424
Supplementary codes (i)											
Fmr USSR	61	71	62	62	55	56	34	60	66	78	111
Total	61	71	62	62	55	56	34	60	66	78	111
Not stated	5	4	6	8	-	3	24	40	8	5	10
Total all countries	11 565	10 954	12 279	15 411	16 318	17 638	19 783	22 738	24 463	20 976	18 441

(h) As reliable data are not available for component countries prior to 1995-96, care should be taken when interpreting the data. See page 64.

(i) Supplementary codes cannot be classified to any major region in the Standard Australian Classification of Countries (SACC). This may lead to under reporting of their component countries in the rest of the table, care should be taken when interpreting the data.

Tasmania

Table 7.1 Settler arrivals by birthplace, 2000-01 to 2010-11

Birthplace	2000-01	2001-02	2002-03	2003-04	2004-05	2005-06	2006-07	2007-08	2008-09	2009-10	2010-11
Oceania											
<i>Australia & External Territories (a)</i>	3	3	2	2	2	-	6	5	4	5	7
<i>New Zealand</i>	106	73	93	83	84	79	90	131	135	111	104
<i>Melanesia</i>											
Papua New Guinea	-	1	-	-	1	1	-	-	1	1	2
Vanuatu	-	-	-	-	-	-	1	-	-	-	-
<i>Total</i>	-	1	-	-	1	1	1	-	1	1	2
<i>Micronesia</i>											
Kiribati	-	-	1	-	-	-	-	-	-	-	-
<i>Total</i>	-	-	1	-	-	-	-	-	-	-	-
<i>Polynesia (excluding Hawaii)</i>											
Cook Islands	2	-	1	-	-	-	-	-	1	-	-
Fiji	7	11	1	9	2	6	2	3	16	9	4
French Polynesia	-	-	-	-	1	-	-	-	1	-	-
Niue	-	-	-	1	-	-	-	-	-	-	1
Samoa	-	-	3	3	-	-	-	3	5	1	5
Tokelau	-	-	-	-	-	-	-	-	-	-	2
Tonga	2	1	1	-	2	-	1	-	1	2	-
<i>Total</i>	11	12	6	13	5	6	3	6	24	12	12
Total Oceania	120	89	102	98	92	86	100	142	164	129	125
Europe											
<i>United Kingdom & Ireland</i>											
UK	76	64	108	102	171	177	174	202	169	129	88
Ireland	1	1	2	5	4	9	7	6	8	11	9
<i>Total</i>	77	65	110	107	175	186	181	208	177	140	97
<i>Western Europe</i>											
Austria	1	-	-	-	1	1	3	1	-	-	-
Belgium	-	-	-	-	1	-	-	-	-	-	1
France	2	1	1	3	2	3	5	2	2	4	2
Germany	9	10	9	7	9	27	21	20	10	19	5
Luxembourg	-	-	-	-	-	-	-	-	-	-	1
Netherlands	11	8	12	7	9	7	23	8	13	7	4
Switzerland	1	1	-	3	6	-	-	5	-	-	1
<i>Total</i>	24	20	22	20	28	38	52	36	25	30	14
<i>Northern Europe</i>											
Denmark	1	-	1	2	1	1	-	1	2	4	2
Finland	-	-	1	3	-	-	1	-	1	4	-
Iceland	-	-	-	-	1	-	-	-	-	-	-
Norway	-	-	-	-	-	2	2	-	-	1	-
Sweden	-	-	2	1	1	2	1	-	-	1	2
<i>Total</i>	1	-	4	6	3	5	4	1	3	10	4
<i>Southern Europe</i>											
Gibraltar	-	-	-	-	-	-	-	-	-	1	-
Italy	2	3	-	2	-	4	-	-	-	-	1
Malta	-	-	-	-	-	-	-	-	-	2	-
Portugal	-	-	-	-	1	1	-	-	-	1	-
Spain	-	-	1	1	1	-	-	-	1	2	5
<i>Total</i>	2	3	1	3	2	5	-	-	1	6	6

(a) The Australia component consists of persons born in Australia who have settled overseas and returned.

Tasmania

Table 7.1 (continued) **Settler arrivals by birthplace, 2000-01 to 2010-11**

Birthplace	2000-01	2001-02	2002-03	2003-04	2004-05	2005-06	2006-07	2007-08	2008-09	2009-10	2010-11
<i>South Eastern Europe</i>											
Albania	2	1	-	-	1	-	-	-	-	-	-
Bosnia & Herzegovina (b)	2	8	-	1	-	-	-	2	-	-	1
Bulgaria	1	-	-	1	2	-	2	4	-	-	-
Croatia (b)	2	1	6	-	-	1	-	3	1	-	-
Cyprus	-	2	-	1	1	-	-	1	-	-	-
Fmr Yugo Rep of Macedonia (b)	-	1	-	-	-	-	1	1	-	-	-
Greece	3	-	-	1	1	1	3	1	1	1	-
Romania	2	4	-	1	1	-	1	2	5	4	-
Serbia (b)	-	-	-	-	-	-	-	1	-	-	-
Fmr Serbia & Montenegro (b)	28	65	24	8	9	-	3	-	2	1	1
Slovenia (b)	-	-	-	-	-	-	-	2	-	-	-
Total	40	82	30	13	15	2	10	17	9	6	2
<i>Eastern Europe</i>											
Belarus (c)	-	-	-	2	-	-	3	2	-	-	2
Czech Republic (c)	-	-	-	-	-	-	-	-	2	1	1
Former Czechoslovakia (c)	-	1	1	-	-	1	-	-	1	1	-
Hungary	-	-	1	-	-	-	-	2	-	1	1
Latvia (c)	-	1	2	-	2	-	-	-	1	-	-
Poland	4	-	4	7	8	3	5	1	7	5	3
Russian Federation (c)	-	-	1	-	2	3	1	1	1	3	2
Ukraine	-	-	-	-	2	-	1	-	-	1	-
Total	4	2	9	9	14	7	10	6	12	12	9
Total Europe	148	172	176	158	237	243	257	268	227	204	132
North Africa & The Middle East											
<i>North Africa</i>											
Algeria	-	1	-	-	-	-	-	-	-	-	-
Egypt	3	4	9	13	10	10	3	2	1	5	3
Libya	-	-	-	-	1	-	-	1	-	2	-
Morocco	-	-	-	-	-	-	-	1	-	-	2
Sudan	87	71	147	172	172	82	39	38	16	23	11
Total	90	76	156	185	183	92	42	42	17	30	16
<i>The Middle East</i>											
Bahrain	2	-	-	-	-	-	-	-	-	-	1
Iran	1	7	2	9	4	4	8	11	20	7	8
Iraq	13	4	13	19	5	6	6	2	12	19	8
Israel	-	-	-	-	-	2	2	-	-	-	1
Kuwait	-	-	-	1	1	-	-	1	1	1	-
Lebanon	1	2	2	2	1	2	2	2	-	-	1
Oman	-	-	-	-	-	1	-	-	-	-	-
Qatar	-	-	-	-	-	-	1	-	-	-	-
Saudi Arabia	-	-	-	-	2	-	-	1	2	1	1
Syria	1	-	4	1	1	4	1	1	1	1	3
Turkey	3	3	3	5	-	1	1	-	-	2	1
United Arab Emirates	-	-	-	-	-	-	-	-	3	1	1
Yemen	-	3	-	-	1	-	-	-	-	-	-
Total	21	19	24	37	15	20	21	18	39	32	25
Total North Africa & the Middle East	111	95	180	222	198	112	63	60	56	62	41

(b) As reliable data are not available for component countries prior to 1995-96, care should be taken when interpreting the data. Serbia and Montenegro was previously called the Federal Republic of Yugoslavia and since 1998-99 contains the Former Yugoslavia nfd. See page 64.

(c) As reliable data are not available for component countries prior to 1995-96, care should be taken when interpreting the data. See page 64.

(d) As reliable data are not available for component countries prior to 1995-96, care should be taken when interpreting the data. See page 64.

Tasmania

Table 7.1 (continued) **Settler arrivals by birthplace, 2000-01 to 2010-11**

Birthplace	2000-01	2001-02	2002-03	2003-04	2004-05	2005-06	2006-07	2007-08	2008-09	2009-10	2010-11
Southeast Asia											
Burma (Myanmar)	-	2	-	1	1	-	44	34	60	68	34
Cambodia	-	2	-	-	1	-	1	-	1	1	3
East Timor	-	-	-	-	-	1	-	-	-	1	-
Indonesia	2	14	8	4	4	9	8	8	4	9	11
Laos	-	1	3	-	-	-	-	2	1	-	1
Malaysia	8	5	16	11	12	15	13	20	13	18	10
Philippines	28	18	28	30	40	33	49	46	53	62	42
Singapore	5	5	10	19	35	8	8	21	9	2	9
Thailand	3	16	13	19	10	12	14	25	47	63	22
Vietnam	3	6	7	3	1	3	5	5	6	9	7
Total Southeast Asia	49	69	85	87	104	81	142	161	194	233	139
Northeast Asia											
China (f)	17	15	27	25	31	29	56	62	78	75	55
Hong Kong (g)	1	2	3	3	5	3	4	6	7	4	4
Japan	7	2	5	9	8	4	12	14	10	11	8
Korea	4	6	5	11	35	16	21	32	11	14	9
Mongolia	1	-	3	-	-	2	-	-	-	-	-
Taiwan	5	5	2	1	-	8	6	8	2	3	1
Total Northeast Asia	35	30	45	49	79	62	99	122	108	107	77
Southern Asia											
Bangladesh	1	4	4	-	-	2	1	3	3	3	2
Bhutan	-	-	-	-	-	-	-	16	81	86	137
India	17	11	23	27	30	47	47	68	69	44	47
Maldives	-	-	-	-	-	-	2	-	-	-	-
Nepal	1	1	-	-	-	2	2	2	28	46	87
Pakistan	2	-	1	4	3	1	6	3	6	8	2
Sri Lanka	8	4	5	8	4	6	12	5	11	21	7
Total Southern Asia	29	20	33	39	37	58	70	97	198	208	282
Central Asia											
Afghanistan	5	-	4	39	12	2	11	15	17	6	6
Kazakhstan (d)	-	-	1	-	-	-	-	1	-	-	1
Uzbekistan (d)	-	-	-	-	-	1	-	-	1	-	-
Total Central Asia	5	-	5	39	12	3	11	16	18	6	7
Northern America											
Canada	12	3	10	6	6	14	10	7	9	10	4
USA	7	11	20	17	34	33	19	23	26	28	27
Total Northern America	19	14	30	23	40	47	29	30	35	38	31
South America, Central America & the Caribbean											
<i>South America</i>											
Argentina	-	-	-	9	4	4	2	1	-	-	-
Bolivia	1	-	-	-	-	-	-	1	-	1	-
Brazil	-	2	2	1	4	7	2	6	3	1	2
Chile	1	-	-	2	2	2	-	8	3	3	-
Colombia	-	1	-	1	-	1	1	1	2	6	-
Paraguay	-	1	-	-	-	-	1	-	-	-	-
Peru	-	1	4	-	3	2	1	2	1	2	2
Venezuela	-	-	-	-	-	-	1	-	-	-	-
Total	2	5	6	13	13	16	8	19	9	13	4

(d) As reliable data are not available for component countries prior to 1995-96, care should be taken when interpreting the data. See page 64.

(f) Excluding SARs and Taiwan.

(g) SAR of China.

Tasmania

Table 7.1 (continued) Settler arrivals by birthplace, 2000-01 to 2010-11

Birthplace	2000-01	2001-02	2002-03	2003-04	2004-05	2005-06	2006-07	2007-08	2008-09	2009-10	2010-11
<i>Central America</i>											
Costa Rica	-	1	1	-	-	3	-	-	-	-	-
El Salvador	-	-	-	-	-	-	-	1	2	-	-
Mexico	-	-	-	1	1	1	-	-	1	4	-
Total	-	1	1	1	1	4	-	1	3	4	-
<i>The Caribbean</i>											
Cuba	1	-	-	1	-	-	-	-	-	-	-
Jamaica	-	-	-	-	-	-	1	-	-	1	-
Netherlands Antilles	-	-	-	-	-	-	-	1	-	-	-
Puerto Rico	-	-	-	-	-	-	-	-	-	1	-
Trinidad & Tobago	-	-	-	1	-	-	-	-	-	1	1
Total	1	-	-	2	-	-	1	1	-	3	1
Total South America, Central America & The Caribbean	3	6	7	16	14	20	9	21	12	20	5
Sub-Saharan Africa											
<i>Central & West Africa</i>											
Congo	-	-	1	-	1	-	3	-	2	10	-
Congo Democratic Republic	-	-	-	-	-	1	11	35	7	42	17
Côte d'Ivoire	-	-	-	-	-	-	1	-	1	-	-
Ghana	-	-	1	-	4	5	4	2	1	4	1
Guinea	-	-	1	2	1	-	6	4	2	2	-
Liberia	-	-	-	-	8	8	15	19	4	13	-
Mali	-	-	-	-	-	-	-	1	-	-	-
Niger	-	-	-	-	-	2	-	-	-	-	-
Nigeria	-	-	-	3	-	-	-	-	4	2	1
Senegal	-	-	-	-	-	-	1	-	-	-	-
Sierra Leone	-	14	33	10	42	37	19	12	9	6	-
Togo	-	-	-	-	1	-	-	1	-	-	-
Total	-	14	36	15	57	53	60	74	30	79	19
<i>Southern & East Africa</i>											
Botswana	-	-	-	-	-	-	-	-	1	-	-
Burundi	-	-	-	1	1	21	19	5	1	3	-
Eritrea	-	8	6	13	3	3	2	11	12	10	15
Ethiopia	9	5	46	54	27	19	40	18	20	15	8
Kenya	1	4	10	5	9	1	7	2	5	3	7
Malawi	-	-	1	-	-	-	-	3	1	-	-
Mauritius	-	-	-	-	-	-	-	-	2	-	1
Mozambique	-	-	-	-	1	-	1	-	-	-	-
Namibia	-	-	-	-	-	-	-	1	2	-	-
Rwanda	-	-	12	1	-	-	4	1	-	14	2
Seychelles	-	-	-	-	-	3	-	-	1	-	-
Somalia	2	9	2	1	-	-	1	-	1	2	-
South Africa	16	35	27	34	24	34	26	34	104	88	23
Tanzania	-	-	-	1	-	10	11	9	1	2	1
Uganda	-	2	3	7	-	7	7	-	-	12	9
Zambia	-	-	-	3	1	-	-	-	-	1	16
Zimbabwe	2	9	2	6	7	10	4	10	20	7	2
Total	30	72	109	126	73	108	122	94	171	157	84
Total Sub-Saharan Africa	30	86	145	141	130	161	182	168	201	236	103
Supplementary codes (i)											
Fmr USSR	15	7	3	9	1	6	6	7	6	7	7
Total	15	7	3	9	1	6	6	7	6	7	7
Not stated	-	1	-	3	-	-	-	-	-	-	-
Total all countries	564	589	811	884	944	879	968	1 092	1 219	1 250	949

(i) Supplementary codes cannot be classified to any major region in the Standard Australian Classification of Countries (SACC). This may lead to under reporting of their component countries in the rest of the table, care should be taken when interpreting the data.

Northern Territory

Table 8.1 Settler arrivals by birthplace, 2000-01 to 2010-11

Birthplace	2000-01	2001-02	2002-03	2003-04	2004-05	2005-06	2006-07	2007-08	2008-09	2009-10	2010-11
Oceania											
<i>Australia & External Territories (a)</i>	4	1	2	6	5	5	1	3	8	6	5
<i>New Zealand</i>	91	63	34	66	46	96	84	106	140	98	148
Melanesia											
New Caledonia	-	-	-	-	-	-	1	-	-	-	-
Papua New Guinea	4	9	6	13	8	6	2	10	5	-	15
Solomon Islands	1	-	-	1	3	-	-	-	-	2	1
Vanuatu	-	-	-	-	-	-	1	2	-	1	-
Total	5	9	6	14	11	6	4	12	5	3	16
Micronesia											
Micronesia, Federated States of	-	-	-	-	-	-	-	-	-	1	-
Kiribati	-	4	-	-	1	-	-	-	-	-	-
Total	-	4	-	-	1	-	-	-	-	1	-
Polynesia (excluding Hawaii)											
Cook Islands	-	-	-	1	-	-	-	1	-	-	3
Fiji	6	4	4	1	1	11	2	4	10	2	6
Niue	-	-	-	-	-	-	-	-	-	1	-
Samoa	-	-	-	1	1	2	-	1	4	1	3
Tonga	2	-	2	1	-	2	-	-	-	1	-
Total	8	4	6	4	2	15	2	6	14	5	12
Total Oceania	108	81	48	90	65	122	91	127	167	113	181
Europe											
United Kingdom & Ireland											
UK	51	36	52	90	91	67	109	106	163	139	69
Ireland	4	6	6	5	6	6	7	8	8	11	15
Total	55	42	58	95	97	73	116	114	171	150	84
Western Europe											
Austria	-	-	-	2	-	-	-	1	-	3	-
Belgium	-	-	-	-	2	-	-	2	2	1	-
France	3	3	2	2	1	1	2	1	2	4	2
Germany	5	7	7	4	14	15	17	5	32	16	19
Netherlands	1	3	2	2	7	1	10	3	12	4	1
Switzerland	-	2	2	2	3	4	-	2	1	-	2
Total	9	15	13	12	27	21	29	14	49	28	24
Northern Europe											
Denmark	1	-	3	-	-	-	1	-	1	2	-
Iceland	1	-	-	-	-	-	-	-	-	-	-
Norway	-	-	-	1	-	-	-	-	-	3	-
Sweden	1	-	3	1	-	-	-	2	1	-	-
Total	3	-	6	2	-	-	1	2	2	5	-
Southern Europe											
Italy	-	-	-	2	-	2	4	5	-	-	2
Malta	-	-	-	-	1	1	1	-	-	-	-
Portugal	1	1	-	1	1	-	-	-	1	-	2
Spain	-	-	1	-	-	1	-	3	1	3	1
Total	1	1	1	3	2	4	5	8	2	3	5

(a) The Australia component consists of persons born in Australia who have settled overseas and returned.

Northern Territory

Table 8.1 (continued) **Settler arrivals by birthplace, 2000-01 to 2010-11**

Birthplace	2000-01	2001-02	2002-03	2003-04	2004-05	2005-06	2006-07	2007-08	2008-09	2009-10	2010-11
<i>South Eastern Europe</i>											
Albania	1	-	-	-	-	1	-	1	-	-	-
Bosnia & Herzegovina (b)	-	2	-	-	1	2	-	-	-	-	-
Bulgaria	-	1	1	-	-	-	1	1	1	-	-
Croatia (b)	1	3	-	-	1	1	-	-	-	-	-
Cyprus	1	-	-	-	-	1	1	1	1	1	-
Fmr Yugo Rep of Macedonia (b)	-	-	-	-	-	1	-	1	-	-	-
Greece	3	4	-	5	7	9	6	6	12	22	10
Romania	-	-	2	1	2	1	-	-	-	3	-
Serbia (b)	-	-	-	-	-	-	-	1	-	1	1
Slovenia	-	-	-	-	-	-	-	-	-	-	1
Fmr Serbia & Montenegro (b)	-	2	5	1	1	1	1	1	1	1	-
Total	6	12	8	7	12	17	9	12	15	28	12
<i>Eastern Europe</i>											
Czech Republic (d)	-	2	-	-	-	-	-	3	-	-	1
Estonia	-	-	-	-	-	-	-	-	1	-	-
Former Czechoslovakia (d)	1	1	-	-	1	-	2	-	-	1	-
Hungary	-	1	-	-	3	-	1	1	1	-	-
Poland	4	-	-	1	2	6	-	-	1	1	2
Russian Federation	-	4	-	-	1	-	-	4	2	2	1
Slovakia (d)	-	-	-	-	1	-	-	-	-	-	-
Ukraine	-	-	2	-	-	-	-	-	1	-	5
Total	5	8	2	1	8	6	3	8	6	4	9
Total Europe	79	78	88	120	146	121	163	158	245	218	134
North Africa & The Middle East											
<i>North Africa</i>											
Egypt	1	4	1	4	6	9	1	-	-	1	2
Libya	-	-	-	-	-	-	-	-	-	-	1
Morocco	-	-	1	1	-	-	-	-	-	1	-
Sudan	47	13	56	52	67	45	14	5	9	4	8
Total	48	17	58	57	73	54	15	5	9	6	11
<i>The Middle East</i>											
Iran	1	-	2	1	1	-	2	2	5	6	8
Iraq	4	2	12	5	2	7	1	3	4	4	3
Israel	2	-	1	1	-	-	1	1	3	2	-
Jordan	-	-	-	-	1	-	-	1	1	-	-
Kuwait	-	-	-	-	-	-	-	2	1	2	1
Lebanon	-	2	2	1	2	-	4	4	3	2	1
Oman	-	-	-	-	-	-	-	-	3	-	-
Qatar	1	-	-	-	-	-	1	1	-	-	-
Saudi Arabia	-	-	-	-	-	-	-	-	-	-	1
Syria	1	-	-	-	-	-	-	1	-	-	-
Turkey	-	1	-	-	1	3	-	1	1	1	1
United Arab Emirates	-	-	-	1	-	-	1	-	1	1	-
Yemen	2	-	-	-	-	-	-	-	-	-	-
Middle East nfd	1	-	-	-	-	-	-	-	-	-	-
Total	12	5	17	9	7	10	10	16	22	18	15
Total North Africa & the Middle East	60	22	75	66	80	64	25	21	31	24	26

(b) As reliable data are not available for component countries prior to 1995-96, care should be taken when interpreting the data. Serbia and Montenegro was previously called the Federal Republic of Yugoslavia and since 1998-99 contains the Former Yugoslavia nfd. See page 64.

(c) As reliable data are not available for component countries prior to 1995-96, care should be taken when interpreting the data. See page 64.

(d) As reliable data are not available for component countries prior to 1995-96, care should be taken when interpreting the data. See page 64.

Northern Territory

Table 8.1 (continued) **Settler arrivals by birthplace, 2000-01 to 2010-11**

Birthplace	2000-01	2001-02	2002-03	2003-04	2004-05	2005-06	2006-07	2007-08	2008-09	2009-10	2010-11
Southeast Asia											
Brunei	-	3	-	3	1	8	1	1	2	-	-
Burma (Myanmar)	1	1	3	-	2	-	6	19	32	23	23
Cambodia	2	7	5	4	2	6	5	8	3	10	4
East Timor (e)	5	7	13	11	7	9	9	7	5	6	11
Indonesia (e)	22	40	39	33	20	32	40	50	52	65	59
Laos	-	-	1	-	1	-	-	1	-	1	1
Malaysia	20	4	9	12	3	21	21	34	16	18	15
Philippines	30	40	46	53	48	66	118	83	94	123	113
Singapore	6	12	2	4	5	47	25	29	25	26	11
Thailand	12	31	22	28	18	17	38	61	65	62	49
Vietnam	5	12	12	10	14	12	14	18	24	24	33
Total Southeast Asia	103	157	152	158	121	218	277	311	318	358	319
Northeast Asia											
China (f)	11	16	8	14	15	29	44	46	38	51	35
Hong Kong (g)	-	1	1	-	2	4	1	3	6	7	5
Japan	2	3	5	2	4	2	4	6	4	1	1
Korea	2	3	1	3	3	3	-	5	7	11	6
Mongolia	-	-	-	-	-	-	-	-	-	2	-
Taiwan	1	2	-	1	1	2	2	3	6	8	10
Total Northeast Asia	16	25	15	20	25	40	51	63	61	80	57
Southern Asia											
Bangladesh	1	-	3	5	1	4	5	8	7	7	4
Bhutan	-	-	-	-	-	-	-	1	13	14	8
India	20	18	14	25	32	32	33	61	79	119	87
Nepal	-	-	-	3	-	3	2	4	11	11	12
Pakistan	6	1	8	10	6	9	8	10	4	13	3
Sri Lanka	13	2	10	5	9	2	11	8	14	18	23
Total Southern Asia	40	21	35	48	48	50	59	92	128	182	137
Central Asia											
Afghanistan	2	1	1	2	-	3	5	3	2	4	-
Total Central Asia	2	1	1	2	-	3	5	3	2	4	-
Northern America											
Canada	6	1	1	6	4	4	1	3	9	6	6
USA	15	8	6	10	6	22	15	6	8	15	10
Total Northern America	21	9	7	16	10	26	16	9	17	21	16
South America, Central America & the Caribbean											
<i>South America</i>											
Argentina	1	-	-	-	-	1	-	-	1	-	-
Bolivia	-	-	2	-	-	-	-	-	1	-	-
Brazil	2	-	1	1	1	3	2	6	4	4	1
Chile	-	-	-	1	-	-	-	-	-	1	-
Colombia	-	3	-	-	-	-	1	2	2	-	-
Ecuador	-	-	-	-	-	1	-	1	-	-	-
Falkland Islands	-	-	-	2	-	-	-	-	-	-	-
Peru	-	-	2	2	1	-	4	-	-	-	1
Venezuela	-	-	-	-	-	-	-	1	2	-	1
Total	3	3	5	6	2	5	7	10	10	5	3

(e) East Timor previously recorded under Indonesia, care should be taken when interpreting the data. See page 64.

(f) Excluding SARs and Taiwan.

(g) SAR of China.

Northern Territory

Table 8.1 (continued) Settler arrivals by birthplace, 2000-01 to 2010-11

Birthplace	2000-01	2001-02	2002-03	2003-04	2004-05	2005-06	2006-07	2007-08	2008-09	2009-10	2010-11
<i>Central America</i>											
Belize	-	-	-	-	-	-	-	1	-	-	-
El Salvador	-	-	-	-	-	-	-	-	-	-	2
Guatemala	-	-	-	-	-	1	-	4	-	-	-
Honduras	-	-	-	-	-	1	1	-	-	-	-
Total	-	-	-	-	-	2	1	5	-	-	2
<i>The Caribbean</i>											
Cuba	-	-	-	-	-	-	-	2	2	-	-
Dominican Republic	-	-	-	-	1	-	-	-	-	-	-
Haiti	-	6	-	-	-	-	-	-	-	-	-
Jamaica	-	-	-	-	-	1	-	-	-	-	-
St Kitts & Nevis	-	-	-	-	-	-	-	1	-	-	1
Total	-	6	-	-	1	1	-	3	2	-	1
Total South America, Central America & The Caribbean	3	9	5	6	3	8	8	18	12	5	6
Sub-Saharan Africa											
<i>Central & West Africa</i>											
Cameroon	-	-	-	-	-	-	-	1	-	7	-
Congo	-	-	-	16	5	3	1	1	-	-	-
Congo, Democratic Republic of	-	-	-	-	-	-	38	17	7	14	6
Cote D'Ivoire	-	-	-	-	1	1	-	3	-	-	-
Ghana	-	-	-	4	1	5	4	1	2	3	4
Guinea	-	-	-	3	4	2	2	-	1	2	-
Liberia	-	20	3	4	20	24	11	12	10	9	-
Nigeria	-	1	6	3	1	1	-	1	4	5	-
Sierra Leone	3	1	-	-	2	2	-	3	1	11	-
Togo	-	-	-	-	-	-	-	-	-	-	2
Total	3	22	9	30	34	38	56	39	25	51	12
<i>Southern & East Africa</i>											
Botswana	-	-	1	-	-	-	1	-	-	3	-
Burundi	-	-	-	-	4	1	4	2	2	2	-
Djibouti	-	1	-	-	-	-	-	-	-	-	-
Eritrea	-	-	2	-	-	-	-	-	-	-	3
Ethiopia	7	7	9	10	10	2	5	2	6	4	3
Kenya	9	-	7	6	4	25	9	4	4	8	3
Madagascar	-	1	-	-	-	-	1	-	-	-	-
Malawi	-	-	-	-	-	-	1	-	1	-	3
Mauritius	-	-	3	-	-	-	-	-	-	-	-
Mozambique	-	1	-	-	-	-	-	-	-	-	1
Namibia	-	-	-	-	-	1	-	-	1	-	1
Rwanda	-	-	-	-	-	7	1	1	-	-	-
Seychelles	-	-	-	-	-	-	-	-	3	-	-
Somalia	2	-	1	1	6	10	31	3	4	10	4
South Africa	8	12	17	8	13	11	9	14	27	54	31
Tanzania	-	-	-	1	1	4	6	7	4	-	3
Uganda	-	-	2	3	5	9	11	1	2	1	5
Zambia	-	2	1	-	1	2	4	2	1	5	-
Zimbabwe	10	4	-	5	12	14	9	5	16	43	10
Total	36	28	43	34	56	86	92	41	71	130	67
Total Sub-Saharan Africa	39	50	52	64	90	124	148	80	96	181	79
Supplementary codes (i)											
Fmr USSR	1	6	5	6	4	4	-	6	2	5	5
Total	1	6	5	6	4	4	-	6	2	5	5
Not stated	-	-	-	-	-	-	-	-	-	5	-
Total all countries	472	459	483	596	592	780	843	888	1 079	1 196	960

(i) Supplementary codes cannot be classified to any major region in the Standard Australian Classification of Countries (SACC). This may lead to under reporting of their component countries in the rest of the table, care should be taken when interpreting the data.

Australian Capital Territory

Table 9.1 Settler arrivals by birthplace, 2000-01 to 2010-11

Birthplace	2000-01	2001-02	2002-03	2003-04	2004-05	2005-06	2006-07	2007-08	2008-09	2009-10	2010-11
Oceania											
<i>Australia & External Territories (a)</i>	9	5	4	9	14	6	6	1	13	15	10
<i>New Zealand</i>	195	133	87	89	85	96	123	117	124	133	169
<i>Melanesia</i>											
New Caledonia	-	-	-	-	1	-	1	-	-	-	-
Papua New Guinea	-	-	7	-	6	-	4	3	4	4	2
Solomon Islands	-	-	-	1	2	1	-	-	3	-	2
Vanuatu	-	-	1	-	-	-	-	-	-	-	-
<i>Total</i>	-	-	8	1	9	1	5	3	7	4	4
<i>Micronesia</i>											
Guam	-	-	-	-	-	-	1	-	-	-	-
Klribati	-	-	-	-	-	-	-	-	-	4	-
Northerh Mariana Islands	-	-	-	-	-	-	-	1	-	-	-
<i>Total</i>	-	-	-	-	-	-	1	1	-	4	-
<i>Polynesia (excluding Hawaii)</i>											
Cook Islands	-	2	-	1	-	-	-	1	2	2	1
Fiji	24	12	22	12	18	26	16	11	25	21	17
French Polynesia	-	-	-	-	-	-	-	-	-	-	1
Niue	-	-	-	2	1	-	-	2	-	-	-
Samoa	7	6	8	7	5	4	1	6	4	8	8
Samoa American	1	-	-	-	-	-	-	-	-	-	-
Tokelau	-	-	-	-	-	-	-	-	1	-	-
Tonga	1	3	3	2	3	3	7	1	5	2	1
<i>Total</i>	33	23	33	24	27	33	24	21	37	33	28
Total Oceania	237	161	132	123	135	136	159	143	181	189	211
Europe											
<i>United Kingdom & Ireland</i>											
UK	100	92	105	158	138	133	137	175	236	183	99
Ireland	2	-	6	2	6	5	3	18	5	20	16
<i>Total</i>	102	92	111	160	144	138	140	193	241	203	115
<i>Western Europe</i>											
Austria	2	2	-	1	-	2	7	-	3	1	-
Belgium	1	4	-	2	-	-	1	3	1	1	2
France	5	10	6	6	3	8	4	5	8	9	7
Germany	24	10	8	12	12	21	18	20	12	11	6
Netherlands	6	8	2	2	4	7	3	10	6	4	5
Switzerland	2	4	-	1	-	4	2	7	2	3	1
<i>Total</i>	40	38	16	24	19	42	35	45	32	29	21
<i>Northern Europe</i>											
Denmark	1	1	6	1	-	-	-	1	-	-	2
Finland	1	-	3	1	1	2	1	-	-	2	-
Iceland	2	-	-	-	-	-	-	-	-	-	-
Norway	1	-	1	4	-	-	1	-	-	1	-
Sweden	-	4	5	3	3	3	3	2	3	6	3
<i>Total</i>	5	5	15	9	4	5	5	3	3	9	5

(a) The Australia component consists of persons born in Australia who have settled overseas and returned.

Australian Capital Territory

Table 9.1 (continued) **Settler arrivals by birthplace, 2000-01 to 2010-11**

Birthplace	2000-01	2001-02	2002-03	2003-04	2004-05	2005-06	2006-07	2007-08	2008-09	2009-10	2010-11
<i>Southern Europe</i>											
Italy	1	25	4	3	2	4	1	3	7	5	4
Malta	2	-	1	-	-	2	-	14	2	-	1
Portugal	-	-	1	2	-	-	-	-	-	1	1
Spain	1	2	-	1	-	1	3	8	1	2	3
Total	4	27	6	6	2	7	4	25	10	8	9
<i>South Eastern Europe</i>											
Albania	-	-	6	-	-	-	2	1	-	-	1
Bosnia & Herzegovina (b)	7	5	1	3	1	1	1	-	-	2	2
Bulgaria	-	1	4	-	3	-	-	4	-	2	1
Croatia (b)	22	4	4	1	-	-	6	-	-	-	4
Cyprus	-	-	-	1	-	-	-	-	1	-	-
Fmr Yugo Rep of Macedonia (b)	4	11	16	1	11	7	5	5	1	5	3
Greece	1	-	3	-	-	1	2	1	-	-	4
Montenegro (b)	-	-	-	-	-	-	1	-	-	-	-
Romania	5	1	1	7	3	2	3	5	6	1	3
Serbia (b)	-	-	-	-	-	-	-	3	4	7	10
Fmr Serbia & Montenegro (b)	43	35	13	11	10	13	3	11	4	1	2
Slovenia (b)	-	-	1	-	-	2	-	1	1	-	2
Total	82	57	49	24	28	26	23	31	17	18	32
<i>Eastern Europe</i>											
Belarus (c)	-	-	-	3	-	-	-	-	-	-	-
Czech Republic (d)	-	-	1	-	-	-	-	-	-	-	-
Estonia (c)	1	-	-	-	-	-	-	-	2	-	-
Former Czechoslovakia (d)	-	1	7	1	1	1	3	2	-	-	-
Hungary	-	2	1	1	-	-	-	-	-	4	1
Latvia (c)	-	-	1	-	-	1	-	1	1	-	-
Lithuania (c)	-	-	1	-	-	-	-	-	-	-	-
Poland	6	5	5	-	2	8	1	3	4	2	6
Russian Federation (c)	2	4	3	4	8	5	3	5	5	3	1
Slovakia (d)	-	-	-	1	-	1	-	-	-	1	-
Ukraine	1	1	-	1	1	3	2	-	5	7	-
Total	10	13	19	11	12	19	9	11	17	17	8
Total Europe	243	232	216	234	209	237	216	308	320	284	190
North Africa & The Middle East											
<i>North Africa</i>											
Algeria	14	1	-	-	-	1	-	1	-	1	1
Egypt	1	1	1	5	2	12	11	11	3	7	17
Libya	-	-	-	-	-	-	-	1	-	-	1
Morocco	-	1	-	1	2	1	-	1	7	1	2
Sudan	7	18	15	50	65	28	20	22	12	14	35
Total	22	21	16	56	69	42	31	36	22	23	56

(b) As reliable data are not available for component countries prior to 1995-96, care should be taken when interpreting the data. Serbia and Montenegro was previously called the Federal Republic of Yugoslavia and since 1998-99 contains the Former Yugoslavia nfd. See page 64.

(c) As reliable data are not available for component countries prior to 1995-96, care should be taken when interpreting the data. See page 64.

(d) As reliable data are not available for component countries prior to 1995-96, care should be taken when interpreting the data. See page 64.

Australian Capital Territory

Table 9.1 (continued) **Settler arrivals by birthplace, 2000-01 to 2010-11**

Birthplace	2000-01	2001-02	2002-03	2003-04	2004-05	2005-06	2006-07	2007-08	2008-09	2009-10	2010-11
<i>The Middle East</i>											
Bahrain	-	-	-	-	-	-	-	-	-	2	-
Gaza Strip & West Bank	-	-	-	-	-	-	-	-	-	1	1
Iran	15	13	16	6	19	12	16	5	20	23	26
Iraq	7	16	37	12	10	21	12	42	41	21	20
Israel	-	-	-	4	1	8	1	5	2	9	1
Jordan	4	1	1	2	5	2	2	1	5	3	7
Kuwait	1	-	-	-	-	-	2	2	-	2	4
Lebanon	8	6	10	6	9	7	7	11	10	12	10
Saudi Arabia	-	1	1	3	1	-	1	-	-	2	1
Syria	-	5	1	-	1	-	2	2	1	2	3
Turkey	5	2	6	3	4	2	4	5	9	5	2
United Arab Emirates	1	1	2	-	-	-	2	3	5	4	1
Yemen	-	-	-	1	-	-	6	1	2	-	-
Middle East nfd	-	-	-	-	-	-	-	-	1	1	-
Total	41	45	74	37	50	52	55	77	96	87	76
Total North Africa & the Middle East	63	66	90	93	119	94	86	113	118	110	132
Southeast Asia											
Brunei	-	-	1	-	-	-	-	-	-	-	-
Burma (Myanmar)	6	23	9	5	10	10	11	58	48	21	14
Cambodia	4	4	3	7	8	6	9	6	8	10	4
East Timor (e)	-	1	-	1	-	1	1	1	-	-	-
Indonesia (e)	11	37	12	9	8	13	20	13	14	17	12
Laos	4	1	3	1	2	3	-	4	1	1	2
Malaysia	9	14	6	26	16	21	14	17	16	24	25
Philippines	49	51	19	33	43	77	53	88	94	78	73
Singapore	10	5	9	6	16	16	7	7	4	13	25
Thailand	6	27	22	20	16	26	19	24	45	32	21
Vietnam	28	25	34	29	18	37	32	34	37	36	43
Total Southeast Asia	127	188	118	137	137	210	166	252	267	232	219
Northeast Asia											
China (f)	76	82	58	87	125	143	140	153	188	184	188
Hong Kong (g)	17	6	8	7	11	14	10	8	11	11	13
Japan	5	16	11	4	9	10	9	15	11	3	8
Korea	15	6	16	14	12	22	13	18	52	38	42
Macau (g)	-	1	1	-	-	3	-	-	-	-	-
Mongolia	1	2	-	-	-	-	-	-	-	-	1
Taiwan	13	19	9	5	7	2	5	-	3	3	4
Total Northeast Asia	127	132	103	117	164	194	177	194	265	239	256
Southern Asia											
Bangladesh	10	14	16	17	40	25	26	27	40	27	31
Bhutan	-	-	-	-	-	-	-	-	5	6	16
India	90	58	67	115	112	117	168	198	300	306	165
Nepal	-	1	6	-	9	2	7	5	15	13	12
Pakistan	32	42	11	26	25	23	29	39	43	39	27
Sri Lanka	43	37	15	20	41	41	58	53	88	95	51
Total Southern Asia	175	152	115	178	227	208	288	322	491	486	302

(e) East Timor previously recorded under Indonesia, care should be taken when interpreting the data.

(f) Excluding SARs and Taiwan.

(g) SAR of China.

Australian Capital Territory

Table 9.1 (continued) **Settler arrivals by birthplace, 2000-01 to 2010-11**

Birthplace	2000-01	2001-02	2002-03	2003-04	2004-05	2005-06	2006-07	2007-08	2008-09	2009-10	2010-11
Central Asia											
Afghanistan	5	19	8	19	10	16	7	19	26	12	15
Armenia (d)	-	-	-	-	1	-	-	-	-	1	-
Azerbaijan (d)	-	-	1	-	-	-	-	-	-	-	-
Kazakhstan (d)	1	-	-	-	-	2	-	2	1	2	-
Turkmenistan (d)	-	-	-	-	-	-	-	-	1	-	-
Uzbekistan (d)	-	-	1	-	-	-	-	-	1	-	-
Total Central Asia	6	19	10	19	11	18	7	21	29	15	15
Northern America											
Bermuda	-	-	-	1	-	1	-	-	3	-	-
Canada	12	10	14	13	16	17	15	8	14	15	14
USA	31	23	29	27	28	41	36	23	41	46	25
Total Northern America	43	33	43	41	44	59	51	31	58	61	39
South America, Central America & the Caribbean											
<i>South America</i>											
Argentina	1	2	4	4	2	4	1	2	6	4	5
Bolivia	-	-	-	-	-	-	1	1	-	2	1
Brazil	14	13	10	10	7	2	6	4	3	9	5
Chile	2	1	7	4	3	4	6	6	4	1	3
Colombia	1	-	5	1	1	2	5	1	3	5	4
Ecuador	-	-	1	1	1	-	-	1	-	1	1
Guyana	-	-	-	-	-	-	-	-	1	-	-
Paraguay	-	-	-	-	1	-	-	-	-	-	-
Peru	-	-	1	3	4	2	4	5	2	2	4
Suriname	-	-	-	-	-	-	-	-	1	-	-
Uruguay	-	-	-	-	-	-	1	-	-	-	-
Venezuela	-	-	-	-	-	5	-	1	1	3	1
Total	18	16	28	23	19	19	24	21	21	27	24
<i>Central America</i>											
El Salvador	-	-	-	-	-	-	-	2	1	3	-
Guatemala	-	-	-	1	-	-	1	-	1	-	-
Mexico	2	1	7	6	3	-	-	1	1	4	3
Nicaragua	-	-	-	-	-	1	-	-	-	-	-
Panama	-	-	-	-	1	-	-	-	1	-	-
Total	2	1	7	7	4	1	1	3	4	7	3
<i>The Caribbean</i>											
Barbados	-	-	-	-	-	-	-	-	-	1	-
Cuba	-	1	-	-	-	-	-	-	-	-	2
Jamaica	-	-	-	-	-	1	-	-	-	1	1
Virgin Islands United States	-	-	-	1	-	-	-	-	-	-	-
Total	-	1	-	1	-	1	-	-	-	2	3
Total South America, Central America & The Caribbean	20	18	35	31	23	21	25	24	25	36	30

(d) As reliable data are not available for component countries prior to 1995-96, care should be taken when interpreting the data. See page 64.

Australian Capital Territory

Table 9.1 (continued) **Settler arrivals by birthplace, 2000-01 to 2010-11**

Birthplace	2000-01	2001-02	2002-03	2003-04	2004-05	2005-06	2006-07	2007-08	2008-09	2009-10	2010-11
Sub-Saharan Africa											
<i>Central & West Africa</i>											
Cameroon	-	-	-	-	-	-	1	-	-	2	-
Congo	-	-	1	1	-	2	1	-	-	1	-
Congo Democratic Republic of	-	-	-	-	-	12	1	3	5	7	14
Ghana	5	3	3	7	4	7	3	4	-	1	13
Guinea	-	-	-	1	-	-	-	2	2	1	-
Liberia	-	1	3	2	2	39	5	5	5	5	2
Niger	-	4	-	-	-	-	1	-	-	-	-
Nigeria	1	2	-	1	2	3	2	5	11	6	1
Senegal	-	-	-	-	1	-	-	-	-	-	3
Sierra Leone	-	8	-	8	43	8	7	6	1	1	-
Togo	-	-	-	-	-	-	-	-	-	-	18
Total	6	18	7	20	52	71	21	25	24	24	51
<i>Southern & East Africa</i>											
Angola	-	-	-	-	-	-	-	-	-	-	1
Botswana	-	-	-	1	1	1	-	1	2	-	-
Burundi	-	-	-	-	3	32	11	-	1	3	2
Djibouti	-	-	-	-	-	-	-	-	-	-	1
Eritrea (h)	-	-	-	2	6	2	-	2	1	2	3
Ethiopia (h)	4	11	6	14	18	3	4	5	12	7	10
Kenya	3	4	5	8	12	3	13	5	7	12	2
Lesotho	-	-	-	-	3	-	-	-	-	-	-
Madagascar	-	-	-	-	-	-	-	-	1	-	-
Malawi	-	-	-	-	-	3	-	-	1	2	-
Mauritius	1	-	3	-	1	-	-	9	20	3	4
Mozambique	-	-	-	-	-	-	-	-	-	3	1
Réunion	-	-	-	-	-	-	1	-	-	-	-
Rwanda	-	-	-	-	-	-	-	1	1	5	8
Seychelles	-	-	-	-	-	-	-	-	1	-	-
Somalia	1	1	3	1	-	1	1	-	6	6	2
South Africa	37	22	44	18	35	9	35	39	72	97	91
Tanzania	-	-	-	1	1	25	3	7	3	5	2
Uganda	-	-	-	1	1	1	4	3	1	10	7
Zambia	-	5	1	-	1	-	1	-	-	-	4
Zimbabwe	1	1	8	3	5	29	38	5	17	24	26
Total	47	44	70	49	87	109	111	77	146	179	164
Total											
Sub-Saharan Africa	53	62	77	69	139	180	132	102	170	203	215
Supplementary codes (i)											
Fmr USSR	21	12	18	7	9	15	4	8	18	14	14
Total	21	12	18	7	9	15	4	8	18	14	14
Not stated	-	-	-	1	-	-	-	-	-	-	-
Total all countries	1 115	1 075	957	1 050	1 217	1 372	1 311	1 518	1 942	1 869	1 623

(h) As reliable data are not available for component countries prior to 1995-96, care should be taken when interpreting the data. See page 64.

(i) Supplementary codes cannot be classified to any major region in the Standard Australian Classification of Countries (SACC). This may lead to under reporting of their component countries in the rest of the table, care should be taken when interpreting the data.

Explanatory notes

Definition of 'Settler'

Settlers comprise persons arriving in Australia who are one of the following:

- Holders of a permanent visa.
- Holders of a temporary (provisional) visa where there is a clear intention to settle.
- New Zealand citizens indicating an intention to settle.
- Persons otherwise eligible to settle.

Migration and humanitarian programs

The Migration (non-Humanitarian) program is made up of the Family Stream, Skill Stream and Special Eligibility migrants. The Humanitarian program is made up of Refugee, Special Humanitarian and Special Assistance migrants.

Eligibility categories

Eligibility categories reflect both the Migration and Humanitarian programs' permanent visa sub-classes under which settlers entered Australia. In addition there are a number of categories of settlers which are not covered by the Migration or Humanitarian programs.

The Family Stream consists of a number of categories under which a potential migrant can be sponsored by a relative who is an Australian citizen or a permanent resident of Australia. The Family Stream comprises the following categories:

- Spouse
- Prospective marriage
- Child
- Adoption
- Parent (meeting the balance of family test)
- Aged dependent relative
- Last remaining relative
- Orphan dependent relative
- Special need relative
- Interdependency.

The Skill Stream component of the Migration Program is designed to contribute to Australia's economic growth. It consists of a number of categories for prospective migrants related to demand in Australia for their particular occupational skills, outstanding talents or business skills. Secondary visa holders (e.g. spouses and dependents) of the primary skilled

migrant are included within the skill stream figures. These categories are:

General Skilled Migration

- Regional Sponsored (introduced 1 September 2007) for skilled persons who are unable to meet the pass mark for a Skilled Independent visa and wish to live for two years and work at least 12 months in a specified regional area of Australia and obtain either nomination by a participating state or territory government agency or sponsorship by an eligible relative living in a designated area of Australia.
- Skilled Sponsored (introduced 1 September 2007) for skilled persons unable to meet the Skilled-Independent pass mark. Applicants must be either sponsored by an eligible relative living in Australia or nominated by a participating state or territory government. Applicants must pass a points test lower than that for the Skilled Independent visa.
- Skilled Australian Sponsored (to 31 August 2007, previously known as Concessional Family to 30 June 1997 then as Australian Linked to 30 June 1999) allows Australian citizens or residents to sponsor their parents, brothers, sisters, nephews, nieces and non-dependent children. Applicants must meet a points test which takes into account their age and work skills as well as various sponsor attributes. Applicants after 31 August 2007 must now apply under Skilled Sponsored.
- Skilled Designated Area Sponsored (to 31 August 2007 Regional Linked from 1 November 1996 to 30 June 1999), allows sponsorship of skilled relatives to designated areas of Australia. Both applicants and sponsors must satisfy certain criteria.
- Independent—for applicants that are not sponsored, whose education, skills, English language ability and ready employability will contribute to the Australian economy.
- State/Territory Nominated Independent (to 31 August 2007) for persons who are interested in settling in states or territories where their skills are in demand and who have a sound chance of gaining employment in that state or territory soon after their arrival. Skill matching is included under this category.
- Skilled Independent Regional (to 31 August 2008) for skilled persons who are unable to

meet the pass mark for a permanent visa and wish to live and work in a regional or low population growth metropolitan area in Australia.

Other skilled migration

- Employer Sponsored — includes Employer Nomination for highly skilled persons nominated by employers in Australia who have been unable to find or train skilled workers in Australia for the position, the Regional Sponsored Migration Scheme for employers in regional Australia to employ skilled people in positions unable to be filled from the local labour market and Labour Agreements which are formal arrangements for an Australian industry group or employer to recruit a specified number of skilled workers on a temporary or permanent basis over a number of years.
- Business Skills—for successful business persons with established skills in business who have a genuine commitment to owning and managing a business in Australia.
- Distinguished Talent—for persons who have outstanding records of achievement in a profession, occupation, the arts or sport.

There is also a Special Eligibility category which caters for other types of settler arrivals within the Migration program not included in the Family or Skill Streams. These are:

- Former citizen of Australia
- Former resident of Australia
- Family of New Zealand Citizen for dependants of New Zealand citizens who have settled or intend to settle permanently in Australia.

The Humanitarian Program has two parts: an offshore resettlement program for persons overseas, and onshore protection for those persons already in Australia who arrived on temporary visas or in an unauthorised manner, and who claim Australia's protection.

The offshore resettlement program comprises three categories:

- the Refugee program which provides resettlement to Australia for persons outside their home country subject to persecution in their home country.
- the Special Humanitarian programs (SHP) which comprise the In-country Special

Humanitarian program for persons suffering persecution within their own country, and the Global Special Humanitarian program for persons who have left their country because of substantial discrimination amounting to a gross violation of human rights.

- the Special Assistance Category (SAC) which embraced groups determined by the Minister for Immigration and Citizenship to be of special concern to Australia and in real need, but who do not fit within other humanitarian categories. This program also assisted those internally and externally displaced people who had close family links in Australia. This category was closed during the 2000-01 program year.

In addition there are some categories not covered by the Migration or Humanitarian programs. These are:

- New Zealand Citizens, which refers to the arrival of New Zealand citizens under the Trans-Tasman Travel Arrangement.
- Other, which refers primarily to the arrival in Australia of children born to Australian citizens overseas. It also includes residents of Cocos (Keeling) Islands, Norfolk Island and persons granted Australian citizenship overseas.

Classification of countries and regions

Statistics in this publication are classified to regions and countries based on the Australian Bureau of Statistics (ABS) *Standard Australian Classification of Countries* (SACC). The classification is based on the concept of geographic proximity. It groups neighbouring countries into broad geographic areas on the basis of their similarity in terms of social, cultural, economic and political characteristics.

The country classification used in this report is listed on page 66. In the tables in this publication some minor groups have been combined due to space limitations. For further information about SACC and for copies of the classification please contact the ABS.

Following amendments to Section 17(a) of the *Acts Interpretation Act 1901—1973* effective 1 July 1992, the territories of Christmas Island and Cocos (Keeling) Islands now form part of geographic Australia. The Jervis Bay Territory has always been a territory in its own right, and following self-government for the ACT it is no longer included with the ACT for statistical

purposes. These three territories are classified as the ninth state/territory of Australia.

'Australian External Territories' comprise the statistical units of Norfolk Island and 'Other Australian External Territories'.

Former Czechoslovakia

Separate data for the federation of the Czech republic and Slovakia has been available since January 1993. Consequently the separate figures for the individual countries were likely to be significantly understated.

Former Yugoslavia

Separate data for the federation of Serbia and Montenegro has been available since July 1998, Montenegro declared its independence on 3 June 2006. Prior to July 1998 the Former Yugoslavia nfd component was a substantial proportion of total Former Yugoslavia. Consequently the separate figures for the individual countries were likely to be significantly understated.

Former USSR

The separate figures for component countries of the former USSR are likely to be understated and should be used with caution.

Ethiopia and Eritrea

Caution is also required when using data for Ethiopia. This figure may include arrivals born in Eritrea since settlers who reported Ethiopia as their country of birth were coded as such, despite the fact that they may have been born in what is now called Eritrea.

Additional data

The Program Statistics and Monitoring Section offers a range of tables not published in this report, upon request. Statistics on settler arrivals can be cross-tabulated with the following data items:

- country of birth
- country of citizenship
- country of last residence
- state/territory of intended residence
- sex
- age
- migration category
- occupation
- applicant type (primary, secondary)

More complex requests for data and requests for multiple years do incur a charge.

Symbols and abbreviations

The following symbols or abbreviations are used throughout this publication:

excl	=	excluding
na	=	not available
nec	=	not elsewhere classified
nei	=	not elsewhere included
nfd	=	not further defined
nya	=	not yet available
p	=	preliminary
r	=	revised
-	=	nil
..	=	not applicable

Rounding

Where figures have been rounded, differences may occur between sums of the component items and totals.

Country classification

OCEANIA AND ANTARCTICA

Australia (includes External Territories)

Australia
Norfolk Island
Australian External Territories, nec

New Zealand

New Zealand

Melanesia

New Caledonia
Papua New Guinea
Solomon Islands
Vanuatu

Micronesia

Guam
Kiribati
Marshall Islands
Micronesia, Federated States of
Nauru
Northern Mariana Islands
Palau

Polynesia (excludes Hawaii)

Cook Islands
Fiji
French Polynesia
Niue
Pitcairn Island
Samoa
Samoa, American
Tokelau
Tonga
Tuvalu
Wallis and Futuna
Polynesia (excludes Hawaii), nec

Antarctica

Adélie Land (France)
Argentinian Antarctic Territory
Australian Antarctic Territory
British Antarctic Territory
Chilean Antarctic Territory
Queen Maud Land (Norway)
Ross Dependency (New Zealand)

NORTH-WEST EUROPE

United Kingdom

Channel Islands
England
Isle of Man
Northern Ireland
Scotland
Wales

Ireland

Ireland

Western Europe

Austria
Belgium
France
Germany
Liechtenstein
Luxembourg
Monaco
Netherlands
Switzerland

Northern Europe

Aland Islands
Denmark
Faroe Islands
Finland
Greenland
Iceland
Norway
Sweden

SOUTHERN AND EASTERN EUROPE

Southern Europe

Andorra
Gibraltar
Holy See
Italy
Malta
Portugal
San Marino
Spain

South Eastern Europe

Albania
Bosnia and Herzegovina
Bulgaria
Croatia
Cyprus
Former Serbia and Montenegro
Former Yugoslav Republic of Macedonia
Greece
Kosovo
Moldova
Montenegro
Romania
Serbia
Slovenia
Yugoslavia, Federal Republic of

Eastern Europe

Belarus
 Czech Republic
 Estonia
 Hungary
 Latvia
 Lithuania
 Poland
 Russian Federation
 Slovakia
 Ukraine

NORTH AFRICA AND THE MIDDLE EAST**North Africa**

Algeria
 Egypt
 Libya
 Morocco
 Spanish North Africa
 Sudan
 Tunisia
 Western Sahara

Middle East

Bahrain
 Gaza Strip and West Bank
 Iran
 Iraq
 Israel
 Jordan
 Kuwait
 Lebanon
 Oman
 Qatar
 Saudi Arabia
 Syria
 Turkey
 United Arab Emirates
 Yemen

SOUTH-EAST ASIA**Mainland South-East Asia**

Burma (Myanmar)
 Cambodia
 Laos
 Thailand
 Vietnam

Maritime South-East Asia

Brunei Darussalam
 Indonesia
 Malaysia
 Philippines
 Singapore

NORTH-EAST ASIA**Chinese Asia (includes Mongolia)**

China (excludes SARs and Taiwan)
 Hong Kong (SAR of China)
 Macau (SAR of China)
 Mongolia
 Taiwan

Japan and the Koreas

Japan
 Korea, Democratic People's Republic of (North)
 Korea, Republic of (South)

SOUTHERN AND CENTRAL ASIA**Southern Asia**

Bangladesh
 Bhutan
 India
 Maldives
 Nepal
 Pakistan
 Sri Lanka

Central Asia

Afghanistan
 Armenia
 Azerbaijan
 Georgia
 Kazakhstan
 Kyrgyzstan
 Tajikistan
 Turkmenistan
 Uzbekistan

AMERICAS**Northern America**

Bermuda
 Canada
 St Pierre and Miquelon
 United States of America

South America

Argentina
 Bolivia
 Brazil
 Chile
 Colombia
 Ecuador
 Falkland Islands
 French Guiana
 Guyana
 Paraguay
 Peru
 Suriname
 Uruguay
 Venezuela
 South America, nec

Central America

Belize
 Costa Rica
 El Salvador
 Guatemala
 Honduras
 Mexico
 Nicaragua
 Panama

Caribbean

Anguilla
 Antigua and Barbuda
 Aruba
 Bahamas
 Barbados
 Cayman Islands
 Cuba
 Dominica
 Dominican Republic
 Grenada
 Guadeloupe
 Haiti
 Jamaica
 Martinique
 Montserrat
 Netherlands Antilles
 Puerto Rico
 St Barthelemy
 St Kitts and Nevis
 St Lucia
 St Martin (French part)
 St Vincent and the Grenadines
 Trinidad and Tobago
 Turks and Caicos Islands
 Virgin Islands, British
 Virgin Islands, United States

SUB-SAHARAN AFRICA**Central and West Africa**

Benin
 Burkina Faso
 Cameroon
 Cape Verde
 Central African Republic
 Chad
 Congo
 Congo, Democratic Republic of
 Côte d'Ivoire
 Equatorial Guinea
 Gabon
 Gambia
 Ghana
 Guinea
 Guinea-Bissau
 Liberia
 Mali
 Mauritania
 Niger

Nigeria
 Sao Tomé and Príncipe
 Senegal
 Sierra Leone
 Togo

Southern and East Africa

Angola
 Botswana
 Burundi
 Comoros
 Djibouti
 Eritrea
 Ethiopia
 Kenya
 Lesotho
 Madagascar
 Malawi
 Mauritius
 Mayotte
 Mozambique
 Namibia
 Réunion
 Rwanda
 St Helena
 Seychelles
 Somalia
 South Africa
 Swaziland
 Tanzania
 Uganda
 Zambia
 Zimbabwe
 Southern and East Africa, nec

Statistical publications

The Department of Immigration and Citizenship produces a number of regular and special publications providing statistics which are relevant to the formulation and assessment of immigration policies and procedures. Some of the publications referred to below, are available from the Department's website: <http://www.immi.gov.au/media/statistics> along with other migration information.

Migrant data can also be obtained from the Australian Bureau of Statistics (ABS). See the ABS website <http://www.abs.gov.au> for more details.

Regular publications

- Immigration Update* (produced biannually)
- Settler Arrivals* (produced annually)
- Emigration* (re-commenced 2005-2006, produced annually)
- Population Flows — Immigration Aspects* (produced annually)

