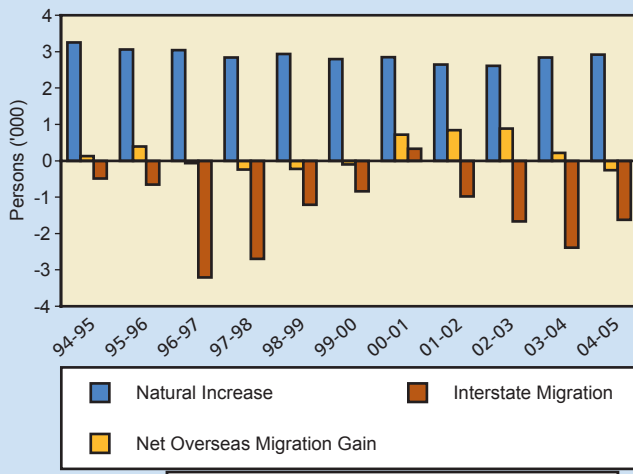


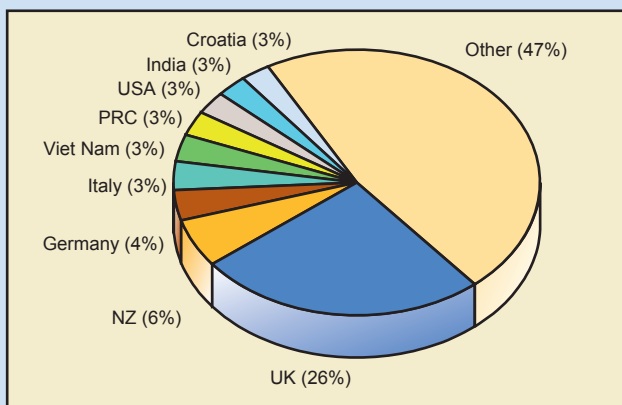
# Australian Capital Territory

**Fig. 8-85: Components of Population Change, ACT**



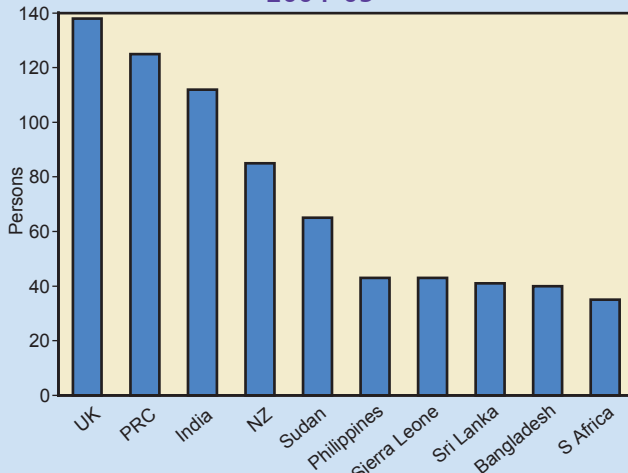
Source Data: ABS Australian Demographic Statistics (3101.0)

**Fig. 8-86: Overseas-born Population by Major Countries of Birth, ACT 2001 Census**



Source Data: ABS 2001 Census of Population and Housing

**Fig. 8-87: Top Ten Source Countries, ACT 2004-05**



Source Data: OAD Statistics, DIMIA

## Population Size and Change

At the 2001 Census, around 1.7 per cent of Australia's population and 1.6 per cent of Australia's overseas-born population lived in the ACT. At that time the overseas-born represented 23.1 per cent of Australia's total population and approximately 22.6 per cent of the population of the ACT.

In 2004-05, the population of the ACT increased by 1,042 people, giving the ACT a 0.32 per cent growth rate in those 12 months. The Territory gained 2,917 people through natural increase, but is estimated to have lost 255 persons through net overseas migration and lost a further 1,620 people through net interstate migration.

ACT residents departing interstate moved largely to New South Wales (54.2 per cent of departures in 2004-05) and Queensland (20.3 per cent). Interstate arrivals to the ACT came predominantly from New South Wales (58.5 per cent of arrivals in 2004-05), and to a lesser extent Queensland (15.1 per cent) and Victoria (12.3 per cent).

## Country of Birth of Settler Arrivals

At the 2001 Census, persons from the United Kingdom accounted for 25.6 per cent of the ACT's overseas-born population. New Zealand, Germany, Italy, Vietnam and the PRC were the next largest birthplace groups.

There were 1,217 settler arrivals to the ACT in 2004-05. As with some other states and the Northern Territory, there has been some change in the relative importance of source countries in recent years. The proportion of settlers from the United Kingdom has fallen from 17.1 per cent in 1986-87 to 11.3 per cent in 2004-05.

In 2004-05, the top five countries of birth of settlers arriving in the ACT were the United Kingdom (138 persons), the PRC (125 persons), India (112 persons), New Zealand (85 persons) and the Sudan (65 persons). This compares closely with the top source countries for Australia: the United Kingdom, New Zealand, the PRC, India and Sudan.

There were more female settler arrivals (53.9 per cent) than male. The distribution of females and males across source countries was relatively even, except for Thailand (1 male and 15 females), Canada (4 males and 12 females), Vietnam (6 males and 12 females) and the PRC (45 males and 80 females).

## Settler Arrivals to the Australian Capital Territory by Migration Stream

The numbers of settler arrivals in the Australian Capital Territory in each migration stream has changed in recent years. Over the past decade, Family Stream settlers have decreased while Skill Stream settlers have increased.

Of the 1,217 arrivals in the ACT in 2004–05, Skill Stream settler arrivals were the largest stream, accounting for 40.3 per cent. Family Stream settler arrivals represented 33.1 per cent of the Territory's settler intake, Humanitarian Program arrivals 14.1 per cent and New Zealand citizens 11.2 per cent.

Females represented over half of Family settler arrivals (62.0 per cent). However, females only comprised 50.8 per cent of Skill Stream entrants, 46.8 per cent of Humanitarian and 47.8 per cent of New Zealand citizens.

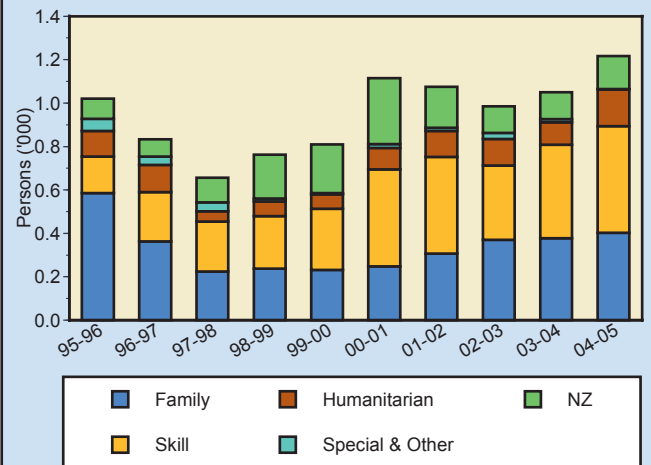
## Family Stream Settler Arrivals

In 2004–05, the ACT received 403 Family Stream settler arrivals.

High proportions of Family settler arrivals who arrived in the ACT were born in the United Kingdom (13.2 per cent) and the PRC (12.7 per cent).

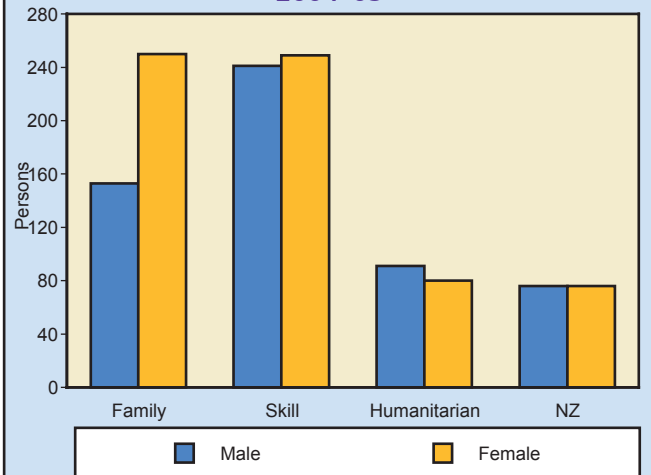
Just under 60 per cent of Family settler arrivals to the ACT in 2004–05 entered either as Spouse (50 persons) or Spouse Provisional (189 persons). Fiancés accounted for a further 17.9 per cent of Family settler arrivals (72 persons).

Fig. 8-88: Settler Arrivals by Stream, ACT



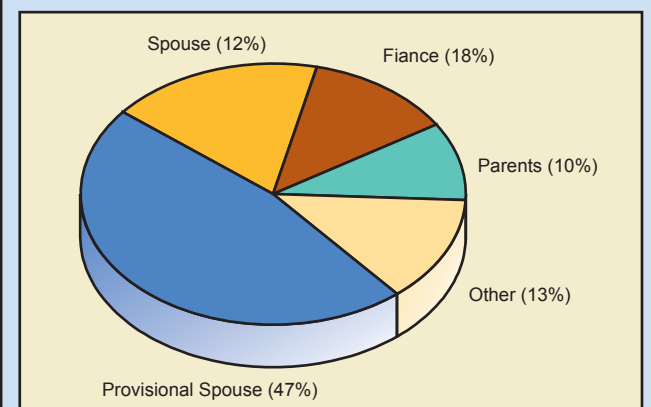
Source Data: OAD Statistics, DIMIA

Fig. 8-89: Settler Arrivals by Stream and Sex, ACT 2004–05

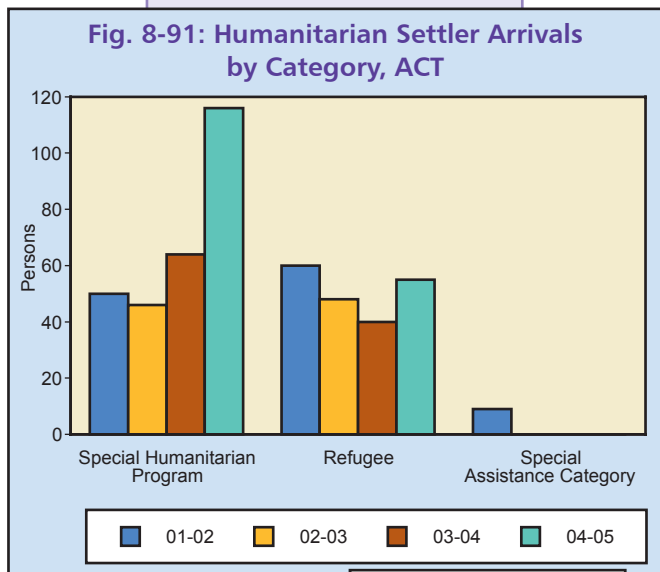


Source Data: OAD Statistics, DIMIA

Fig. 8-90: Family Stream Settler Arrivals by Category, ACT 2004–05



Source Data: OAD Statistics, DIMIA



### Humanitarian Settler Arrivals

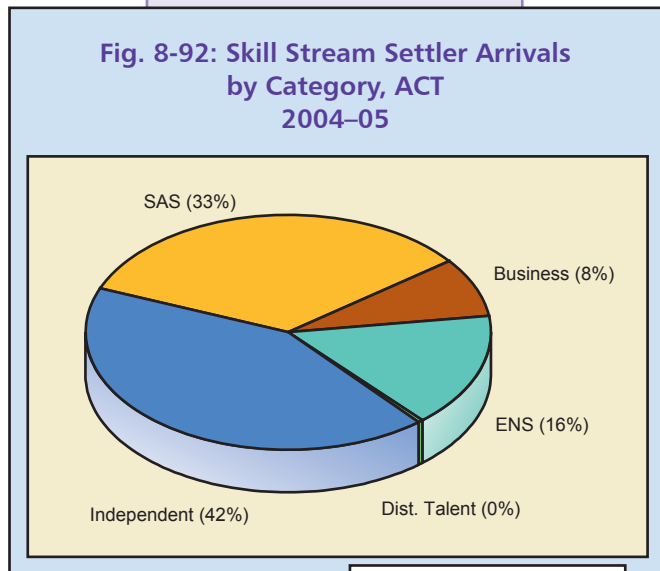
In 2004–05, the ACT received 171 Humanitarian settler arrivals. Of these, 116 people (67.8 per cent) were accepted under the Special Humanitarian Program and 55 people (32.2 per cent) as Refugees.

Of those settling in the ACT under the Humanitarian Program, 38.0 per cent were born in the Sudan and 25.1 per cent in Sierra Leone.

### Skill Stream Settler Arrivals

The ACT received 490 Skill Stream settler arrivals in 2004–05. The largest number of these settlers (207 persons) entered under the Independent category. Skilled-Australian Sponsored category entrants accounted for a further 164 arrivals, Employer Nomination Scheme for 77, Business for 40 and there were two Distinguished Talent settler arrivals.

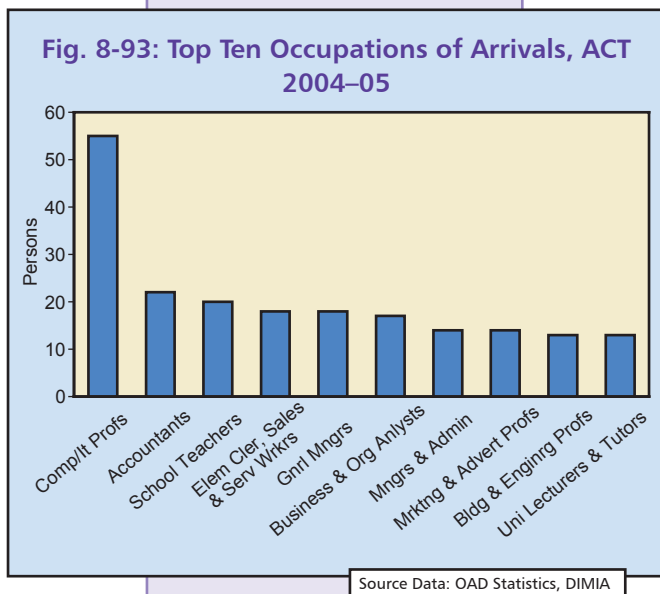
A large proportion of Skill Stream settler arrivals to the ACT were born in India (16.3 per cent), the United Kingdom (15.3 per cent), the PRC (14.5 per cent) and Bangladesh (6.7 per cent).



### Occupation of Settler Arrivals

In 2004–05, the top five occupations represented among settler arrivals for the ACT were computing professionals (55 persons), accountants (22 persons), school teachers (20 persons), general managers (18 persons) and elementary clerical, sales and service workers (18 persons).

By comparison, the top five occupations represented among settler arrivals for Australia as a whole in 2004–05 were computing professionals (5,197 persons), accountants (3,807 persons), managers & administrators (2,255 persons), elementary clerical, sales & service workers (2,181 persons) and registered nurses (1,677 persons).



## Labour Market Profile

Of the total settler arrivals who arrived in the ACT in 2004–05, 42.1 per cent were not in the labour force prior to migration, but were retired, dependent children, students or performed home duties.

Most persons who were in the labour force prior to migration were skilled (77.3 per cent). A further 10.5 per cent were semi-skilled, 4.6 per cent unskilled and 7.4 per cent were not in employment.

Persons born overseas make up 23.7 per cent of the Territory's labour force, which is just below the Australian proportion of 24.9 per cent.

## Unemployment Rates

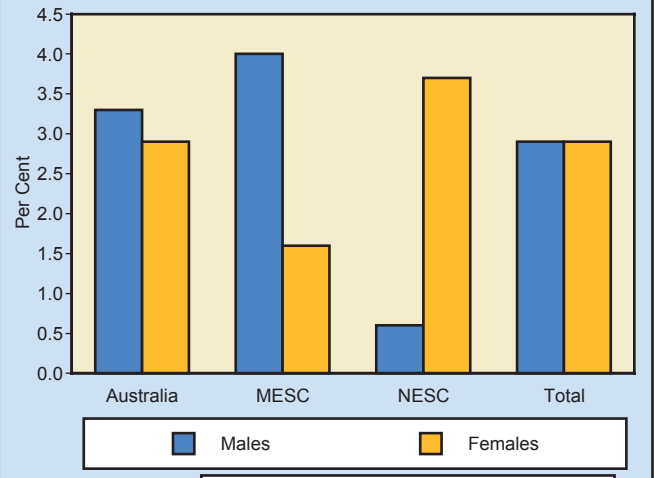
In August 2005, migrants from main English speaking countries (MESC) accounted for 8.3 per cent of the Territory's employed persons and 7.4 per cent of the unemployed. Migrants from non-English speaking countries (NESC) accounted for 15.6 per cent of the Territory's employed and 11.1 per cent of the unemployed.

The ACT had an unemployment rate of 2.9 per cent, compared with the Australian rate of 4.8 per cent. Australia-born persons had an unemployment rate of 3.1 per cent, NESC migrants 2.0 per cent and MESC migrants 2.8 per cent.

## Overseas Visitor Arrivals

In 2004–05, the Australian Capital Territory attracted 33,000 visitors or 0.9 per cent of visitors who nominated a main State of stay. The total number of overseas visitor arrivals to the ACT in 2004–05 increased by 15.5 per cent from 2003–04.

**Fig. 8-94: Unemployment Rates by Sex and Birthplace Group, ACT, August 2005**



**Fig. 8-95: Overseas Visitor Arrivals, ACT**

