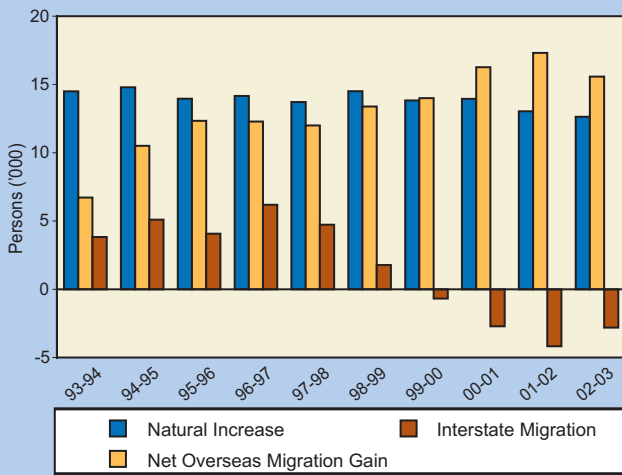


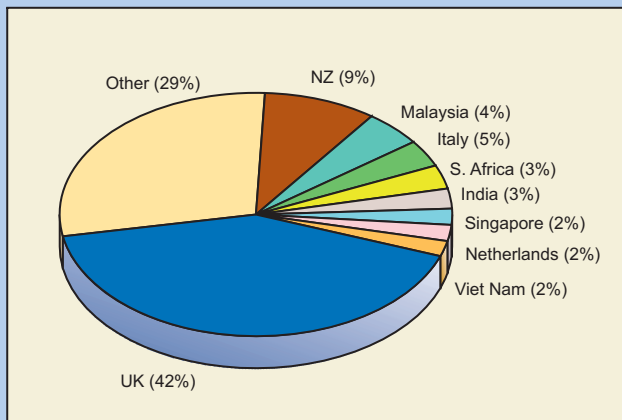
Western Australia

Fig. 8-52: Components of Population Change, WA



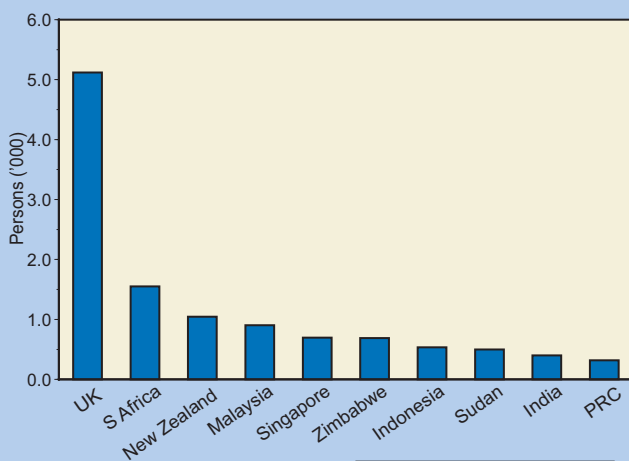
Source Data: ABS Australian Demographic Statistics (3101.0)

Fig. 8-53: Overseas-born Population by Major Countries of Birth, WA 2001 Census



Source Data: ABS 2001 Census of Population and Housing

Fig. 8-54: Top Ten Source Countries, WA 2003-04



Source Data: OAD Statistics, DIMIA

Population Size and Change

At the 2001 Census, around 9.7 per cent of Australia's population and 12.1 per cent of the overseas-born lived in Western Australia. At that time the overseas-born represented 23.1 per cent of Australia's total population and 28.5 per cent of the population of Western Australia.

In 2002-03, the population of Western Australia increased by an estimated 25,395 people, giving Western Australia a 1.32 per cent growth rate in those 12 months. Western Australia gained 12,630 people through natural increase and 15,575 people through net overseas migration. There is estimated to be a loss of 2,810 people from net interstate migration.

Net overseas migration saw a substantial decline in Western Australia in the early 1990s but has increased steadily since 1991-92. Net interstate migration has been on the decline in the last five years.

Western Australian residents departing interstate move mainly to New South Wales (23.2 per cent of all departures in 2002-03), Victoria (24.7 per cent) and Queensland (26.5 per cent). Interstate arrivals to Western Australia come mostly from New South Wales (27.0 per cent of arrivals), Victoria (23.9 per cent) and Queensland (22.3 per cent).

Country of Birth of Settler Arrivals

At the 2001 Census, those born in the United Kingdom accounted for 40.7 per cent of the State's overseas-born population. New Zealand, Italy, Malaysia and South Africa were the next largest birthplace groups.

Settler arrivals to Western Australia totalled 15,411 people. The proportion of settlers from the United Kingdom was 33.2 per cent of total settlers in 2003-04.

In 2003-04, the top five countries of origin of settler arrivals to Western Australia were the United Kingdom (5,120 persons), South Africa (1,550 persons), New Zealand (1,046 persons), Malaysia (903 persons) and Singapore (697 persons). This compares with the top source countries for Australia as a whole: the United Kingdom, New Zealand, the PRC, India and South Africa.

There were slightly more female settler arrivals (51.6 per cent) than male arrivals. The distribution of females and males across most major source countries was relatively even, except for the Thailand (33 males to 121 females), Viet Nam (49 males to 117 females) and the Philippines (71 males to 157 females).

Settler Arrivals to Western Australia by Migration Stream

The number of settler arrivals to Western Australia in each migration stream has changed significantly in recent years, with a much greater proportion of Skill Stream settlers than a decade ago. This has been at the expense of Family Stream settlers.

Of the 15,411 arrivals in Western Australia in 2003-04, Skill Stream settler arrivals were the largest stream, accounting for 63.9 per cent, followed by Family Stream (18.4 per cent). New Zealand citizens accounted for 8.3 per cent of arrivals, the Humanitarian Program for 8.1 per cent and Special Eligibility accounted for 0.3 per cent.

Over half of settler arrivals to Western Australia were female (51.6 per cent), which is similar to the Australian average (51.8 per cent).

Females were strongly represented in the Family Stream (62.2 per cent) but comprised less than half of the Skill and Humanitarian entrants (48.8 and 49.8 per cent respectively).

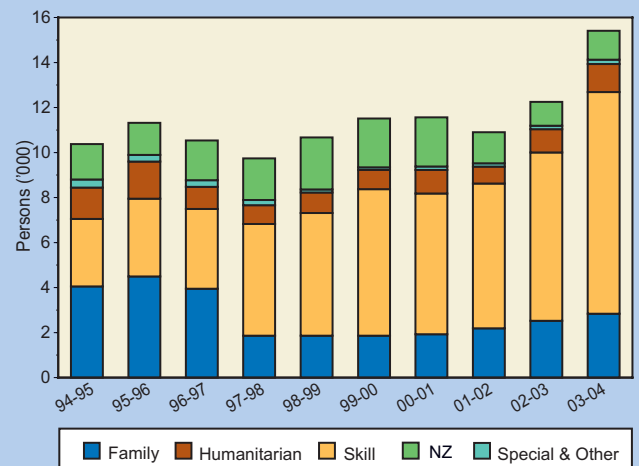
Family Stream Settler Arrivals

In 2003-04, Western Australia received 2,839 Family Stream settler arrivals.

High proportions of Family settler arrivals who arrived in Western Australia were born in the United Kingdom (23.8 per cent, compared with only 12.4 per cent for Australia), the PRC (6.6 per cent), Indonesia (6.5 per cent), the Philippines (5.6 per cent), and Viet Nam (5.2 per cent).

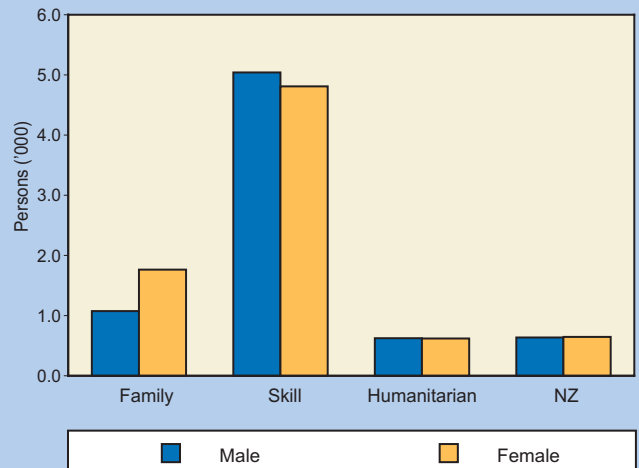
Nearly two-thirds of Family Stream settler arrivals to Western Australia in 2003-04 entered under either Spouse (461 persons) or Provisional Spouse (1,230 persons) categories. Significant numbers also entered as Fiances (534 persons) and Parents (289 persons).

Fig. 8-55: Settler Arrivals by Stream, WA



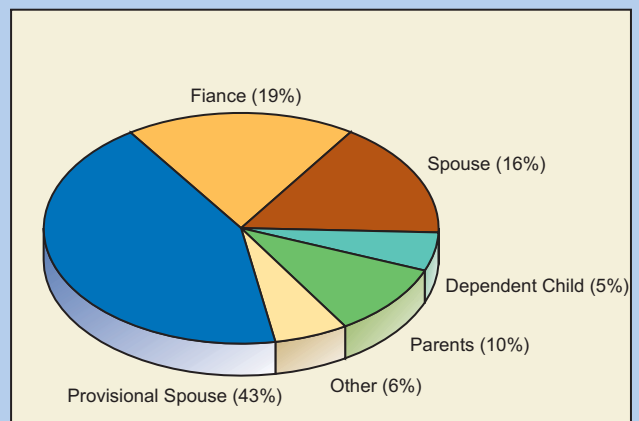
Source Data: OAD Statistics, DIMIA

Fig. 8-56: Settler Arrivals by Stream and Sex, WA, 2003-04



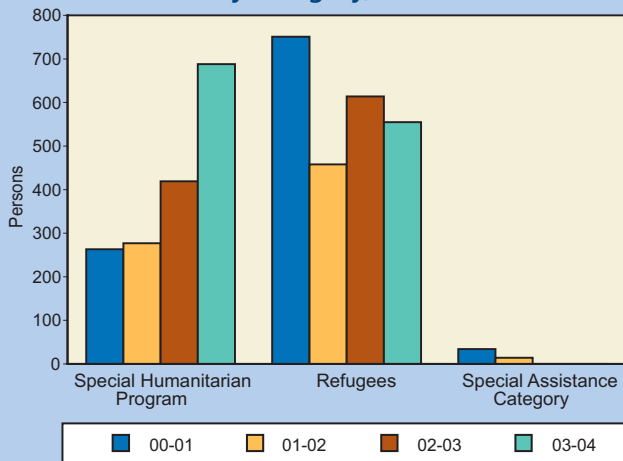
Source Data: OAD Statistics, DIMIA

Fig. 8-57: Family Stream Settler Arrivals by Category, WA 2003-04



Source Data: OAD Statistics, DIMIA

Fig. 8-58: Humanitarian Settler Arrivals by Category, WA



Source Data: OAD Statistics, DIMIA

Humanitarian Settler Arrivals

In 2003-04, Western Australia received 1,243 Humanitarian settler arrivals. Of these, 555 people (44.7 per cent) were accepted as Refugees and 688 people (55.3 per cent) were accepted under the Special Humanitarian Program.

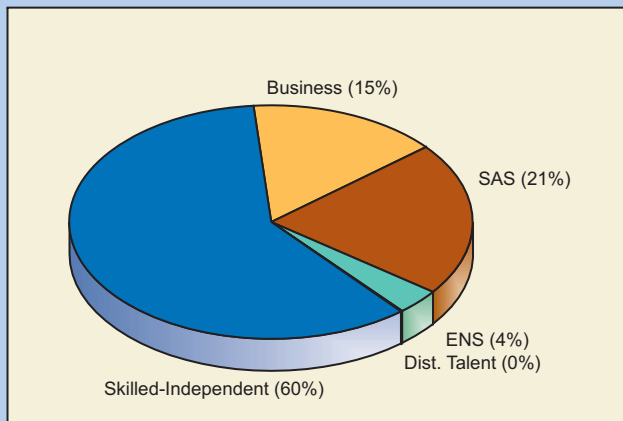
Of those settling in Western Australia under the Humanitarian Program, 39.9 per cent were born in the Sudan, 9.5 per cent in Afghanistan and 7.6 per cent in Iran.

Skill Stream Settler Arrivals

Western Australia received 9,850 Skill Stream settler arrivals in 2003-04. The largest number of these arrivals (5,881) were in the Independent category. Skilled-Australian Sponsored migrants accounted for 2099 people, Business settler arrivals for 1,508 and the Employer Nomination Scheme for 351. There were also 11 Distinguished Talents entrants.

Two birthplaces accounted for over half of all Skill Stream settler arrivals in 2003-04: the United Kingdom (43.1 per cent) and South Africa (13.8 per cent).

Fig. 8-59: Skill Stream Settler Arrivals by Category, WA 2003-04



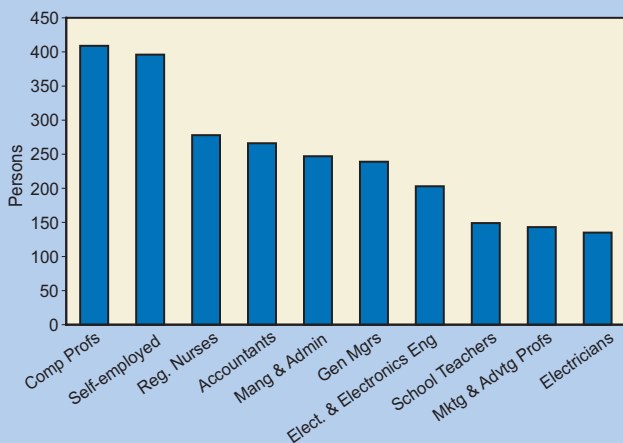
Source Data: OAD Statistics, DIMIA

Occupation of Settler Arrivals

In 2003-04, the top five occupations represented amongst settler arrivals to Western Australia were computing professionals (409 persons), self employed (396 persons), registered nurses (278 persons), accountants (266 persons) and managers and administrators (247 persons).

By comparison, the top five occupations represented amongst settler arrivals for Australia as a whole in 2003-04 were computer professionals (5,105 persons), accountants (1,867 persons), managers and administrators (1,840 persons), electrical and electronics engineers (1,679) and registered nurses (1,582).

Fig. 8-60: Top Ten Occupations of Arrivals, WA 2003-04



Source Data: OAD Statistics, DIMIA

Labour Market Profile

Of the total settler arrivals in Western Australia in 2003-04, 47.2 per cent were not in the labour force prior to migration, but were retired, dependent children, students or performed home duties.

Most persons who were in the labour force prior to migration were skilled (79.6 per cent). A further 10.6 per cent were semi-skilled, 3.4 per cent unskilled and 6.4 per cent were not in employment.

Persons born overseas make up 31.0 per cent of the Western Australia labour force, which is well above the Australian proportion of 24.9 per cent.

Unemployment Rates

In August 2004, migrants from MESC accounted for 19.4 per cent of the State's employed persons and 14.1 per cent of the unemployed. Migrants from NESC accounted for 11.7 per cent of the State's employed and 15.6 per cent of the unemployed.

Western Australia had an unemployment rate of 4.7 per cent, just lower than the Australian rate of 5.4 per cent. Australia-born persons had an unemployment rate of 4.8 per cent, NESC-born 6.2 per cent and MESC-born 3.5 per cent.

Overseas Visitor Arrivals

In 2003-04, Western Australia attracted 376,857 visitors or 10.7 per cent of visitors who nominated a main State of stay. The number of overseas visitor arrivals to the State increased moderately by 5.2 per cent from the previous year.

Fig. 8-61: Unemployment Rates by Sex and Birthplace Group, WA August 2004

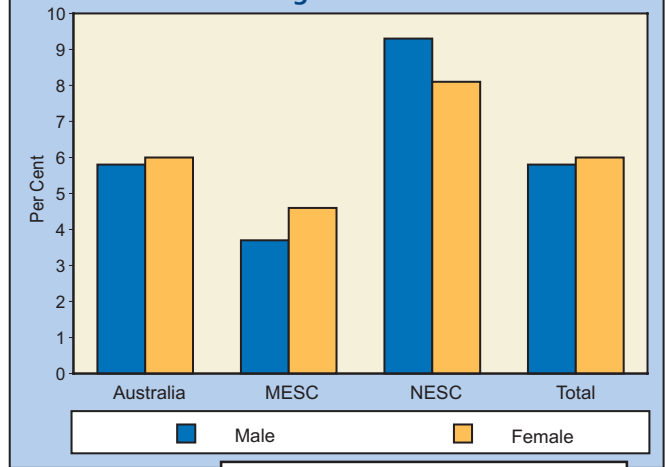


Fig. 8-62: Overseas Visitor Arrivals, WA

