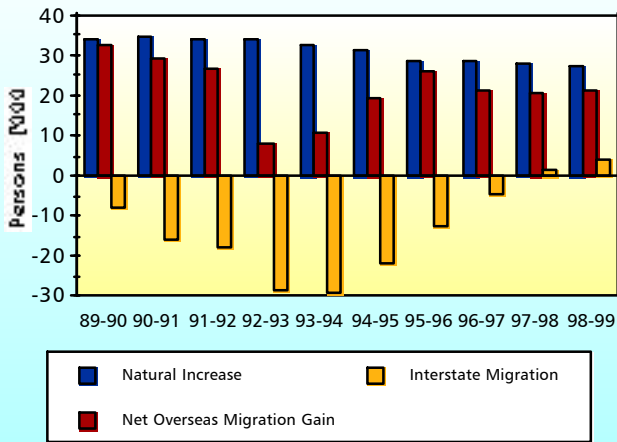


Victoria

Fig. 6-19: Components of Population Change, Vic



Source Data: ABS Australian Demographic Statistics (3101.0)

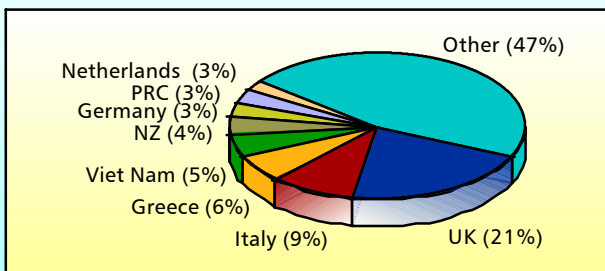
Population Size and Change

As at the 1996 Census, over one quarter of Australia's population and 26.9 per cent of the overseas-born lived in Victoria. At that time the overseas-born represented 23.3 per cent of Australia's total population and approximately 25.1 per cent of the population of Victoria.

In 1998-99, the population of Victoria increased by 52,700 people, giving Victoria a 1.1 per cent growth rate in those 12 months. The rate of population growth in Victoria has increased steadily over the last six years and is just above the national average. Victoria has gained 27,076 people through natural increase, 21,602 people through net overseas migration and 3,975 people through net interstate migration.

Most Victorian residents departing interstate went to New South Wales (34.9 per cent of departures in 1998-99) and Queensland (30.0 per cent). Interstate arrivals are largely from New South Wales (35.7 per cent), Queensland (26.6 per cent) and South Australia (13.1 per cent).

Fig. 6-20: Overseas-born Population by Major Countries of Birth, Vic 1996 Census



Source Data: ABS 1996 Census of Population and Housing

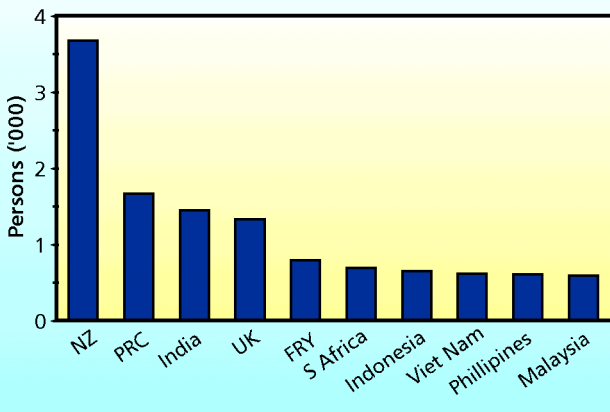
Country of Birth of Settler Arrivals

At the 1996 Census, persons from the United Kingdom accounted for 20.8 per cent of the overseas-born population of the State. Italy, Greece and Viet Nam were the next largest birthplace groups.

There has been some change in the relative importance of source countries in recent years with the proportion of settlers from the United Kingdom falling by more than 50 per cent from 14.4 per cent in 1986-87 to 6.3 per cent in 1998-99. While still low, in 1999-2000 the proportion of settlers from the United Kingdom had risen slightly to 6.8 per cent.

The proportion of settler arrivals from Asia increased from 38.1 per cent in 1986-87 to 58.7 per cent in 1990-91. The proportion has since declined to 39.5 per cent in 1999-2000.

Fig. 6-21: Top Ten Source Countries, Vic 1999-00



Settler arrivals to Victoria in 1999-2000 totalled 19,319. The top five countries of origin of settler arrivals to Victoria were New Zealand (3,663 persons), the PRC (1,651 persons), India (1,435 persons), the United Kingdom (1,312 persons) and the Federal Republic of Yugoslavia (780 persons). This compares with the top source countries for Australia as a whole: New Zealand, the United Kingdom, the PRC, South Africa and India.

There were more female settler arrivals (51.2 per cent) than males. The distribution of females and males across most major source countries was similar, except Viet Nam (67.9 per cent females), the Philippines (62.1 per cent) and the PRC (57.1 per cent). On the other hand, there were more male than female settler arrivals from the United Kingdom (44.4 per cent).

Settler Arrivals in Victoria by Migration Stream

The distribution of settlers arriving in Victoria by migration stream has changed over recent years. With the exception of New Zealand citizen arrivals, compared with 1988–89 there are now fewer settlers in all streams.

Of the 19,319 arrivals in Victoria in 1999–2000, the Skill Stream became the largest stream (32.8 per cent) increasing by 29.3 per cent from 1998–99. Family arrivals represented 25.6 per cent of the State’s intake (down from 31.5 per cent in 1998–99), Humanitarian Program arrivals 11.0 per cent, 29.2 per cent were from New Zealand, and the remaining 1.4 per cent of arrivals were Special Eligibility and other non visaed entrants.

More than half of settler arrivals to Victoria in 1999–2000 were female (51.2 per cent), compared with the Australian proportion of 50.9 per cent. Females were strongly represented in the Family Stream (59.7 per cent) but were less than half of the entrants in the Skill Stream (47.4 per cent). Females made up 48.8 per cent of Humanitarian settlers to Victoria in 1999–2000.

Family Stream Settler Arrivals

In 1999–2000, Victoria received 4,937 Family settler arrivals, a decrease of 9.2 per cent from the previous year.

High proportions of Family settlers arriving in Victoria came from the PRC (15.4 per cent), Viet Nam (10.5 per cent), the United Kingdom (8.7 per cent), the Philippines (6.1 per cent) and Lebanon (4.3 per cent).

Over 60 per cent of Family settlers who arrived in Victoria in 1999–2000 entered under Spouse (589 persons) or Spouse Provisional (2,616 persons) visas. Fiances were the next largest category (793 persons) followed by Dependent Children (237 persons) and Designated Parent (191 persons).

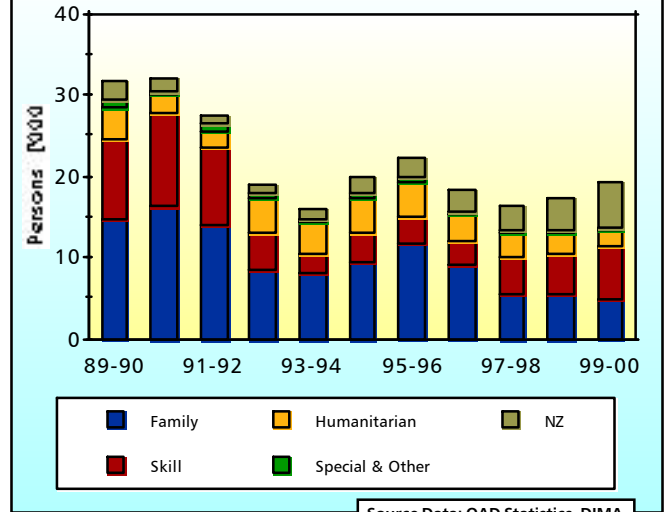
Humanitarian Settler Arrivals

In 1999–2000, Victoria received 2,122 Humanitarian Program settler arrivals, a 25.4 per cent decrease compared with 1998–99. Of the 1999–2000 Humanitarian Program arrivals, 186 people (8.8 per cent) were accepted under the Special Assistance Category, 909 people (42.8 per cent) under the Special Humanitarian Program and 1,027 people (48.4 per cent) as Refugees.

Women accounted for 49.5 per cent of the Special Assistance Category, 49.4 per cent of the Special Humanitarian Program and 48.1 per cent of Refugees.

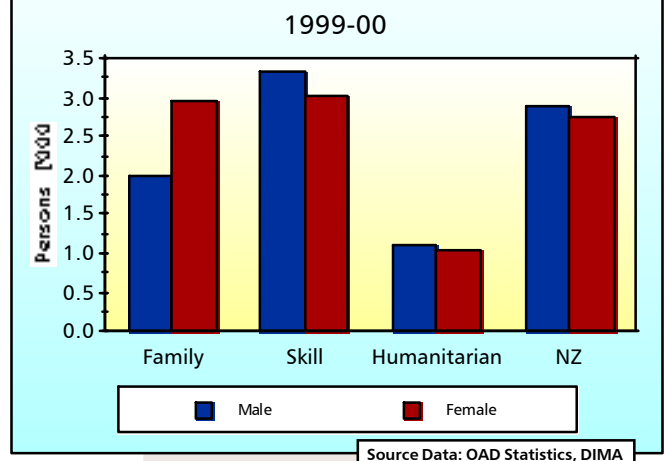
Of those settling under the Special Assistance Category, 36.0 per cent were from the Federal Republic of Yugoslavia and 16.1 per cent were from Bosnia-Herzegovina. Special Humanitarian settler arrivals came primarily from the Federal Republic of Yugoslavia (27.5 per cent), Afghanistan (14.7 per cent) and Iraq (14.4 per cent). Iraq represented 27.5 per cent of refugees settled in Victoria in 1999–2000. Under the Women At Risk category, 80 people were settled in Victoria.

Fig. 6-22: Settler Arrivals by Stream, Vic



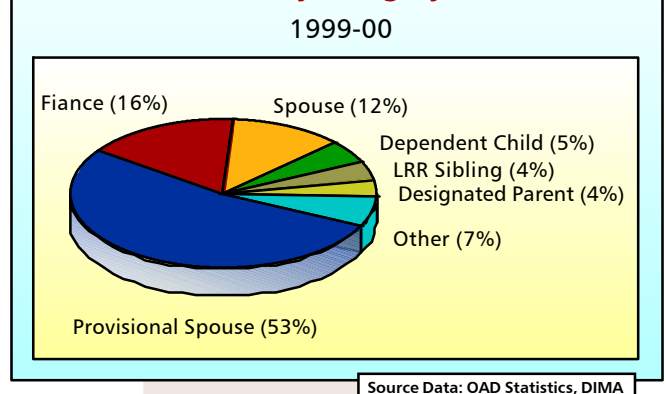
Source Data: OAD Statistics, DIMA

Fig. 6-23: Settler Arrivals by Stream and Sex, Vic 1999-00

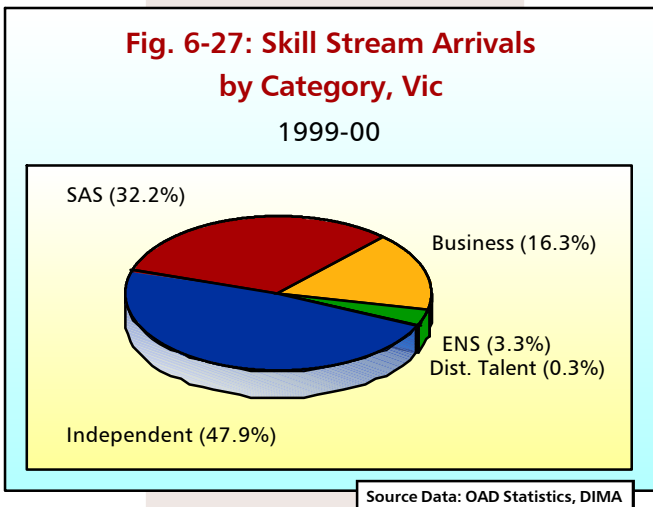
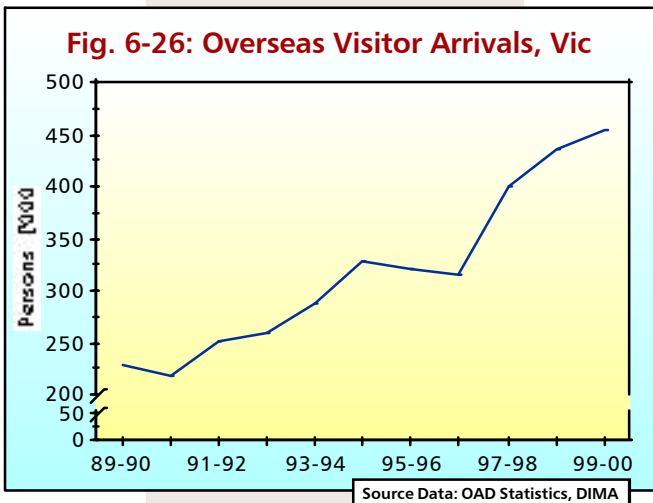
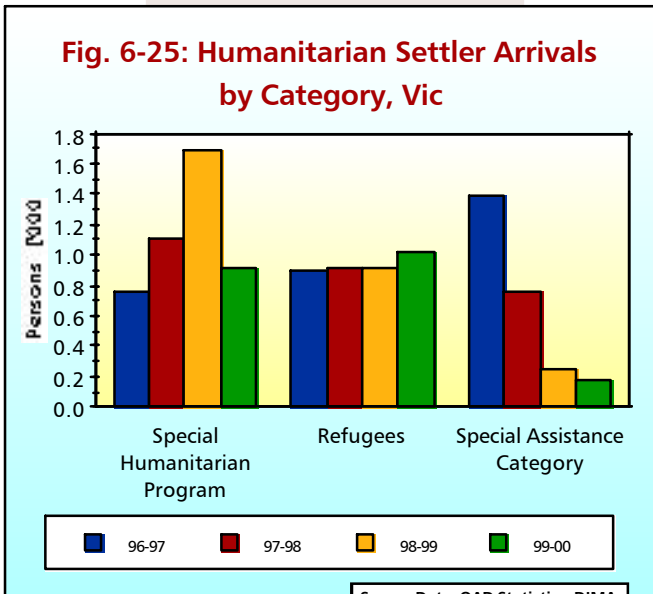


Source Data: OAD Statistics, DIMA

Fig. 6-24: Family Stream Settler Arrivals by Category, Vic 1999-00



Source Data: OAD Statistics, DIMA



Overseas Visitor Arrivals

In 1999–2000, Victoria attracted 453,832 visitors or 13.5 per cent of visitors who nominated a main State of stay. This makes Victoria the third most preferred destination of overseas visitors after New South Wales and Queensland.

Although the number of visitors to Victoria has increased, Victoria's share of the total overseas visitor arrivals to Australia has declined slightly from 14.0 per cent in 1998–99 to 13.5 per cent in 1999–2000.

Skill Stream Settler Arrivals

Victoria received 6,333 Skill Stream settler arrivals in 1999–2000, an increase of 29.3 per cent over the number received in 1998–99. Independent settler arrivals accounted for 3,032 people, Skill-Australian Sponsored for 2,039 people and Business entrants accounted for 1,030 people. There were also 211 Employer Nomination settlers and 21 Distinguished Talents settler arrivals.

Over half of Skill Stream settler arrivals to Victoria came from five countries: India (1,086 persons), the United Kingdom (632 persons), the PRC (622 persons), South Africa (577 persons) and Indonesia (564 persons).

Skill Stream settlers from India entered mainly under the Independent (59.6 per cent) and Skill-Australian Sponsored (39.7 per cent) categories. Those born in the United Kingdom entered mostly under the Independent (58.5 per cent) and the Skill-Australian Sponsored (30.9 per cent) categories.

Women accounted for 46.7 per cent of Independent settlers, 47.6 per cent of the Skill-Australian Sponsored settlers and 49.4 per cent of Business settlers.

Occupation of Settler Arrivals

In 1999–2000, the top five occupations represented among settler arrivals for Victoria were computer professionals (453 persons), general managers (374) accountants (369 persons), managers and administrators (260 persons) and, elementary clerical, sales and service workers (260).

By comparison, the top five occupations represented among settler arrivals for Australia as a whole in 1999–2000 were general managers (1,943 persons), computer professionals (1,778 persons), accountants (1,694 persons), elementary clerical, sales and service workers (1,405 persons) and, managers and administrators (1,264 persons).

Labour Market Profile

Of total settler arrivals to Victoria in 1999–2000, 43.8 per cent were not in the labour force prior to migration, but were retired, dependent children or had performed home duties.

Most persons who were in the labour force prior to migration were skilled (66.9 per cent). A further 15.2 per cent were semi-skilled, 7.6 per cent unskilled and 10.4 per cent were not in employment.

Persons born overseas make up 24.8 per cent of the Victorian labour force which is slightly above the Australian proportion of 24.5 per cent.

Unemployment Rates

Migrants from main English speaking countries (MESC) accounted for 8.0 per cent of the State's employed persons and 6.5 per cent of the unemployed. Migrants from non-English speaking countries (NESC) accounted for 16.6 per cent of the State's employed persons and 22.0 per cent of the unemployed.

In August 2000, Victoria had an unemployment rate of 6.1 per cent, equal to the national rate. In Victoria, Australian-born persons had an unemployment rate of 5.8 per cent, NESC migrants 7.9 per cent and MESC migrants 4.9 per cent.

Australian-born males had a higher unemployment rate than Australian-born females, while both NESC males and MESC males had lower unemployment rates than their female counterparts.

Fig. 6-28: Top Ten Occupations of Arrivals, Vic

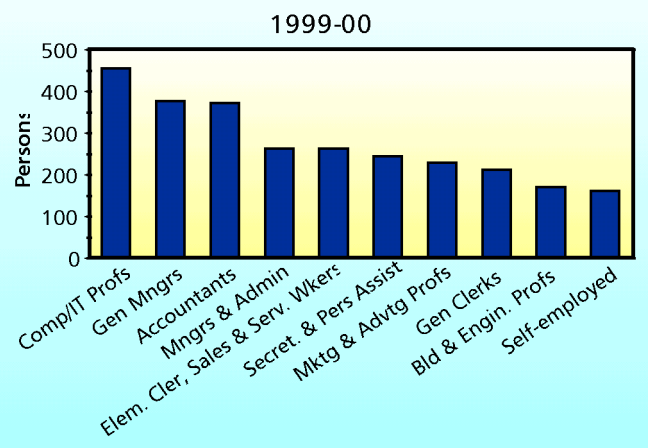


Fig. 6-29: Unemployment Rates by Sex and Birthplace Group, Vic

