

SETTLER ARRIVALS
1995-96 to 2005-06
Australia
States and Territories

© Commonwealth of Australia 2006

ISSN 1034-5051

This work is copyright.

Apart from any use as permitted under the Copyright Act 1968, no part may be reproduced by any process without prior written permission from the Commonwealth available from the Department of Communications, Information Technology and the Arts.

Requests and inquiries concerning reproduction and rights should be addressed to the Commonwealth Copyright Administration, Intellectual Property Branch, Department of Communications, Information Technology and the Arts, GPO Box 2154, Canberra ACT 2601.

TABLE OF CONTENTS

CONTENTS

LIST OF GRAPHS

Figure 1	STATES AND TERRITORIES OF INTENDED RESIDENCE 1986-87 TO 2005-06 AS A PERCENTAGE OF TOTAL SETTLER ARRIVALS	1
-----------------	--	----------

TABLES

AUSTRALIA **3**

Table 1.1	States and Territories of Intended Residence, Settler Arrivals 1985-86 to 2005-06	3
Table 1.2	Settler Arrivals by Birthplace, 1995-96 to 2005-06	4
Table 1.3	Settler Arrivals by State or Territory of Intended Residence and Sex, 1994-95 to 2005-06	11
Table 1.4	Permanent Movements by Age, 1994-95 to 2005-06	12
Table 1.5	Settler Arrivals by Eligibility Category, 1995-96 to 2005-06	13
Table 1.6	Settler Arrivals by Eligibility Category and State or Territory of Intended Residence, 1994-95 to 2005-06	14

NEW SOUTH WALES **16**

Table 2.1	Settler Arrivals by Birthplace, 1995-96 to 2005-06	16
-----------	--	----

VICTORIA **23**

Table 3.1	Settler Arrivals by Birthplace, 1995-96 to 2005-06	23
-----------	--	----

QUEENSLAND **30**

Table 4.1	Settler Arrivals by Birthplace, 1995-96 to 2005-06	30
-----------	--	----

SOUTH AUSTRALIA **37**

Table 5.1	Settler Arrivals by Birthplace, 1995-96 to 2005-06	37
-----------	--	----

WESTERN AUSTRALIA **43**

Table 6.1	Settler Arrivals by Birthplace, 1995-96 to 2005-06	43
-----------	--	----

TASMANIA **49**

Table 7.1	Settler Arrivals by Birthplace, 1995-96 to 2005-06	49
-----------	--	----

NORTHERN TERRITORY	53
Table 8.1 Settler Arrivals by Birthplace, 1995-96 to 2005-06	53
AUSTRALIAN CAPITAL TERRITORY	57
Table 9.1 Settler Arrivals by Birthplace, 1995-96 to 2005-06	57
EXPLANATORY NOTES	62
COUNTRY CLASSIFICATION (BASED ON SACC)	65
STATISTICAL PUBLICATIONS	68

Figure 1 STATES AND TERRITORIES OF INTENDED RESIDENCE 1986-87 TO 2005-06 AS A PERCENTAGE OF TOTAL SETTLER ARRIVALS

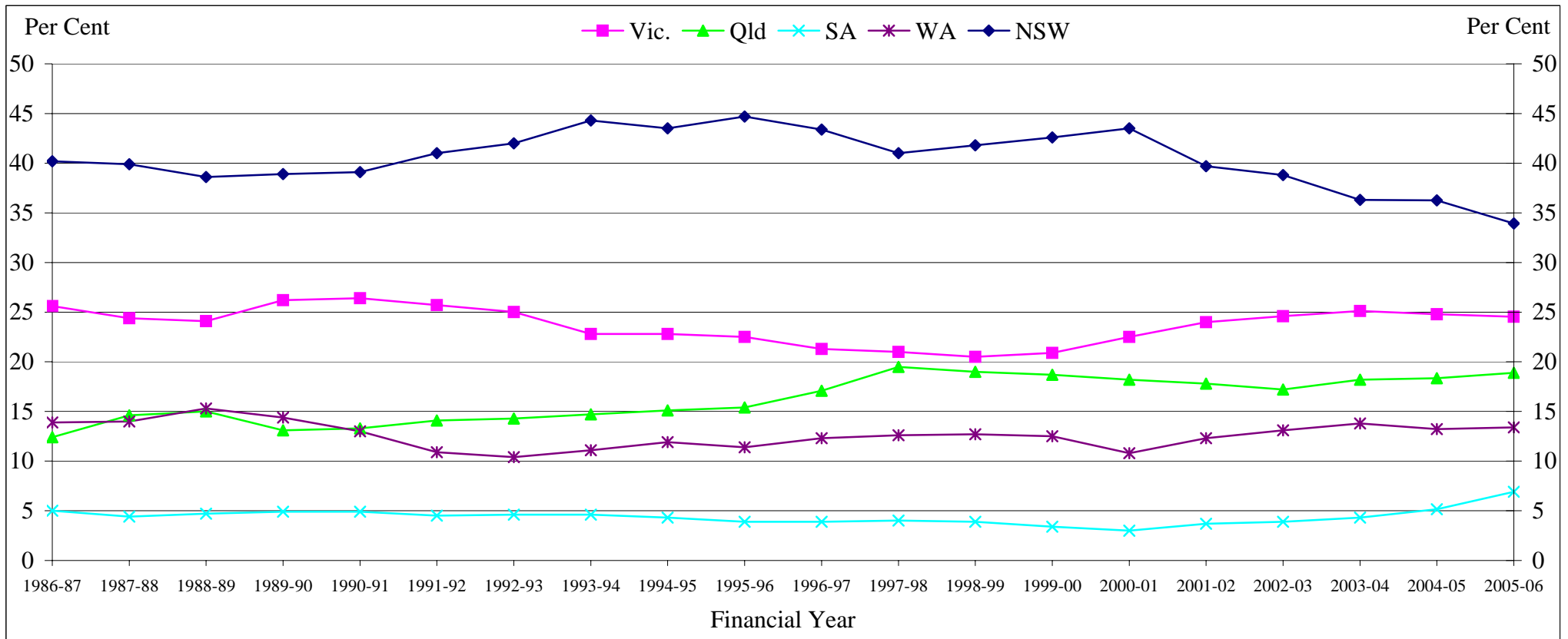


Figure 1 (continued) **STATES AND TERRITORIES OF INTENDED RESIDENCE 1986-87 TO 2005-06 AS A PERCENTAGE OF TOTAL SETTLER ARRIVALS**

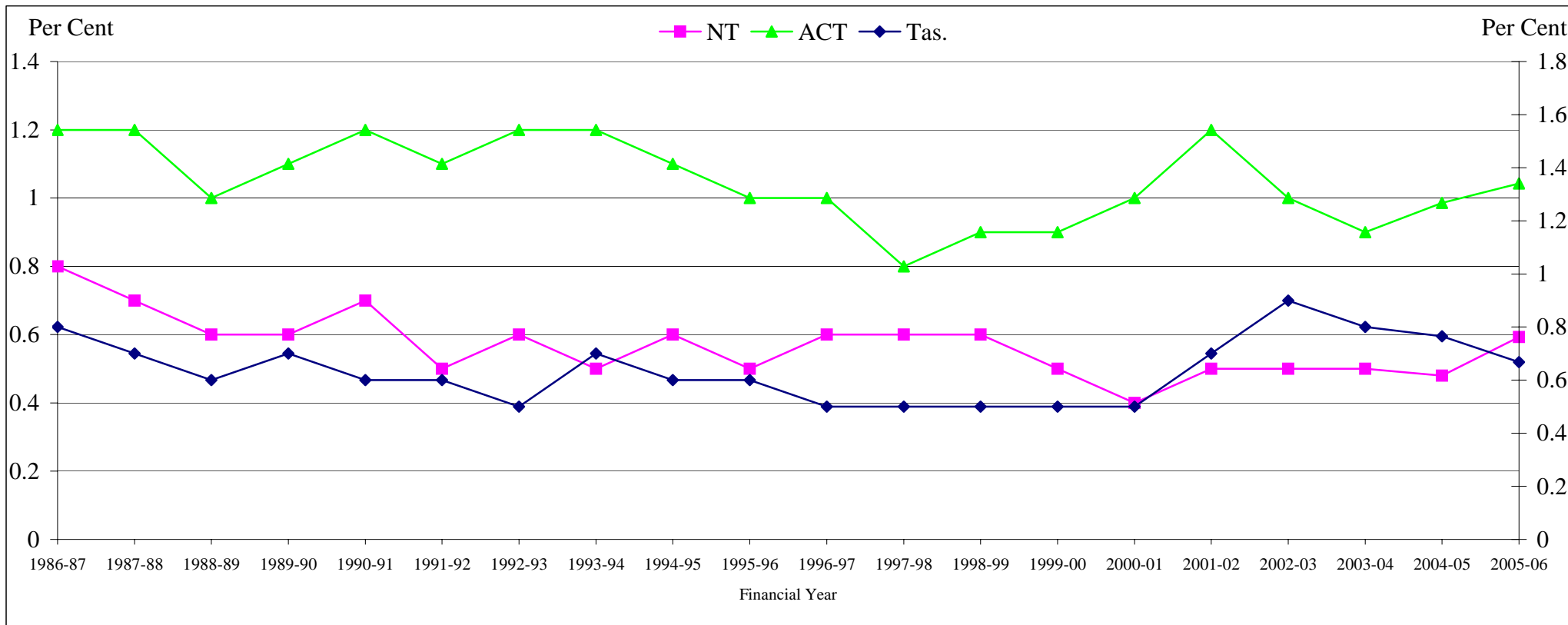


TABLE 1.1 STATES AND TERRITORIES OF INTENDED RESIDENCE, SETTLER ARRIVALS 1985-86 TO 2005-06

FINANCIAL																	
YEAR	NSW	%	Vic.	%	Qld.	%	SA	%	WA	%	Tas.	%	NT	%	ACT	%	Total (a)
1985-86	36,760	39.8	23,848	25.8	11,772	12.7	4,923	5.3	11,572	12.5	948	1.0	1,045	1.1	1,358	1.5	92,410
1986-87	45,569	40.2	29,007	25.6	14,042	12.4	5,701	5.0	15,710	13.9	938	0.8	941	0.8	1,401	1.2	113,309
1987-88	57,286	39.9	35,050	24.4	20,988	14.6	6,278	4.4	20,054	14.0	1,015	0.7	1,053	0.7	1,766	1.2	143,490
1988-89	56,065	38.6	35,024	24.1	21,780	15.0	6,867	4.7	22,278	15.3	846	0.6	927	0.6	1,523	1.0	145,316
1989-90	47,153	38.9	31,788	26.2	15,922	13.1	5,898	4.9	17,512	14.4	864	0.7	733	0.6	1,343	1.1	121,227
1990-91	47,569	39.1	32,071	26.4	16,243	13.3	5,963	4.9	15,819	13.0	709	0.6	825	0.7	1,488	1.2	121,688
1991-92	44,066	41.0	27,547	25.7	15,189	14.1	4,796	4.5	11,712	10.9	617	0.6	569	0.5	1,178	1.1	107,391
1992-93	32,093	42.0	19,053	25.0	10,939	14.3	3,534	4.6	7,928	10.4	401	0.5	426	0.6	949	1.2	76,330
1993-94	30,886	44.3	15,918	22.8	10,267	14.7	3,201	4.6	7,743	11.1	465	0.7	372	0.5	807	1.2	69,768
1994-95	38,056	43.5	19,968	22.8	13,179	15.1	3,782	4.3	10,379	11.9	552	0.6	496	0.6	1,001	1.1	87,428
1995-96	44,327	44.7	22,269	22.5	15,284	15.4	3,842	3.9	11,318	11.4	556	0.6	494	0.5	1,021	1.0	99,139
1996-97	37,212	43.4	18,266	21.3	14,640	17.1	3,336	3.9	10,518	12.3	431	0.5	490	0.6	833	1.0	85,752
1997-98	31,694	41.0	16,233	21.0	15,095	19.5	3,069	4.0	9,741	12.6	369	0.5	435	0.6	657	0.8	77,327
1998-99	35,141	41.8	17,291	20.5	16,028	19.0	3,320	3.9	10,672	12.7	442	0.5	474	0.6	763	0.9	84,143
1999-00	39,311	42.6	19,319	20.9	17,286	18.7	3,105	3.4	11,512	12.5	444	0.5	471	0.5	809	0.9	92,272
2000-01	46,745	43.5	24,159	22.5	19,535	18.2	3,183	3.0	11,565	10.8	564	0.5	472	0.4	1,115	1.0	107,366
2001-02	35,301	39.7	21,374	24.0	15,825	17.8	3,316	3.7	10,954	12.3	589	0.7	459	0.5	1,075	1.2	88,900
2002-03	36,431	38.8	23,109	24.6	16,182	17.2	3,657	3.9	12,279	13.1	811	0.9	483	0.5	957	1.0	93,914
2003-04	40,561	36.3	28,028	25.1	20,284	18.2	4,773	4.3	15,411	13.8	884	0.8	596	0.5	1,050	0.9	111,590
2004-05	44,746	36.3	30,581	24.8	22,660	18.4	6,364	5.2	16,318	13.2	944	0.8	592	0.5	1,217	1.0	123,424
2005-06	44,661	33.9	32,297	24.5	24,862	18.9	9,099	6.9	17,638	13.4	879	0.7	780	0.6	1,372	1.0	131,593

(a) Includes not stated and Other Territories.

AUSTRALIA

TABLE 1.2 SETTLER ARRIVALS BY BIRTHPLACE, 1995-96 TO 2005-06

BIRTHPLACE	1995-96	1996-97	1997-98	1998-99	1999-00	2000-01	2001-02	2002-03	2003-04	2004-05	2005-06
OCEANIA											
<i>Australia & External Territories (a)</i>	551	376	351	276	378	570	444	407	460	573	610
<i>New Zealand</i>	12,265	13,072	14,723	18,677	21,889	25,165	15,663	12,368	14,418	17,345	19,033
<i>Melanesia</i>											
New Caledonia	11	19	5	10	19	8	8	5	4	12	6
Papua New Guinea	217	139	134	126	84	140	124	216	192	182	215
Solomon Islands	26	26	26	36	44	27	32	18	29	43	16
Vanuatu	15	9	14	8	11	19	18	23	14	12	20
<i>Total</i>	269	193	179	180	158	194	182	262	239	249	257
<i>Micronesia</i>											
Guam	1	1	2	1	1	2	-	5	7	3	1
Kiribati	8	10	6	6	6	4	12	6	4	6	3
Marshall Islands	1	-	-	-	1	-	-	-	-	-	2
Micronesia Federated States	1	3	2	-	-	-	1	3	-	2	-
Nauru	6	1	2	3	2	7	13	8	6	9	6
Northern Mariana Islands	-	-	-	1	-	-	-	-	1	-	-
Palau	1	-	1	-	1	-	-	-	-	-	-
Micronesia nfd	1	-	-	-	1	-	-	-	-	-	-
<i>Total</i>	19	15	13	11	12	13	26	22	18	20	12
<i>Polynesia (excluding Hawaii)</i>											
Cook Islands	170	293	228	207	200	236	124	82	108	91	98
Fiji	1,714	1,662	1,070	1,561	1,856	2,150	1,608	1,609	1,603	1,736	1,830
French Polynesia	10	5	4	3	11	6	2	6	3	8	5
Niue	11	10	8	55	48	57	28	21	32	35	25
Samoa	1,022	954	1,024	1,167	1,074	1,295	756	506	665	747	594
Samoa American	-	2	1	10	12	10	12	4	10	11	9
Tokelau	11	7	12	19	19	30	32	15	28	26	31
Tonga	179	166	173	330	371	402	272	211	232	284	269
Tuvalu	3	6	6	4	11	6	3	4	3	6	4
Polynesia (Excludes Hawaii) ne	1	-	-	1	-	-	-	-	-	-	-
<i>Total</i>	3,121	3,105	2,526	3,357	3,602	4,192	2,837	2,458	2,684	2,944	2,865
TOTAL OCEANIA	16,225	16,761	17,792	22,501	26,039	30,134	19,152	15,517	17,819	21,131	22,777
EUROPE											
<i>United Kingdom & Ireland</i>											
U.K.	11,268	9,674	9,193	8,785	9,201	9,037	8,749	12,508	18,272	18,220	23,290
Ireland	813	808	707	680	748	709	504	649	942	896	1,061
<i>Total</i>	12,081	10,482	9,900	9,465	9,949	9,746	9,253	13,157	19,214	19,116	24,351
<i>Western Europe</i>											
Austria	112	112	72	78	127	75	84	96	103	89	81
Belgium	73	78	60	52	59	66	68	91	67	77	68
France	309	315	247	237	219	202	253	313	351	323	300
Germany	935	837	709	738	781	801	697	759	806	844	953
Liechtenstein	-	-	-	-	-	-	2	-	1	-	-
Luxembourg	6	1	3	3	2	1	-	1	1	4	4
Monaco	2	-	-	1	-	-	1	2	-	-	2
Netherlands	408	420	364	344	438	407	427	397	432	471	523
Switzerland	280	291	182	183	208	181	180	216	183	198	232
<i>Total</i>	2,125	2,054	1,637	1,636	1,834	1,733	1,712	1,875	1,944	2,006	2,163

(a) The Australia component consists of persons born in Australia who have settled overseas and returned.

AUSTRALIA

TABLE 1.2 (CONTD) SETTLER ARRIVALS BY BIRTHPLACE, 1995-96 TO 2005-06

BIRTHPLACE	1995-96	1996-97	1997-98	1998-99	1999-00	2000-01	2001-02	2002-03	2003-04	2004-05	2005-06
<i>Northern Europe</i>											
Denmark	146	142	100	80	80	104	114	88	97	103	93
Faeroe Islands	1	-	-	-	-	-	-	1	-	-	-
Finland	65	53	37	45	30	51	42	34	52	54	67
Greenland	-	1	-	-	-	1	-	-	-	-	1
Iceland	6	5	1	3	3	4	2	1	4	3	-
Norway	40	48	28	24	41	30	25	56	55	53	69
Sweden	187	160	116	85	117	110	138	148	201	163	151
<i>Total</i>	<i>445</i>	<i>409</i>	<i>282</i>	<i>237</i>	<i>271</i>	<i>300</i>	<i>321</i>	<i>328</i>	<i>409</i>	<i>376</i>	<i>381</i>
<i>Southern Europe</i>											
Andorra	1	1	-	-	-	-	-	-	-	-	-
Gibraltar	5	5	3	9	3	1	1	2	3	7	4
Italy	304	272	201	197	168	181	267	139	186	195	187
Malta	66	41	39	40	41	40	28	54	58	92	38
Portugal	216	123	43	39	47	35	34	41	44	62	40
Spain	96	79	60	53	40	72	65	92	88	95	91
<i>Total</i>	<i>688</i>	<i>521</i>	<i>346</i>	<i>338</i>	<i>299</i>	<i>329</i>	<i>395</i>	<i>328</i>	<i>379</i>	<i>451</i>	<i>360</i>
<i>South Eastern Europe</i>											
Albania	53	78	78	57	58	64	77	280	124	115	130
Bosnia & Herzegovina (b)	3,405	2,059	2,135	1,389	672	759	403	160	126	108	115
Bulgaria	113	83	64	133	120	143	106	82	108	116	83
Croatia (b)	710	667	1,024	1,097	1,026	1,296	616	321	137	67	89
Cyprus	76	83	78	59	45	62	44	30	63	41	43
Fmr. Yugo. Rep. of Macedonia	516	406	433	411	295	475	389	393	373	310	357
Greece	281	270	204	142	101	92	108	106	99	85	112
Moldava	12	31	6	3	2	-	10	8	31	12	22
Romania	368	370	246	342	306	289	271	300	289	286	300
Serbia & Montenegro (b)	-	-	-	2,912	2,356	2,343	2,082	1,633	931	671	509
Slovenia (b)	23	33	42	21	13	19	4	6	12	6	21
Former Yugoslavia nfd (b)	3,049	2,097	1,550	-	-	-	-	-	-	-	-
<i>Total</i>	<i>8,606</i>	<i>6,177</i>	<i>5,860</i>	<i>6,566</i>	<i>4,994</i>	<i>5,542</i>	<i>4,110</i>	<i>3,319</i>	<i>2,293</i>	<i>1,817</i>	<i>1,781</i>
<i>Eastern Europe</i>											
Belarus (c)	15	23	13	12	16	18	9	13	20	46	47
Czech Republic (d)	48	49	30	11	22	13	22	12	13	22	39
Estonia (c)	6	12	2	3	7	10	21	16	13	14	10
Former Czechoslovakia (d)	35	33	39	104	101	113	134	127	126	113	105
Hungary	121	109	81	59	84	56	79	81	108	119	111
Latvia (c)	20	31	19	13	17	21	18	29	27	30	29
Lithuania (c)	10	18	4	18	23	16	25	18	30	38	22
Poland	617	509	308	290	222	256	232	271	334	354	338
Russian Federation (c)	81	231	180	52	65	88	87	93	222	396	444
Slovakia (d)	28	50	30	7	16	10	12	15	30	18	24
Ukraine	407	514	277	46	78	87	100	107	203	200	202
Eastern Europe nfd	-	-	-	-	-	-	-	-	1	-	-
<i>Total</i>	<i>1,388</i>	<i>1,579</i>	<i>983</i>	<i>615</i>	<i>651</i>	<i>688</i>	<i>739</i>	<i>782</i>	<i>1,127</i>	<i>1,350</i>	<i>1,371</i>
TOTAL EUROPE	25,333	21,222	19,008	18,857	17,998	18,338	16,530	19,789	25,366	25,116	30,407

(b) As reliable data are not available for component countries prior to 1995-96, care should be taken when interpreting the data. Serbia and Montenegro was previously called the Federal Republic of Yugoslavia and since 1998-99 contains the Former Yugoslavia nfd.

(c) As reliable data are not available for component countries prior to 1995-96, care should be taken when interpreting the data.

(d) As reliable data are not available for component countries prior to 1995-96, care should be taken when interpreting the data.

AUSTRALIA

TABLE 1.2 (CONTD) SETTLER ARRIVALS BY BIRTHPLACE, 1995-96 TO 2005-06

BIRTHPLACE	1995-96	1996-97	1997-98	1998-99	1999-00	2000-01	2001-02	2002-03	2003-04	2004-05	2005-06
NORTH AFRICA & THE MIDDLE EAST											
<i>North Africa</i>											
Algeria	27	25	35	32	25	59	34	36	29	28	27
Egypt	504	414	310	358	360	423	354	551	736	857	812
Libya	16	15	15	8	12	18	9	19	24	18	20
Morocco	39	26	24	25	31	18	24	41	39	41	45
Sudan	452	365	430	566	594	1,145	1,078	2,775	4,591	5,654	3,783
Tunisia	5	6	11	11	5	9	6	22	5	4	9
Western Sahara	-	-	-	-	-	-	-	-	-	-	-
North Africa nfd	-	-	-	1	-	-	1	-	-	-	-
<i>Total</i>	1,043	851	825	1,001	1,027	1,672	1,506	3,444	5,424	6,602	4,696
<i>The Middle East</i>											
Bahrain	22	24	20	9	12	13	21	22	14	32	28
Gaza Strip & West Bank	8	6	5	16	24	15	22	4	16	5	5
Iran	1,018	822	693	525	797	907	600	819	843	966	897
Iraq	2,617	1,966	1,793	1,510	1,673	1,629	1,372	2,819	1,903	1,936	2,425
Israel	154	137	142	126	105	114	169	253	318	383	322
Jordan	146	190	112	138	121	180	118	156	189	237	201
Kuwait	95	99	123	106	197	107	58	128	95	92	137
Lebanon	1,326	1,019	1,107	944	1,226	1,498	1,100	1,613	1,293	1,447	1,286
Oman	8	14	11	14	12	13	14	16	11	21	29
Qatar	14	12	12	10	9	18	17	7	13	11	14
Saudi Arabia	94	118	70	42	48	54	51	61	54	87	67
Syria	204	150	171	166	182	214	176	227	211	231	239
Turkey	803	741	635	521	513	423	617	729	707	624	526
United Arab Emirates	53	57	63	49	54	50	121	200	161	219	240
Yemen	1	17	7	12	18	18	13	25	38	9	6
Middle East nfd	-	-	-	5	13	17	25	27	31	59	35
<i>Total</i>	6,563	5,372	4,964	4,193	5,004	5,270	4,494	7,106	5,897	6,359	6,457
TOTAL NORTH AFRICA & THE MIDDLE EAST	7,606	6,223	5,789	5,194	6,031	6,942	6,000	10,550	11,321	12,961	11,153
SOUTHEAST ASIA											
Brunei	29	44	27	39	33	61	40	53	63	56	49
Burma (Myanmar)	448	394	170	142	156	223	248	188	185	417	690
Cambodia	1,357	800	505	322	250	464	480	617	561	630	625
East Timor (e)	-	-	-	-	-	19	18	23	32	30	43
Indonesia (e)	1,793	1,750	1,917	2,491	2,943	3,921	4,221	3,026	2,584	1,930	1,853
Laos	63	43	30	41	17	68	39	41	44	114	66
Malaysia	1,081	1,056	931	1,296	1,771	2,222	1,939	2,686	3,718	2,936	2,967
Philippines	3,232	2,808	2,769	3,318	3,186	3,123	2,837	3,190	4,111	4,239	4,871
Singapore	841	925	694	650	884	1,361	1,493	1,751	2,224	3,036	2,685
Thailand	736	571	346	498	527	697	1,230	1,133	1,065	1,277	1,568
Viet Nam	3,567	2,966	2,311	2,137	1,502	1,639	1,919	2,568	2,212	2,203	2,661
TOTAL SOUTHEAST ASIA	13,147	11,357	9,700	10,934	11,269	13,798	14,464	15,276	16,799	16,868	18,078

(e) East Timor previously recorded under Indonesia, care should be taken when interpreting the data.

AUSTRALIA**TABLE 1.2 (CONTD) SETTLER ARRIVALS BY BIRTHPLACE, 1995-96 TO 2005-06**

BIRTHPLACE	1995-96	1996-97	1997-98	1998-99	1999-00	2000-01	2001-02	2002-03	2003-04	2004-05	2005-06
NORTHEAST ASIA											
China (f)	11,247	7,761	4,338	6,133	6,809	8,762	6,708	6,664	8,784	11,095	10,581
Hong Kong (g)	4,361	3,894	3,194	1,918	1,467	1,541	931	1,029	1,125	1,273	1,031
Japan	593	485	508	578	553	604	571	607	706	749	755
Korea	704	707	596	627	768	1,344	759	903	1,075	1,788	2,117
Macau (g)	124	97	57	56	43	28	29	25	26	31	21
Mongolia	1	1	3	1	2	3	3	11	5	15	15
Taiwan	1,638	2,180	1,518	1,556	1,699	2,599	1,715	1,109	881	776	752
TOTAL NORTHEAST ASIA	18,668	15,125	10,214	10,869	11,341	14,881	10,716	10,348	12,602	15,727	15,272
SOUTHERN ASIA											
Bangladesh	759	481	282	419	784	950	437	437	581	770	848
Bhutan	-	-	8	5	-	2	-	1	-	-	2
India	3,700	2,681	2,786	2,557	4,631	6,336	5,091	5,783	8,135	9,414	11,286
Maldives	-	2	1	5	1	1	8	3	7	10	7
Nepal	60	50	36	33	114	228	166	176	235	302	304
Pakistan	603	623	435	613	892	1,256	831	770	1,099	1,348	1,234
Sri Lanka	1,951	1,415	1,261	917	1,280	2,043	2,011	1,845	1,551	2,312	2,361
TOTAL SOUTHERN ASIA	7,073	5,252	4,809	4,549	7,702	10,816	8,544	9,015	11,608	14,156	16,042
CENTRAL ASIA											
Afghanistan	636	350	524	767	745	474	646	964	1,221	1,531	2,547
Armenia (d)	31	34	27	6	12	3	7	23	15	6	6
Azerbaijan (d)	6	2	4	2	12	2	10	4	9	12	13
Georgia (d)	13	13	6	1	15	10	9	8	5	6	3
Kazakhstan (d)	24	35	31	9	17	25	13	18	41	35	45
Kyrgyz Republic (d)	4	3	8	3	6	2	7	10	25	24	23
Tajikistan (d)	-	1	1	-	1	1	2	2	-	2	5
Turkmenistan (d)	1	-	-	-	-	1	1	3	2	2	6
Uzbekistan (d)	39	22	15	7	8	15	17	11	31	35	82
TOTAL CENTRAL ASIA	754	460	616	795	816	533	712	1,043	1,349	1,653	2,730
NORTHERN AMERICA											
Bermuda	8	9	10	3	5	7	8	8	2	4	5
Canada	866	878	775	581	673	730	586	643	615	679	781
U.S.A.	1,625	1,530	1,264	1,040	1,061	1,212	1,136	1,324	1,359	1,578	1,655
TOTAL NORTHERN AMERICA	2,499	2,417	2,049	1,624	1,739	1,949	1,730	1,975	1,976	2,261	2,441

(d) As reliable data are not available for component countries prior to 1995-96, care should be taken when interpreting the data.

(f) Excluding SARs and Taiwan.

(g) SAR of China.

AUSTRALIA**TABLE 1.2** (CONTD) **SETTLER ARRIVALS BY BIRTHPLACE, 1995-96 TO 2005-06**

BIRTHPLACE	1995-96	1996-97	1997-98	1998-99	1999-00	2000-01	2001-02	2002-03	2003-04	2004-05	2005-06
SOUTH AMERICA, CENTRAL AMERICA & THE CARIBBEAN											
<i>South America</i>											
Argentina	113	101	60	65	59	79	78	167	337	325	233
Bolivia	16	18	6	20	15	20	14	15	18	11	16
Brazil	105	108	56	96	104	110	154	208	194	334	356
Chile	263	161	139	186	135	132	143	187	183	181	166
Colombia	101	97	62	90	85	118	146	209	183	225	220
Ecuador	52	23	9	11	18	31	23	38	49	45	48
Falkland Islands	1	3	2	1	-	-	1	-	2	1	2
French Guiana	-	1	-	1	-	1	-	-	1	-	-
Guyana	8	14	2	3	10	9	-	5	7	-	10
Paraguay	6	5	2	6	4	5	12	4	4	4	16
Peru	199	151	69	96	96	122	111	171	151	195	296
Suriname	2	2	-	1	-	-	-	7	4	1	2
Uruguay	49	29	19	23	12	21	27	54	57	65	64
Venezuela	48	79	59	35	30	40	37	52	58	120	171
South America nfd	1	-	-	-	-	-	2	-	-	-	-
<i>Total</i>	<i>964</i>	<i>792</i>	<i>485</i>	<i>634</i>	<i>568</i>	<i>688</i>	<i>748</i>	<i>1,117</i>	<i>1,248</i>	<i>1,507</i>	<i>1,600</i>
<i>Central America</i>											
Belize	7	-	2	-	1	1	-	1	1	-	-
Costa Rica	11	2	8	1	3	2	7	4	-	4	13
El Salvador	191	142	65	37	24	29	27	22	21	31	29
Guatemala	16	11	2	6	6	10	9	2	8	2	6
Honduras	11	4	1	3	-	-	4	3	3	4	5
Mexico	38	39	34	31	30	30	40	68	51	76	148
Nicaragua	20	9	2	5	2	-	3	2	-	1	6
Panama	2	-	2	4	5	3	2	2	4	6	9
Central America nfd	-	1	1	-	2	1	-	-	1	-	-
<i>Total</i>	<i>296</i>	<i>208</i>	<i>117</i>	<i>87</i>	<i>73</i>	<i>76</i>	<i>92</i>	<i>104</i>	<i>89</i>	<i>124</i>	<i>216</i>
<i>The Caribbean</i>											
Anguilla	-	-	1	-	-	-	-	-	-	-	-
Antigua And Barbuda	-	-	-	-	-	-	-	-	-	-	2
Aruba	-	1	1	-	1	-	-	-	-	-	-
Bahamas	2	2	2	2	2	3	2	3	6	3	1
Barbados	6	6	6	3	1	8	1	4	3	3	6
Cayman Islands	1	1	2	2	-	2	3	-	2	3	1
Cuba	8	9	4	14	8	14	17	16	20	18	26
Dominica	-	1	-	-	-	-	-	-	2	2	-
Dominican Republic	1	-	2	5	2	4	5	3	5	5	5
Grenada	4	-	1	-	2	-	-	1	1	1	3
Guadeloupe	-	-	-	-	-	-	2	2	-	1	-
Haiti	1	-	3	3	1	-	6	1	1	-	3
Jamaica	14	5	24	9	10	22	10	7	13	23	21
Martinique	2	-	-	-	2	-	-	-	-	-	-
Montserrat	3	-	-	-	-	-	-	-	-	-	2
Netherlands Antilles	-	-	-	1	-	1	5	1	-	1	4
Puerto Rico	1	1	-	2	1	1	2	2	1	1	1

AUSTRALIA

TABLE 1.2 (CONTD) SETTLER ARRIVALS BY BIRTHPLACE, 1995-96 TO 2005-06

BIRTHPLACE	1995-96	1996-97	1997-98	1998-99	1999-00	2000-01	2001-02	2002-03	2003-04	2004-05	2005-06
<i>The Caribbean (continued)</i>											
St Kitts And Nevis	-	-	-	-	-	-	-	1	-	-	-
St Lucia	1	-	1	1	-	-	-	-	-	2	3
St Vincent And The Grenadines	-	2	-	-	1	-	-	-	-	-	1
Trinidad And Tobago	19	10	18	10	8	14	7	5	26	24	14
Turks And Caicos Islands	-	-	-	-	-	-	-	-	-	-	1
Virgin Islands British	-	-	-	-	-	-	-	-	-	1	-
Virgin Islands United States	-	-	-	-	-	-	-	-	1	-	1
Caribbean nfd	1	2	-	-	-	-	-	-	-	1	-
<i>Total</i>	<i>64</i>	<i>40</i>	<i>65</i>	<i>52</i>	<i>39</i>	<i>69</i>	<i>60</i>	<i>46</i>	<i>81</i>	<i>89</i>	<i>95</i>
TOTAL SOUTH AMERICA, CENTRAL AMERICA & THE CARIBBEAN	1,324	1,040	667	773	680	833	900	1,267	1,418	1,720	1,911
SUB-SAHARAN AFRICA											
<i>Central & West Africa</i>											
Benin	-	3	1	-	-	-	-	-	-	2	1
Burkina Faso	-	1	-	-	-	-	3	1	1	-	-
Cameroon	-	1	1	1	2	-	4	9	4	4	5
Cape Verde	-	-	1	-	-	-	-	-	-	-	1
Central African Republic	-	1	-	-	-	-	-	-	-	1	-
Chad	1	-	-	-	-	-	-	-	-	1	2
Congo	-	1	-	3	3	20	8	23	137	276	91
Congo Democratic Republic	15	12	4	7	3	4	8	8	26	21	155
Cote D'Ivoire	-	-	3	2	1	2	-	5	2	111	55
Gabon	-	-	-	-	-	1	1	-	-	2	1
Gambia	1	4	2	4	-	-	1	3	-	2	4
Ghana	101	118	87	137	94	84	76	95	137	143	217
Guinea	-	-	1	1	1	4	8	25	16	152	101
Guinea-Bissau	-	-	-	-	-	-	3	1	-	-	1
Liberia	-	1	4	2	-	18	113	145	114	851	564
Mali	-	-	-	-	1	-	-	1	1	1	1
Mauritania	2	2	-	1	-	-	-	-	-	1	3
Niger	11	11	15	1	7	7	6	1	1	2	9
Nigeria	48	37	43	82	56	86	126	89	102	111	160
Senegal	8	7	8	2	6	2	11	6	4	7	12
Sierra Leone	5	5	5	6	61	127	328	174	132	642	532
Togo	1	1	-	-	-	3	1	1	2	8	3
<i>Total</i>	<i>193</i>	<i>205</i>	<i>175</i>	<i>249</i>	<i>235</i>	<i>358</i>	<i>697</i>	<i>587</i>	<i>679</i>	<i>2,338</i>	<i>1,918</i>
<i>Southern & East Africa</i>											
Angola	2	7	1	3	5	2	10	3	1	3	3
Botswana	161	64	70	12	10	19	16	26	27	29	24
Burundi	-	1	-	1	1	5	5	8	51	259	442
Comoros	-	2	-	-	-	3	-	1	-	-	-
Djibouti	2	3	1	9	5	7	6	6	2	9	1
Eritrea (h)	185	131	67	187	142	137	133	109	148	125	168
Ethiopia (h)	441	312	280	371	357	397	396	570	718	586	429
Kenya	194	164	165	297	231	256	413	574	617	806	648
Lesotho	1	2	-	-	-	2	7	3	1	8	2
Madagascar	2	1	-	7	4	4	5	8	3	1	4
Malawi	5	5	3	15	9	14	32	19	32	40	17

(h) As reliable data are not available for component countries prior to 1995-96, care should be taken when interpreting the data.

AUSTRALIA**TABLE 1.2 (CONTD) SETTLER ARRIVALS BY BIRTHPLACE, 1995-96 TO 2005-06**

BIRTHPLACE	1995-96	1996-97	1997-98	1998-99	1999-00	2000-01	2001-02	2002-03	2003-04	2004-05	2005-06
<i>Southern & East Africa (continued)</i>											
Mauritius	111	98	84	64	118	138	153	170	238	227	260
Mozambique	6	6	17	10	7	14	18	21	20	15	8
Namibia	16	5	17	27	27	37	39	48	23	53	39
Reunion	1	1	-	5	5	-	2	-	2	1	3
Rwanda	5	2	-	1	2	1	3	14	44	47	68
St Helena	-	-	-	-	-	-	-	1	-	1	1
Seychelles	22	14	6	17	19	1	32	20	36	25	27
Somalia	521	433	688	507	284	319	359	203	221	246	264
South Africa	3,190	3,211	4,281	5,024	5,691	5,754	5,714	4,603	5,849	4,594	3,953
Swaziland	3	2	7	12	8	8	6	6	11	3	10
Tanzania	33	23	27	20	16	13	26	24	55	176	405
Uganda	29	23	14	15	17	22	48	71	98	185	161
Zambia	62	71	79	72	90	84	123	77	129	98	93
Zimbabwe	261	230	273	322	573	720	1,068	1,197	1,620	1,258	1,104
Southern & East Africa nfd	-	-	2	-	1	1	-	1	1	-	-
<i>Total</i>	<i>5,253</i>	<i>4,811</i>	<i>6,082</i>	<i>6,998</i>	<i>7,622</i>	<i>7,958</i>	<i>8,614</i>	<i>7,783</i>	<i>9,947</i>	<i>8,795</i>	<i>8,134</i>
TOTAL											
SUB-SAHARAN AFRICA	5,446	5,016	6,257	7,247	7,857	8,316	9,311	8,370	10,626	11,133	10,052
SUPPLEMENTARY CODES (i)											
Europe & USSR nfd	-	-	-	1	-	-	-	-	-	-	-
Fmr Ussr & Baltic States nfd	1,012	835	401	723	727	788	815	740	660	687	699
TOTAL											
SUPPLEMENTARY CODES	1,012	835	401	724	727	788	815	740	660	687	699
NOT STATED	52	44	25	76	73	38	26	24	46	11	31
TOTAL ALL COUNTRIES	99,139	85,752	77,327	84,143	92,272	107,366	88,900	93,914	111,590	123,424	131,593

(i) Supplementary codes which cannot be classified to any major region in the Standard Australian Classification of Countries (SACC). This may lead to under reporting of their component countries in the rest of the table, care should be taken when interpreting the data.

AUSTRALIA

TABLE 1.3 **SETTLER ARRIVALS BY STATE OR TERRITORY OF INTENDED RESIDENCE AND SEX, 1994-95 TO 2005-06**

FINANCIAL YEAR	State or Territory of Intended Residence (a)								
	New South Wales	Victoria	Queensland	South Australia	Western Australia	Tasmania	Northern Territory	Australian Capital Territory	Australia (b)
MALES									
1994-95	17,754	9,340	6,134	1,747	4,884	269	200	456	40,789
1995-96	19,566	10,051	7,108	1,800	5,413	266	190	425	44,831
1996-97	17,565	8,570	6,973	1,641	5,253	205	234	426	40,877
1997-98	15,145	7,623	7,380	1,498	4,922	181	208	305	37,278
1998-99	16,961	8,113	7,800	1,598	5,310	228	220	339	40,573
1999-00	19,309	9,431	8,502	1,504	5,734	214	225	394	45,322
2000-01	23,351	11,953	9,743	1,599	5,699	275	217	536	53,386
2001-02	16,994	10,506	7,553	1,630	5,323	286	183	515	42,993
2002-03	17,388	10,873	7,707	1,759	5,998	395	206	421	44,750
2003-04	19,521	13,527	9,741	2,362	7,463	405	259	509	53,787
2004-05	21,315	14,770	10,940	3,188	7,989	454	277	561	59,495
2005-06	21,242	15,334	11,890	4,443	8,570	425	338	607	62,852
FEMALES									
1994-95	20,302	10,628	7,045	2,035	5,495	283	296	545	46,639
1995-96	24,761	12,218	8,176	2,042	5,905	290	304	596	54,308
1996-97	19,647	9,696	7,667	1,695	5,265	226	256	407	44,875
1997-98	16,549	8,610	7,715	1,571	4,819	188	227	352	40,049
1998-99	18,180	9,178	8,228	1,722	5,362	214	254	424	43,570
1999-00	20,002	9,888	8,784	1,601	5,778	230	246	415	46,950
2000-01	23,394	12,206	9,792	1,584	5,866	289	255	579	53,980
2001-02	18,307	10,868	8,272	1,686	5,631	303	276	560	45,907
2002-03	19,043	12,236	8,475	1,898	6,281	416	277	536	49,164
2003-04	21,040	14,501	10,543	2,411	7,948	479	337	541	57,803
2004-05	23,431	15,811	11,720	3,176	8,329	490	315	656	63,929
2005-06	23,419	16,963	12,972	4,656	9,068	454	442	765	68,741
PERSONS									
1994-95	38,056	19,968	13,179	3,782	10,379	552	496	1,001	87,428
1995-96	44,327	22,269	15,284	3,842	11,318	556	494	1,021	99,139
1996-97	37,212	18,266	14,640	3,336	10,518	431	490	833	85,752
1997-98	31,694	16,233	15,095	3,069	9,741	369	435	657	77,327
1998-99	35,141	17,291	16,028	3,320	10,672	442	474	763	84,143
1999-00	39,311	19,319	17,286	3,105	11,512	444	471	809	92,272
2000-01	46,745	24,159	19,535	3,183	11,565	564	472	1,115	107,366
2001-02	35,301	21,374	15,825	3,316	10,954	589	459	1,075	88,900
2002-03	36,431	23,109	16,182	3,657	12,279	811	483	957	93,914
2003-04	40,561	28,028	20,284	4,773	15,411	884	596	1,050	111,590
2004-05	44,746	30,581	22,660	6,364	16,318	944	592	1,217	123,424
2005-06	44,661	32,297	24,862	9,099	17,638	879	780	1,372	131,593

(a) Based on stated intention at time of arrival only. There can be no guarantee that the settler actually settled in this State/Territory.

(b) Includes Not Stated. From 1994-95 also includes Other Territories which comprise Christmas Island, Cocos (Keeling) Islands and Jervis Bay. Previously published as Table 2.2 in Consolidated Statistics (ceased publication 2000).

AUSTRALIA**TABLE 1.4 PERMANENT MOVEMENTS BY AGE, 1994-95 TO 2005-06**

FINANCIAL YEAR	Age Group (Years)														
	0-9		10-19		20-29		30-39		40-49		50-59		60+		Total
	0-9	10-19	0-19 Total		20-29		30-39		40-49		20-59 Total		60+		
SETTLER ARRIVALS															
1994-95	15,805	10,927	26,732	22,935	21,303	8,106	3,832	56,176	4,520	87,428					
1995-96	17,363	13,525	30,888	23,202	22,742	10,172	5,526	61,642	6,609	99,139					
1996-97	14,891	12,200	27,091	19,419	19,583	9,473	4,743	53,218	5,443	85,752					
1997-98	14,589	11,462	26,051	17,605	19,075	8,314	3,314	48,308	2,968	77,327					
1998-99	14,673	11,775	26,448	20,338	21,077	9,160	3,718	54,293	3,402	84,143					
1999-00	16,164	13,188	29,352	22,083	23,483	10,814	3,597	59,977	2,943	92,272					
2000-01	18,733	15,221	33,954	26,259	26,582	13,083	4,408	70,332	3,080	107,366					
2001-02	14,680	13,012	27,692	23,124	21,833	10,580	3,463	59,000	2,208	88,900					
2002-03	15,826	13,839	29,665	24,225	23,531	11,207	3,339	62,302	1,947	93,914					
2003-04	20,005	15,736	35,741	25,939	29,177	13,553	4,046	72,715	3,134	111,590					
2004-05	22,417	17,033	39,450	28,730	31,481	14,206	5,089	79,506	4,468	123,424					
2005-06	24,257	18,066	42,323	30,760	33,976	15,736	4,998	85,470	3,800	131,593					
AUSTRALIAN^(a) BORN DEPARTURES															
1994-95	3,006	898	3,904	2,370	2,172	1,096	370	6,008	182	10,094					
1995-96	3,215	977	4,192	2,509	2,499	1,194	430	6,632	189	11,013					
1996-97	3,231	980	4,211	2,833	2,728	1,270	476	7,307	186	11,704					
1997-98	3,505	1,056	4,561	3,081	2,991	1,440	532	8,044	184	12,789					
1998-99	3,230	1,195	4,425	4,124	4,810	2,340	1,193	12,467	372	17,264					
1999-00	3,673	1,435	5,108	4,661	5,671	2,908	1,426	14,666	491	20,265					
2000-01	3,992	1,612	5,604	5,259	6,774	3,367	1,658	17,058	455	23,117					
2001-02	4,028	1,633	5,661	5,141	7,403	3,651	1,772	17,967	542	24,170					
2002-03	4,183	1,767	5,950	5,047	8,104	4,003	1,953	19,107	555	25,612					
2003-04	4,875	2,128	7,003	5,470	9,002	4,569	2,342	21,383	754	29,140					
2004-05	5,140	2,100	7,240	5,970	9,789	4,703	2,577	23,039	748	31,027					
2005-06	5,327	2,370	7,697	6,680	10,897	5,273	2,873	25,723	864	34,284					
OVERSEAS BORN DEPARTURES															
1994-95	1,394	1,536	2,930	3,558	4,738	2,681	1,303	12,280	1,644	16,854					
1995-96	1,444	1,614	3,058	3,615	5,060	2,884	1,353	12,912	1,687	17,657					
1996-97	1,530	1,664	3,194	3,492	4,987	3,067	1,502	13,048	1,911	18,153					
1997-98	1,590	1,707	3,297	3,571	5,355	3,294	1,716	13,936	1,963	19,196					
1998-99	1,718	1,407	3,125	3,002	4,708	3,471	1,916	13,097	1,695	17,917					
1999-00	1,943	1,715	3,658	3,247	5,450	4,193	2,321	15,211	1,944	20,813					
2000-01	2,080	1,862	3,942	3,875	6,048	4,877	2,681	17,481	1,981	23,404					
2001-02	2,191	1,844	4,035	4,106	6,263	5,000	2,674	18,043	1,993	24,071					
2002-03	2,348	1,927	4,275	4,190	6,181	5,122	2,975	18,468	2,108	24,851					
2003-04	2,586	2,248	4,834	4,764	7,348	6,548	3,818	22,478	2,626	29,938					
2004-05	2,740	2,319	5,059	5,124	7,764	6,862	4,054	23,804	2,716	31,579					
2005-06	3,033	2,549	5,582	5,410	7,965	7,320	4,387	25,082	2,905	33,569					

(a) Includes Australian External Territories.

Previously published as Table 2.5 in Consolidated Statistics (ceased publication 2000).

AUSTRALIA

TABLE 1.5 **SETTLER ARRIVALS BY ELIGIBILITY CATEGORY^(a), 1995-96 TO 2005-06**

ELIGIBILITY CATEGORY	Financial Year										
	1995-96	1996-97	1997-98	1998-99	1999-00	2000-01	2001-02	2002-03	2003-04	2004-05	2005-06
<i>FAMILY</i>											
- Preferential											
Spouses	21,339	15,303	13,141	13,563	13,124	13,148	15,977	19,196	18,337	19,350	21,231
Fiancées	5,393	3,251	2,915	2,952	3,073	3,379	3,841	5,118	5,122	5,675	6,168
Parents	7,268	6,247	1,812	2,201	1,177	1,068	545	375	2,520	4,865	3,848
Dependent Child	2,033	1,618	1,520	1,252	1,122	1,138	1,199	1,305	1,422	1,312	1,442
Child for Adoption	289	285	272	296	310	304	332	379	459	410	441
Other	2,033	1,522	1,482	1,237	1,090	1,108	1,450	1,693	1,688	1,570	1,641
- Concessional (b)	8,103	8,264
TOTAL	46,458	36,490	21,142	21,501	19,896	20,145	23,344	28,066	29,548	33,182	34,771
<i>SKILL</i>											
- Australian Sponsored (b)	7,355	8,409	8,882	6,743	4,586	4,505	6,285	6,907	7,695
- Regional Designated Area Sponsored (b)	120	57	139	830	1,374	2,392	6,954	6,441	7,799
- Employer Nomination Scheme	2,513	2,270	2,172	1,628	1,212	1,307	1,817	1,748	2,044	2,481	3,092
- Business Skills	4,270	5,609	5,086	5,433	5,631	5,600	6,409	5,421	5,072	4,813	4,237
- Distinguished Talents	94	81	104	87	67	80	72	63	90	91	51
- Independent	13,131	11,737	11,148	12,317	16,419	21,155	21,778	24,375	31,083	31,905	33,607
- Skilled Independent Regional (c)	495	3,026
TOTAL	20,008	19,697	25,985	27,931	32,350	35,715	36,036	38,504	51,528	53,133	59,507
<i>SPECIAL ELIGIBILITY</i>	511	393	217	175	131	127	176	178	207	162	104
<i>HUMANITARIAN</i>											
- Refugees	4,060	3,372	3,553	3,269	3,429	4,142	3,525	3,882	3,130	5,278	5,190
- Humanitarian	3,617	2,120	3,033	4,614	3,022	2,706	3,003	5,686	7,205	7,957	6,923
- Special Assistance	6,147	4,394	2,193	907	816	792	204	1	-	-	-
TOTAL	13,824	9,886	8,779	8,790	7,267	7,640	6,732	9,569	10,335	13,235	12,113
<i>NON-PROGRAM MIGRATION</i>											
- New Zealand Citizens	16,234	17,501	19,393	24,680	31,610	42,257	21,458	16,364	18,717	22,379	23,781
- Other	2,104	1,785	1,811	1,066	1,018	1,482	1,154	1,233	1,254	1,333	1,317
TOTAL	18,338	19,286	21,204	25,746	32,628	43,739	22,612	17,597	19,971	23,712	25,098
TOTAL	99,139	85,752	77,327	84,143	92,272	107,366	88,900	93,914	111,589	123,424	131,593

(a) Migration eligibility categories have changed during the period. The allocation of settlers to categories is based on assumptions, to align as closely as possible past policies with current policy. Comparisons between years are therefore indicative only.

(b) Data based on visa subclass at time of arrival.

(c) Implemented 1 July 2004.

Previously published as Table 2.7 in Consolidated Statistics (ceased publication 2000).

AUSTRALIA**TABLE 1.6** **SETTLER ARRIVALS BY ELIGIBILITY CATEGORY^(a) AND STATE OR TERRITORY OF INTENDED RESIDENCE, 1994-95 TO 2005-06**

FINANCIAL YEAR	State or Territory of Intended Residence (b)								
	New South Wales	Victoria	Queensland	South Australia	Western Australia	Tasmania	Northern Territory	Australian Capital Territory	Australia (c)
FAMILY									
1994-95	16,977	9,260	4,176	1,615	4,054	203	307	478	37,078
1995-96	22,716	11,838	4,604	1,744	4,494	206	255	585	46,458
1996-97	17,358	9,133	3,737	1,508	3,951	193	231	363	36,490
1997-98	9,870	5,575	2,411	919	1,861	113	155	225	21,142
1998-99	10,480	5,439	2,370	845	1,862	100	161	238	21,501
1999-00	9,425	4,937	2,321	825	1,864	150	137	232	19,896
2000-01	9,358	5,071	2,418	830	1,928	146	137	248	20,145
2001-02	10,297	6,165	3,022	994	2,192	155	205	307	23,344
2002-03	12,306	7,756	3,453	1,243	2,525	194	214	370	28,066
2003-04	12,766	7,981	3,893	1,240	2,839	220	228	378	29,548
2004-05	14,658	8,926	4,185	1,339	3,235	210	224	403	33,182
2005-06	15,220	9,203	4,511	1,502	3,372	257	229	473	34,771
SKILL									
1994-95	9,472	3,617	2,783	954	2,997	82	59	243	20,210
1995-96	8,960	3,199	3,213	845	3,458	70	85	168	20,008
1996-97	8,805	3,057	3,155	765	3,524	52	111	227	19,697
1997-98	11,287	4,537	3,578	1,157	4,966	66	149	230	25,985
1998-99	12,194	4,898	3,643	1,247	5,454	96	155	242	27,931
1999-00	13,796	6,333	3,925	1,243	6,506	107	156	281	32,350
2000-01	15,390	7,996	4,426	967	6,250	98	140	446	35,715
2001-02	14,267	8,582	4,803	1,257	6,431	141	110	445	36,036
2002-03	14,687	9,163	5,204	1,332	7,477	177	122	342	38,504
2003-04	18,040	13,161	7,421	2,278	9,850	189	159	430	51,528
2004-05	18,951	13,496	7,243	3,320	9,166	313	154	490	53,133
2005-06	18,644	15,167	8,101	5,987	10,452	317	274	565	59,507
SPECIAL ELIGIBILITY									
1994-95	145	91	75	28	80	7	2	6	434
1995-96	181	115	113	29	70	2	-	1	511
1996-97	160	66	73	15	69	1	1	8	393
1997-98	70	47	46	23	28	-	-	3	217
1998-99	61	40	37	8	25	3	-	1	175
1999-00	46	31	11	18	23	-	2	-	131
2000-01	27	45	9	15	26	5	-	-	127
2001-02	30	41	38	14	50	1	2	-	176
2002-03	55	45	26	21	29	2	-	-	178
2003-04	62	44	40	11	48	2	-	-	207
2004-05	51	31	28	19	31	-	1	1	162
2005-06	35	23	15	10	19	2	-	-	104

(a) Migration eligibility categories have changed during the period. The allocation of settlers to categories is based on assumptions, to align as closely as possible past policies with current policy. Comparisons between years are therefore indicative only.

(b) Based on stated intention at time of arrival only. There can be no guarantee that the settler actually settled in this state.

(c) Includes Not Stated. From 1994-95 also includes Other Territories which comprise Christmas Island, Cocos (Keeling) Islands and Jervis Bay. Previously published as Table 2.8 in Consolidated Statistics (ceased production 2000).

AUSTRALIA

TABLE 1.6 (CONTD) SETTLER ARRIVALS BY ELIGIBILITY CATEGORY^(a) AND STATE OR TERRITORY OF INTENDED RESIDENCE, 1994-95 TO 2005-06

FINANCIAL YEAR	State or Territory of Intended Residence (b)								
	New South Wales	Victoria	Queensland	South Australia	Western Australia	Tasmania	Northern Territory	Australian Capital Territory	Australia (c)
HUMANITARIAN									
1994-95	5,748	4,528	949	732	1,392	93	57	132	13,632
1995-96	5,843	4,359	902	815	1,647	94	45	119	13,824
1996-97	4,361	3,057	605	605	984	82	59	126	9,886
1997-98	3,720	2,781	718	527	831	108	48	46	8,779
1998-99	3,347	2,844	724	733	910	122	42	67	8,790
1999-00	3,097	2,122	550	494	854	37	46	66	7,267
2000-01	2,797	2,157	677	642	1,048	142	73	100	7,640
2001-02	2,519	1,907	626	558	749	197	57	119	6,732
2002-03	3,583	2,829	950	686	1,033	302	92	94	9,569
2003-04	3,507	3,189	990	844	1,243	351	107	104	10,335
2004-05	4,240	3,936	1,506	1,196	1,749	300	137	171	13,235
2005-06	4,269	3,433	1,432	1,072	1,367	200	152	188	12,113
NON-PROGRAM MIGRATION (d)									
1994-95	5,714	2,472	5,196	453	1,856	167	71	142	16,074
1995-96	6,627	2,758	6,452	409	1,649	184	109	148	18,338
1996-97	6,528	2,953	7,070	443	1,990	103	88	109	19,286
1997-98	6,747	3,293	8,342	443	2,055	82	83	153	21,204
1998-99	9,059	4,070	9,254	487	2,421	121	116	215	25,746
1999-00	12,947	5,896	10,479	525	2,265	150	130	230	32,628
2000-01	19,173	8,890	12,005	729	2,313	173	122	321	43,739
2001-02	8,188	4,679	7,336	493	1,532	95	85	204	22,612
2002-03	5,800	3,316	6,549	375	1,215	136	55	151	17,597
2003-04	6,186	3,653	7,940	400	1,431	122	102	138	19,972
2004-05	6,846	4,192	9,698	490	2,137	121	76	152	23,712
2005-06	6,493	4,471	10,803	528	2,428	103	125	146	25,098
TOTAL									
1994-95	38,056	19,968	13,179	3,782	10,379	552	496	1,001	87,428
1995-96	44,327	22,269	15,284	3,842	11,318	556	494	1,021	99,139
1996-97	37,212	18,266	14,640	3,336	10,518	431	490	833	85,752
1997-98	31,694	16,233	15,095	3,069	9,741	369	435	657	77,327
1998-99	35,141	17,291	16,028	3,320	10,672	442	474	763	84,143
1999-00	39,311	19,319	17,286	3,105	11,512	444	471	809	92,272
2000-01	46,745	24,159	19,535	3,183	11,565	564	472	1,115	107,366
2001-02	35,301	21,374	15,825	3,316	10,954	589	459	1,075	88,900
2002-03	36,431	23,109	16,182	3,657	12,279	811	483	957	93,914
2003-04	40,561	28,028	20,284	4,773	15,411	884	596	1,050	111,590
2004-05	44,746	30,581	22,660	6,364	16,318	944	592	1,217	123,424
2005-06	44,661	32,297	24,862	9,099	17,638	879	780	1,372	131,593

(a) Migration eligibility categories have changed during the period. The allocation of settlers to categories is based on assumptions, to align as closely as possible past policies with current policy. Comparisons between years are therefore indicative only.

(b) Based on stated intention at time of arrival only. There can be no guarantee that the settler actually settled in this state.

(c) Includes Not Stated. From 1994-95 also includes Other Territories which comprise Christmas Island, Cocos (Keeling) Islands and Jervis Bay.

(d) Includes New Zealand citizens and children born to Australian citizens overseas.

Previously published as Table 2.8 in Consolidated Statistics (ceased publication 2000).

NEW SOUTH WALES

Table 2.1 SETTLER ARRIVALS BY BIRTHPLACE, 1995-96 TO 2005-06

BIRTHPLACE	1995-96	1996-97	1997-98	1998-99	1999-00	2000-01	2001-02	2002-03	2003-04	2004-05	2005-06
OCEANIA											
<i>Australia & External Territories (a)</i>	239	146	152	108	171	247	211	166	162	230	254
<i>New Zealand</i>	4,113	4,052	4,220	5,944	7,682	9,419	5,103	3,810	4,088	4,567	4,482
<i>Melanesia</i>											
New Caledonia	5	9	2	9	4	2	1	2	-	4	3
Papua New Guinea	25	19	20	22	18	25	18	26	31	20	43
Solomon Islands	3	5	5	13	11	3	8	9	2	6	6
Vanuatu	4	2	8	-	2	15	8	5	1	7	8
<i>Total</i>	37	35	35	44	35	45	35	42	34	37	60
<i>Micronesia</i>											
Guam	-	-	-	1	-	2	-	2	-	1	-
Kiribati	4	1	-	1	5	-	-	-	-	-	-
Marshall Islands	1	-	-	-	1	-	-	-	-	-	2
Nauru	-	-	-	-	-	1	1	1	2	1	-
Palau	1	-	-	-	-	-	-	-	-	-	-
<i>Total</i>	6	1	-	2	6	3	1	3	2	2	2
<i>Polynesia (excluding Hawaii)</i>											
Cook Islands	98	130	97	116	98	104	59	24	40	29	35
Fiji	1,101	1,039	601	1,009	1,221	1,374	1,014	1,022	901	1,058	1,046
French Polynesia	6	1	-	-	5	1	1	3	2	2	2
Niue	4	6	4	21	19	28	15	11	11	17	9
Samoa	565	463	481	583	531	684	405	238	283	310	264
Samoa American	-	1	1	2	3	8	2	1	1	6	3
Tokelau	7	4	7	13	14	15	26	6	18	16	23
Tonga	131	120	102	218	221	255	180	131	138	163	161
Tuvalu	-	-	1	-	3	1	-	-	1	2	-
Polynesia (Excludes Hawaii) ne	1	-	-	-	-	-	-	-	-	-	-
<i>Total</i>	1,913	1,764	1,294	1,962	2,115	2,470	1,702	1,436	1,395	1,603	1,543
TOTAL OCEANIA	6,308	5,998	5,701	8,060	10,009	12,184	7,052	5,457	5,681	6,439	6,341
EUROPE											
<i>United Kingdom & Ireland</i>											
U.K.	3,521	2,871	2,765	2,611	2,747	2,578	2,577	3,443	4,519	3,923	4,561
Ireland	429	393	355	377	409	357	235	320	384	398	386
<i>Total</i>	3,950	3,264	3,120	2,988	3,156	2,935	2,812	3,763	4,903	4,321	4,947
<i>Western Europe</i>											
Austria	51	52	30	29	44	20	15	36	41	18	24
Belgium	25	37	31	18	22	23	24	36	29	24	18
France	128	148	116	110	118	96	99	131	156	120	119
Germany	335	314	263	259	284	274	250	263	312	255	247
Liechtenstein	-	-	-	-	-	-	-	-	1	-	-
Luxembourg	4	1	-	-	-	-	-	1	1	1	-
Monaco	-	-	-	1	-	-	-	2	-	-	1
Netherlands	110	138	108	82	118	146	143	125	130	122	130
Switzerland	113	102	69	66	69	68	48	76	71	58	68
<i>Total</i>	766	792	617	565	655	627	579	670	741	598	607

(a) The Australia component consists of persons born in Australia who have settled overseas and returned.

NEW SOUTH WALES

TABLE 2.1 (CONTD) SETTLER ARRIVALS BY BIRTHPLACE, 1995-96 TO 2005-06

BIRTHPLACE	1995-96	1996-97	1997-98	1998-99	1999-00	2000-01	2001-02	2002-03	2003-04	2004-05	2005-06
<i>Northern Europe</i>											
Denmark	59	55	36	28	24	40	31	32	31	29	34
Faeroe Islands	1	-	-	-	-	-	-	-	-	-	-
Finland	22	24	17	19	13	18	19	14	16	22	23
Greenland	-	1	-	-	-	-	-	-	-	-	-
Iceland	1	3	-	1	2	-	1	-	-	-	-
Norway	8	24	14	11	15	12	10	14	20	16	24
Sweden	70	63	47	29	37	48	53	44	86	54	56
<i>Total</i>	161	170	114	88	91	118	114	104	153	121	137
<i>Southern Europe</i>											
Gibraltar	-	-	2	2	-	-	-	1	2	3	1
Italy	105	110	79	75	51	65	73	51	56	55	51
Malta	29	14	20	15	25	18	13	6	15	24	8
Portugal	100	75	23	25	27	8	16	16	16	10	10
Spain	33	42	28	25	18	33	32	29	40	31	33
<i>Total</i>	267	241	152	142	121	124	134	103	129	123	103
<i>South Eastern Europe</i>											
Albania	15	10	5	10	16	10	16	17	18	11	16
Bosnia & Herzegovina (b)	1,019	700	669	410	192	199	117	47	40	35	39
Bulgaria	60	32	29	87	60	54	45	28	23	39	24
Croatia (b)	294	321	387	455	474	581	306	119	48	19	32
Cyprus	32	32	30	32	26	29	15	8	17	14	13
Fmr. Yugo. Rep. of Macedonia	204	167	173	170	120	185	166	173	143	121	140
Greece	102	95	84	55	39	43	38	48	42	30	42
Moldava	4	11	5	1	-	-	6	3	5	7	8
Romania	91	94	71	100	89	96	75	77	76	85	60
Serbia & Montenegro (b)	-	-	-	845	672	669	682	525	365	233	170
Slovenia	8	16	15	7	1	8	-	3	5	1	8
Former Yugoslavia nfd (b)	1,315	884	596	-	-	-	-	-	-	-	-
<i>Total</i>	3,144	2,362	2,064	2,172	1,689	1,874	1,466	1,048	782	595	552
<i>Eastern Europe</i>											
Belarus (c)	8	6	6	5	2	9	5	8	7	27	28
Czech Republic (d)	15	11	11	3	10	5	8	7	7	10	10
Estonia (c)	1	3	-	2	2	5	16	8	6	3	4
Former Czechoslovakia (d)	15	12	14	46	46	48	68	60	61	48	48
Hungary	47	41	30	26	47	27	31	29	40	49	41
Latvia (c)	13	6	8	6	4	6	1	20	11	13	11
Lituania (c)	4	3	1	7	8	9	14	9	15	21	8
Poland	184	167	101	109	69	97	71	95	112	119	107
Russian Federation (c)	48	99	68	25	31	41	36	52	100	166	200
Slovakia (d)	14	26	11	3	8	8	6	12	16	9	10
Ukraine	181	225	66	15	27	26	31	45	78	94	77
<i>Total</i>	530	599	316	247	254	281	287	345	453	559	544
TOTAL EUROPE	8,818	7,428	6,383	6,202	5,966	5,959	5,392	6,033	7,161	6,317	6,890

(b) As reliable data are not available for component countries prior to 1995-96, care should be taken when interpreting the data. Serbia and Montenegro was previously called the Federal Republic of Yugoslavia and since 1998-99 contains the Former Yugoslavia nfd.

(c) As reliable data are not available for component countries prior to 1995-96, care should be taken when interpreting the data.

(d) As reliable data are not available for component countries prior to 1995-96, care should be taken when interpreting the data.

NEW SOUTH WALES

TABLE 2.1 (CONTD) SETTLER ARRIVALS BY BIRTHPLACE, 1995-96 TO 2005-06

BIRTHPLACE	1995-96	1996-97	1997-98	1998-99	1999-00	2000-01	2001-02	2002-03	2003-04	2004-05	2005-06
NORTH AFRICA & THE MIDDLE EAST											
<i>North Africa</i>											
Algeria	13	8	16	20	15	18	18	19	16	20	14
Egypt	346	252	182	204	197	222	180	227	287	369	356
Libya	7	6	6	3	10	8	5	7	14	9	6
Morocco	18	16	9	16	13	11	15	15	15	19	28
Sudan	302	243	249	265	283	357	277	771	1,318	1,424	1,017
Tunisia	3	1	8	5	2	2	5	14	4	3	2
<i>Total</i>	<i>689</i>	<i>526</i>	<i>470</i>	<i>513</i>	<i>520</i>	<i>618</i>	<i>500</i>	<i>1,053</i>	<i>1,654</i>	<i>1,844</i>	<i>1,423</i>
<i>The Middle East</i>											
Bahrain	10	12	9	6	8	2	10	4	7	17	11
Gaza Strip & West Bank	6	2	4	10	18	9	16	3	14	2	3
Iran	527	399	391	285	443	435	371	411	370	461	445
Iraq	1,571	1,144	1,149	915	941	1,012	739	1,449	1,113	1,176	1,550
Israel	86	62	61	51	44	50	57	115	111	167	121
Jordan	93	133	68	91	68	122	73	114	124	166	131
Kuwait	45	60	80	79	104	57	38	42	38	29	82
Lebanon	985	745	788	701	931	1,086	802	1,136	935	1,017	871
Oman	2	3	4	10	3	5	1	4	3	13	10
Qatar	9	4	10	6	4	11	5	3	8	8	10
Saudi Arabia	48	53	35	20	25	25	24	29	15	41	23
Syria	135	93	111	106	120	119	104	131	126	152	158
Turkey	350	327	279	237	224	183	226	296	275	230	224
United Arab Emirates	23	15	27	12	29	23	36	63	58	77	87
Yemen	-	16	3	5	2	10	4	15	3	3	2
Middle East nfd	-	-	-	4	7	11	14	20	15	28	15
<i>Total</i>	<i>3,890</i>	<i>3,068</i>	<i>3,019</i>	<i>2,538</i>	<i>2,971</i>	<i>3,160</i>	<i>2,520</i>	<i>3,835</i>	<i>3,215</i>	<i>3,587</i>	<i>3,743</i>
TOTAL NORTH AFRICA & THE MIDDLE EAST	4,579	3,594	3,489	3,051	3,491	3,778	3,020	4,888	4,869	5,431	5,166
SOUTHEAST ASIA											
Brunei	5	4	8	5	-	10	2	7	12	6	4
Burma (Myanmar)	148	200	81	91	65	109	111	92	93	142	165
Cambodia	572	356	230	145	99	168	211	240	183	208	205
East Timor (e)	-	-	-	-	-	3	3	3	9	4	6
Indonesia (e)	725	624	666	953	1,209	1,651	1,623	1,300	1,138	806	851
Laos	23	27	15	25	11	35	26	22	26	28	30
Malaysia	321	335	233	348	436	574	403	503	819	652	628
Philippines	1,632	1,302	1,359	1,874	1,742	1,664	1,312	1,490	1,828	1,915	2,072
Singapore	187	205	163	157	212	350	301	307	423	559	427
Thailand	318	284	181	216	202	295	468	434	369	473	554
Viet Nam	1,393	1,340	1,000	875	535	602	714	928	820	838	1,142
TOTAL SOUTHEAST ASIA	5,324	4,677	3,936	4,689	4,511	5,461	5,174	5,326	5,720	5,631	6,084

(e) East Timor previously recorded under Indonesia, care should be taken when interpreting the data.

NEW SOUTH WALES

TABLE 2.1 (CONTD) SETTLER ARRIVALS BY BIRTHPLACE, 1995-96 TO 2005-06

BIRTHPLACE	1995-96	1996-97	1997-98	1998-99	1999-00	2000-01	2001-02	2002-03	2003-04	2004-05	2005-06
NORTHEAST ASIA											
China (f)	7,057	4,882	2,617	3,902	4,407	5,945	4,214	4,221	5,010	6,273	5,296
Hong Kong (g)	2,408	2,245	1,825	1,101	838	873	495	496	525	602	495
Japan	240	197	190	236	226	248	194	221	229	257	240
Korea	506	487	379	430	521	900	491	582	664	1,020	1,156
Macau (g)	63	46	33	29	27	15	15	5	12	12	9
Mongolia	-	-	3	-	2	-	1	8	3	2	5
Taiwan	670	800	633	608	636	1,009	680	364	314	242	191
TOTAL NORTHEAST ASIA	10,944	8,657	5,680	6,306	6,657	8,990	6,090	5,897	6,757	8,408	7,392
SOUTHERN ASIA											
Bangladesh	563	374	235	345	631	750	306	302	405	492	575
Bhutan	-	-	5	1	-	2	-	1	-	-	-
India	1,901	1,406	1,367	1,329	2,352	3,137	2,388	2,759	3,639	4,156	4,615
Maldives	-	-	-	1	-	1	-	-	-	4	-
Nepal	40	31	10	25	78	154	110	127	150	191	218
Pakistan	429	409	251	388	596	786	495	444	578	762	680
Sri Lanka	783	555	549	422	546	884	713	618	506	762	618
TOTAL SOUTHERN ASIA	3,716	2,775	2,417	2,511	4,203	5,714	4,012	4,251	5,278	6,367	6,706
CENTRAL ASIA											
Afghanistan	387	174	281	379	470	275	290	443	507	830	1,053
Armenia (d)	15	24	13	-	6	2	4	8	8	5	4
Azerbaijan (d)	1	-	1	1	3	1	8	3	3	4	3
Georgia (d)	2	9	4	-	5	6	5	7	1	5	2
Kazakhstan (d)	4	13	6	-	7	9	5	7	22	7	24
Kyrgyz Republic (d)	2	2	-	1	6	1	2	1	5	3	6
Tajikistan (d)	-	-	-	-	-	1	2	1	-	-	3
Turkmenistan (d)	1	-	-	-	-	-	1	-	2	-	5
Uzbekistan (d)	20	12	1	3	6	2	4	6	11	11	16
TOTAL CENTRAL ASIA	432	234	306	384	503	297	321	476	559	865	1,116
NORTHERN AMERICA											
Bermuda	3	3	5	1	-	1	1	3	-	3	1
Canada	329	349	317	236	251	280	206	226	211	235	299
U.S.A.	671	670	573	435	419	508	418	523	496	621	645
TOTAL NORTHERN AMERICA	1,003	1,022	895	672	670	789	625	752	707	859	945

(d) As reliable data are not available for component countries prior to 1995-96, care should be taken when interpreting the data.

(f) Excluding SARs and Taiwan.

(g) SAR of China.

NEW SOUTH WALES

TABLE 2.1 (CONTD) SETTLER ARRIVALS BY BIRTHPLACE, 1995-96 TO 2005-06

BIRTHPLACE	1995-96	1996-97	1997-98	1998-99	1999-00	2000-01	2001-02	2002-03	2003-04	2004-05	2005-06
SOUTH AMERICA, CENTRAL AMERICA & THE CARIBBEAN											
<i>South America</i>											
Argentina	62	65	34	36	21	45	21	76	167	179	110
Bolivia	14	12	4	19	12	13	12	6	16	5	8
Brazil	68	73	31	44	53	38	68	92	94	194	162
Chile	171	104	77	93	76	76	77	105	106	91	93
Colombia	46	62	40	60	64	79	97	117	94	134	131
Ecuador	43	17	6	10	14	29	19	32	43	32	38
Falkland Islands	-	2	1	-	-	-	1	-	-	-	1
French Guiana	-	-	-	1	-	1	-	-	1	-	-
Guyana	2	4	2	1	5	1	-	-	-	-	2
Paraguay	5	4	2	2	3	1	6	-	2	1	7
Peru	150	117	57	83	80	89	71	108	102	122	175
Suriname	2	1	-	1	-	-	-	5	4	1	-
Uruguay	36	27	16	18	10	17	16	30	38	46	52
Venezuela	34	60	30	26	15	26	25	37	22	69	90
<i>Total</i>	<i>633</i>	<i>548</i>	<i>300</i>	<i>394</i>	<i>353</i>	<i>415</i>	<i>413</i>	<i>608</i>	<i>689</i>	<i>874</i>	<i>869</i>
<i>Central America</i>											
Belize	7	-	-	-	-	1	-	1	-	-	-
Costa Rica	5	-	4	-	3	2	3	-	-	3	5
El Salvador	38	29	23	3	8	7	3	3	13	5	10
Guatemala	3	3	-	2	3	5	3	1	4	-	3
Honduras	8	2	1	-	-	-	1	3	3	3	1
Mexico	13	25	15	13	13	6	24	21	16	26	69
Nicaragua	16	1	1	3	1	-	3	2	-	1	3
Panama	1	-	1	1	1	1	1	1	2	3	6
Central America nfd	-	-	-	-	-	1	-	-	1	-	-
<i>Total</i>	<i>91</i>	<i>60</i>	<i>45</i>	<i>22</i>	<i>29</i>	<i>23</i>	<i>38</i>	<i>32</i>	<i>39</i>	<i>41</i>	<i>97</i>
<i>The Caribbean</i>											
Anguilla	-	-	1	-	-	-	-	-	-	-	-
Aruba	-	1	-	-	1	-	-	-	-	-	-
Bahamas	1	-	2	1	2	1	2	1	2	1	1
Barbados	4	2	1	1	-	1	1	-	1	2	1
Cayman Islands	-	1	-	1	-	1	1	-	1	1	-
Cuba	7	4	1	6	5	6	7	8	10	8	11
Dominica	-	1	-	-	-	-	-	-	1	-	-
Dominican Republic	1	-	-	1	-	-	3	-	1	-	3
Grenada	1	-	1	-	1	-	-	-	-	-	1
Guadeloupe	-	-	-	-	-	-	1	1	-	-	-
Haiti	-	-	1	-	1	-	-	-	-	-	3
Jamaica	3	3	8	4	3	10	4	3	3	7	7
Martinique	2	-	-	-	1	-	-	-	-	-	-
Montserrat	3	-	-	-	-	-	-	-	-	-	1
Netherlands Antilles	-	-	-	1	-	-	4	-	-	-	3
Puerto Rico	-	-	-	-	-	-	2	1	1	-	-
St Kitts And Nevis	-	-	-	-	-	-	-	-	-	-	-

NEW SOUTH WALES

TABLE 2.1 (CONTD) SETTLER ARRIVALS BY BIRTHPLACE, 1995-96 TO 2005-06

BIRTHPLACE	1995-96	1996-97	1997-98	1998-99	1999-00	2000-01	2001-02	2002-03	2003-04	2004-05	2005-06
<i>The Caribbean (continued)</i>											
St Lucia	-	-	-	-	-	-	-	-	-	-	2
St Vincent And The Grenadines	-	1	-	-	1	-	-	-	-	-	1
Trinidad And Tobago	3	4	4	1	4	3	2	-	5	8	6
Turks And Caicos Islands	-	-	-	-	-	-	-	-	-	-	1
Virgin Islands United States	-	-	-	-	-	-	-	-	-	-	1
<i>Total</i>	<i>25</i>	<i>17</i>	<i>19</i>	<i>16</i>	<i>19</i>	<i>22</i>	<i>27</i>	<i>14</i>	<i>25</i>	<i>27</i>	<i>42</i>
TOTAL SOUTH AMERICA, CENTRAL AMERICA & THE CARIBBEAN	749	625	364	432	401	460	478	654	753	942	1,008
SUB-SAHARAN AFRICA											
<i>Central & West Africa</i>											
Burkina Faso	-	1	-	-	-	-	3	-	-	-	-
Cameroon	-	1	1	1	1	-	1	5	3	2	1
Central African Republic	-	1	-	-	-	-	-	-	-	-	-
Chad	1	-	-	-	-	-	-	-	-	1	-
Congo	-	-	-	-	-	4	2	3	33	59	34
Congo Democratic Republic	4	5	1	-	3	2	3	-	4	4	27
Cote D'Ivoire	-	-	1	-	-	1	-	2	2	30	26
Gabon	-	-	-	-	-	-	-	-	-	2	-
Gambia	1	4	2	2	-	-	1	2	-	-	2
Ghana	67	84	54	112	65	56	42	72	73	88	115
Guinea	-	-	1	-	-	-	5	10	6	58	46
Guinea-Bissau	-	-	-	-	-	-	1	1	-	-	1
Liberia	-	1	4	-	-	2	25	55	37	254	190
Mali	-	-	-	-	-	-	-	-	1	-	-
Mauritania	-	-	-	1	-	-	-	-	-	-	1
Niger	3	6	7	-	3	6	1	-	-	2	3
Nigeria	21	18	29	56	30	33	49	41	35	53	69
Senegal	3	7	8	2	3	1	8	1	3	4	5
Sierra Leone	3	-	3	4	55	63	160	95	64	250	332
Togo	-	1	-	-	-	3	1	1	2	-	1
<i>Total</i>	<i>103</i>	<i>129</i>	<i>111</i>	<i>178</i>	<i>160</i>	<i>171</i>	<i>302</i>	<i>288</i>	<i>263</i>	<i>807</i>	<i>853</i>
<i>Southern & East Africa</i>											
Angola	-	1	-	3	5	-	2	1	-	2	1
Botswana	100	22	21	1	6	9	4	4	6	11	6
Burundi	-	-	-	1	-	-	1	5	22	66	78
Djibouti	1	3	-	1	3	1	1	1	1	2	-
Eritrea (h)	16	26	5	13	17	21	31	10	19	21	17
Ethiopia (h)	80	55	50	62	65	55	65	134	120	56	63
Kenya	49	43	47	48	35	66	79	153	140	158	158
Lesotho	1	2	-	-	-	1	3	1	-	1	1
Madagascar	1	-	-	1	-	-	1	2	1	-	1
Malawi	3	2	2	4	4	4	9	3	5	8	2

(h) As reliable data are not available for component countries prior to 1995-96, care should be taken when interpreting the data.

NEW SOUTH WALES

TABLE 2.1 (CONTD) SETTLER ARRIVALS BY BIRTHPLACE, 1995-96 TO 2005-06

BIRTHPLACE	1995-96	1996-97	1997-98	1998-99	1999-00	2000-01	2001-02	2002-03	2003-04	2004-05	2005-06
<i>Southern & East Africa (continued)</i>											
Mauritius	33	24	37	20	40	34	33	34	45	44	25
Mozambique	2	2	9	-	4	3	3	2	4	4	3
Namibia	4	1	8	6	11	13	21	14	3	19	5
Reunion	1	1	-	4	-	-	1	-	1	-	1
Rwanda	1	-	-	-	1	1	-	1	12	15	10
St Helena	-	-	-	-	-	-	-	1	-	-	1
Seychelles	1	5	-	2	4	-	5	2	11	-	1
Somalia	114	136	194	115	64	72	74	45	32	58	58
South Africa	1,395	1,284	1,775	1,924	2,016	2,148	1,912	1,454	1,732	1,464	995
Swaziland	2	-	1	5	2	1	3	2	1	-	2
Tanzania	11	8	9	2	4	7	10	7	12	49	58
Uganda	11	5	5	7	6	8	18	25	38	75	39
Zambia	25	18	19	28	30	31	43	24	36	16	16
Zimbabwe	66	47	68	99	112	167	199	205	332	342	346
Southern & East Africa nfd	-	-	-	-	-	1	-	-	1	-	-
<i>Total</i>	<i>1,917</i>	<i>1,685</i>	<i>2,250</i>	<i>2,346</i>	<i>2,429</i>	<i>2,643</i>	<i>2,518</i>	<i>2,130</i>	<i>2,574</i>	<i>2,411</i>	<i>1,887</i>
TOTAL											
SUB-SAHARAN AFRICA	2,020	1,814	2,361	2,524	2,589	2,814	2,820	2,418	2,837	3,218	2,740
SUPPLEMENTARY CODES (i)											
Europe & USSR nfd	-	-	-	1	-	-	-	-	-	-	-
Fmr Ussr & Baltic States nfd	413	370	144	288	273	275	301	275	223	267	269
TOTAL											
SUPPLEMENTARY CODES	413	370	144	289	273	275	301	275	223	267	269
NOT STATED	21	18	18	21	38	24	16	4	16	2	4
TOTAL ALL COUNTRIES	44,327	37,212	31,694	35,141	39,311	46,745	35,301	36,431	40,561	44,746	44,661

(i) Supplementary codes cannot be classified to any major region in the Standard Australian Classification of Countries (SACC). This may lead to under reporting of their component countries in the rest of the table, care should be taken when interpreting the data.

VICTORIA

Table 3.1 SETTLER ARRIVALS BY BIRTHPLACE, 1995-96 TO 2005-06

BIRTHPLACE	1995-96	1996-97	1997-98	1998-99	1999-00	2000-01	2001-02	2002-03	2003-04	2004-05	2005-06
OCEANIA											
<i>Australia & External Territories (a)</i>	102	58	56	47	58	131	82	81	95	90	117
<i>New Zealand</i>	1,682	1,727	2,081	2,841	3,663	4,806	3,156	2,242	2,549	2,912	3,168
<i>Melanesia</i>											
New Caledonia	1	2	1	1	6	-	2	-	-	-	1
Papua New Guinea	7	10	4	3	6	8	8	13	12	7	7
Solomon Islands	1	5	3	1	3	2	-	2	7	1	-
Vanuatu	1	1	4	5	1	-	3	3	4	-	6
<i>Total</i>	10	18	12	10	16	10	13	18	23	8	14
<i>Micronesia</i>											
Guam	-	1	-	-	-	-	-	-	-	-	-
Kiribati	4	4	2	2	-	-	2	1	1	1	-
Micronesia Federated States	-	1	2	-	-	-	1	3	-	-	-
Nauru	4	-	2	1	2	3	12	5	1	4	4
Micronesia nfd	-	-	-	-	1	-	-	-	-	-	-
<i>Total</i>	8	6	6	3	3	3	15	9	2	5	4
<i>Polynesia (excluding Hawaii)</i>											
Cook Islands	28	82	68	57	68	61	25	24	28	32	27
Fiji	246	252	222	245	288	331	265	279	312	316	331
French Polynesia	-	2	-	2	-	2	-	-	-	2	-
Niue	4	2	-	9	10	7	3	1	5	2	2
Samoa	146	180	154	183	174	233	116	97	111	145	126
Samoa American	-	1	-	4	2	-	5	2	-	1	-
Tokelau	3	3	-	1	-	1	2	-	-	1	-
Tonga	21	17	42	43	58	70	38	39	44	42	46
Tuvalu	3	-	-	-	1	-	-	-	-	1	2
<i>Total</i>	451	539	486	544	601	705	454	442	500	542	534
TOTAL OCEANIA	2,253	2,348	2,641	3,445	4,341	5,655	3,720	2,792	3,169	3,557	3,837
EUROPE											
<i>United Kingdom & Ireland</i>											
U.K.	1,555	1,414	1,300	1,190	1,312	1,529	1,446	2,020	2,854	2,877	3,558
Ireland	102	125	92	81	106	109	91	114	177	163	171
<i>Total</i>	1,657	1,539	1,392	1,271	1,418	1,638	1,537	2,134	3,031	3,040	3,729
<i>Western Europe</i>											
Austria	22	15	9	13	26	23	17	19	23	29	17
Belgium	18	12	10	11	16	12	13	12	15	19	15
France	66	59	49	58	35	38	47	65	69	74	54
Germany	190	168	140	162	165	174	158	190	145	193	216
Luxembourg	1	-	2	-	-	-	-	-	-	-	3
Monaco	2	-	-	-	-	-	-	-	-	-	-
Netherlands	104	96	70	60	88	69	60	104	92	79	131
Switzerland	37	44	24	22	32	29	42	33	32	39	29
<i>Total</i>	440	394	304	326	362	345	337	423	376	433	465

(a) The Australia component consists of persons born in Australia who have settled overseas and returned.

VICTORIA**Table 3.1**(CONTD) **SETTLER ARRIVALS BY BIRTHPLACE, 1995-96 TO 2005-06**

BIRTHPLACE	1995-96	1996-97	1997-98	1998-99	1999-00	2000-01	2001-02	2002-03	2003-04	2004-05	2005-06
<i>Northern Europe</i>											
Denmark	20	22	18	13	22	17	24	19	13	18	14
Finland	14	8	2	15	4	10	9	9	12	11	15
Iceland	-	1	-	2	1	-	-	-	1	-	-
Norway	8	13	4	1	12	6	2	10	6	13	15
Sweden	39	30	19	16	22	29	32	24	34	30	41
<i>Total</i>	<i>81</i>	<i>74</i>	<i>43</i>	<i>47</i>	<i>61</i>	<i>62</i>	<i>67</i>	<i>62</i>	<i>66</i>	<i>72</i>	<i>85</i>
<i>Southern Europe</i>											
Andorra	1	-	-	-	-	-	-	-	-	-	-
Gibraltar	3	3	1	2	1	-	-	-	1	2	1
Italy	103	78	60	58	65	47	87	39	49	38	62
Malta	29	17	13	22	9	14	10	40	25	51	16
Portugal	51	12	11	1	4	9	2	7	6	17	9
Spain	18	14	16	10	7	17	8	25	14	27	16
<i>Total</i>	<i>205</i>	<i>124</i>	<i>101</i>	<i>93</i>	<i>86</i>	<i>87</i>	<i>107</i>	<i>111</i>	<i>95</i>	<i>135</i>	<i>104</i>
<i>South Eastern Europe</i>											
Albania	21	53	55	32	29	25	36	218	74	75	78
Bosnia & Herzegovina (b)	1,094	574	672	459	242	304	149	72	37	34	43
Bulgaria	19	21	19	18	30	34	22	22	47	40	36
Croatia (b)	213	195	279	229	227	241	131	83	44	19	33
Cyprus	33	36	31	16	12	22	18	17	31	10	11
Fmr. Yugo. Rep. of Macedonia	253	170	201	165	123	165	154	154	184	147	164
Greece	111	92	73	53	35	34	43	37	35	27	39
Moldava	8	13	1	2	2	-	3	3	10	1	9
Romania	147	129	114	132	112	113	105	120	99	107	127
Serbia & Montenegro (b)	-	-	-	991	833	896	693	562	307	244	143
Slovenia (b)	3	5	6	9	8	6	1	1	6	4	-
Former Yugoslavia nfd (b)	999	651	533	-	-	-	-	-	-	-	-
<i>Total</i>	<i>2,901</i>	<i>1,939</i>	<i>1,984</i>	<i>2,106</i>	<i>1,653</i>	<i>1,840</i>	<i>1,355</i>	<i>1,289</i>	<i>874</i>	<i>708</i>	<i>683</i>
<i>Eastern Europe</i>											
Belarus (c)	6	13	6	3	6	5	4	2	4	14	14
Czech Republic (d)	11	17	7	1	3	5	3	2	4	5	8
Estonia (c)	3	4	1	-	2	2	4	2	4	5	2
Former Czechoslovakia (d)	6	15	14	17	21	21	29	29	24	18	16
Hungary	31	36	15	11	13	9	20	26	21	24	31
Latvia (c)	3	15	5	3	4	6	9	-	11	8	6
Lithuania (c)	5	14	-	11	8	6	9	3	13	6	7
Poland	161	152	104	82	56	69	66	72	117	102	77
Russian Federation (c)	20	74	59	11	11	16	19	20	54	148	124
Slovakia (d)	6	17	6	1	2	-	2	1	7	3	3
Ukraine	174	206	127	13	28	27	40	24	85	64	75
Eastern Europe nfd	-	-	-	-	-	-	-	-	1	-	-
<i>Total</i>	<i>426</i>	<i>563</i>	<i>344</i>	<i>153</i>	<i>154</i>	<i>166</i>	<i>205</i>	<i>181</i>	<i>345</i>	<i>397</i>	<i>363</i>
TOTAL EUROPE	5,710	4,633	4,168	3,996	3,734	4,138	3,608	4,200	4,787	4,785	5,429

(b) As reliable data are not available for component countries prior to 1995-96, care should be taken when interpreting the data. Serbia and Montenegro was previously called the Federal Republic of Yugoslavia and since 1998-99 contains the Former Yugoslavia nfd.

(c) As reliable data are not available for component countries prior to 1995-96, care should be taken when interpreting the data.

(d) As reliable data are not available for component countries prior to 1995-96, care should be taken when interpreting the data.

VICTORIA**Table 3.1**(CONTD) **SETTLER ARRIVALS BY BIRTHPLACE, 1995-96 TO 2005-06**

BIRTHPLACE	1995-96	1996-97	1997-98	1998-99	1999-00	2000-01	2001-02	2002-03	2003-04	2004-05	2005-06
NORTH AFRICA & THE MIDDLE EAST											
<i>North Africa</i>											
Algeria	5	6	7	8	2	8	6	7	7	5	7
Egypt	123	94	87	116	100	128	121	199	307	308	288
Libya	5	6	6	2	1	7	4	8	5	6	9
Morocco	7	7	7	6	8	2	5	18	10	10	11
Sudan	81	81	71	158	106	257	326	919	1,530	2,022	1,332
Tunisia	1	3	2	2	1	4	-	3	-	1	1
North Africa nfd	-	-	-	1	-	-	-	-	-	-	-
<i>Total</i>	<i>222</i>	<i>197</i>	<i>180</i>	<i>293</i>	<i>218</i>	<i>406</i>	<i>462</i>	<i>1,154</i>	<i>1,859</i>	<i>2,352</i>	<i>1,648</i>
<i>The Middle East</i>											
Bahrain	9	3	4	-	4	6	1	10	6	8	9
Gaza Strip & West Bank	2	4	-	4	6	6	4	1	1	2	-
Iran	176	129	114	115	171	169	98	164	198	206	175
Iraq	719	511	477	419	527	385	396	768	549	595	624
Israel	31	39	52	42	48	38	81	88	157	150	141
Jordan	23	17	12	24	25	26	32	16	47	47	43
Kuwait	26	16	28	23	60	33	11	34	35	32	19
Lebanon	268	208	258	200	239	332	230	375	268	338	317
Oman	2	2	5	1	6	4	3	8	2	5	9
Qatar	2	5	1	1	-	5	4	2	1	2	3
Saudi Arabia	27	27	9	17	9	13	17	20	25	26	22
Syria	55	39	36	48	44	72	36	65	62	62	57
Turkey	397	327	293	243	231	201	286	338	343	312	237
United Arab Emirates	14	24	23	20	12	14	54	89	59	85	101
Yemen	1	1	2	4	15	1	3	3	14	4	4
Middle East nfd	-	-	-	1	5	2	6	3	15	26	14
<i>Total</i>	<i>1,752</i>	<i>1,352</i>	<i>1,314</i>	<i>1,162</i>	<i>1,402</i>	<i>1,307</i>	<i>1,262</i>	<i>1,984</i>	<i>1,782</i>	<i>1,900</i>	<i>1,775</i>
TOTAL NORTH AFRICA & THE MIDDLE EAST	1,974	1,549	1,494	1,455	1,620	1,713	1,724	3,138	3,641	4,252	3,423
SOUTHEAST ASIA											
Brunei	9	5	3	9	7	16	6	17	10	20	12
Burma (Myanmar)	34	49	24	17	32	52	45	25	31	158	320
Cambodia	555	332	201	124	98	204	186	279	279	295	280
East Timor (e)	-	-	-	-	-	10	4	4	8	13	17
Indonesia (e)	304	307	329	504	635	910	1,074	709	601	534	406
Laos	13	6	5	12	3	9	6	8	13	35	6
Malaysia	322	303	299	420	574	847	773	1,008	1,439	1,082	1,062
Philippines	670	621	528	548	596	666	634	824	1,165	1,161	1,340
Singapore	135	183	150	149	211	396	406	500	729	881	829
Thailand	123	91	44	95	110	171	273	257	247	278	417
Viet Nam	1,475	1,084	886	867	601	697	760	1,016	876	935	910
TOTAL SOUTHEAST ASIA	3,640	2,981	2,469	2,745	2,867	3,978	4,167	4,647	5,398	5,392	5,599

(e) East Timor previously recorded under Indonesia, care should be taken when interpreting the data.

VICTORIA**Table 3.1**(CONTD) **SETTLER ARRIVALS BY BIRTHPLACE, 1995-96 TO 2005-06**

BIRTHPLACE	1995-96	1996-97	1997-98	1998-99	1999-00	2000-01	2001-02	2002-03	2003-04	2004-05	2005-06
NORTHEAST ASIA											
China (f)	2,944	1,993	1,075	1,555	1,651	1,835	1,607	1,611	2,545	3,059	3,142
Hong Kong (g)	722	633	509	338	259	383	232	298	338	280	266
Japan	70	66	73	95	101	91	118	101	124	126	164
Korea	53	47	56	65	52	131	101	130	166	317	435
Macau (g)	31	16	11	16	5	7	10	12	8	13	4
Mongolia	-	-	-	-	-	-	-	-	-	9	3
Taiwan	209	237	256	189	275	432	248	166	138	120	198
TOTAL NORTHEAST ASIA	4,029	2,992	1,980	2,258	2,343	2,879	2,316	2,318	3,319	3,924	4,212
SOUTHERN ASIA											
Bangladesh	111	62	27	29	92	67	54	76	82	177	167
Bhutan	-	-	2	-	-	-	-	-	-	-	-
India	1,034	772	810	694	1,435	2,209	1,835	2,068	3,236	3,491	4,295
Maldives	-	2	1	-	1	-	4	3	1	1	-
Nepal	6	4	14	4	16	47	34	33	44	64	44
Pakistan	98	104	132	106	159	273	197	197	310	387	364
Sri Lanka	858	629	532	363	534	858	1,034	977	791	1,177	1,329
TOTAL SOUTHERN ASIA	2,107	1,573	1,518	1,196	2,237	3,454	3,158	3,354	4,464	5,297	6,199
CENTRAL ASIA											
Afghanistan	180	136	157	275	181	138	190	265	364	326	738
Armenia (d)	15	8	9	6	6	1	3	2	3	-	1
Azerbaijan (d)	4	2	3	-	9	-	2	-	3	3	3
Georgia (d)	6	3	-	1	3	3	3	1	4	-	1
Kazakhstan (d)	6	16	10	3	4	4	2	4	6	10	9
Kyrgyz Republic (d)	-	-	4	2	-	-	1	2	8	4	11
Tajikistan (d)	-	-	-	-	1	-	-	1	-	-	1
Turkmenistan (d)	-	-	-	-	-	-	-	3	-	-	1
Uzbekistan (d)	19	2	8	4	1	5	8	3	11	6	15
TOTAL CENTRAL ASIA	230	167	191	291	205	151	209	281	399	349	780
NORTHERN AMERICA											
Bermuda	-	1	-	1	1	4	7	2	-	-	1
Canada	153	159	119	90	116	114	105	119	150	134	131
U.S.A.	295	297	237	218	233	261	271	292	272	359	324
TOTAL NORTHERN AMERICA	448	457	356	309	350	379	383	413	422	493	456

(d) As reliable data are not available for component countries prior to 1995-96, care should be taken when interpreting the data.

(f) Excluding SARs and Taiwan.

(g) SAR of China.

VICTORIA

Table 3.1(CONTD) **SETTLER ARRIVALS BY BIRTHPLACE, 1995-96 TO 2005-06**

BIRTHPLACE	1995-96	1996-97	1997-98	1998-99	1999-00	2000-01	2001-02	2002-03	2003-04	2004-05	2005-06
SOUTH AMERICA, CENTRAL AMERICA & THE CARIBBEAN											
<i>South America</i>											
Argentina	29	20	15	15	14	17	28	38	102	69	68
Bolivia	1	2	-	-	1	1	1	1	-	2	2
Brazil	13	16	6	9	20	25	34	42	36	41	72
Chile	51	34	33	69	29	37	33	50	41	51	43
Colombia	18	18	6	8	7	20	20	43	36	49	39
Ecuador	1	3	2	1	1	2	1	2	3	4	3
Falkland Islands	1	-	-	1	-	-	-	-	-	-	-
French Guiana	-	1	-	-	-	-	-	-	-	-	-
Guyana	3	2	-	-	1	1	-	-	2	-	-
Paraguay	1	1	-	-	-	4	5	2	-	1	6
Peru	28	15	3	8	8	13	21	38	18	29	53
Suriname	-	-	-	-	-	-	-	-	-	-	1
Uruguay	5	2	2	5	1	4	7	14	8	14	9
Venezuela	5	4	14	1	2	3	6	6	8	22	28
South America nfd	1	-	-	-	-	-	2	-	-	-	-
<i>Total</i>	<i>157</i>	<i>118</i>	<i>81</i>	<i>117</i>	<i>84</i>	<i>127</i>	<i>158</i>	<i>236</i>	<i>254</i>	<i>282</i>	<i>324</i>
<i>Central America</i>											
Belize	-	-	-	-	1	-	-	-	-	-	-
Costa Rica	2	-	1	1	-	-	2	1	-	1	-
El Salvador	47	30	11	23	8	9	15	12	6	18	11
Guatemala	11	6	2	3	3	4	4	1	2	1	2
Honduras	1	-	-	1	-	-	-	-	-	1	2
Mexico	14	9	5	3	2	10	8	25	16	18	46
Nicaragua	2	7	1	2	1	-	-	-	-	-	-
Panama	-	-	-	-	-	-	-	1	-	1	1
Central America nfd	-	-	-	-	2	-	-	-	-	-	-
<i>Total</i>	<i>77</i>	<i>52</i>	<i>20</i>	<i>33</i>	<i>17</i>	<i>23</i>	<i>29</i>	<i>40</i>	<i>24</i>	<i>40</i>	<i>62</i>
<i>The Caribbean</i>											
Antigua And Barbuda	-	-	-	-	-	-	-	-	-	-	1
Bahamas	-	-	-	-	-	-	-	-	2	-	-
Barbados	1	1	1	-	-	1	-	1	-	-	2
Cayman Islands	-	-	2	-	-	-	-	-	-	-	-
Cuba	-	1	3	5	2	4	3	4	8	5	9
Dominica	-	-	-	-	-	-	-	-	1	-	-
Dominican Republic	-	-	1	3	2	-	1	1	2	-	-
Guadeloupe	-	-	-	-	-	-	1	1	-	1	-
Haiti	-	-	2	-	-	-	-	1	-	-	-
Jamaica	5	-	10	1	1	5	4	1	1	2	5
Puerto Rico	1	1	-	-	-	-	-	-	-	1	-
St Lucia	-	-	-	-	-	-	-	-	-	1	-
Trinidad & Tobago	3	1	1	-	-	1	1	1	11	9	3
<i>Total</i>	<i>10</i>	<i>4</i>	<i>20</i>	<i>9</i>	<i>5</i>	<i>11</i>	<i>10</i>	<i>10</i>	<i>25</i>	<i>19</i>	<i>20</i>
TOTAL SOUTH AMERICA, CENTRAL AMERICA & THE CARIBBEAN											
	244	174	121	159	106	161	197	286	303	341	406

VICTORIA**Table 3.1**(CONTD) **SETTLER ARRIVALS BY BIRTHPLACE, 1995-96 TO 2005-06**

BIRTHPLACE	1995-96	1996-97	1997-98	1998-99	1999-00	2000-01	2001-02	2002-03	2003-04	2004-05	2005-06
SUB-SAHARAN AFRICA											
<i>Central & West Africa</i>											
Benin	-	-	-	-	-	-	-	-	-	1	-
Burkina Faso	-	-	-	-	-	-	-	1	-	-	-
Cameroon	-	-	-	-	1	-	2	2	-	1	2
Cape Verde	-	-	1	-	-	-	-	-	-	-	-
Chad	-	-	-	-	-	-	-	-	-	-	1
Congo	-	1	-	-	-	4	2	1	7	11	21
Congo Democratic Republic	8	3	2	5	-	1	1	1	2	3	41
Cote D'Ivoire	-	-	1	2	-	-	-	2	-	29	8
Gambia	-	-	-	-	-	-	-	1	-	-	1
Ghana	17	18	24	11	18	5	17	7	33	17	28
Guinea	-	-	-	-	-	3	-	2	1	21	12
Guinea-Bissau	-	-	-	-	-	-	2	-	-	-	-
Liberia	-	-	-	-	-	3	-	2	2	176	54
Mali	-	-	-	-	-	-	-	1	-	1	1
Mauritania	2	2	-	-	-	-	-	-	-	1	1
Niger	1	3	3	-	1	1	1	-	-	-	-
Nigeria	16	7	8	16	10	31	30	16	19	29	33
Senegal	4	-	-	-	2	-	1	2	1	2	3
Sierra Leone	-	1	2	-	-	-	6	1	9	15	35
Togo	-	-	-	-	-	-	-	-	-	-	1
<i>Total</i>	48	35	41	34	32	48	62	39	74	307	242
<i>Southern & East Africa</i>											
Angola	2	5	-	-	-	1	7	-	-	-	1
Botswana	42	24	7	3	1	4	4	7	1	5	3
Burundi	-	-	-	-	1	-	-	-	1	58	67
Comoros	-	2	-	-	-	3	-	1	-	-	-
Djibouti	1	-	1	8	2	2	2	4	1	6	1
Eritrea (h)	105	64	39	120	79	54	53	59	74	67	68
Ethiopia (h)	248	178	138	187	171	190	183	254	299	276	228
Kenya	25	33	21	43	51	52	87	126	151	241	162
Lesotho	-	-	-	-	-	1	2	1	1	4	-
Madagascar	-	-	-	5	1	-	-	5	1	-	-
Malawi	-	-	-	2	2	4	2	2	3	9	8
Mauritius	49	58	40	21	52	79	78	72	138	106	135

(h) As reliable data are not available for component countries prior to 1995-96, care should be taken when interpreting the data.

VICTORIA**Table 3.1**(CONTD) **SETTLER ARRIVALS BY BIRTHPLACE, 1995-96 TO 2005-06**

BIRTHPLACE	1995-96	1996-97	1997-98	1998-99	1999-00	2000-01	2001-02	2002-03	2003-04	2004-05	2005-06
<i>Southern & East Africa</i> (continued)											
Mozambique	4	1	-	2	-	-	4	8	1	2	1
Namibia	1	1	-	3	2	1	2	3	5	13	6
Rwanda	1	1	-	-	-	-	1	-	-	6	2
Seychelles	3	1	-	4	6	1	11	13	9	14	3
Somalia	285	203	339	241	137	184	218	116	125	85	99
South Africa	386	442	482	449	677	710	809	644	886	579	560
Swaziland	-	1	1	1	1	5	1	1	2	-	2
Tanzania	5	4	7	5	5	1	5	7	5	46	71
Uganda	4	5	2	5	5	6	5	8	7	32	28
Zambia	9	9	9	9	11	12	6	5	17	15	12
Zimbabwe	19	33	24	31	45	35	92	86	131	115	84
Southern & East Africa nfd	-	-	1	-	-	-	-	1	-	-	-
<i>Total</i>	<i>1,189</i>	<i>1,065</i>	<i>1,111</i>	<i>1,139</i>	<i>1,249</i>	<i>1,345</i>	<i>1,572</i>	<i>1,423</i>	<i>1,858</i>	<i>1,679</i>	<i>1,541</i>
TOTAL											
SUB-SAHARAN AFRICA	1,237	1,100	1,152	1,173	1,281	1,393	1,634	1,462	1,932	1,986	1,783
SUPPLEMENTARY CODES (i)											
Fmr Ussr & Baltic States nfd	378	278	139	224	229	255	253	212	191	199	170
TOTAL											
SUPPLEMENTARY CODES	378	278	139	224	229	255	253	212	191	199	170
NOT STATED	19	14	4	40	6	3	5	6	3	6	3
TOTAL ALL COUNTRIES	22,269	18,266	16,233	17,291	19,319	24,159	21,374	23,109	28,028	30,581	32,297

(i) Supplementary codes cannot be classified to any major region in the Standard Australian Classification of Countries (SACC). This may lead to under reporting of their component countries in the rest of the table, care should be taken when interpreting the data.

QUEENSLAND

Table 4.1 SETTLER ARRIVALS BY BIRTHPLACE, 1995-96 TO 2005-06

BIRTHPLACE	1995-96	1996-97	1997-98	1998-99	1999-00	2000-01	2001-02	2002-03	2003-04	2004-05	2005-06
OCEANIA											
<i>Australia & External Territories (a)</i>	125	103	93	71	92	122	94	102	126	145	155
<i>New Zealand</i>	4,714	5,287	6,365	7,268	8,080	8,389	5,669	5,037	6,231	7,736	8,866
<i>Melanesia</i>											
New Caledonia	4	7	1	-	9	6	5	2	4	7	2
Papua New Guinea	165	94	100	92	56	102	86	161	129	138	152
Solomon Islands	19	15	14	16	23	19	24	7	18	29	7
Vanuatu	9	5	2	3	7	4	7	9	9	4	6
<i>Total</i>	197	121	117	111	95	131	122	179	160	178	167
<i>Micronesia</i>											
Guam	1	-	-	-	-	-	-	3	7	2	1
Kiribati	-	5	3	2	1	4	4	3	3	4	3
Micronesia Federated States	1	2	-	-	-	-	-	-	-	2	-
Nauru	2	1	-	2	-	-	-	2	3	3	2
Northern Mariana Islands	-	-	-	1	-	-	-	-	1	-	-
Palau	-	-	-	-	1	-	-	-	-	-	-
<i>Total</i>	4	8	3	5	2	4	4	8	14	11	6
<i>Polynesia (excluding Hawaii)</i>											
Cook Islands	40	74	53	28	31	67	37	31	35	30	34
Fiji	301	315	201	268	303	381	263	253	336	302	365
French Polynesia	4	1	4	-	5	3	1	2	1	3	1
Niue	2	1	2	18	17	21	10	9	11	15	12
Samoa	295	290	366	374	350	354	224	154	250	266	191
Samoa American	-	-	-	4	4	-	4	1	9	4	5
Tokelau	1	-	5	3	4	14	4	9	10	9	7
Tonga	20	23	20	62	79	68	44	29	44	70	51
Tuvalu	-	5	5	4	6	5	1	4	2	3	2
<i>Total</i>	663	709	656	761	799	913	588	492	698	702	668
TOTAL OCEANIA	5,703	6,228	7,234	8,216	9,068	9,559	6,477	5,818	7,229	8,772	9,862
EUROPE											
<i>United Kingdom & Ireland</i>											
U.K.	2,329	1,892	1,921	1,896	2,030	2,061	1,850	2,676	4,160	4,189	5,068
Ireland	84	90	90	67	68	85	63	77	159	116	202
<i>Total</i>	2,413	1,982	2,011	1,963	2,098	2,146	1,913	2,753	4,319	4,305	5,270
<i>Western Europe</i>											
Austria	21	20	19	15	22	16	35	23	17	17	19
Belgium	14	9	2	10	7	18	20	10	11	6	21
France	46	40	34	36	30	24	48	50	64	60	52
Germany	187	170	142	154	141	170	152	153	164	183	224
Luxembourg	-	-	1	2	2	-	-	-	-	3	-
Netherlands	98	80	97	99	108	91	106	91	105	123	140
Switzerland	53	61	43	35	47	44	42	48	33	42	66
<i>Total</i>	419	380	338	351	357	363	403	375	394	434	522

(a) The Australia component consists of persons born in Australia who have settled overseas and returned.

QUEENSLAND

Table 4.1(CONTD) **SETTLER ARRIVALS BY BIRTHPLACE, 1995-96 TO 2005-06**

BIRTHPLACE	1995-96	1996-97	1997-98	1998-99	1999-00	2000-01	2001-02	2002-03	2003-04	2004-05	2005-06
<i>Northern Europe</i>											
Denmark	26	37	24	22	18	22	29	12	36	39	23
Finland	16	15	5	9	9	18	8	-	15	15	21
Greenland	-	-	-	-	-	1	-	-	-	-	-
Iceland	-	1	1	-	-	1	1	1	3	1	-
Norway	4	5	3	8	9	5	11	19	6	14	17
Sweden	39	27	26	21	31	17	31	45	32	47	20
<i>Total</i>	85	85	59	60	67	64	80	77	92	116	81
<i>Southern Europe</i>											
Gibraltar	1	-	-	-	1	-	1	1	-	1	1
Italy	21	25	21	18	16	24	21	22	31	38	19
Malta	6	1	3	2	5	1	3	2	8	9	3
Portugal	6	10	6	5	3	12	4	7	3	15	11
Spain	27	8	3	8	4	10	13	22	18	13	23
<i>Total</i>	61	44	33	33	29	47	42	54	60	76	57
<i>South Eastern Europe</i>											
Albania	8	3	5	2	8	14	7	17	16	10	11
Bosnia & Herzegovina (b)	424	260	288	134	59	75	45	15	16	21	12
Bulgaria	6	6	4	8	17	27	13	12	12	21	10
Croatia (b)	61	39	107	83	59	141	37	31	12	10	15
Cyprus	5	3	7	2	3	5	6	1	5	4	9
Fmr. Yugo. Rep. of Macedonia	9	5	11	15	13	46	11	8	11	4	9
Greece	23	21	5	10	6	4	7	6	8	6	7
Moldava	-	2	-	-	-	-	1	-	1	3	-
Romania	40	36	24	25	21	24	42	49	38	36	74
Serbia & Montenegro (b)	-	-	-	404	320	309	210	139	86	81	75
Slovenia (b)	6	4	12	3	1	3	-	-	-	-	10
Former Yugoslavia nfd (b)	196	161	135	-	-	-	-	-	-	-	-
<i>Total</i>	778	540	598	686	507	648	379	278	205	196	232
<i>Eastern Europe</i>											
Belarus (c)	-	4	-	4	2	3	-	3	2	2	3
Czech Republic (d)	5	13	4	1	4	3	5	1	2	2	11
Estonia (c)	-	1	-	1	-	1	1	1	1	3	2
Former Czechoslovakia (d)	9	1	2	15	18	24	21	14	18	21	18
Hungary	15	9	22	10	12	10	15	16	30	27	25
Latvia (c)	1	3	5	4	3	7	3	2	-	2	7
Lithuania (c)	-	-	-	-	4	1	-	2	1	2	2
Poland	46	35	31	19	33	40	32	30	35	40	72
Russian Federation (c)	10	20	21	9	6	20	18	6	24	30	38
Slovakia (d)	2	3	7	-	4	2	2	-	2	4	6
Ukraine	21	20	21	3	9	16	13	18	19	12	14
<i>Total</i>	109	109	113	66	95	127	110	93	134	145	198
TOTAL EUROPE	3,865	3,140	3,152	3,159	3,153	3,395	2,927	3,630	5,204	5,272	6,360

(b) As reliable data are not available for component countries prior to 1995-96, care should be taken when interpreting the data. Serbia and Montenegro was previously called the Federal Republic of Yugoslavia and since 1998-99 contains the Former Yugoslavia nfd.

(c) As reliable data are not available for component countries prior to 1995-96, care should be taken when interpreting the data.

(d) As reliable data are not available for component countries prior to 1995-96, care should be taken when interpreting the data.

QUEENSLAND**Table 4.1**(CONTD) **SETTLER ARRIVALS BY BIRTHPLACE, 1995-96 TO 2005-06**

BIRTHPLACE	1995-96	1996-97	1997-98	1998-99	1999-00	2000-01	2001-02	2002-03	2003-04	2004-05	2005-06
NORTH AFRICA & THE MIDDLE EAST											
<i>North Africa</i>											
Algeria	5	9	7	1	6	1	1	3	4	2	3
Egypt	12	20	9	15	34	33	19	55	57	69	50
Libya	1	1	1	-	1	1	-	1	2	-	3
Morocco	5	-	5	-	3	2	3	2	4	4	2
Sudan	24	1	38	49	60	121	140	440	606	708	590
Tunisia	-	1	1	2	-	3	1	1	-	-	3
North Africa nfd	-	-	-	-	-	-	1	-	-	-	-
<i>Total</i>	<i>47</i>	<i>32</i>	<i>61</i>	<i>67</i>	<i>104</i>	<i>161</i>	<i>165</i>	<i>502</i>	<i>673</i>	<i>783</i>	<i>651</i>
<i>The Middle East</i>											
Bahrain	3	4	2	1	-	2	2	7	-	-	3
Gaza Strip & West Bank	-	-	-	1	-	-	1	-	1	-	2
Iran	56	52	44	20	49	58	27	50	65	86	100
Iraq	43	53	27	44	44	70	74	170	45	43	64
Israel	17	17	10	12	3	10	18	25	22	28	19
Jordan	7	16	14	6	6	3	8	10	5	3	6
Kuwait	6	10	3	1	3	4	5	6	7	14	16
Lebanon	32	14	19	11	12	39	20	32	26	26	28
Oman	1	4	-	-	-	3	2	-	5	2	-
Qatar	1	1	-	-	-	-	1	1	1	-	1
Saudi Arabia	8	9	7	3	1	7	7	7	6	8	9
Syria	5	8	13	3	5	5	19	6	1	3	9
Turkey	19	19	20	15	26	9	31	30	38	29	24
United Arab Emirates	4	5	4	5	1	6	9	21	15	29	14
Yemen	-	-	1	-	1	-	2	4	18	1	-
Middle East nfd	-	-	-	-	-	1	2	3	1	3	1
<i>Total</i>	<i>202</i>	<i>212</i>	<i>164</i>	<i>122</i>	<i>151</i>	<i>217</i>	<i>228</i>	<i>372</i>	<i>256</i>	<i>275</i>	<i>296</i>
TOTAL NORTH AFRICA & THE MIDDLE EAST	249	244	225	189	255	378	393	874	929	1,058	947
SOUTHEAST ASIA											
Brunei	3	3	2	3	7	6	1	1	6	2	3
Burma (Myanmar)	7	10	13	5	6	10	10	7	9	24	17
Cambodia	35	25	27	17	13	51	30	22	34	34	49
East Timor (e)	-	-	-	-	-	1	2	1	2	-	2
Indonesia (e)	99	109	134	133	137	193	235	199	216	143	176
Laos	11	1	3	-	1	19	4	2	4	36	15
Malaysia	106	111	119	136	188	207	208	226	375	303	313
Philippines	516	448	468	469	488	436	492	493	627	625	758
Singapore	126	127	83	76	69	148	147	249	283	370	293
Thailand	103	48	52	75	86	93	189	168	171	247	269
Viet Nam	173	189	172	148	140	127	164	267	198	153	229
TOTAL SOUTHEAST ASIA	1,179	1,071	1,073	1,062	1,135	1,291	1,482	1,635	1,925	1,937	2,124

(e) East Timor previously recorded under Indonesia, care should be taken when interpreting the data.

QUEENSLAND

Table 4.1(CONTD) **SETTLER ARRIVALS BY BIRTHPLACE, 1995-96 TO 2005-06**

BIRTHPLACE	1995-96	1996-97	1997-98	1998-99	1999-00	2000-01	2001-02	2002-03	2003-04	2004-05	2005-06
NORTHEAST ASIA											
China (f)	576	410	306	299	339	513	409	402	576	717	640
Hong Kong (g)	942	730	667	356	241	165	123	136	143	235	139
Japan	189	138	179	165	150	164	175	170	226	222	225
Korea	93	131	116	89	104	195	85	104	137	240	252
Macau (g)	22	18	11	6	9	3	1	1	2	4	2
Mongolia	1	1	-	-	-	-	-	-	1	4	1
Taiwan	704	1,061	571	711	721	1,065	695	517	378	350	292
TOTAL NORTHEAST ASIA	2,527	2,489	1,850	1,626	1,564	2,105	1,488	1,330	1,463	1,772	1,551
SOUTHERN ASIA											
Bangladesh	28	32	12	12	29	81	43	22	48	23	26
Bhutan	-	-	-	-	-	-	-	-	-	-	1
India	202	134	173	172	273	409	365	324	449	622	713
Maldives	-	-	-	-	-	-	1	-	-	-	4
Nepal	5	9	3	3	7	16	9	3	23	26	16
Pakistan	26	50	25	21	39	75	46	39	53	58	51
Sri Lanka	133	83	73	55	81	96	103	103	96	125	151
TOTAL SOUTHERN ASIA	394	308	286	263	429	677	567	491	669	854	962
CENTRAL ASIA											
Afghanistan	26	12	21	15	27	11	48	50	52	123	157
Armenia (d)	-	-	-	-	-	-	-	-	-	-	1
Azerbaijan (d)	-	-	-	1	-	1	-	-	-	1	-
Georgia (d)	-	-	-	-	1	-	1	-	-	1	-
Kazakhstan (d)	-	-	5	-	-	3	-	3	4	3	9
Kyrgyz Republic (d)	1	-	2	-	-	-	4	6	1	5	1
Tajikistan (d)	-	-	-	-	-	-	-	-	-	1	-
Turkmenistan (d)	-	-	-	-	-	-	-	-	-	2	-
Uzbekistan (d)	-	-	-	-	1	-	-	1	5	10	9
TOTAL CENTRAL ASIA	27	12	28	16	29	15	53	60	62	146	177
NORTHERN AMERICA											
Bermuda	2	2	4	1	-	2	-	3	1	-	2
Canada	185	158	144	118	161	166	142	154	117	159	189
U.S.A.	326	259	206	199	189	236	240	251	304	302	348
TOTAL NORTHERN AMERICA	513	419	354	318	350	404	382	408	422	461	539

(d) As reliable data are not available for component countries prior to 1995-96, care should be taken when interpreting the data.

(f) Excluding SARs and Taiwan.

(g) SAR of China.

QUEENSLAND

Table 4.1(CONTD) **SETTLER ARRIVALS BY BIRTHPLACE, 1995-96 TO 2005-06**

BIRTHPLACE	1995-96	1996-97	1997-98	1998-99	1999-00	2000-01	2001-02	2002-03	2003-04	2004-05	2005-06
SOUTH AMERICA, CENTRAL AMERICA & THE CARIBBEAN											
<i>South America</i>											
Argentina	4	10	4	9	10	7	17	29	27	30	24
Bolivia	1	-	-	1	2	4	1	4	2	-	2
Brazil	12	8	6	25	10	21	16	43	31	48	59
Chile	13	6	3	11	9	10	14	12	15	20	12
Colombia	31	10	7	17	10	13	18	27	38	29	25
Ecuador	-	1	1	-	1	-	1	1	1	4	4
Falkland Islands	-	-	1	-	-	-	-	-	-	1	1
Guyana	3	5	-	-	1	-	-	1	4	-	2
Paraguay	-	-	-	2	-	-	-	2	-	-	3
Peru	10	8	5	1	5	14	13	10	12	18	31
Suriname	-	1	-	-	-	-	-	1	-	-	-
Uruguay	6	-	1	-	1	-	4	8	5	3	2
Venezuela	4	12	9	2	7	8	4	4	19	19	22
<i>Total</i>	<i>84</i>	<i>61</i>	<i>37</i>	<i>68</i>	<i>56</i>	<i>77</i>	<i>88</i>	<i>142</i>	<i>154</i>	<i>172</i>	<i>187</i>
<i>Central America</i>											
Belize	-	-	-	-	-	-	-	-	1	-	-
Costa Rica	4	1	3	-	-	-	-	-	-	-	2
El Salvador	49	35	8	5	5	5	5	3	1	7	3
Guatemala	1	1	-	1	-	1	2	-	1	1	-
Honduras	1	1	-	-	-	-	3	-	-	-	-
Mexico	3	3	7	11	6	9	5	10	7	19	10
Nicaragua	2	-	-	-	-	-	-	-	-	-	2
Panama	-	-	-	3	-	2	1	-	1	1	1
Central America nfd	-	1	1	-	-	-	-	-	-	-	-
<i>Total</i>	<i>60</i>	<i>42</i>	<i>19</i>	<i>20</i>	<i>11</i>	<i>17</i>	<i>16</i>	<i>13</i>	<i>11</i>	<i>28</i>	<i>18</i>
<i>The Caribbean</i>											
Antigua And Barbuda	-	-	-	-	-	-	-	-	-	-	1
Aruba	-	-	1	-	-	-	-	-	-	-	-
Bahamas	-	-	-	1	-	1	-	1	2	1	-
Barbados	-	2	3	2	1	6	-	1	2	-	3
Cayman Islands	1	-	-	1	-	-	1	-	1	1	1
Cuba	1	2	-	1	-	2	3	-	-	4	2
Dominica	-	-	-	-	-	-	-	-	-	2	-
Dominican Republic	-	-	-	-	-	3	1	2	1	4	1
Grenada	3	-	-	-	-	-	-	1	1	1	1
Haiti	-	-	-	-	-	-	-	-	1	-	-
Jamaica	2	-	3	3	3	2	1	2	5	7	3
Martinique	-	-	-	-	1	-	-	-	-	-	-
Netherlands Antilles	-	-	-	-	-	-	1	-	-	-	-
Puerto Rico	-	-	-	2	-	1	-	1	-	-	1
St Lucia	-	-	-	-	-	-	-	-	-	1	-
Trinidad & Tobago	4	4	7	1	4	3	3	1	6	3	2
Virgin Islands British	-	-	-	-	-	-	-	-	-	1	-
Caribbean nfd	-	2	-	-	-	-	-	-	-	1	-
<i>Total</i>	<i>11</i>	<i>10</i>	<i>14</i>	<i>11</i>	<i>9</i>	<i>18</i>	<i>10</i>	<i>9</i>	<i>19</i>	<i>26</i>	<i>15</i>
TOTAL SOUTH AMERICA, CENTRAL AMERICA & THE CARIBBEAN	155	113	70	99	76	112	114	164	184	226	220

QUEENSLAND

Table 4.1(CONTD) **SETTLER ARRIVALS BY BIRTHPLACE, 1992-93 TO 2002-02**

BIRTHPLACE	1995-96	1996-97	1997-98	1998-99	1999-00	2000-01	2001-02	2002-03	2003-04	2004-05	2005-06
SUB-SAHARAN AFRICA											
<i>Central & West Africa</i>											
Benin	-	3	1	-	-	-	-	-	-	1	1
Cameroon	-	-	-	-	-	-	-	1	-	-	2
Chad	-	-	-	-	-	-	-	-	-	-	1
Congo	-	-	-	2	-	-	-	11	1	29	8
Congo Democratic Republic	3	1	-	-	-	1	4	1	-	3	17
Cote D'Ivoire	-	-	-	-	-	-	-	1	-	11	3
Gabon	-	-	-	-	-	1	1	-	-	-	-
Gambia	-	-	-	-	-	-	-	-	-	2	1
Ghana	2	2	2	2	5	13	6	3	8	2	15
Guinea	-	-	-	1	1	-	-	6	1	24	18
Liberia	-	-	-	1	-	-	6	12	21	110	76
Niger	6	1	-	-	-	-	-	-	-	-	4
Nigeria	3	6	5	4	11	16	13	9	19	6	23
Senegal	-	-	-	-	1	-	-	-	-	-	1
Sierra Leone	1	-	-	1	6	4	33	10	13	107	44
Togo	1	-	-	-	-	-	-	-	-	7	1
<i>Total</i>	<i>16</i>	<i>13</i>	<i>8</i>	<i>11</i>	<i>24</i>	<i>35</i>	<i>63</i>	<i>54</i>	<i>63</i>	<i>302</i>	<i>215</i>
<i>Southern & East Africa</i>											
Angola	-	-	1	-	-	1	1	2	1	1	-
Botswana	7	1	9	-	2	3	2	6	4	5	9
Burundi	-	1	-	-	-	3	-	-	15	55	101
Djibouti	-	-	-	-	-	2	1	1	-	-	-
Eritrea (h)	13	4	5	8	11	7	18	7	7	7	41
Ethiopia (h)	26	23	20	30	23	35	45	36	53	60	54
Kenya	15	7	23	14	13	25	51	66	78	114	82
Lesotho	-	-	-	-	-	-	1	1	-	-	1
Madagascar	1	-	-	1	2	2	2	-	1	-	1
Malawi	1	2	-	2	-	2	16	12	12	7	-
Mauritius	6	6	1	5	2	3	4	6	7	20	26

(h) As reliable data are not available for component countries prior to 1995-96, care should be taken when interpreting the data.

QUEENSLAND

Table 4.1(CONTD) **SETTLER ARRIVALS BY BIRTHPLACE, 1995-96 TO 2005-06**

BIRTHPLACE	1995-96	1996-97	1997-98	1998-99	1999-00	2000-01	2001-02	2002-03	2003-04	2004-05	2005-06
<i>Southern & East Africa</i> (continued)											
Mozambique	-	-	-	7	1	5	6	4	8	6	3
Namibia	5	-	1	6	1	6	6	11	5	8	9
Reunion	-	-	-	-	5	-	-	-	1	-	-
Rwanda	2	-	-	1	-	-	2	-	22	5	24
St Helena	-	-	-	-	-	-	-	-	-	1	-
Seychelles	4	2	-	1	-	-	6	2	2	4	-
Somalia	13	7	48	52	3	14	7	12	11	18	53
South Africa	408	439	581	806	901	1,097	1,212	1,064	1,304	1,048	995
Swaziland	1	-	2	2	-	1	1	1	1	2	3
Tanzania	9	4	5	2	1	2	3	5	14	29	85
Uganda	2	7	4	-	3	3	7	10	21	23	43
Zambia	10	19	14	11	15	22	27	19	27	30	22
Zimbabwe	63	37	57	54	126	223	367	346	416	308	214
Southern & East Africa nfd	-	-	-	-	1	-	-	-	-	-	-
<i>Total</i>	586	559	771	1,002	1,110	1,456	1,785	1,611	2,010	1,751	1,766
TOTAL											
SUB-SAHARAN AFRICA	602	572	779	1,013	1,134	1,491	1,848	1,665	2,073	2,053	1,981
SUPPLEMENTARY CODES (i)											
Fmr Ussr & Baltic States nfd	64	41	42	63	80	102	94	100	109	108	118
TOTAL											
SUPPLEMENTARY CODES	64	41	42	63	80	102	94	100	109	108	118
NOT STATED	6	3	2	4	13	6	-	7	15	1	21
TOTAL ALL COUNTRIES	15,284	14,640	15,095	16,028	17,286	19,535	15,825	16,182	20,284	22,660	24,862

(i) Supplementary codes cannot be classified to any major region in the Standard Australian Classification of Countries (SACC). This may lead to under reporting of their component countries in the rest of the table, care should be taken when interpreting the data.

SOUTH AUSTRALIA

Table 5.1 SETTLER ARRIVALS BY BIRTHPLACE, 1995-96 TO 2005-06

BIRTHPLACE	1995-96	1996-97	1997-98	1998-99	1999-00	2000-01	2001-02	2002-03	2003-04	2004-05	2005-06
OCEANIA											
<i>Australia & External Territories (a)</i>	15	17	6	6	9	11	11	12	6	15	16
<i>New Zealand</i>	244	289	296	327	341	482	339	232	266	327	373
<i>Melanesia</i>											
Papua New Guinea	6	2	2	4	-	1	1	1	6	1	3
Solomon Islands	-	-	3	-	3	-	-	-	-	1	-
Vanuatu	-	1	-	-	-	-	-	4	-	-	-
<i>Total</i>	6	3	5	4	3	1	1	5	6	2	3
<i>Micronesia</i>											
Palau	-	-	1	-	-	-	-	-	-	-	-
<i>Total</i>	-	-	1	-	-	-	-	-	-	-	-
<i>Polynesia (excluding Hawaii)</i>											
Cook Islands	3	2	5	3	2	1	-	2	-	-	1
Fiji	25	14	11	16	20	16	29	22	26	28	28
Niue	-	-	-	2	1	-	-	-	-	-	-
Samoa	-	2	7	2	3	4	4	2	2	8	3
Samoa American	-	-	-	-	-	1	1	-	-	-	-
Tonga	1	-	1	1	4	2	5	1	-	2	3
Polynesia (Excludes Hawaii) nfr	-	-	-	1	-	-	-	-	-	-	-
<i>Total</i>	29	18	24	25	30	24	39	27	28	38	35
TOTAL OCEANIA	294	327	332	362	383	518	390	276	306	382	427
EUROPE											
<i>United Kingdom & Ireland</i>											
U.K.	794	660	671	681	665	495	572	785	1,269	1,725	3,009
Ireland	31	22	33	26	19	12	16	18	36	44	64
<i>Total</i>	825	682	704	707	684	507	588	803	1,305	1,769	3,073
<i>Western Europe</i>											
Austria	5	9	5	-	7	4	4	7	2	7	8
Belgium	4	1	1	1	4	5	1	8	2	4	4
France	24	14	13	5	11	16	16	24	17	23	18
Germany	64	52	41	52	50	35	48	28	48	58	76
Luxembourg	-	-	-	-	-	1	-	-	-	-	-
Monaco	-	-	-	-	-	-	1	-	-	-	-
Netherlands	19	11	16	18	36	20	19	22	21	34	34
Switzerland	10	5	14	6	13	5	10	10	7	11	14
<i>Total</i>	126	92	90	82	121	86	99	99	97	137	154

(a) The Australia component consists of persons born in Australia who have settled overseas and returned.

SOUTH AUSTRALIA**Table 5.1 (CONTD) SETTLER ARRIVALS BY BIRTHPLACE, 1995-96 TO 2005-06**

BIRTHPLACE	1995-96	1996-97	1997-98	1998-99	1999-00	2000-01	2001-02	2002-03	2003-04	2004-05	2005-06
<i>Northern Europe</i>											
Denmark	8	10	5	2	2	11	11	4	-	9	5
Finland	1	2	4	-	1	-	1	3	2	-	3
Norway	5	-	4	-	1	2	1	2	7	7	4
Sweden	6	6	6	4	5	7	5	10	10	6	16
<i>Total</i>	<i>20</i>	<i>18</i>	<i>19</i>	<i>6</i>	<i>9</i>	<i>20</i>	<i>18</i>	<i>19</i>	<i>19</i>	<i>22</i>	<i>28</i>
<i>Southern Europe</i>											
Gibraltar	1	-	-	1	-	-	-	-	-	-	-
Italy	17	14	15	13	10	9	10	3	8	26	11
Malta	1	3	-	-	1	1	2	1	2	-	5
Portugal	14	-	-	4	-	1	1	1	2	2	-
Spain	3	7	7	1	4	4	5	6	4	2	3
<i>Total</i>	<i>36</i>	<i>24</i>	<i>22</i>	<i>19</i>	<i>15</i>	<i>15</i>	<i>18</i>	<i>11</i>	<i>16</i>	<i>30</i>	<i>19</i>
<i>South Eastern Europe</i>											
Albania	7	11	1	10	4	5	14	20	9	12	7
Bosnia & Herzegovina (b)	331	179	187	160	65	81	38	14	16	5	7
Bulgaria	14	12	1	9	6	12	5	7	13	4	5
Croatia (b)	26	38	65	102	85	117	58	16	5	8	2
Cyprus	3	5	5	3	-	4	2	1	4	6	1
Fmr. Yugo. Rep. of Macedonia	2	2	4	12	4	6	5	3	-	-	2
Greece	12	12	16	3	8	1	10	6	4	7	10
Moldava	-	2	-	-	-	-	-	-	15	1	5
Romania	36	75	16	48	22	20	25	19	27	20	14
Serbia & Montenegro (b)	-	-	-	246	189	163	198	161	62	34	40
Slovenia (b)	3	3	5	-	1	-	2	-	-	-	-
Former Yugoslavia nfd (b)	209	145	105	-	-	-	-	-	-	-	-
<i>Total</i>	<i>643</i>	<i>484</i>	<i>405</i>	<i>593</i>	<i>384</i>	<i>409</i>	<i>357</i>	<i>247</i>	<i>155</i>	<i>97</i>	<i>93</i>
<i>Eastern Europe</i>											
Belarus (c)	1	-	1	-	1	-	-	-	-	2	2
Czech Republic (d)	5	2	2	-	3	-	2	-	-	-	5
Estonia	-	1	-	-	2	-	-	5	2	-	1
Former Czechoslovakia (d)	-	2	-	7	5	4	6	9	13	9	7
Hungary	9	10	6	3	6	5	5	2	7	10	4
Latvia (c)	-	4	1	-	5	2	4	2	4	2	3
Lithuania (c)	-	1	-	-	1	-	2	2	-	6	1
Poland	133	68	27	28	24	8	31	33	27	45	32
Russian Federation (c)	1	13	12	5	5	1	6	4	24	24	40
Slovakia (d)	2	2	3	2	-	-	2	1	2	1	1
Ukraine	19	45	37	8	9	8	9	9	17	14	18
<i>Total</i>	<i>170</i>	<i>148</i>	<i>89</i>	<i>53</i>	<i>61</i>	<i>28</i>	<i>67</i>	<i>67</i>	<i>96</i>	<i>113</i>	<i>114</i>
TOTAL EUROPE	1,820	1,448	1,329	1,460	1,274	1,065	1,147	1,246	1,688	2,168	3,481

(b) As reliable data are not available for component countries prior to 1995-96, care should be taken when interpreting the data. Serbia and Montenegro was previously called the Federal Republic of Yugoslavia and since 1998-99 contains the Former Yugoslavia nfd.

(c) As reliable data are not available for component countries prior to 1995-96, care should be taken when interpreting the data.

(d) As reliable data are not available for component countries prior to 1995-96, care should be taken when interpreting the data.

SOUTH AUSTRALIA**Table 5.1 (CONTD) SETTLER ARRIVALS BY BIRTHPLACE, 1995-96 TO 2005-06**

BIRTHPLACE	1995-96	1996-97	1997-98	1998-99	1999-00	2000-01	2001-02	2002-03	2003-04	2004-05	2005-06
NORTH AFRICA & THE MIDDLE EAST											
<i>North Africa</i>											
Algeria	-	1	-	-	-	11	2	5	-	1	-
Egypt	9	18	11	8	8	6	7	29	19	24	37
Libya	2	-	-	-	-	-	-	-	3	-	-
Morocco	3	-	2	2	-	-	-	2	3	3	1
Sudan	8	6	27	20	52	74	89	188	363	407	248
Tunisia	-	-	-	-	1	-	-	2	-	-	-
<i>Total</i>	22	25	40	30	61	91	98	226	388	435	286
<i>The Middle East</i>											
Bahrain	-	1	-	-	-	-	-	1	-	2	2
Gaza Strip & West Bank	-	-	-	-	-	-	1	-	-	-	-
Iran	114	108	65	47	54	119	53	71	70	69	70
Iraq	37	58	35	79	47	44	51	115	63	46	64
Israel	5	3	3	5	1	-	3	7	3	13	7
Jordan	4	6	6	1	1	9	1	5	4	9	8
Kuwait	1	1	2	1	-	2	-	3	-	2	2
Lebanon	12	27	25	10	21	22	20	29	31	24	41
Oman	-	-	-	-	-	-	1	1	-	-	4
Qatar	1	-	-	-	1	-	-	-	-	-	-
Saudi Arabia	1	11	5	-	4	1	1	1	-	2	4
Syria	1	4	7	3	6	6	11	10	8	6	7
Turkey	11	15	15	7	16	4	19	12	16	20	14
United Arab Emirates	3	1	1	-	1	-	9	7	3	11	8
Yemen	-	-	-	1	-	4	-	3	2	-	-
Middle East nfd	-	-	-	-	-	-	-	1	-	-	2
<i>Total</i>	190	235	164	154	152	211	170	266	200	204	233
TOTAL NORTH AFRICA & THE MIDDLE EAST	212	260	204	184	213	302	268	492	588	639	519
SOUTHEAST ASIA											
Brunei	3	2	1	1	-	1	1	1	4	-	3
Burma (Myanmar)	2	3	-	1	1	1	1	12	3	5	11
Cambodia	150	64	32	29	27	25	28	49	31	61	52
Indonesia	17	17	27	35	36	37	65	53	47	29	64
Laos	2	-	-	2	-	-	1	-	-	4	6
Malaysia	54	35	45	62	60	80	58	91	132	112	154
Philippines	98	136	131	147	121	123	126	134	147	161	285
Singapore	20	34	18	12	34	26	61	68	63	94	129
Thailand	40	29	15	29	20	35	49	50	57	50	62
Viet Nam	244	160	91	101	89	71	102	130	110	97	155
TOTAL SOUTHEAST ASIA	630	480	360	419	388	399	492	588	594	613	921

SOUTH AUSTRALIA**Table 5.1 (CONTD) SETTLER ARRIVALS BY BIRTHPLACE, 1995-96 TO 2005-06**

BIRTHPLACE	1995-96	1996-97	1997-98	1998-99	1999-00	2000-01	2001-02	2002-03	2003-04	2004-05	2005-06
NORTHEAST ASIA											
China (f)	181	127	109	107	96	123	134	113	208	513	879
Hong Kong (g)	91	107	55	32	17	28	10	18	31	48	44
Japan	14	9	8	13	15	31	11	29	32	40	40
Korea	20	19	18	18	25	40	25	34	35	103	163
Macau (g)	-	7	-	-	1	-	-	2	1	-	2
Taiwan	8	22	15	12	23	22	18	16	18	31	30
TOTAL NORTHEAST ASIA	314	291	205	182	177	244	198	212	325	735	1,158
SOUTHERN ASIA											
Bangladesh	27	4	2	6	-	18	3	1	10	17	16
India	160	100	154	87	152	126	118	138	243	404	909
Maldives	-	-	-	-	-	-	3	-	-	1	-
Nepal	4	1	2	1	1	2	5	4	5	5	10
Pakistan	7	8	6	62	29	36	22	12	53	46	55
Sri Lanka	27	25	13	16	17	44	35	23	28	45	85
TOTAL SOUTHERN ASIA	225	138	177	172	199	226	186	178	339	518	1,075
CENTRAL ASIA											
Afghanistan	6	2	13	24	2	3	36	57	98	100	373
Armenia (d)	1	2	5	-	-	-	-	5	4	-	-
Azerbaijan (d)	-	-	-	-	-	-	-	-	3	-	-
Georgia (d)	5	1	2	-	1	1	-	-	-	-	-
Kazakhstan (d)	11	5	5	6	3	1	4	1	2	11	-
Kyrgyz Republic (d)	1	-	2	-	-	-	-	-	3	-	4
Tajikistan (d)	-	-	-	-	-	-	-	-	-	-	1
Uzbekistan (d)	-	3	6	-	-	8	3	-	3	6	41
TOTAL CENTRAL ASIA	24	13	33	30	6	13	43	63	113	117	419
NORTHERN AMERICA											
Bermuda	-	-	-	-	-	-	-	-	-	1	-
Canada	30	50	40	42	30	42	22	46	38	24	18
U.S.A.	72	82	57	40	52	57	50	78	97	68	95
TOTAL NORTHERN AMERICA	102	132	97	82	82	99	72	124	135	93	113

(d) As reliable data are not available for component countries prior to 1995-96, care should be taken when interpreting the data.

(f) Excluding SARs and Taiwan.

(g) SAR of China.

SOUTH AUSTRALIA**Table 5.1 (CONTD) SETTLER ARRIVALS BY BIRTHPLACE, 1995-96 TO 2005-06**

BIRTHPLACE	1995-96	1996-97	1997-98	1998-99	1999-00	2000-01	2001-02	2002-03	2003-04	2004-05	2005-06
SOUTH AMERICA, CENTRAL AMERICA & THE CARIBBEAN											
<i>South America</i>											
Argentina	5	-	3	3	2	4	8	8	14	33	15
Bolivia	-	-	2	-	-	1	-	-	-	1	2
Brazil	3	2	6	2	-	3	4	9	9	12	27
Chile	6	2	1	6	3	1	12	2	3	7	6
Colombia	1	1	3	1	1	4	1	4	7	1	11
Ecuador	2	2	-	-	2	-	2	2	-	4	1
Guyana	-	1	-	-	-	1	-	1	1	-	1
Paraguay	-	-	-	-	-	-	-	-	1	-	-
Peru	2	4	2	1	2	2	2	5	8	9	20
Suriname	-	-	-	-	-	-	-	1	-	-	1
Uruguay	2	-	-	-	-	-	-	1	-	1	-
Venezuela	2	-	-	5	1	2	-	1	2	9	13
<i>Total</i>	<i>23</i>	<i>12</i>	<i>17</i>	<i>18</i>	<i>11</i>	<i>18</i>	<i>29</i>	<i>34</i>	<i>45</i>	<i>77</i>	<i>97</i>
<i>Central America</i>											
Belize	-	-	2	-	-	-	-	-	-	-	-
Costa Rica	-	1	-	-	-	-	-	-	-	-	3
El Salvador	4	13	16	5	1	1	1	-	1	-	2
Guatemala	1	-	-	-	-	-	-	-	-	-	-
Honduras	-	-	-	2	-	-	-	-	-	-	1
Mexico	1	-	-	1	2	1	-	2	3	3	19
Nicaragua	-	1	-	-	-	-	-	-	-	-	-
Panama	-	-	-	-	4	-	-	-	-	-	1
<i>Total</i>	<i>6</i>	<i>15</i>	<i>18</i>	<i>8</i>	<i>7</i>	<i>2</i>	<i>1</i>	<i>2</i>	<i>4</i>	<i>3</i>	<i>26</i>
<i>The Caribbean</i>											
Bahamas	-	-	-	-	-	-	-	-	-	1	-
Barbados	-	1	-	-	-	-	-	-	-	-	-
Cayman Islands	-	-	-	-	-	1	-	-	-	-	-
Cuba	-	2	-	-	-	-	1	3	1	-	-
Dominican Republic	-	-	1	1	-	1	-	-	-	-	-
Jamaica	-	-	-	1	2	2	-	1	-	1	1
Montserrat	-	-	-	-	-	-	-	-	-	-	1
Netherlands Antilles	-	-	-	-	-	-	-	1	-	-	-
St Kitts & Nevis	-	-	-	-	-	-	-	1	-	-	-
St Lucia	1	-	1	1	-	-	-	-	-	-	1
Trinidad & Tobago	-	-	-	-	-	1	-	-	-	-	3
<i>Total</i>	<i>1</i>	<i>3</i>	<i>2</i>	<i>3</i>	<i>2</i>	<i>5</i>	<i>1</i>	<i>6</i>	<i>1</i>	<i>2</i>	<i>6</i>
TOTAL SOUTH AMERICA, CENTRAL AMERICA & THE CARIBBEAN											
	30	30	37	29	20	25	31	42	50	82	129

SOUTH AUSTRALIA**Table 5.1 (CONTD) SETTLER ARRIVALS BY BIRTHPLACE, 1995-96 TO 2005-06**

BIRTHPLACE	1995-96	1996-97	1997-98	1998-99	1999-00	2000-01	2001-02	2002-03	2003-04	2004-05	2005-06
SUB-SAHARAN AFRICA											
<i>Central & West Africa</i>											
Cameroon	-	-	-	-	-	-	-	-	1	1	-
Central African Republic	-	-	-	-	-	-	-	-	-	1	-
Congo	-	-	-	-	-	1	1	1	11	86	6
Congo Democratic Republic	-	-	-	-	-	-	-	-	1	-	15
Cote D'Ivoire	-	-	-	-	1	1	-	-	-	13	11
Gambia	-	-	-	2	-	-	-	-	-	-	-
Ghana	-	-	-	4	-	1	2	1	1	19	18
Guinea	-	-	-	-	-	-	-	2	1	20	9
Liberia	-	-	-	-	-	1	13	45	20	144	75
Mali	-	-	-	-	1	-	-	-	-	-	-
Niger	-	-	-	1	1	-	-	-	1	-	-
Nigeria	2	1	-	1	1	1	11	3	5	5	15
Senegal	-	-	-	-	-	-	-	1	-	-	1
Sierra Leone	-	-	-	-	-	9	22	-	3	74	19
<i>Total</i>	<i>2</i>	<i>1</i>	<i>-</i>	<i>8</i>	<i>4</i>	<i>14</i>	<i>49</i>	<i>53</i>	<i>44</i>	<i>363</i>	<i>169</i>
<i>Southern & East Africa</i>											
Botswana	2	2	11	-	1	-	2	2	2	-	1
Burundi	-	-	-	-	-	-	-	-	8	46	82
Eritrea (h)	5	5	8	15	10	16	3	10	9	6	4
Ethiopia (h)	21	24	22	20	23	23	31	22	58	57	24
Kenya	1	7	1	22	24	9	31	21	57	89	79
Madagascar	-	-	-	-	-	1	-	-	-	-	1
Malawi	-	-	-	1	-	-	1	-	-	6	-
Mauritius	4	-	-	-	5	-	3	6	6	6	6
Mozambique	-	-	1	-	-	1	-	1	-	-	-
Namibia	-	-	-	2	-	1	-	7	-	5	5
Rwanda	-	1	-	-	-	-	-	-	1	7	3
Seychelles	-	-	-	2	-	-	-	-	-	-	1
Somalia	8	24	12	29	7	6	18	1	19	54	17
South Africa	62	66	184	213	189	153	241	209	317	253	263
Swaziland	-	-	-	-	1	-	-	-	2	-	-
Tanzania	-	-	2	3	1	-	-	-	5	25	64
Uganda	1	-	1	-	-	-	9	12	7	12	14
Zambia	2	1	6	4	2	2	1	2	8	5	10
Zimbabwe	9	8	10	9	22	8	29	24	39	37	53
<i>Total</i>	<i>115</i>	<i>138</i>	<i>258</i>	<i>320</i>	<i>285</i>	<i>220</i>	<i>369</i>	<i>317</i>	<i>538</i>	<i>608</i>	<i>627</i>
TOTAL											
SUB-SAHARAN AFRICA	117	139	258	328	289	234	418	370	582	971	796
SUPPLEMENTARY CODES (i)											
Fmr Ussr & Baltic States nfd	73	74	37	72	73	58	71	65	53	44	61
TOTAL											
SUPPLEMENTARY CODES	73	74	37	72	73	58	71	65	53	44	61
NOT STATED	1	4	-	-	1	-	-	1	-	2	-
TOTAL ALL COUNTRIES	3,842	3,336	3,069	3,320	3,105	3,183	3,316	3,657	4,773	6,364	9,099

(h) As reliable data are not available for component countries prior to 1995-96, care should be taken when interpreting the data.

(i) Supplementary codes cannot be classified to any major region in the Standard Australian Classification of Countries (SACC). This may lead to under reporting of their component countries in the rest of the table, care should be taken when interpreting the data.

WESTERN AUSTRALIA

Table 6.1 SETTLER ARRIVALS BY BIRTHPLACE, 1995-96 TO 2005-06

BIRTHPLACE	1995-96	1996-97	1997-98	1998-99	1999-00	2000-01	2001-02	2002-03	2003-04	2004-05	2005-06
OCEANIA											
<i>Australia & External Territories (a)</i>	49	43	35	36	38	43	37	38	54	72	57
<i>New Zealand</i>	1,242	1,519	1,572	1,945	1,775	1,669	1,127	833	1,046	1,588	1,873
<i>Melanesia</i>											
New Caledonia	1	-	1	-	-	-	-	1	-	-	-
Papua New Guinea	5	1	5	2	-	-	1	2	1	1	3
Solomon Islands	1	1	1	1	-	2	-	-	-	1	2
Vanuatu	-	-	-	-	1	-	-	1	-	1	-
<i>Total</i>	7	2	7	3	1	2	1	4	1	3	5
<i>Micronesia</i>											
Guam	-	-	-	-	1	-	-	-	-	-	-
Kiribati	-	-	1	-	-	-	2	1	-	-	-
Nauru	-	-	-	-	-	3	-	-	-	1	-
Micronesia nfd	1	-	-	-	-	-	-	-	-	-	-
<i>Total</i>	1	-	1	-	1	3	2	1	-	1	-
<i>Polynesia (excluding Hawaii)</i>											
Cook Islands	-	4	3	3	1	-	1	-	3	-	1
Fiji	16	9	18	3	3	11	10	6	6	11	17
French Polynesia	-	-	-	1	1	-	-	1	-	-	2
Niue	1	1	1	4	1	1	-	-	2	-	2
Samoa	7	8	2	14	9	13	1	4	8	12	4
Samoa American	-	-	-	-	1	-	-	-	-	-	1
Tokelau	-	-	-	1	1	-	-	-	-	-	1
Tonga	1	5	-	1	4	2	1	5	3	2	3
Tuvalu	-	-	-	-	-	-	2	-	-	-	-
<i>Total</i>	25	27	24	27	21	27	15	16	22	25	31
TOTAL OCEANIA	1,324	1,591	1,639	2,011	1,836	1,744	1,182	892	1,123	1,689	1,966
EUROPE											
<i>United Kingdom & Ireland</i>											
U.K.	2,779	2,589	2,343	2,218	2,262	2,147	2,112	3,319	5,120	5,106	6,717
Ireland	153	159	122	120	130	138	92	106	174	159	218
<i>Total</i>	2,932	2,748	2,465	2,338	2,392	2,285	2,204	3,425	5,294	5,265	6,935
<i>Western Europe</i>											
Austria	11	11	7	19	26	9	11	11	17	17	10
Belgium	12	16	11	7	9	7	6	25	8	21	10
France	34	47	24	23	14	18	29	34	34	40	45
Germany	101	94	92	87	117	110	62	101	114	120	127
Liechtenstein	-	-	-	-	-	-	2	-	-	-	-
Luxembourg	1	-	-	1	-	-	-	-	-	-	1
Monaco	-	-	-	-	-	-	-	-	-	-	1
Netherlands	62	74	57	68	57	63	80	39	73	93	73
Switzerland	57	68	28	38	40	32	31	47	34	39	47
<i>Total</i>	278	310	219	243	263	239	221	257	280	330	314

(a) The Australia component consists of persons born in Australia who have settled overseas and returned.

WESTERN AUSTRALIA

TABLE 6.1 (CONTD) SETTLER ARRIVALS BY BIRTHPLACE, 1995-96 TO 2005-06

BIRTHPLACE	1995-96	1996-97	1997-98	1998-99	1999-00	2000-01	2001-02	2002-03	2003-04	2004-05	2005-06
<i>Northern Europe</i>											
Denmark	27	14	12	9	8	11	18	11	14	7	15
Faeroe Islands	-	-	-	-	-	-	-	1	-	-	-
Finland	8	3	3	1	2	4	5	4	3	5	3
Greenland	-	-	-	-	-	-	-	-	-	-	1
Iceland	5	-	-	-	-	-	-	-	-	1	-
Norway	13	6	2	4	4	4	1	10	11	3	7
Sweden	19	31	13	13	17	8	13	15	34	22	13
<i>Total</i>	<i>72</i>	<i>54</i>	<i>30</i>	<i>27</i>	<i>31</i>	<i>27</i>	<i>37</i>	<i>41</i>	<i>62</i>	<i>38</i>	<i>39</i>
<i>Southern Europe</i>											
Gibraltar	-	2	-	4	1	1	-	-	-	1	1
Italy	52	40	23	29	23	33	48	20	35	36	34
Malta	1	1	3	1	-	4	-	4	8	7	3
Portugal	37	21	2	4	13	4	10	9	14	16	9
Spain	12	5	3	6	6	7	5	8	10	21	14
<i>Total</i>	<i>102</i>	<i>69</i>	<i>31</i>	<i>44</i>	<i>43</i>	<i>49</i>	<i>63</i>	<i>41</i>	<i>67</i>	<i>81</i>	<i>61</i>
<i>South Eastern Europe</i>											
Albania	-	-	12	2	-	7	3	2	7	6	17
Bosnia & Herzegovina (b)	468	263	245	191	98	91	39	11	13	11	11
Bulgaria	10	12	11	11	7	15	19	8	12	7	8
Croatia (b)	99	59	153	208	166	191	76	62	27	10	5
Cyprus	2	4	5	3	3	1	1	3	4	6	8
Fmr. Yugo. Rep. of Macedonia	43	57	35	41	35	69	41	39	34	27	34
Greece	9	15	12	6	7	3	6	6	4	7	3
Moldava	-	3	-	-	-	-	-	2	-	-	-
Romania	45	36	21	28	48	29	19	32	40	32	22
Serbia & Montenegro (b)	-	-	-	338	289	233	197	204	91	59	67
Slovenia (b)	2	2	3	2	1	2	1	1	1	1	1
Former Yugoslavia nfd (b)	289	203	147	-	-	-	-	-	-	-	-
<i>Total</i>	<i>967</i>	<i>654</i>	<i>644</i>	<i>830</i>	<i>654</i>	<i>641</i>	<i>402</i>	<i>370</i>	<i>233</i>	<i>166</i>	<i>176</i>
<i>Eastern Europe</i>											
Belarus (c)	-	-	-	-	3	1	-	-	2	1	-
Czech Republic (d)	7	6	5	5	1	-	2	1	-	5	5
Estonia (c)	2	3	1	-	1	1	-	-	-	3	1
Former Czechoslovakia (d)	3	3	9	14	8	15	7	7	9	15	14
Hungary	16	7	6	3	5	5	5	6	9	6	10
Latvia (c)	3	-	-	-	-	-	-	2	1	3	1
Lithuania (c)	1	-	2	-	2	-	-	1	1	3	4
Poland	77	83	34	42	34	27	27	32	35	36	33
Russian Federation (c)	2	17	15	-	10	8	-	7	16	17	34
Slovakia (d)	4	2	1	1	2	-	-	1	2	-	3
Ukraine	10	10	17	7	2	9	6	9	3	13	15
<i>Total</i>	<i>125</i>	<i>131</i>	<i>90</i>	<i>72</i>	<i>68</i>	<i>66</i>	<i>47</i>	<i>66</i>	<i>78</i>	<i>102</i>	<i>120</i>
TOTAL EUROPE	4,476	3,966	3,479	3,554	3,451	3,307	2,974	4,200	6,014	5,982	7,645

(b) As reliable data are not available for component countries prior to 1995-96, care should be taken when interpreting the data. Serbia and Montenegro was previously called the Federal Republic of Yugoslavia and since 1998-99 contains the Former Yugoslavia nfd.

(c) As reliable data are not available for component countries prior to 1995-96, care should be taken when interpreting the data.

(d) As reliable data are not available for component countries prior to 1995-96, care should be taken when interpreting the data.

WESTERN AUSTRALIA**TABLE 6.1 (CONTD) SETTLER ARRIVALS BY BIRTHPLACE, 1995-96 TO 2005-06**

BIRTHPLACE	1995-96	1996-97	1997-98	1998-99	1999-00	2000-01	2001-02	2002-03	2003-04	2004-05	2005-06
NORTH AFRICA & THE MIDDLE EAST											
<i>North Africa</i>											
Algeria	4	1	5	3	2	7	5	2	2	-	2
Egypt	12	27	18	10	20	29	18	30	44	69	50
Libya	1	-	1	3	-	2	-	3	-	2	2
Morocco	6	3	-	-	6	3	-	3	5	3	2
Sudan	33	27	33	31	52	195	144	239	500	789	441
Tunisia	1	1	-	2	-	-	-	2	1	-	3
<i>Total</i>	<i>57</i>	<i>59</i>	<i>57</i>	<i>49</i>	<i>80</i>	<i>236</i>	<i>167</i>	<i>279</i>	<i>552</i>	<i>863</i>	<i>500</i>
<i>The Middle East</i>											
Bahrain	-	4	4	2	-	1	8	-	1	5	3
Gaza Strip & West Bank	-	-	1	-	-	-	-	-	-	1	-
Iran	130	116	71	46	70	108	31	103	124	120	91
Iraq	241	185	82	38	97	94	90	255	97	59	89
Israel	12	12	14	16	9	14	10	17	20	24	24
Jordan	15	17	9	15	18	16	3	10	7	6	11
Kuwait	16	12	10	2	30	10	4	43	14	14	18
Lebanon	23	20	11	12	18	10	18	27	24	30	20
Oman	3	5	-	3	3	1	7	3	1	1	5
Qatar	1	-	1	3	4	1	7	1	3	1	-
Saudi Arabia	10	16	13	2	5	8	1	3	5	7	9
Syria	7	5	3	4	4	10	1	10	13	6	4
Turkey	26	42	24	16	12	18	49	44	27	28	21
United Arab Emirates	6	11	8	12	11	6	12	18	25	17	30
Yemen	-	-	1	2	-	1	1	-	-	-	-
Middle East nfd	-	-	-	-	1	2	3	-	-	2	3
<i>Total</i>	<i>490</i>	<i>445</i>	<i>252</i>	<i>173</i>	<i>282</i>	<i>300</i>	<i>245</i>	<i>534</i>	<i>361</i>	<i>321</i>	<i>328</i>
TOTAL NORTH AFRICA & THE MIDDLE EAST	547	504	309	222	362	536	412	813	913	1,184	828
SOUTHEAST ASIA											
Brunei	9	29	7	15	18	28	27	26	28	27	19
Burma (Myanmar)	240	92	38	22	47	44	55	40	43	75	167
Cambodia	26	16	11	4	8	10	12	19	23	21	27
East Timor (e)	-	-	-	-	-	-	1	2	1	6	7
Indonesia (e)	570	646	731	828	890	1,095	1,132	705	534	384	300
Laos	-	7	5	2	1	1	-	2	-	8	6
Malaysia	251	252	219	316	487	473	473	825	903	756	751
Philippines	186	207	174	196	147	127	164	156	228	246	240
Singapore	361	357	264	242	355	419	553	605	697	1,076	936
Thailand	110	71	37	63	73	82	175	167	154	185	211
Viet Nam	225	168	137	112	113	105	136	174	166	147	173
TOTAL SOUTHEAST ASIA	1,978	1,845	1,623	1,800	2,139	2,384	2,728	2,721	2,777	2,931	2,837

(e) East Timor previously recorded under Indonesia, care should be taken when interpreting the data.

WESTERN AUSTRALIA**TABLE 6.1 (CONTD) SETTLER ARRIVALS BY BIRTHPLACE, 1995-96 TO 2005-06**

BIRTHPLACE	1995-96	1996-97	1997-98	1998-99	1999-00	2000-01	2001-02	2002-03	2003-04	2004-05	2005-06
NORTHEAST ASIA											
China (f)	367	243	153	201	217	239	231	224	319	362	423
Hong Kong (g)	164	150	100	63	96	74	62	69	78	90	66
Japan	65	63	44	55	42	56	52	65	80	83	70
Korea	21	16	16	12	36	57	42	30	45	58	70
Macau (g)	6	8	2	5	1	3	2	4	3	2	1
Mongolia	-	-	-	-	-	1	-	-	1	-	4
Taiwan	40	49	35	29	32	52	48	35	26	25	29
TOTAL NORTHEAST ASIA	663	529	350	365	424	482	437	427	552	620	663
SOUTHERN ASIA											
Bangladesh	13	2	5	13	15	22	13	13	14	20	33
Bhutan	-	-	-	4	-	-	-	-	-	-	1
India	336	216	234	208	309	328	298	390	401	567	558
Maldives	-	-	-	4	-	-	-	-	6	4	3
Nepal	3	5	6	-	6	8	6	3	10	7	9
Pakistan	35	33	19	24	62	45	28	58	65	61	51
Sri Lanka	107	84	53	37	68	97	83	94	97	149	129
TOTAL SOUTHERN ASIA	494	340	317	290	460	500	428	558	593	808	784
CENTRAL ASIA											
Afghanistan	26	15	52	70	51	34	62	136	140	130	205
Armenia (d)	-	-	-	-	-	-	-	8	-	-	-
Azerbaijan (d)	1	-	-	-	-	-	-	-	-	4	7
Georgia (d)	-	-	-	-	1	-	-	-	-	-	-
Kazakhstan (d)	2	1	5	-	3	7	2	2	7	4	1
Kyrgyz Republic (d)	-	1	-	-	-	1	-	1	8	12	1
Tajikistan (d)	-	-	1	-	-	-	-	-	-	1	-
Turkmenistan (d)	-	-	-	-	-	1	-	-	-	-	-
Uzbekistan (d)	-	-	-	-	-	-	2	-	1	2	-
TOTAL CENTRAL ASIA	29	17	58	70	55	43	66	147	156	153	214
NORTHERN AMERICA											
Bermuda	3	3	1	-	4	-	-	-	-	-	-
Canada	134	121	115	67	84	97	97	73	74	101	109
U.S.A.	160	164	134	98	119	97	115	125	136	160	147
TOTAL NORTHERN AMERICA	297	288	250	165	207	194	212	198	210	261	256

(d) As reliable data are not available for component countries prior to 1995-96, care should be taken when interpreting the data.

(f) Excluding SARs and Taiwan.

(g) SAR of China.

WESTERN AUSTRALIA**TABLE 6.1 (CONTD) SETTLER ARRIVALS BY BIRTHPLACE, 1995-96 TO 2005-06**

BIRTHPLACE	1995-96	1996-97	1997-98	1998-99	1999-00	2000-01	2001-02	2002-03	2003-04	2004-05	2005-06
SOUTH AMERICA, CENTRAL AMERICA & THE CARIBBEAN											
<i>South America</i>											
Argentina	2	2	2	2	7	4	2	12	14	8	7
Bolivia	-	2	-	-	-	-	-	2	-	3	2
Brazil	5	7	6	5	15	7	17	9	12	27	24
Chile	17	7	10	6	16	5	6	11	11	7	6
Colombia	2	5	6	4	3	1	6	13	6	11	11
Ecuador	6	-	-	-	-	-	-	-	1	-	1
Falkland Islands	-	1	-	-	-	-	-	-	-	-	-
Guyana	-	2	-	2	3	6	-	3	-	-	5
Paraguay	-	-	-	2	1	-	-	-	1	1	-
Peru	4	3	2	2	1	4	3	3	6	9	13
Uruguay	-	-	-	-	-	-	-	1	6	1	1
Venezuela	3	3	5	1	4	1	2	4	7	1	13
<i>Total</i>	<i>39</i>	<i>32</i>	<i>31</i>	<i>24</i>	<i>50</i>	<i>28</i>	<i>36</i>	<i>58</i>	<i>64</i>	<i>68</i>	<i>83</i>
<i>Central America</i>											
Costa Rica	-	-	-	-	-	-	1	2	-	-	-
El Salvador	16	17	4	-	2	7	3	4	-	1	3
Guatemala	-	1	-	-	-	-	-	-	-	-	-
Mexico	3	1	4	-	6	2	2	3	2	6	3
Panama	1	-	1	-	-	-	-	-	1	-	-
<i>Total</i>	<i>20</i>	<i>19</i>	<i>9</i>	<i>-</i>	<i>8</i>	<i>9</i>	<i>6</i>	<i>9</i>	<i>3</i>	<i>7</i>	<i>6</i>
<i>The Caribbean</i>											
Bahamas	1	2	-	-	-	1	-	1	-	-	-
Barbados	1	-	1	-	-	-	-	2	-	1	-
Cayman Islands	-	-	-	-	-	-	1	-	-	1	-
Cuba	-	-	-	2	1	1	2	1	-	1	4
Dominican Republic	-	-	-	-	-	-	-	-	1	-	1
Grenada	-	-	-	-	1	-	-	-	-	-	1
Haiti	1	-	-	1	-	-	-	-	-	-	-
Jamaica	3	2	2	-	1	3	1	-	4	6	3
Netherlands Antilles	-	-	-	-	-	1	-	-	-	1	1
Puerto Rico	-	-	-	-	1	-	-	-	-	-	-
St Vincent & The Grenadines	-	1	-	-	-	-	-	-	-	-	-
Trinidad & Tobago	9	1	6	8	-	6	1	3	3	4	-
Caribbean nfd	1	-	-	-	-	-	-	-	-	-	-
<i>Total</i>	<i>16</i>	<i>6</i>	<i>9</i>	<i>11</i>	<i>4</i>	<i>12</i>	<i>5</i>	<i>7</i>	<i>8</i>	<i>14</i>	<i>10</i>
TOTAL SOUTH AMERICA, CENTRAL AMERICA & THE CARIBBEAN	75	57	49	35	62	49	47	74	75	89	99

WESTERN AUSTRALIA

TABLE 6.1 (CONTD) SETTLER ARRIVALS BY BIRTHPLACE, 1995-96 TO 2005-06

BIRTHPLACE	1995-96	1996-97	1997-98	1998-99	1999-00	2000-01	2001-02	2002-03	2003-04	2004-05	2005-06
SUB-SAHARAN AFRICA											
<i>Central & West Africa</i>											
Burkina Faso	-	-	-	-	-	-	-	-	1	-	-
Cameroon	-	-	-	-	-	-	1	1	-	-	-
Cape Verde	-	-	-	-	-	-	-	-	-	-	1
Congo	-	-	-	1	3	11	3	5	68	85	17
Congo Democratic Republic	-	2	1	2	-	-	-	6	19	11	42
Cote D'Ivoire	-	-	1	-	-	-	-	-	-	27	6
Gabon	-	-	-	-	-	-	-	-	-	-	1
Ghana	7	7	3	7	2	4	6	8	11	8	24
Guinea	-	-	-	-	-	1	3	4	1	24	14
Liberia	-	-	-	-	-	12	48	25	28	137	98
Mauritania	-	-	-	-	-	-	-	-	-	-	1
Niger	1	1	5	-	-	-	-	1	-	-	-
Nigeria	2	5	1	3	4	4	20	14	17	15	16
Senegal	1	-	-	-	-	1	2	2	-	-	2
Sierra Leone	1	1	-	1	-	48	84	35	25	109	55
<i>Total</i>	<i>12</i>	<i>16</i>	<i>11</i>	<i>14</i>	<i>9</i>	<i>81</i>	<i>167</i>	<i>101</i>	<i>170</i>	<i>416</i>	<i>277</i>
<i>Southern & East Africa</i>											
Angola	-	1	-	-	-	-	-	-	-	-	1
Botswana	8	15	20	8	-	3	4	6	13	7	4
Burundi	-	-	-	-	-	2	4	3	4	26	60
Djibouti	-	-	-	-	-	2	1	-	-	1	-
Eritrea (h)	42	32	9	31	24	39	20	15	24	15	33
Ethiopia (h)	54	25	39	53	48	74	49	63	110	82	36
Kenya	101	70	70	153	106	91	157	186	172	179	138
Lesotho	-	-	-	-	-	-	1	-	-	-	-
Madagascar	-	1	-	-	1	1	1	1	-	1	1
Malawi	1	1	1	6	3	4	4	1	12	10	4
Mauritius	19	10	6	18	17	21	35	46	42	50	68
Mozambique	-	2	5	1	2	5	4	6	7	2	1
Namibia	6	3	7	10	13	16	10	13	10	8	13
Reunion	-	-	-	1	-	-	1	-	-	1	2
Rwanda	1	-	-	-	1	-	-	1	8	14	22
Seychelles	14	6	6	8	9	-	10	3	14	7	19
Somalia	92	56	95	55	72	37	32	23	31	25	26
South Africa	896	954	1,220	1,581	1,840	1,584	1,471	1,144	1,550	1,178	1,086
Swaziland	-	1	3	4	4	1	1	2	5	1	3
Tanzania	6	6	3	8	5	3	8	5	16	25	88
Uganda	9	6	2	2	2	5	7	11	14	37	20
Zambia	15	23	31	19	32	17	39	25	38	29	31
Zimbabwe	99	97	103	121	261	274	367	526	688	432	354
Southern & East Africa nfd	-	-	1	-	-	-	-	-	-	-	-
<i>Total</i>	<i>1,363</i>	<i>1,309</i>	<i>1,621</i>	<i>2,079</i>	<i>2,440</i>	<i>2,179</i>	<i>2,226</i>	<i>2,080</i>	<i>2,758</i>	<i>2,130</i>	<i>2,010</i>
TOTAL											
SUB-SAHARAN AFRICA	1,375	1,325	1,632	2,093	2,449	2,260	2,393	2,181	2,928	2,546	2,287
SUPPLEMENTARY CODES (i)											
Fmr Ussr & Baltic States nfd	57	54	34	56	53	61	71	62	62	55	56
TOTAL											
SUPPLEMENTARY CODES	57	54	34	56	53	61	71	62	62	55	56
NOT STATED	3	2	1	11	14	5	4	6	8	-	3
TOTAL ALL COUNTRIES	11,318	10,518	9,741	10,672	11,512	11,565	10,954	12,279	15,411	16,318	17,638

(h) As reliable data are not available for component countries prior to 1995-96, care should be taken when interpreting the data.

(i) Supplementary codes cannot be classified to any major region in the Standard Australian Classification of Countries (SACC). This may lead to under reporting of their component countries in the rest of the table, care should be taken when interpreting the data.

TASMANIA

Table 7.1 SETTLER ARRIVALS BY BIRTHPLACE, 1995-96 TO 2005-06

BIRTHPLACE	1995-96	1996-97	1997-98	1998-99	1999-00	2000-01	2001-02	2002-03	2003-04	2004-05	2005-06
OCEANIA											
<i>Australia & External Territories (a)</i>	4	1	2	1	2	3	3	2	2	2	-
<i>New Zealand</i>	133	72	53	96	117	106	73	93	83	84	79
<i>Melanesia</i>											
New Caledonia	-	1	-	-	-	-	-	-	-	-	-
Papua New Guinea	2	1	1	2	-	-	1	-	-	1	1
Solomon Islands	1	-	-	-	-	-	-	-	-	-	-
<i>Total</i>	3	2	1	2	-	-	1	-	-	1	1
<i>Micronesia</i>											
Kiribati	-	-	-	-	-	-	-	1	-	-	-
<i>Total</i>	-	-	-	-	-	-	-	1	-	-	-
<i>Polynesia (excluding Hawaii)</i>											
Cook Islands	-	-	-	-	-	2	-	1	-	-	-
Fiji	10	18	8	2	5	7	11	1	9	2	6
French Polynesia	-	-	-	-	-	-	-	-	-	1	-
Niue	-	-	1	-	-	-	-	-	1	-	-
Samoa	1	-	3	-	1	-	-	3	3	-	-
Tokelau	-	-	-	1	-	-	-	-	-	-	-
Tonga	1	1	1	1	-	2	1	1	-	2	-
<i>Total</i>	12	19	13	4	6	11	12	6	13	5	6
TOTAL OCEANIA	152	94	69	103	125	120	89	102	98	92	86
EUROPE											
<i>United Kingdom & Ireland</i>											
U.K.	93	69	47	40	54	76	64	108	102	171	177
Ireland	2	7	2	4	9	1	1	2	5	4	9
<i>Total</i>	95	76	49	44	63	77	65	110	107	175	186
<i>Western Europe</i>											
Austria	-	3	-	1	-	1	-	-	-	1	1
Belgium	-	-	-	-	-	-	-	-	-	1	-
France	2	-	5	1	2	2	1	1	3	2	3
Germany	14	9	13	10	4	9	10	9	7	9	27
Netherlands	6	14	4	10	11	11	8	12	7	9	7
Switzerland	1	5	-	-	3	1	1	-	3	6	-
<i>Total</i>	23	31	22	22	20	24	20	22	20	28	38
<i>Northern Europe</i>											
Denmark	3	2	1	1	1	1	-	1	2	1	1
Finland	2	1	-	1	-	-	-	1	3	-	-
Iceland	-	-	-	-	-	-	-	-	-	1	-
Norway	1	-	-	-	-	-	-	-	-	-	2
Sweden	6	1	2	-	2	-	-	2	1	1	2
<i>Total</i>	12	4	3	2	3	1	-	4	6	3	5
<i>Southern Europe</i>											
Italy	1	2	-	-	1	2	3	-	2	-	4
Malta	-	1	-	-	-	-	-	-	-	-	-
Portugal	-	-	-	-	-	-	-	-	-	1	1
Spain	-	-	-	-	-	-	-	1	1	1	-
<i>Total</i>	1	3	-	-	1	2	3	1	3	2	5

(a) The Australia component consists of persons born in Australia who have settled overseas and returned.

TASMANIA

TABLE 7.1 (CONTD) SETTLER ARRIVALS BY BIRTHPLACE, 1995-96 TO 2005-06

BIRTHPLACE	1995-96	1996-97	1997-98	1998-99	1999-00	2000-01	2001-02	2002-03	2003-04	2004-05	2005-06
<i>South Eastern Europe</i>											
Albania	-	-	-	-	-	2	1	-	-	1	-
Bosnia & Herzegovina (b)	30	37	41	15	3	2	8	-	1	-	-
Bulgaria	-	-	-	-	-	1	-	-	1	2	-
Croatia (b)	7	3	22	12	2	2	1	6	-	-	1
Cyprus	-	-	-	1	-	-	2	-	1	1	-
Fmr. Yugo. Rep. of Macedonia	-	4	-	-	-	-	1	-	-	-	-
Greece	-	1	-	-	-	3	-	-	1	1	1
Romania	1	-	-	1	2	2	4	-	1	1	-
Serbia & Montenegro (b)	-	-	-	52	8	28	65	24	8	9	-
Slovenia (b)	-	3	-	-	-	-	-	-	-	-	-
Former Yugoslavia nfd (b)	8	7	22	-	-	-	-	-	-	-	-
<i>Total</i>	46	55	85	81	15	40	82	30	13	15	2
<i>Eastern Europe</i>											
Belarus (c)	-	-	-	-	-	-	-	-	2	-	-
Czech Republic (d)	2	-	-	-	-	-	-	-	-	-	-
Former Czechoslovakia (d)	-	-	-	2	-	-	1	1	-	-	1
Hungary	-	4	-	3	1	-	-	1	-	-	-
Latvia (c)	-	-	-	-	1	-	1	2	-	2	-
Poland	3	2	-	3	1	4	-	4	7	8	3
Russian Federation (c)	-	2	-	-	1	-	-	1	-	2	3
Ukraine	1	-	1	-	-	-	-	-	-	2	-
<i>Total</i>	6	8	1	8	4	4	2	9	9	14	7
TOTAL EUROPE	183	177	160	157	106	148	172	176	158	237	243
NORTH AFRICA & THE MIDDLE EAST											
<i>North Africa</i>											
Algeria	-	-	-	-	-	-	1	-	-	-	-
Egypt	1	-	-	2	-	3	4	9	13	10	10
Libya	-	1	-	-	-	-	-	-	-	1	-
Morocco	-	-	-	1	-	-	-	-	-	-	-
Sudan	-	5	8	16	22	87	71	147	172	172	82
Tunisia	-	-	-	-	1	-	-	-	-	-	-
<i>Total</i>	1	6	8	19	23	90	76	156	185	183	92
<i>The Middle East</i>											
Bahrain	-	-	1	-	-	2	-	-	-	-	-
Iran	1	8	3	6	2	1	7	2	9	4	4
Iraq	2	1	12	1	5	13	4	13	19	5	6
Israel	1	1	-	-	-	-	-	-	-	-	2
Jordan	1	-	-	-	-	-	-	-	-	-	-
Kuwait	-	-	-	-	-	-	-	-	1	1	-
Lebanon	2	1	-	-	-	1	2	2	2	1	2
Oman	-	-	-	-	-	-	-	-	-	-	1
Saudi Arabia	-	-	1	-	4	-	-	-	-	2	-
Syria	-	1	1	2	1	1	-	4	1	1	4
Turkey	-	7	-	1	-	3	3	3	5	-	1
United Arab Emirates	-	1	-	-	-	-	-	-	-	-	-
Yemen	-	-	-	-	-	-	3	-	-	1	-
<i>Total</i>	7	20	18	10	12	21	19	24	37	15	20
TOTAL NORTH AFRICA & THE MIDDLE EAST	8	26	26	29	35	111	95	180	222	198	112

(b) As reliable data are not available for component countries prior to 1995-96, care should be taken when interpreting the data. Serbia and Montenegro was previously called the Federal Republic of Yugoslavia and since 1998-99 contains the Former Yugoslavia nfd.

(c) As reliable data are not available for component countries prior to 1995-96, care should be taken when interpreting the data.

(d) As reliable data are not available for component countries prior to 1995-96, care should be taken when interpreting the data.

TASMANIA

TABLE 7.1 (CONTD) SETTLER ARRIVALS BY BIRTHPLACE, 1995-96 TO 2005-06

BIRTHPLACE	1995-96	1996-97	1997-98	1998-99	1999-00	2000-01	2001-02	2002-03	2003-04	2004-05	2005-06
SOUTHEAST ASIA											
Burma (Myanmar)	-	-	-	-	-	-	2	-	1	1	-
Cambodia	1	-	-	-	-	-	2	-	-	1	-
East Timor	-	-	-	-	-	-	-	-	-	-	1
Indonesia	3	1	1	2	6	2	14	8	4	4	9
Laos	9	-	1	-	-	-	1	3	-	-	-
Malaysia	6	2	-	3	10	8	5	16	11	12	15
Philippines	20	13	15	15	16	28	18	28	30	40	33
Singapore	8	5	5	6	1	5	5	10	19	35	8
Thailand	13	9	2	4	11	3	16	13	19	10	12
Viet Nam	-	2	2	3	4	3	6	7	3	1	3
TOTAL SOUTHEAST ASIA	60	32	26	33	48	49	69	85	87	104	81
NORTHEAST ASIA											
China (f)	8	6	6	12	11	17	15	27	25	31	29
Hong Kong (g)	5	1	5	5	5	1	2	3	3	5	3
Japan	6	4	5	1	2	7	2	5	9	8	4
Korea	1	-	-	3	8	4	6	5	11	35	16
Mongolia	-	-	-	-	-	1	-	3	-	-	2
Taiwan	2	1	-	-	4	5	5	2	1	-	8
TOTAL NORTHEAST ASIA	22	12	16	21	30	35	30	45	49	79	62
SOUTHERN ASIA											
Bangladesh	-	3	-	5	3	1	4	4	-	-	2
India	14	13	7	10	19	17	11	23	27	30	47
Nepal	-	-	-	-	4	1	1	-	-	-	2
Pakistan	-	4	-	-	4	2	-	1	4	3	1
Sri Lanka	5	8	7	1	2	8	4	5	8	4	6
TOTAL SOUTHERN ASIA	19	28	14	16	32	29	20	33	39	37	58
CENTRAL ASIA											
Afghanistan	-	-	-	-	-	5	-	4	39	12	2
Kazakhstan (d)	-	-	-	-	-	-	-	1	-	-	-
Uzbekistan (d)	-	1	-	-	-	-	-	-	-	-	1
TOTAL CENTRAL ASIA	-	1	-	-	-	5	-	5	39	12	3
NORTHERN AMERICA											
Canada	10	9	5	15	15	12	3	10	6	6	14
U.S.A.	34	6	18	10	19	7	11	20	17	34	33
TOTAL NORTHERN AMERICA	44	15	23	25	34	19	14	30	23	40	47
SOUTH AMERICA, CENTRAL AMERICA & THE CARIBBEAN											
<i>South America</i>											
Argentina	-	-	-	-	1	-	-	-	9	4	4
Bolivia	-	-	-	-	-	1	-	-	-	-	-
Brazil	-	-	-	8	-	-	2	2	1	4	7
Chile	-	-	3	-	2	1	-	-	2	2	2
Colombia	-	-	-	-	-	-	1	-	1	-	1
Paraguay	-	-	-	-	-	-	1	-	-	-	-
Peru	1	-	-	-	-	-	1	4	-	3	2
Venezuela	-	-	1	-	-	-	-	-	-	-	-
Total	1	-	4	8	3	2	5	6	13	13	16

(d) As reliable data are not available for component countries prior to 1995-96, care should be taken when interpreting the data.

(f) Excluding SARs and Taiwan.

(g) SAR of China.

TASMANIA

TABLE 7.1 (CONTD) SETTLER ARRIVALS BY BIRTHPLACE, 1995-96 TO 2005-06

BIRTHPLACE	1995-96	1996-97	1997-98	1998-99	1999-00	2000-01	2001-02	2002-03	2003-04	2004-05	2005-06
<i>Central America</i>											
Costa Rica	-	-	-	-	-	-	1	1	-	-	3
El Salvador	32	18	3	1	-	-	-	-	-	-	-
Mexico	-	1	-	-	-	-	-	-	1	1	1
<i>Total</i>	32	19	3	1	-	-	1	1	1	1	4
<i>The Caribbean</i>											
Cuba	-	-	-	-	-	1	-	-	1	-	-
Haiti	-	-	-	2	-	-	-	-	-	-	-
Jamaica	-	-	1	-	-	-	-	-	-	-	-
Trinidad & Tobago	-	-	-	-	-	-	-	-	1	-	-
<i>Total</i>	-	-	1	2	-	1	-	-	2	-	-
TOTAL SOUTH AMERICA, CENTRAL AMERICA & THE CARIBBEAN	33	19	8	11	3	3	6	7	16	14	20
SUB-SAHARAN AFRICA											
<i>Central & West Africa</i>											
Congo	-	-	-	-	-	-	-	1	-	1	-
Congo Democratic Republic	-	-	-	-	-	-	-	-	-	-	1
Ghana	1	-	-	-	-	-	-	1	-	4	5
Guinea	-	-	-	-	-	-	-	1	2	1	-
Liberia	-	-	-	-	-	-	-	-	-	8	8
Niger	-	-	-	-	1	-	-	-	-	-	2
Nigeria	2	-	-	-	-	-	-	-	3	-	-
Sierra Leone	-	-	-	-	-	-	14	33	10	42	37
Togo	-	-	-	-	-	-	-	-	-	1	-
<i>Total</i>	3	-	-	-	1	-	14	36	15	57	53
<i>Southern & East Africa</i>											
Botswana	-	-	2	-	-	-	-	-	-	-	-
Burundi	-	-	-	-	-	-	-	-	1	1	21
Eritrea	-	-	-	-	-	-	8	6	13	3	3
Ethiopia	3	3	5	11	7	9	5	46	54	27	19
Kenya	-	1	1	5	-	1	4	10	5	9	1
Malawi	-	-	-	-	-	-	-	1	-	-	-
Mozambique	-	-	-	-	-	-	-	-	-	1	-
Rwanda	-	-	-	-	-	-	-	12	1	-	-
Seychelles	-	-	-	-	-	-	-	-	-	-	3
Somalia	-	2	-	11	-	2	9	2	1	-	-
South Africa	22	15	16	17	17	16	35	27	34	24	34
Tanzania	-	-	-	-	-	-	-	-	1	-	10
Uganda	-	-	-	-	-	-	2	3	7	-	7
Zambia	1	-	-	-	-	-	-	-	3	1	-
Zimbabwe	1	3	1	2	1	2	9	2	6	7	10
<i>Total</i>	27	24	25	46	25	30	72	109	126	73	108
TOTAL SUB-SAHARAN AFRICA	30	24	25	46	26	30	86	145	141	130	161
SUPPLEMENTARY CODES (i)											
Fmr Ussr & Baltic States nfd	4	3	2	1	5	15	7	3	9	1	6
TOTAL SUPPLEMENTARY CODES	4	3	2	1	5	15	7	3	9	1	6
NOT STATED	1	-	-	-	-	-	1	-	3	-	-
TOTAL ALL COUNTRIES	556	431	369	442	444	564	589	811	884	944	879

(i) Supplementary codes cannot be classified to any major region in the Standard Australian Classification of Countries (SACC). This may lead to under reporting of their component countries in the rest of the table, care should be taken when interpreting the data.

NORTHERN TERRITORY**Table 8.1** **SETTLER ARRIVALS BY BIRTHPLACE, 1995-96 TO 2005-06**

BIRTHPLACE	1995-96	1996-97	1997-98	1998-99	1999-00	2000-01	2001-02	2002-03	2003-04	2004-05	2005-06
OCEANIA											
<i>Australia & External Territories (a)</i>	6	3	2	3	4	4	1	2	6	5	5
<i>New Zealand</i>	62	61	49	93	101	91	63	34	66	46	96
<i>Melanesia</i>											
Papua New Guinea	6	8	1	1	4	4	9	6	13	8	6
Solomon Islands	-	-	-	5	1	1	-	-	1	3	-
<i>Total</i>	6	8	1	6	5	5	9	6	14	11	6
<i>Micronesia</i>											
Kiribati	-	-	-	1	-	-	4	-	-	1	-
<i>Total</i>	-	-	-	1	-	-	4	-	-	1	-
<i>Polynesia (excluding Hawaii)</i>											
Cook Islands	-	-	2	-	-	-	-	-	1	-	-
Fiji	4	3	2	2	-	6	4	4	1	1	11
French Polynesia	-	1	-	-	-	-	-	-	-	-	-
Samoa	1	1	3	1	-	-	-	-	1	1	2
Tonga	2	-	-	-	2	2	-	2	1	-	2
Tuvalu	-	1	-	-	-	-	-	-	-	-	-
<i>Total</i>	7	6	7	3	2	8	4	6	4	2	15
TOTAL OCEANIA	81	78	59	106	112	108	81	48	90	65	122
EUROPE											
<i>United Kingdom & Ireland</i>											
U.K.	74	68	80	79	61	51	36	52	90	91	67
Ireland	4	7	4	3	5	4	6	6	5	6	6
<i>Total</i>	78	75	84	82	66	55	42	58	95	97	73
<i>Western Europe</i>											
Austria	1	1	-	-	-	-	-	-	2	-	-
Belgium	-	1	1	4	-	-	-	-	-	2	-
France	-	2	1	2	6	3	3	2	2	1	1
Germany	9	13	9	11	10	5	7	7	4	14	15
Netherlands	4	6	4	3	11	1	3	2	2	7	1
Switzerland	7	4	1	9	3	-	2	2	2	3	4
<i>Total</i>	21	27	16	29	30	9	15	13	12	27	21
<i>Northern Europe</i>											
Denmark	1	-	1	2	3	1	-	3	-	-	-
Iceland	-	-	-	-	-	1	-	-	-	-	-
Norway	1	-	-	-	-	-	-	-	1	-	-
Sweden	6	1	2	-	-	1	-	3	1	-	-
<i>Total</i>	8	1	3	2	3	3	-	6	2	-	-
<i>Southern Europe</i>											
Italy	3	2	-	-	2	-	-	-	2	-	2
Malta	-	-	-	-	-	-	-	-	-	1	1
Portugal	7	5	1	-	-	1	1	-	1	1	-
Spain	1	-	3	1	1	-	-	1	-	-	1
<i>Total</i>	11	7	4	1	3	1	1	1	3	2	4

(a) The Australia component consists of persons born in Australia who have settled overseas and returned.

NORTHERN TERRITORY**TABLE 8.1 (CONTD) SETTLER ARRIVALS BY BIRTHPLACE, 1995-96 TO 2005-06**

BIRTHPLACE	1995-96	1996-97	1997-98	1998-99	1999-00	2000-01	2001-02	2002-03	2003-04	2004-05	2005-06
<i>South Eastern Europe</i>											
Albania	-	-	-	1	-	1	-	-	-	-	1
Bosnia & Herzegovina (b)	6	13	22	9	7	-	2	-	-	1	2
Bulgaria	1	-	-	-	-	-	1	1	-	-	-
Croatia (b)	3	1	6	-	-	1	3	-	-	1	1
Cyprus	-	1	-	2	1	1	-	-	-	-	1
Fmr. Yugo. Rep. of Macedonia	-	-	-	-	-	-	-	-	-	-	1
Greece	18	32	11	14	6	3	4	-	5	7	9
Romania	2	-	-	-	-	-	-	2	1	2	1
Serbia & Montenegro (b)	-	-	-	5	2	-	2	5	1	1	1
Slovenia (b)	1	-	-	-	-	-	-	-	-	-	-
Former Yugoslavia nfd (b)	3	13	2	-	-	-	-	-	-	-	-
<i>Total</i>	<i>34</i>	<i>60</i>	<i>41</i>	<i>31</i>	<i>16</i>	<i>6</i>	<i>12</i>	<i>8</i>	<i>7</i>	<i>12</i>	<i>17</i>
<i>Eastern Europe</i>											
Czech Republic (d)	2	-	-	-	-	-	2	-	-	-	-
Former Czechoslovakia (d)	1	-	-	-	1	1	1	-	-	1	-
Hungary	2	2	1	2	-	-	1	-	-	3	-
Poland	2	-	-	1	1	4	-	-	1	2	6
Russian Federation	-	1	3	-	-	-	4	-	-	1	-
Slovakia (d)	-	-	1	-	-	-	-	-	-	1	-
Ukraine	-	2	1	-	-	-	-	2	-	-	-
<i>Total</i>	<i>7</i>	<i>5</i>	<i>6</i>	<i>3</i>	<i>2</i>	<i>5</i>	<i>8</i>	<i>2</i>	<i>1</i>	<i>8</i>	<i>6</i>
TOTAL EUROPE	159	175	154	148	120	79	78	88	120	146	121
NORTH AFRICA & THE MIDDLE EAST											
<i>North Africa</i>											
Egypt	-	-	-	-	-	1	4	1	4	6	9
Morocco	-	-	-	-	1	-	-	1	1	-	-
Sudan	-	-	4	12	17	47	13	56	52	67	45
<i>Total</i>	<i>-</i>	<i>-</i>	<i>4</i>	<i>12</i>	<i>18</i>	<i>48</i>	<i>17</i>	<i>58</i>	<i>57</i>	<i>73</i>	<i>54</i>
<i>The Middle East</i>											
Iran	7	2	1	2	-	1	-	2	1	1	-
Iraq	-	9	8	6	5	4	2	12	5	2	7
Israel	1	-	-	-	-	2	-	1	1	-	-
Jordan	-	-	2	-	-	-	-	-	-	1	-
Kuwait	1	-	-	-	-	-	-	-	-	-	-
Lebanon	1	-	2	2	-	-	2	2	1	2	-
Oman	-	-	2	-	-	-	-	-	-	-	-
Qatar	-	-	-	-	-	1	-	-	-	-	-
Syria	-	-	-	-	-	1	-	-	-	-	-
Turkey	-	-	2	1	2	-	1	-	-	1	3
United Arab Emirates	-	-	-	-	-	-	-	-	1	-	-
Yemen	-	-	-	-	-	2	-	-	-	-	-
Middle East nfd	-	-	-	-	-	1	-	-	-	-	-
<i>Total</i>	<i>10</i>	<i>11</i>	<i>17</i>	<i>11</i>	<i>7</i>	<i>12</i>	<i>5</i>	<i>17</i>	<i>9</i>	<i>7</i>	<i>10</i>
TOTAL NORTH AFRICA & THE MIDDLE EAST	10	11	21	23	25	60	22	75	66	80	64

(b) As reliable data are not available for component countries prior to 1995-96, care should be taken when interpreting the data. Serbia and Montenegro was previously called the Federal Republic of Yugoslavia and since 1998-99 contains the Former Yugoslavia nfd.

(c) As reliable data are not available for component countries prior to 1995-96, care should be taken when interpreting the data.

(d) As reliable data are not available for component countries prior to 1995-96, care should be taken when interpreting the data.

NORTHERN TERRITORY**TABLE 8.1 (CONTD) SETTLER ARRIVALS BY BIRTHPLACE, 1995-96 TO 2005-06**

BIRTHPLACE	1995-96	1996-97	1997-98	1998-99	1999-00	2000-01	2001-02	2002-03	2003-04	2004-05	2005-06
SOUTHEAST ASIA											
Brunei	-	-	6	6	1	-	3	-	3	1	8
Burma (Myanmar)	-	1	-	-	-	1	1	3	-	2	-
Cambodia	6	4	1	3	3	2	7	5	4	2	6
East Timor (e)	-	-	-	-	-	5	7	13	11	7	9
Indonesia (e)	57	40	22	26	19	22	40	39	33	20	32
Laos	-	-	-	-	-	-	-	1	-	1	-
Malaysia	12	8	6	3	8	20	4	9	12	3	21
Philippines	50	50	58	41	47	30	40	46	53	48	66
Singapore	1	7	3	7	2	6	12	2	4	5	47
Thailand	15	21	6	9	12	12	31	22	28	18	17
Viet Nam	10	14	11	11	9	5	12	12	10	14	12
TOTAL SOUTHEAST ASIA	151	145	113	106	101	103	157	152	158	121	218
NORTHEAST ASIA											
China (f)	10	19	13	11	11	11	16	8	14	15	29
Hong Kong (g)	9	10	14	10	2	-	1	1	-	2	4
Japan	2	2	3	6	1	2	3	5	2	4	2
Korea	2	1	3	1	3	2	3	1	3	3	3
Macau (g)	1	1	-	-	-	-	-	-	-	-	-
Taiwan	1	-	3	2	-	1	2	-	1	1	2
TOTAL NORTHEAST ASIA	25	33	36	30	17	16	25	15	20	25	40
SOUTHERN ASIA											
Bangladesh	-	-	1	-	6	1	-	3	5	1	4
India	16	4	6	13	24	20	18	14	25	32	32
Nepal	2	-	1	-	-	-	-	-	3	-	3
Pakistan	1	1	-	3	1	6	1	8	10	6	9
Sri Lanka	8	10	8	3	7	13	2	10	5	9	2
TOTAL SOUTHERN ASIA	27	15	16	19	38	40	21	35	48	48	50
CENTRAL ASIA											
Afghanistan	-	-	-	1	-	2	1	1	2	-	3
TOTAL CENTRAL ASIA	-	-	-	1	-	2	1	1	2	-	3
NORTHERN AMERICA											
Canada	7	5	9	3	4	6	1	1	6	4	4
U.S.A.	16	8	7	12	12	15	8	6	10	6	22
TOTAL NORTHERN AMERICA	23	13	16	15	16	21	9	7	16	10	26
SOUTH AMERICA, CENTRAL AMERICA & THE CARIBBEAN											
<i>South America</i>											
Argentina	-	-	2	-	-	1	-	-	-	-	1
Bolivia	-	1	-	-	-	-	-	2	-	-	-
Brazil	1	1	-	1	1	2	-	1	1	1	3
Chile	-	-	2	-	-	-	-	-	1	-	-
Colombia	-	-	-	-	-	-	3	-	-	-	-
Ecuador	-	-	-	-	-	-	-	-	-	-	1
Falkland Islands	-	-	-	-	-	-	-	-	2	-	-
Peru	-	1	-	-	-	-	-	2	2	1	-
Total	1	3	4	1	1	3	3	5	6	2	5

(e) East Timor previously recorded under Indonesia, care should be taken when interpreting the data.

(f) Excluding SARs and Taiwan.

(g) SAR of China.

NORTHERN TERRITORY**TABLE 8.1 (CONTD) SETTLER ARRIVALS BY BIRTHPLACE, 1995-96 TO 2005-06**

BIRTHPLACE	1995-96	1996-97	1997-98	1998-99	1999-00	2000-01	2001-02	2002-03	2003-04	2004-05	2005-06
<i>Central America</i>											
Guatemala	-	-	-	-	-	-	-	-	-	-	1
Honduras	-	-	-	-	-	-	-	-	-	-	1
Mexico	-	-	-	1	-	-	-	-	-	-	-
<i>Total</i>	-	-	-	1	-	-	-	-	-	-	2
<i>The Caribbean</i>											
Dominican Republic	-	-	-	-	-	-	-	-	-	1	-
Haiti	-	-	-	-	-	-	6	-	-	-	-
Jamaica	-	-	-	-	-	-	-	-	-	-	1
<i>Total</i>	-	-	-	-	-	-	6	-	-	1	1
TOTAL SOUTH AMERICA, CENTRAL AMERICA & THE CARIBBEAN	1	3	4	2	1	3	9	5	6	3	8
SUB-SAHARAN AFRICA											
<i>Central & West Africa</i>											
Congo	-	-	-	-	-	-	-	-	16	5	3
Cote D'Ivoire	-	-	-	-	-	-	-	-	-	1	1
Ghana	-	1	-	-	-	-	-	-	4	1	5
Guinea	-	-	-	-	-	-	-	-	3	4	2
Liberia	-	-	-	-	-	-	20	3	4	20	24
Nigeria	2	-	-	-	-	-	1	6	3	1	1
Sierra Leone	-	3	-	-	-	3	1	-	-	2	2
<i>Total</i>	2	4	-	-	-	3	22	9	30	34	38
<i>Southern & East Africa</i>											
Botswana	-	-	-	-	-	-	-	1	-	-	-
Burundi	-	-	-	-	-	-	-	-	-	4	1
Djibouti	-	-	-	-	-	-	1	-	-	-	-
Eritrea	-	-	-	-	-	-	-	2	-	-	-
Ethiopia	-	-	2	8	15	7	7	9	10	10	2
Kenya	-	-	-	4	1	9	-	7	6	4	25
Madagascar	-	-	-	-	-	-	1	-	-	-	-
Mauritius	-	-	-	-	-	-	-	3	-	-	-
Mozambique	-	1	-	-	-	-	1	-	-	-	-
Namibia	-	-	-	-	-	-	-	-	-	-	1
Rwanda	-	-	-	-	-	-	-	-	-	-	7
Somalia	-	-	-	1	-	2	-	1	1	6	10
South Africa	11	5	7	7	19	8	12	17	8	13	11
Tanzania	1	-	1	-	-	-	-	-	1	1	4
Uganda	1	-	-	-	-	-	-	2	3	5	9
Zambia	-	1	-	-	-	-	2	1	-	1	2
Zimbabwe	1	-	5	4	4	10	4	-	5	12	14
<i>Total</i>	14	7	15	24	39	36	28	43	34	56	86
TOTAL SUB-SAHARAN AFRICA	16	11	15	24	39	39	50	52	64	90	124
SUPPLEMENTARY CODES (i)											
Fmr Ussr & Baltic States nfd	1	4	1	-	2	1	6	5	6	4	4
TOTAL SUPPLEMENTARY CODES	1	4	1	-	2	1	6	5	6	4	4
NOT STATED	-	2	-	-	-	-	-	-	-	-	-
TOTAL ALL COUNTRIES	494	490	435	474	471	472	459	483	596	592	780

(i) Supplementary codes cannot be classified to any major region in the Standard Australian Classification of Countries (SACC). This may lead to under reporting of their component countries in the rest of the table, care should be taken when interpreting the data.

AUSTRALIAN CAPITAL TERRITORY

Table 9.1 SETTLER ARRIVALS BY BIRTHPLACE, 1995-96 TO 2005-06

BIRTHPLACE	1995-96	1996-97	1997-98	1998-99	1999-00	2000-01	2001-02	2002-03	2003-04	2004-05	2005-06
OCEANIA											
<i>Australia & External Territories (a)</i>	11	5	5	4	4	9	5	4	9	14	6
<i>New Zealand</i>	73	64	83	161	124	195	133	87	89	85	96
<i>Melanesia</i>											
New Caledonia	-	-	-	-	-	-	-	-	-	1	-
Papua New Guinea	1	4	1	-	-	-	-	7	-	6	-
Solomon Islands	1	-	-	-	3	-	-	-	1	2	1
Vanuatu	1	-	-	-	-	-	-	1	-	-	-
<i>Total</i>	3	4	1	-	3	-	-	8	1	9	1
<i>Micronesia</i>											
Guam	-	-	2	-	-	-	-	-	-	-	-
<i>Total</i>	-	-	2	-	-	-	-	-	-	-	-
<i>Polynesia (excluding Hawaii)</i>											
Cook Islands	1	1	-	-	-	-	2	-	1	-	-
Fiji	11	12	7	16	16	24	12	22	12	18	26
Niue	-	-	-	1	-	-	-	-	2	1	-
Samoa	7	10	8	10	6	7	6	8	7	5	4
Samoa American	-	-	-	-	2	1	-	-	-	-	-
Tonga	2	-	7	3	3	1	3	3	2	3	3
Tuvalu	-	-	-	-	1	-	-	-	-	-	-
<i>Total</i>	21	23	22	30	28	33	23	33	24	27	33
TOTAL OCEANIA	108	96	113	195	159	237	161	132	123	135	136
EUROPE											
<i>United Kingdom & Ireland</i>											
U.K.	122	107	61	69	70	100	92	105	158	138	133
Ireland	8	5	9	2	2	2	-	6	2	6	5
<i>Total</i>	130	112	70	71	72	102	92	111	160	144	138
<i>Western Europe</i>											
Austria	1	1	2	1	2	2	2	-	1	-	2
Belgium	-	2	4	1	1	1	4	-	2	-	-
France	9	5	4	2	3	5	10	6	6	3	8
Germany	35	17	9	3	10	24	10	8	12	12	21
Netherlands	5	1	8	4	9	6	8	2	2	4	7
Switzerland	2	2	3	7	1	2	4	-	1	-	4
<i>Total</i>	52	28	30	18	26	40	38	16	24	19	42
<i>Northern Europe</i>											
Denmark	2	2	3	3	2	1	1	6	1	-	-
Finland	2	-	6	-	1	1	-	3	1	1	2
Iceland	-	-	-	-	-	2	-	-	-	-	-
Norway	-	-	1	-	-	1	-	1	4	-	-
Sweden	2	1	1	2	3	-	4	5	3	3	3
<i>Total</i>	6	3	11	5	6	5	5	15	9	4	5

(a) The Australia component consists of persons born in Australia who have settled overseas and returned.

AUSTRALIAN CAPITAL TERRITORY

TABLE 9.1 (CONTD) SETTLER ARRIVALS BY BIRTHPLACE, 1995-96 TO 2005-06

BIRTHPLACE	1995-96	1996-97	1997-98	1998-99	1999-00	2000-01	2001-02	2002-03	2003-04	2004-05	2005-06
<i>Southern Europe</i>											
Andorra	-	1	-	-	-	-	-	-	-	-	-
Italy	2	1	3	4	-	1	25	4	3	2	4
Malta	-	4	-	-	1	2	-	1	-	-	2
Portugal	1	-	-	-	-	-	-	1	2	-	-
Spain	2	3	-	2	-	1	2	-	1	-	1
<i>Total</i>	5	9	3	6	1	4	27	6	6	2	7
<i>South Eastern Europe</i>											
Albania	2	1	-	-	1	-	-	6	-	-	-
Bosnia & Herzegovina (b)	33	30	10	10	6	7	5	1	3	1	1
Bulgaria	3	-	-	-	-	-	1	4	-	3	-
Croatia (b)	7	10	5	8	13	22	4	4	1	-	-
Cyprus	1	2	-	-	-	-	-	-	1	-	-
Fmr. Yugo. Rep. of Macedonia	5	1	9	8	-	4	11	16	1	11	7
Greece	6	2	3	1	-	1	-	3	-	-	1
Romania	6	-	-	8	12	5	1	1	7	3	2
Serbia & Montenegro (b)	-	-	-	31	42	43	35	13	11	10	13
Slovenia (b)	-	-	1	-	1	-	-	1	-	-	2
Former Yugoslavia nfd (b)	30	32	10	-	-	-	-	-	-	-	-
<i>Total</i>	93	78	38	66	75	82	57	49	24	28	26
<i>Eastern Europe</i>											
Belarus (c)	-	-	-	-	2	-	-	-	3	-	-
Czech Republic (d)	1	-	1	1	1	-	-	1	-	-	-
Estonia (c)	-	-	-	-	-	1	-	-	-	-	-
Former Czechoslovakia (d)	1	-	-	3	2	-	1	7	1	1	1
Hungary	1	-	1	1	-	-	2	1	1	-	-
Latvia (c)	-	3	-	-	-	-	-	1	-	-	1
Lithuania (c)	-	-	1	-	-	-	-	1	-	-	-
Poland	11	2	11	6	4	6	5	5	-	2	8
Russian Federation (c)	-	5	2	2	1	2	4	3	4	8	5
Slovakia (d)	-	-	1	-	-	-	-	-	1	-	1
Ukraine	1	6	5	-	3	1	1	-	1	1	3
<i>Total</i>	15	16	22	13	13	10	13	19	11	12	19
TOTAL EUROPE	301	246	174	179	193	243	232	216	234	209	237
NORTH AFRICA & THE MIDDLE EAST											
<i>North Africa</i>											
Algeria	-	-	-	-	-	14	1	-	-	-	1
Egypt	1	3	3	3	1	1	1	1	5	2	12
Libya	-	1	1	-	-	-	-	-	-	-	-
Morocco	-	-	1	-	-	-	1	-	1	2	1
Sudan	4	2	-	15	2	7	18	15	50	65	28
<i>Total</i>	5	6	5	18	3	22	21	16	56	69	42

North Africa

Algeria	-	-	-	-	-	14	1	-	-	-	1
Egypt	1	3	3	3	1	1	1	1	5	2	12
Libya	-	1	1	-	-	-	-	-	-	-	-
Morocco	-	-	1	-	-	-	1	-	1	2	1
Sudan	4	2	-	15	2	7	18	15	50	65	28
<i>Total</i>	5	6	5	18	3	22	21	16	56	69	42

(b) As reliable data are not available for component countries prior to 1995-96, care should be taken when interpreting the data. Serbia and Montenegro was previously called the Federal Republic of Yugoslavia and since 1998-99 contains the Former Yugoslavia nfd.

(c) As reliable data are not available for component countries prior to 1995-96, care should be taken when interpreting the data.

(d) As reliable data are not available for component countries prior to 1995-96, care should be taken when interpreting the data.

AUSTRALIAN CAPITAL TERRITORY**TABLE 9.1 (CONTD) SETTLER ARRIVALS BY BIRTHPLACE, 1995-96 TO 2005-06**

BIRTHPLACE	1995-96	1996-97	1997-98	1998-99	1999-00	2000-01	2001-02	2002-03	2003-04	2004-05	2005-06
<i>The Middle East</i>											
Gaza Strip & West Bank	-	-	-	1	-	-	-	-	-	-	-
Iran	7	8	4	4	8	15	13	16	6	19	12
Iraq	4	5	3	8	7	7	16	37	12	10	21
Israel	1	3	2	-	-	-	-	-	4	1	8
Jordan	3	1	1	1	3	4	1	1	2	5	2
Kuwait	-	-	-	-	-	1	-	-	-	-	-
Lebanon	3	4	4	8	5	8	6	10	6	9	7
Qatar	-	2	-	-	-	-	-	-	-	-	-
Saudi Arabia	-	2	-	-	-	-	1	1	3	1	-
Syria	1	-	-	-	1	-	5	1	-	1	-
Turkey	-	4	2	1	2	5	2	6	3	4	2
United Arab Emirates	3	-	-	-	-	1	1	2	-	-	-
Yemen	-	-	-	-	-	-	-	-	1	-	-
<i>Total</i>	22	29	16	23	26	41	45	74	37	50	52
TOTAL NORTH AFRICA & THE MIDDLE EAST	27	35	21	41	29	63	66	90	93	119	94
SOUTHEAST ASIA											
Brunei	-	1	-	-	-	-	-	1	-	-	-
Burma (Myanmar)	17	38	14	6	5	6	23	9	5	10	10
Cambodia	11	3	3	-	2	4	4	3	7	8	6
East Timor (e)	-	-	-	-	-	-	1	-	1	-	1
Indonesia (e)	10	4	6	9	10	11	37	12	9	8	13
Laos	5	2	1	-	1	4	1	3	1	2	3
Malaysia	8	8	5	8	7	9	14	6	26	16	21
Philippines	60	30	36	27	28	49	51	19	33	43	77
Singapore	3	7	5	1	-	10	5	9	6	16	16
Thailand	12	17	9	7	13	6	27	22	20	16	26
Viet Nam	47	9	12	18	11	28	25	34	29	18	37
TOTAL SOUTHEAST ASIA	173	119	91	76	77	127	188	118	137	137	210
NORTHEAST ASIA											
China (f)	97	77	52	45	77	76	82	58	87	125	143
Hong Kong (g)	15	17	19	13	8	17	6	8	7	11	14
Japan	7	6	6	7	16	5	16	11	4	9	10
Korea	8	6	7	9	19	15	6	16	14	12	22
Macau (g)	1	-	-	-	-	-	1	1	-	-	3
Mongolia	-	-	-	1	-	1	2	-	-	-	-
Taiwan	4	10	5	5	8	13	19	9	5	7	2
TOTAL NORTHEAST ASIA	132	116	89	80	128	127	132	103	117	164	194
SOUTHERN ASIA											
Bangladesh	17	4	-	9	8	10	14	16	17	40	25
Bhutan	-	-	1	-	-	-	-	-	-	-	-
India	37	35	34	44	67	90	58	67	115	112	117
Nepal	-	-	-	-	2	-	1	6	-	9	2
Pakistan	7	14	2	8	2	32	42	11	26	25	23
Sri Lanka	30	20	23	19	25	43	37	15	20	41	41
TOTAL SOUTHERN ASIA	91	73	60	80	104	175	152	115	178	227	208

(e) East Timor previously recorded under Indonesia, care should be taken when interpreting the data.

(f) Excluding SARs and Taiwan.

(g) SAR of China.

AUSTRALIAN CAPITAL TERRITORY

TABLE 9.1 (CONTD) SETTLER ARRIVALS BY BIRTHPLACE, 1995-96 TO 2005-06

BIRTHPLACE	1995-96	1996-97	1997-98	1998-99	1999-00	2000-01	2001-02	2002-03	2003-04	2004-05	2005-06
CENTRAL ASIA											
Afghanistan	11	11	-	3	14	5	19	8	19	10	16
Armenia (d)	-	-	-	-	-	-	-	-	-	1	-
Azerbaijan (d)	-	-	-	-	-	-	-	1	-	-	-
Georgia (d)	-	-	-	-	4	-	-	-	-	-	-
Kazakhstan (d)	1	-	-	-	-	1	-	-	-	-	2
Tajikistan (d)	-	1	-	-	-	-	-	-	-	-	-
Uzbekistan (d)	-	4	-	-	-	-	-	1	-	-	-
TOTAL CENTRAL ASIA	12	16	-	3	18	6	19	10	19	11	18
NORTHERN AMERICA											
Bermuda	-	-	-	-	-	-	-	-	1	-	1
Canada	18	27	26	10	12	12	10	14	13	16	17
U.S.A.	51	44	32	28	18	31	23	29	27	28	41
TOTAL NORTHERN AMERICA	69	71	58	38	30	43	33	43	41	44	59
SOUTH AMERICA, CENTRAL AMERICA & THE CARIBBEAN											
<i>South America</i>											
Argentina	11	4	-	-	4	1	2	4	4	2	4
Bolivia	-	1	-	-	-	-	-	-	-	-	-
Brazil	3	1	1	2	5	14	13	10	10	7	2
Chile	5	8	10	1	-	2	1	7	4	3	4
Colombia	3	1	-	-	-	1	-	5	1	1	2
Ecuador	-	-	-	-	-	-	-	1	1	1	-
Paraguay	-	-	-	-	-	-	-	-	-	1	-
Peru	4	3	-	1	-	-	-	1	3	4	2
Venezuela	-	-	-	-	1	-	-	-	-	-	5
<i>Total</i>	<i>26</i>	<i>18</i>	<i>11</i>	<i>4</i>	<i>10</i>	<i>18</i>	<i>16</i>	<i>28</i>	<i>23</i>	<i>19</i>	<i>19</i>
<i>Central America</i>											
El Salvador	5	-	-	-	-	-	-	-	-	-	-
Guatemala	-	-	-	-	-	-	-	-	1	-	-
Honduras	1	1	-	-	-	-	-	-	-	-	-
Mexico	4	-	3	2	1	2	1	7	6	3	-
Nicaragua	-	-	-	-	-	-	-	-	-	-	1
Panama	-	-	-	-	-	-	-	-	-	1	-
<i>Total</i>	<i>10</i>	<i>1</i>	<i>3</i>	<i>2</i>	<i>1</i>	<i>2</i>	<i>1</i>	<i>7</i>	<i>7</i>	<i>4</i>	<i>1</i>
<i>The Caribbean</i>											
Cuba	-	-	-	-	-	-	1	-	-	-	-
Jamaica	1	-	-	-	-	-	-	-	-	-	1
Virgin Islands United States	-	-	-	-	-	-	-	-	1	-	-
<i>Total</i>	<i>1</i>	<i>-</i>	<i>-</i>	<i>-</i>	<i>-</i>	<i>-</i>	<i>1</i>	<i>-</i>	<i>1</i>	<i>-</i>	<i>1</i>
TOTAL SOUTH AMERICA, CENTRAL AMERICA & THE CARIBBEAN	37	19	14	6	11	20	18	35	31	23	21

(d) As reliable data are not available for component countries prior to 1995-96, care should be taken when interpreting the data.

AUSTRALIAN CAPITAL TERRITORY

TABLE 9.1 (CONTD) SETTLER ARRIVALS BY BIRTHPLACE, 1995-96 TO 2005-06

BIRTHPLACE	1995-96	1996-97	1997-98	1998-99	1999-00	2000-01	2001-02	2002-03	2003-04	2004-05	2005-06
SUB-SAHARAN AFRICA											
<i>Central & West Africa</i>											
Congo	-	-	-	-	-	-	-	1	1	-	2
Congo Democratic Republic of	-	1	-	-	-	-	-	-	-	-	12
Ghana	7	5	4	1	4	5	3	3	7	4	7
Guinea	-	-	-	-	-	-	-	-	1	-	-
Liberia	-	-	-	1	-	-	1	3	2	2	39
Niger	-	-	-	-	1	-	4	-	-	-	-
Nigeria	-	-	-	2	-	1	2	-	1	2	3
Senegal	-	-	-	-	-	-	-	-	-	1	-
Sierra Leone	-	-	-	-	-	-	8	-	8	43	8
<i>Total</i>	7	6	4	4	5	6	18	7	20	52	71
<i>Southern & East Africa</i>											
Botswana	2	-	-	-	-	-	-	-	1	1	1
Burundi	-	-	-	-	-	-	-	-	-	3	32
Eritrea (h)	4	-	1	-	1	-	-	-	2	6	2
Ethiopia (h)	9	4	4	-	5	4	11	6	14	18	3
Kenya	3	3	2	8	1	3	4	5	8	12	3
Lesotho	-	-	-	-	-	-	-	-	-	3	-
Malawi	-	-	-	-	-	-	-	-	-	-	3
Mauritius	-	-	-	-	2	1	-	3	-	1	-
Mozambique	-	-	2	-	-	-	-	-	-	-	-
Namibia	-	-	1	-	-	-	-	-	-	-	-
Somalia	9	5	-	3	1	1	1	3	1	-	1
South Africa	9	6	16	27	29	37	22	44	18	35	9
Tanzania	1	1	-	-	-	-	-	-	1	1	25
Uganda	1	-	-	1	1	-	-	-	1	1	1
Zambia	-	-	-	1	-	-	5	1	-	1	-
Zimbabwe	3	5	5	2	2	1	1	8	3	5	29
<i>Total</i>	41	24	31	42	42	47	44	70	49	87	109
TOTAL											
SUB-SAHARAN AFRICA	48	30	35	46	47	53	62	77	69	139	180
SUPPLEMENTARY CODES (i)											
Fmr Ussr & Baltic States nfd	22	11	2	19	12	21	12	18	7	9	15
TOTAL											
SUPPLEMENTARY CODES	22	11	2	19	12	21	12	18	7	9	15
NOT STATED	1	1	-	-	1	-	-	-	1	-	-
TOTAL ALL COUNTRIES	1,021	833	657	763	809	1,115	1,075	957	1,050	1,217	1,372

(h) As reliable data are not available for component countries prior to 1995-96, care should be taken when interpreting the data.

(i) Supplementary codes cannot be classified to any major region in the Standard Australian Classification of Countries (SACC). This may lead to under reporting of their component countries in the rest of the table, care should be taken when interpreting the data.

Explanatory Notes

Definition of “Settler”

Settlers comprise persons arriving in Australia who hold permanent visas, regardless of stated intended period of stay, New Zealand citizens who indicate an intention to settle, and those who are otherwise eligible to settle (eg. overseas-born children of Australian citizens).

Migration and Humanitarian Programs

The Migration (non-Humanitarian) Program is made up of *Family Stream*, *Skill Stream* and *Special Eligibility* migrants. The Humanitarian Program is made up of *Refugee*, *Special Humanitarian* and *Special Assistance* migrants.

Eligibility Categories

Eligibility categories reflect both the Migration and Humanitarian Programs’ permanent visa sub-classes under which settlers entered Australia. In addition there are a number of categories of settlers which are not covered by the Migration or Humanitarian Programs.

The *Family Stream* consists of a number of categories under which a potential migrant can be sponsored by a relative who is an Australian citizen or a permanent resident of Australia. The Family Stream comprises the following categories:

- Spouse;
- Prospective marriage;
- Child;
- Adoption;
- Parent (meeting the balance of family test);
- Aged dependent relative;
- Last remaining relative;
- Orphan dependent relative;
- Special need relative; and
- Interdependency.

From 1 July 1997 the Concessional category was moved to the Skill Stream and renamed Skilled Australian Linked it was then renamed Skilled Australian Sponsored from 1 July 1999 to reflect changes to the requirements such as age and work skills as well as various sponsor attributes.

The *Skill Stream* component of the migration program is designed to contribute to Australia’s economic growth. It consists of a number of categories for prospective migrants where there is demand in Australia for their particular occupational skills, outstanding talents or business skills. These categories are:

- ❑ *Skilled-Australian Sponsored* (previously known as Concessional Family to 30/6/97 then as Australian Linked to 30/6/99) allows Australian citizens or residents to sponsor their parents, brothers, sisters, nephews, nieces and non-dependent children. Applicants must meet a points test which takes into account their age and work skills as well as various sponsor attributes;
- ❑ *Skilled Designated Area Sponsored* (Regional Linked from 1/11/96 to 30/6/99) allows sponsorship of skilled relatives to designated areas of Australia. Both applicants and sponsors must satisfy certain criteria;
- ❑ *Employer Nomination* for highly skilled people nominated by employers in Australia who have been unable to find or train skilled workers in Australia for the position. This includes the Labour Agreement category for people who are nominated by an employer or organisation under a Labour Agreement, Regional Headquarters Agreement or the Regional Sponsored Migration Scheme and who have the skills, qualifications, and experience required;
- ❑ *Business Skills* for successful business persons with established skills in business who have a genuine commitment to owning and managing a business in Australia;
- ❑ *Distinguished Talent* for people who have outstanding records of achievement in a profession, occupation, the arts or sport; and
- ❑ *Independent* for unsponsored applicants whose education, skills, English language ability and ready employability will contribute to the Australian economy.

There is also a *Special Eligibility* category which caters for other types of visaed settler arrivals within the Migration Program but not included in the Family or Skill Streams. These are:

- ❑ Former citizen of Australia;
- ❑ Former resident of Australia; and
- ❑ Family of New Zealand Citizen for dependents of New Zealand citizens who have settled or intend to settle permanently in Australia.

The *Humanitarian Program* has two components: an offshore resettlement program for persons overseas, and onshore protection for those people already in Australia who arrived on temporary visas or in an unauthorised manner, and who claim Australia’s protection.

The offshore resettlement program comprises three categories:

- The *Refugee Program* which provides resettlement to Australia for people outside their home country subject to persecution in their home country;
- Special Humanitarian Programs* (SHP) which comprise the In-country Special Humanitarian Program for people suffering persecution within their own country, and the Global Special Humanitarian Program for people who have left their country because of substantial discrimination amounting to a gross violation of human rights; and
- the *Special Assistance Category* (SAC) which embraces groups determined by the Minister for Immigration and Multicultural and Indigenous Affairs to be of special concern to Australia and in real need, but who do not fit within other humanitarian categories. This program also assists those internally and externally displaced people who have close family links in Australia. This category was closed during the 2000-01 program year.

In addition there are some categories not covered by the Migration or Humanitarian Programs. These are:

- New Zealand Citizens* which refers to the arrival of New Zealand citizens under the Trans-Tasman Travel Arrangement; and
- Other* which refers primarily to the arrival in Australia of children born to Australian citizens overseas. It also includes residents of Cocos (Keeling) Islands, Norfolk Island etc, and persons granted Australian citizenship overseas.

Classification of Countries and Regions

Statistics in this publication are classified to regions and countries based on the ABS *Standard Australian Classification of Countries* (SACC). The classification is based on the concept of geographic proximity. It groups neighbouring countries into broad geographic areas on the basis of their similarity in terms of social, cultural, economic and political characteristics.

The country classification used in this report is listed on page 65. In the tables in this publication some minor groups have been combined due to space limitations. For further information about SACC and for copies of the classification please contact the ABS.

Australia and External Territories

Following amendments to Section 17(a) of the Acts Interpretation Act 1901 - 1973 effective 1 July 1992,

the territories of Christmas Island and Cocos (Keeling) Islands now form part of geographic Australia. The Jervis Bay Territory has always been a territory in its own right, and following self-government for the ACT it is no longer included with the ACT for statistical purposes. These three territories are classified as the ninth state/territory of Australia.

Australian External Territories comprises the statistical units of Norfolk Island and Other Australian External Territories.

Former Yugoslavia

Separate data for Serbia and Montenegro has been available since July 1998. Prior to July 1998 the *Former Yugoslavia nfd* component was a substantial proportion of total Former Yugoslavia. Consequently the separate figures for the individual countries were likely to be significantly understated.

Former USSR and the Baltic States

Because, *Former USSR and the Baltic States nfd* accounts for a high proportion of total Former USSR and the Baltic States, the separate figures for component countries are likely to be understated and should be used with caution.

Ethiopia and Eritrea

Caution is also required when using data for Ethiopia. This figure may include arrivals born in Eritrea since settlers who reported Ethiopia as their country of birth were coded as such, despite the fact that they may have been born in what is now called Eritrea.

Additional Data

The Research and Statistics Section offers a range of tables not published in this report, upon request. Statistics on settler arrivals can be cross-tabulated with the following data items:

- Country of Birth
- Country of Citizenship
- Country of Last Residence
- State/Territory of Intended Residence
- Sex
- Age
- Migration Category
- Occupation
- Applicant Type (Primary, Secondary)

Similarly, other types of movement (arrivals and departures) can be cross-tabulated with data items held on the Movements Database.

Related Publications

Many of the tables in this publication are available as more detailed statistical series, some of which extend over a longer time period. The main publications which contain such information are:

Research and Statistics Section, DIMIA:

- Australian Immigration, Consolidated Statistics — ceased production after 1999-2000

Australian Bureau of Statistics (ABS):

- Australian Demographic Statistics (3101.0)
- Estimated Resident Population by Sex and Age: States and Territories of Australia (3201.0)
- Migration Australia (3412.0)
- Overseas Arrivals and Departures (3401.0)
- The Labour Force (6203.0)

For copies of the ABS publications, please contact an ABS office.

Symbols and Abbreviations

The following symbols or abbreviations are used throughout this publication:

excl.	=	excluding
na	=	not available
nec	=	not elsewhere classified
nei	=	not elsewhere included
nfd	=	not further defined
nya	=	not yet available
p	=	preliminary
r	=	revised
-	=	nil
..	=	not applicable

Rounding

Where figures have been rounded, discrepancies may occur between sums of the component items and totals.

Country Classification (BASED ON SACC)

OCEANIA AND ANTARCTICA

Australia (includes External Territories)

Australia
Norfolk Island
Australian External Territories, nec

New Zealand

New Zealand

Melanesia

New Caledonia
Papua New Guinea
Solomon Islands
Vanuatu

Micronesia

Guam
Kiribati
Marshall Islands
Micronesia, Federated States of
Nauru
Northern Mariana Islands
Palau

Polynesia (excludes Hawaii)

Cook Islands
Fiji
French Polynesia
Niue
Samoa
Samoa, American
Tokelau
Tonga
Tuvalu
Wallis and Futuna

Polynesia (excludes Hawaii), nec

Antarctica

Adélie Land (France)
Argentinian Antarctic Territory
Australian Antarctic Territory
British Antarctic Territory
Chilean Antarctic Territory
Queen Maud Land (Norway)
Ross Dependency (New Zealand)

NORTH-WEST EUROPE

United Kingdom

Channel Islands
England
Isle of Man
Northern Ireland
Scotland
Wales

Ireland

Ireland

Western Europe

Austria
Belgium
France
Germany
Liechtenstein
Luxembourg
Monaco
Netherlands
Switzerland

Northern Europe

Denmark
Faeroe Islands
Finland
Greenland
Iceland
Norway
Sweden

SOUTHERN AND EASTERN EUROPE

Southern Europe

Andorra
Gibraltar
Holy See
Italy
Malta
Portugal
San Marino
Spain

South Eastern Europe

Albania
Bosnia and Herzegovina
Bulgaria
Croatia
Cyprus
Former Yugoslav Republic of Macedonia (FYROM)
Greece
Moldova
Romania
Slovenia
Yugoslavia, Federal Republic of

Eastern Europe

Belarus
Czech Republic
Estonia
Hungary
Latvia
Lithuania
Poland
Russian Federation
Slovakia
Ukraine

NORTH AFRICA AND THE MIDDLE EAST**North Africa**

Algeria
 Egypt
 Libya
 Morocco
 Sudan
 Tunisia
 Western Sahara
 North Africa, nec

Middle East

Bahrain
 Gaza Strip and West Bank
 Iran
 Iraq
 Israel
 Jordan
 Kuwait
 Lebanon
 Oman
 Qatar
 Saudi Arabia
 Syria
 Turkey
 United Arab Emirates
 Yemen

SOUTH-EAST ASIA**Mainland South-East Asia**

Burma (Myanmar)
 Cambodia
 Laos
 Thailand
 Viet Nam

Maritime South-East Asia

Brunei Darussalam
 Indonesia
 Malaysia
 Philippines
 Singapore

NORTH-EAST ASIA**Chinese Asia (includes Mongolia)**

China (excludes SARs and Taiwan Province)
 Hong Kong (SAR of China)
 Macau
 Mongolia
 Taiwan (Province of China)

Japan and the Koreas

Japan
 Korea, Democratic People's Republic of (North)
 Korea, Republic of (South)

SOUTHERN AND CENTRAL ASIA**Southern Asia**

Bangladesh
 Bhutan
 India
 Maldives
 Nepal
 Pakistan
 Sri Lanka
Central Asia
 Afghanistan
 Armenia
 Azerbaijan
 Georgia
 Kazakhstan
 Kyrgyz Republic
 Tajikistan
 Turkmenistan
 Uzbekistan

AMERICAS**Northern America**

Bermuda
 Canada
 St Pierre and Miquelon
 United States of America

South America

Argentina
 Bolivia
 Brazil
 Chile
 Colombia
 Ecuador
 Falkland Islands
 French Guiana
 Guyana
 Paraguay
 Peru
 Suriname
 Uruguay
 Venezuela
 South America, nec

Central America

Belize
 Costa Rica
 El Salvador
 Guatemala
 Honduras
 Mexico
 Nicaragua
 Panama

Caribbean

Anguilla
 Antigua and Barbuda
 Aruba
 Bahamas
 Barbados
 Cayman Islands
 Cuba
 Dominica
 Dominican Republic
 Grenada
 Guadeloupe
 Haiti
 Jamaica
 Martinique
 Montserrat
 Netherlands Antilles
 Puerto Rico
 St Kitts and Nevis
 St Lucia
 St Vincent and the Grenadines
 Trinidad and Tobago
 Turks and Caicos Islands
 Virgin Islands, British
 Virgin Islands, United States

SUB-SAHARAN AFRICA**Central and West Africa**

Benin
 Burkina Faso
 Cameroon
 Cape Verde
 Central African Republic
 Chad
 Congo
 Congo, Democratic Republic of
 Côte d'Ivoire
 Equatorial Guinea
 Gabon
 Gambia
 Ghana
 Guinea
 Guinea-Bissau
 Liberia
 Mali
 Mauritania
 Niger
 Nigeria
 Sao Tomé and Príncipe
 Senegal
 Sierra Leone
 Togo

Southern and East Africa

Angola
 Botswana
 Burundi
 Comoros
 Djibouti
 Eritrea
 Ethiopia
 Kenya
 Lesotho
 Madagascar
 Malawi
 Mauritius
 Mayotte
 Mozambique
 Namibia
 Réunion
 Rwanda
 St Helena
 Seychelles
 Somalia
 South Africa
 Swaziland
 Tanzania
 Uganda
 Zambia
 Zimbabwe
 Southern and East Africa, nec

Statistical Publications

The Research and Statistics Section produces a number of regular and special publications providing statistics which are relevant to the formulation and assessment of immigration policies and procedures. Some of the publications referred to below, are available from the Department's website: <http://www.immi.gov.au/statistics>.

REGULAR PUBLICATIONS

- Immigration Update* (produced biannually)
- Australian Immigration Consolidated Statistics* (ceased production after 1999-2000)
- Settler Arrivals* (produced annually)

**For more detailed data not available in these publications, contact the Statistics Sub-Section on:
Ph: (02) 6264 2486 Fax: (02) 6264 2632.**