

Population Growth

Components of Population Growth

In the year ended 30 June 2002, Australia's estimated resident population increased by 249,500 persons or 1.29 per cent to 19,662,800. (This differs from the 2001 Census total as it includes a number of adjustments including undercount in the census.)

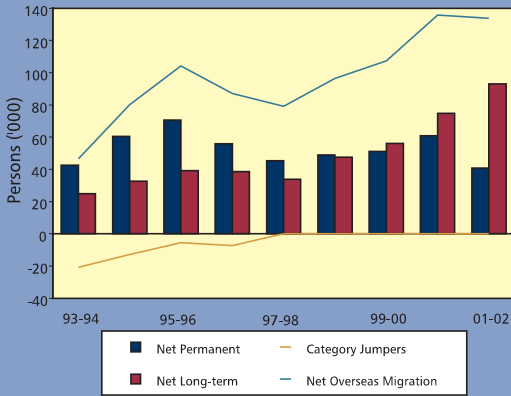
Natural increase has usually been the main contributor to population growth and has not varied greatly over the past 30 years. In contrast, net overseas migration has fluctuated markedly.

Overseas Migration

Net overseas migration (NOM) is the addition (or loss) to the population of Australia arising from the difference between those leaving permanently or on a long-term (12 months or longer) basis, and those arriving permanently or long-term. The annual NOM figure is also adjusted to account for the estimated number of people who change their travel intentions, for example, people who come to Australia intending to stay short-term (less than 12 months) but who decide to stay longer, or vice versa. These people are called category jumpers.

In 2001-02 Australia's NOM gain was estimated to be 133,700, which was 2,000 less than the estimated 2000-01 figure of 135,700. (This assumes the net effect of category jumpers was zero, as the ABS has suspended its estimate of category jumping from July 1997 until further notice. When a review of the measurement of category jumping is completed, estimates of NOM can be expected to be significantly revised once again, and recent estimates of category jumping may be reduced below zero.)

Fig 1.1: Net Overseas Migration



Source Data: ABS Australian Demographic Statistics, Sept Qtr 2002 (3101.0)

Population Projections

Population Change

Australia's demographic future depends on the following key factors:

- fertility;
- life expectancy; and
- net overseas migration (NOM).

Change in the size of the population is the result of natural increase (births minus deaths) and NOM (permanent and long-term arrivals minus permanent and long-term departures with an adjustment for category jumping).

Fertility

Australia's total fertility rate (TFR), the average number of children a woman would bear throughout her lifetime, has declined steadily during the 1990s at a rate of around 0.02 children per woman per annum to reach 1.73 children per woman in 2001–02. (Fig 1-2)

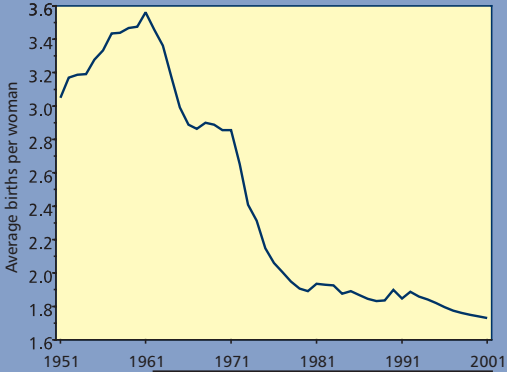
Life Expectancy

During the period 1975–2000, expectation of life rose by five years, reaching 76.5 years for males and 82.5 for females. By 2050, expectation of life is assumed to be 83.3 years for males and 86.5 years for females, remaining constant thereafter to 2100 in the DIMIA projections.

Net Overseas Migration

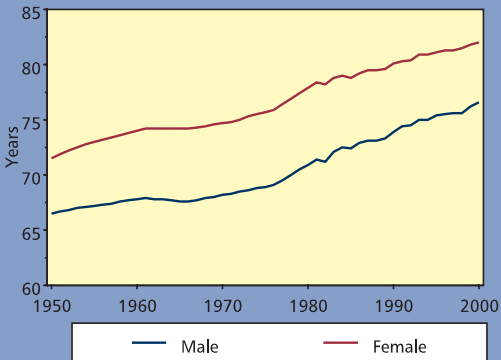
DIMIA projections assume that, if current immigration policies are maintained for the next 50 years, NOM may average around 100,000 per annum in the long-term, although it should be noted that NOM can be highly volatile.

**Fig 1.2: Total Fertility Rate
1951–2001**



Source Data: ABS Australia Demographic
Statistics - 3101.0

**Fig 1.3: Life Expectancy at Birth
1950–2000**



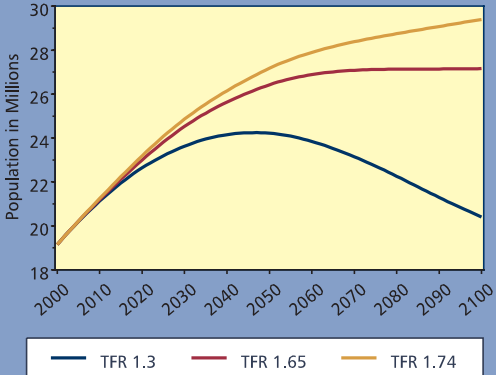
Source Data: Australian Bureau
of Statistics - 3302.0

Population Prospects for Australia

Under the scenario of a Total Fertility Rate (TFR) of 1.65 and 100,000 NOM, the population would reach about 26.4 million by around the middle of this century and continue to grow very slowly to about 27.1 million by the end of this century. Population growth rate would fall from 1.3 per cent per annum currently to 0.3 per cent by 2050, reaching zero by 2100. Deaths are likely to exceed births by around the mid to late 2030s. Beyond this point, only NOM will contribute to population growth. Australia's population would continue to grow provided NOM is around 100,000 per annum (around the current level) or more. Lower NOM, however, would result in a declining population from about mid-century.

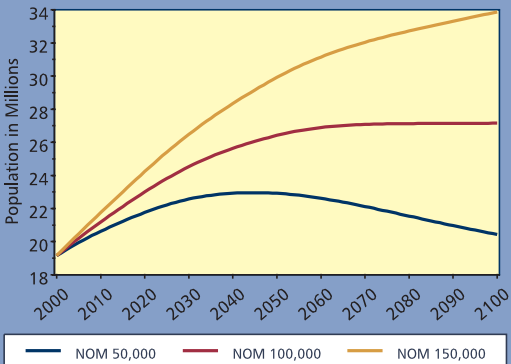
To illustrate the impact of different levels of fertility and NOM on Australia's population, Figures 1-4 and 1-5 compare the different projection outcomes to 2100, based on various scenarios about NOM and TFR.

**Fig 1.4: Projected Population
2000–2100 if NOM 100,000**



Source Data: DIMIA Population Projections

**Fig 1.5: Projected Population
2000–2100 if TFR 1.65**



Source Data: DIMIA Population Projections

Immigration to the States

State Distribution of Population

At 30 June 2002, over three quarters of Australia's population lived in three States: New South Wales (33.8 per cent), Victoria (24.8 per cent) and Queensland (18.9 per cent).

The remaining 23 per cent lived in Western Australia (9.8 per cent), South Australia (7.7 per cent), Tasmania (2.4 per cent), the Australian Capital Territory (1.6 per cent) and the Northern Territory (1.0 per cent).

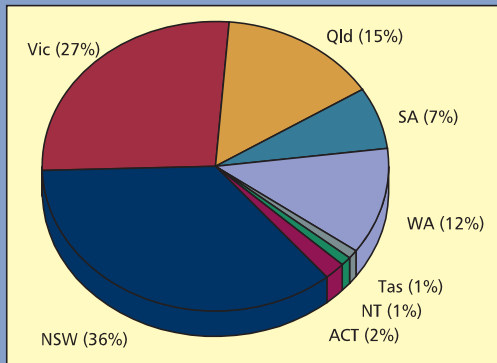
Distribution of Overseas-born by State

The highest proportion of overseas-born was in Western Australia (28.5 per cent of the State population), followed by New South Wales (24.8 per cent) and Victoria (24.6 per cent). The State with the lowest proportion of overseas-born in its population was Tasmania (10.5 per cent), followed by the Northern Territory (15.5 per cent).

People from the United Kingdom form the largest migrant group in every State and Territory, ranging from a low of 18.6 per cent of overseas-born persons in New South Wales to 47.2 per cent in Tasmania.

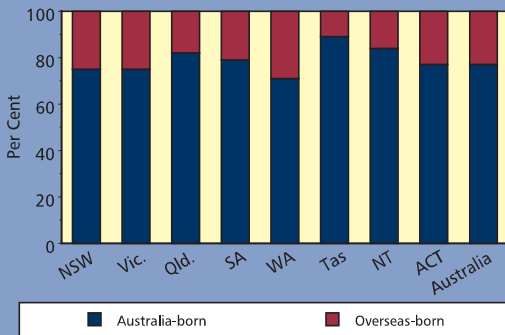
Queensland (21.1 per cent) and the Northern Territory (12.7 per cent) have a high proportion of people born in New Zealand; South Australia (8.4 per cent) and Victoria (8.3 per cent) have an above average proportion of Italian settlers; while the Northern Territory has a relatively high proportion of settlers from the Philippines (6.5 per cent).

**Fig 1.6: Overseas-born Population by State
2001 Census**



Source Data: ABS - 2001 Census of Population and Housing

**Fig 1.7: Composition of State Populations by Birthplace
2001 Census**



Source Data: ABS - 2001 Census of Population and Housing

State Population Growth

All State and Territory populations increased in the twelve months to June 2002, through natural increase, net overseas migration and interstate migration.

Queensland, Victoria and Western Australia had the highest growth rates (2.16, 1.41 and 1.38 per cent respectively). New South Wales' population growth rate was 0.99 per cent, which was lower than the national average of 1.29 per cent.

In 2001–02, Queensland gained more population through interstate migration than from natural increase or net overseas migration. Victoria was the only other State to gain from interstate migration. Conversely, most of Tasmania's population loss was through interstate migration (-1,691 persons). However, Tasmania has had positive population growth in the last two financial years despite having negative growth in the four years prior to this.

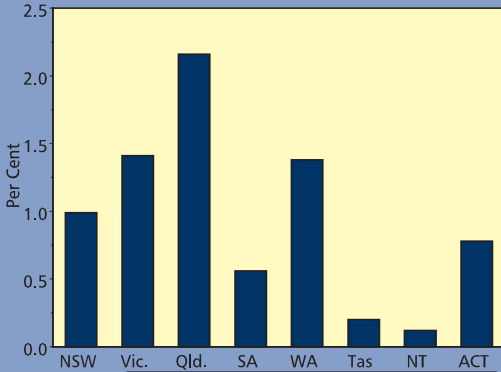
State of Intended Residence

On arrival in Australia, settler arrivals are asked to indicate the State or Territory in which they intend to settle, although they are free to settle where they wish and may subsequently change their intended place of settlement.

In 2001–02, the number of settler arrivals in each State or Territory (with the percentage of total settler arrivals in brackets) was:

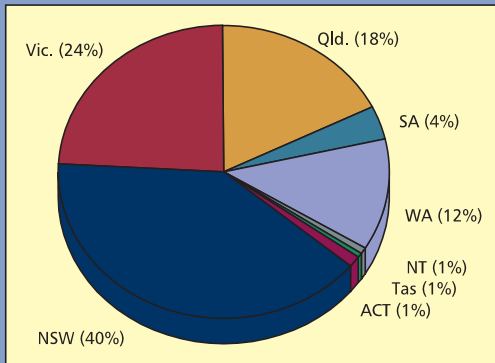
NSW	35,301 persons (39.7%)
Victoria	21,374 persons (24.0%)
Queensland	15,825 persons (17.8%)
South Aust.	3,316 persons (3.7%)
Western Aust.	10,954 persons (12.3%)
Tasmania	589 persons (0.7%)
NT	459 persons (0.5%)
ACT	1,075 persons (1.2%)

**Fig 1.8: Population Growth by State
30 June 2002**



Source Data: ABS Australian Demographic Statistics, Sept Qtr 2002 (3101.0)

**Fig 1.9: Settler Arrivals by State
2001-02**



Source Data: OAD Statistics DIMIA

Multicultural Australia

Australian multiculturalism recognises and celebrates Australia's cultural diversity.

It accepts and respects the right of all Australians to express and share their individual cultural heritage within an overriding commitment to Australia and the basic structures and values of Australian democracy.

It also refers specifically to the strategies, policies and programs that are designed to:

- make our administrative, social and economic infrastructure more responsive to the rights, obligations and needs of our culturally-diverse population;
- promote social harmony among the different cultural groups in our society; and
- optimise the benefits of our cultural diversity for all Australians.

Migration History

Indigenous peoples have been living in Australia for some 50,000 years, scientists believe. All other Australians (about 97 per cent) have been settlers or their descendants for more than 200 years.

Since the end of World War II, over six million people have come to Australia as new settlers, with more than 600,000 people arriving under humanitarian programs as displaced persons and refugees.

During the 1990s Australia received 900,000 migrants and in 2001–2002 alone nearly 88,900 people arrived to settle in Australia. In addition, Australia is one of only nine countries that operate a dedicated offshore resettlement program, which accepts the world's most needy and desperate people. On a per capita basis, it is one of the most generous resettlement countries.