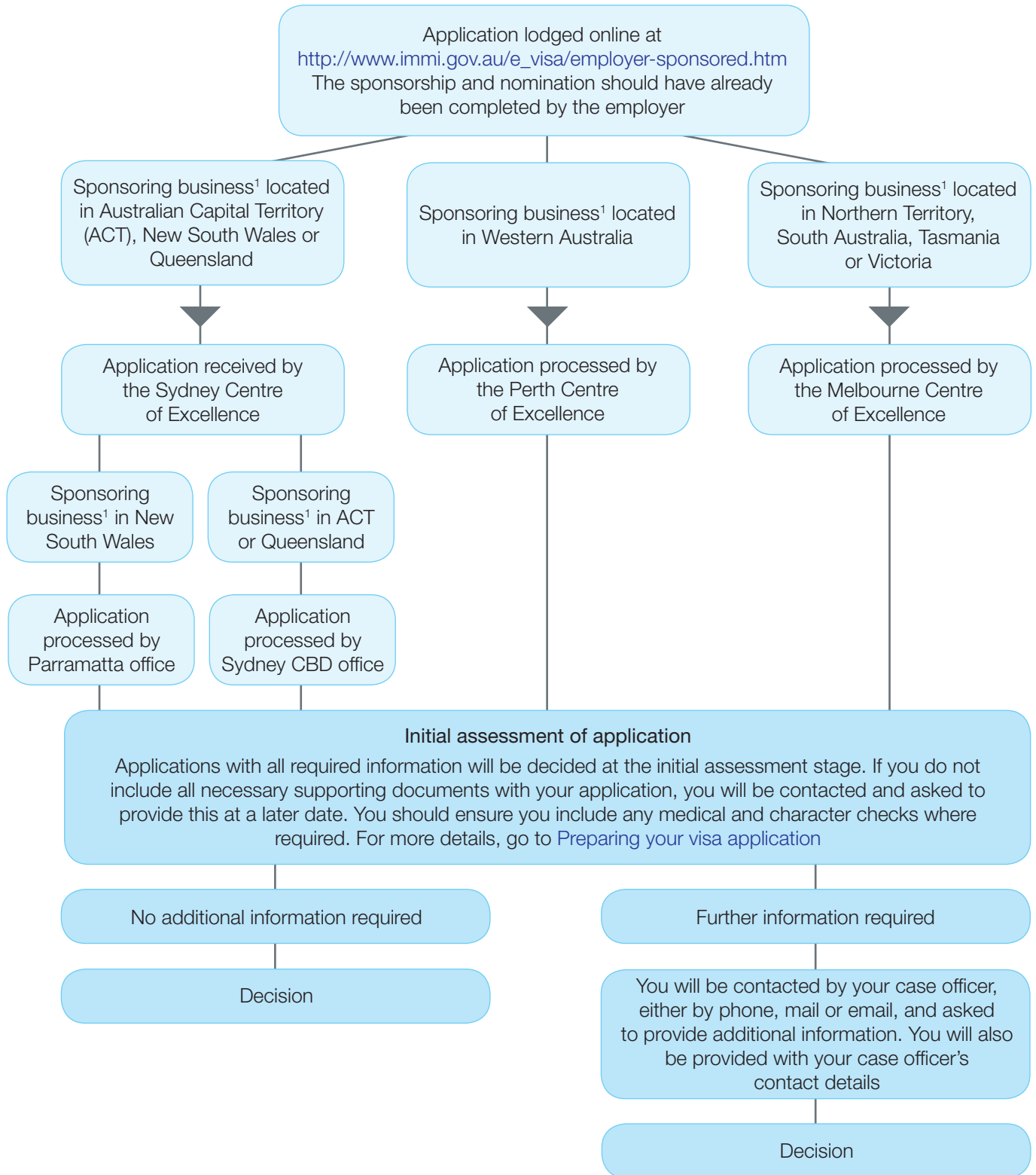




Temporary Business (Long Stay) (subclass 457) visa Electronic lodgement – what happens to my application?

Lodgement and receipt



Assessment and decision

1. The appropriate centre of excellence is based on the location of the sponsoring business. If the business has more than one location, the processing centre will be based on the state or territory where head office is located.

The business's head office is determined as the location where senior management are based. This location may be separate from the operational base of the business, but will be used as a contact point for the department when processing subclass 457 applications.

If your head office is located outside of Australia, the state or territory where you will be working will determine which centre processes your application.