



Address

Andrew Metcalfe

Secretary

Department of Immigration and Citizenship

**‘Migration as a policy tool to
manage the global economic
crisis’**



MEDIA RELEASE
MINERALS COUNCIL OF AUSTRALIA

28 May 2008

AUSTRALIA MUST ADDRESS CAPACITY CONSTRAINTS OR RISK LOSING
FURTHER SHARE OF GLOBAL MINERALS MARKET – NEW RESEARCH

2007 & 2008

‘Capacity constraints are holding back our economy.’

Prime Minister Kevin Rudd
21 January 2008

‘Addressing Australia’s long-term skills shortages is vital...’

Prime Minister Kevin Rudd
17 January 2008



AUSTRALIAN INDUSTRY
GROUP



Monday 26 March 2007

**Survey of Australian Manufacturing:
Intense import competition and capacity constraints slow growth**

Manufacturing growth slowed in the March quarter 2007 due to skill shortages and other capacity



Definition of a crisis

crisis

1. a decisive or vitally important stage in the course of anything;

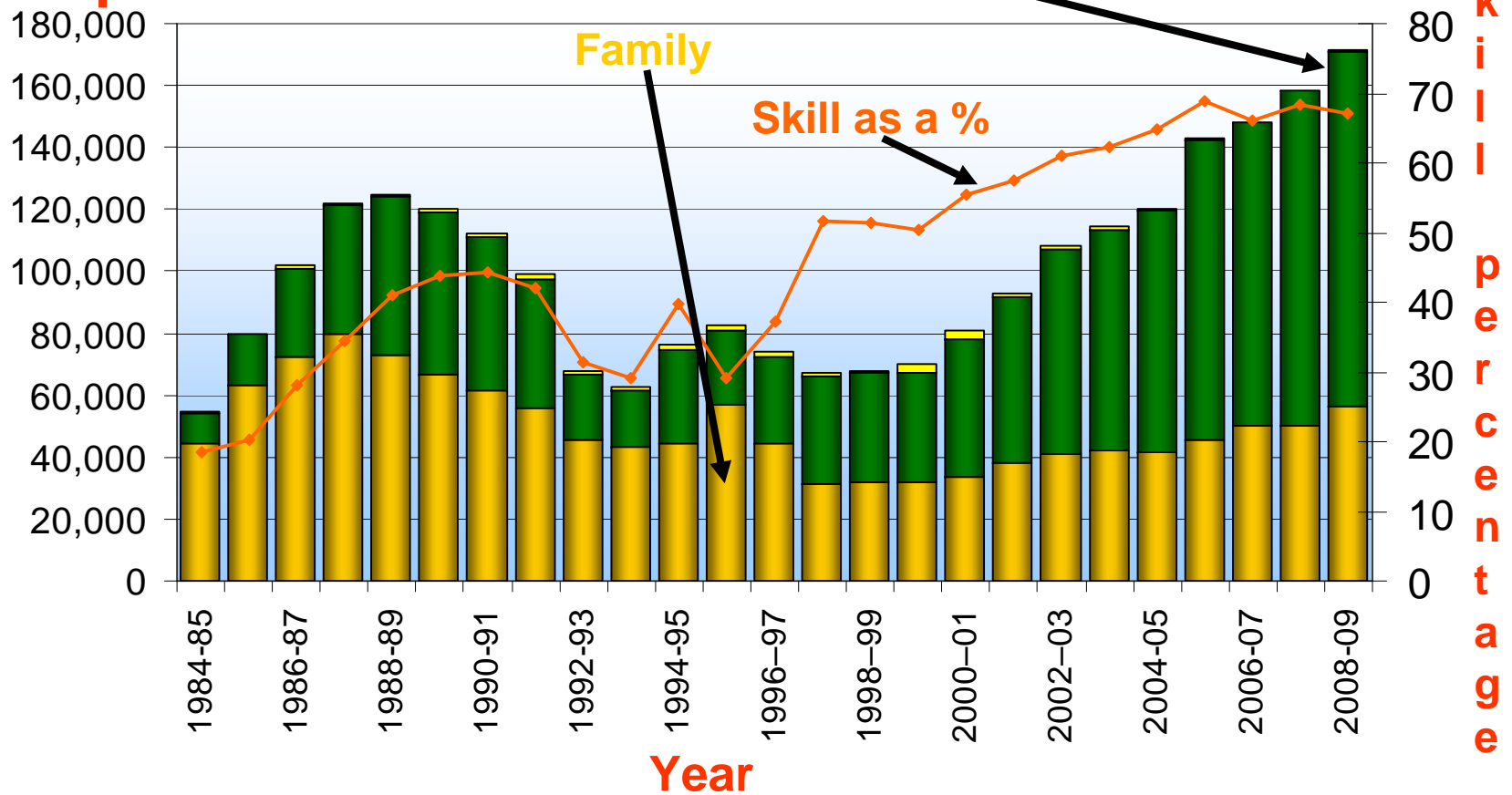
a turning point;

a critical time or occasion:

a political crisis; a business crisis.

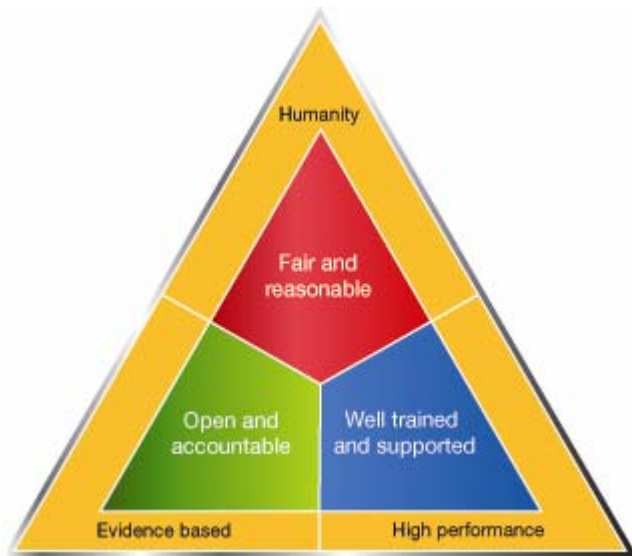
Migration program outcome

Visa places



Three strategic themes

people our business



- an open and accountable organisation
- fair and reasonable dealings with clients, and
- well-trained and supported staff



MEDIA RELEASE
MINERALS COUNCIL OF AUSTRALIA

28 May 2008

AUSTRALIA MUST ADDRESS CAPACITY CONSTRAINTS OR RISK LOSING
FURTHER SHARE OF GLOBAL MINERALS MARKET – NEW RESEARCH

2007 & 2008

‘Capacity constraints are holding back our economy.’

Prime Minister Kevin Rudd
21 January 2008

‘Addressing Australia’s long-term skills shortages is vital...’

Prime Minister Kevin Rudd
17 January 2008



AUSTRALIAN INDUSTRY
GROUP



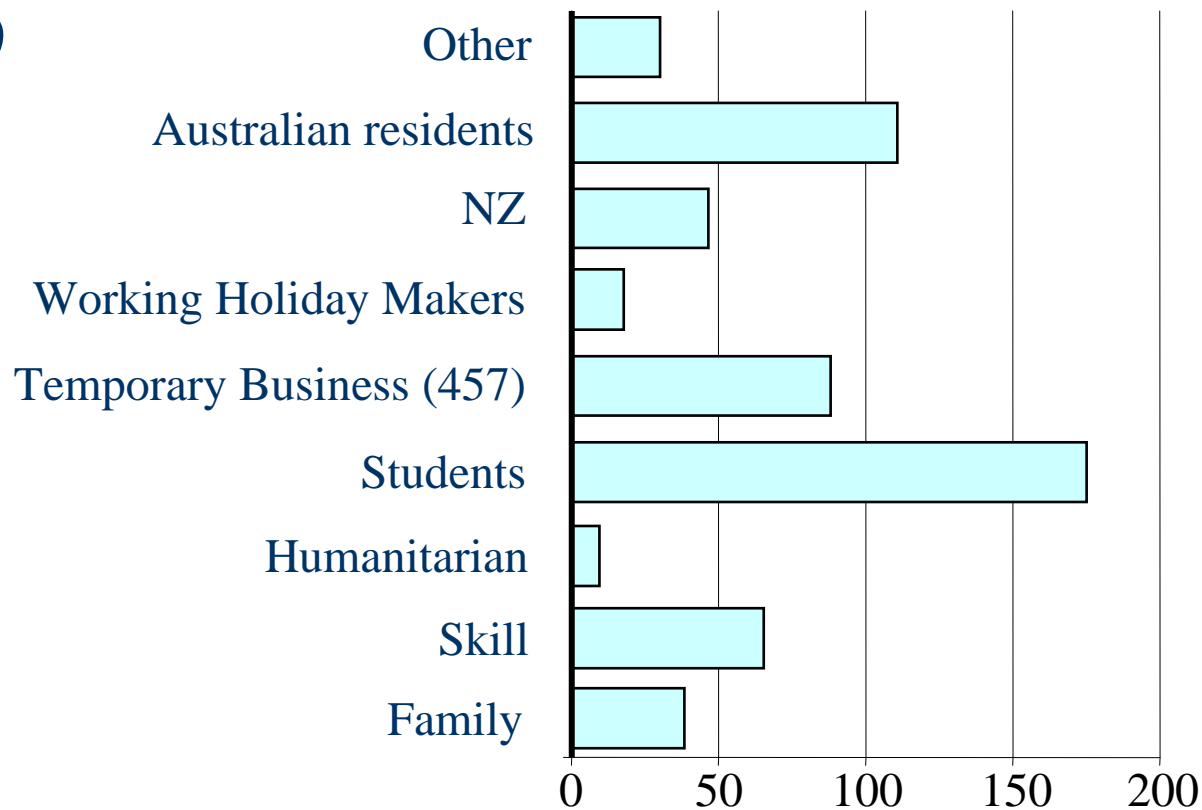
Monday 26 March 2007

**Survey of Australian Manufacturing:
Intense import competition and capacity constraints slow growth**

Manufacturing growth slowed in the March quarter 2007 due to skill shortages and other capacity

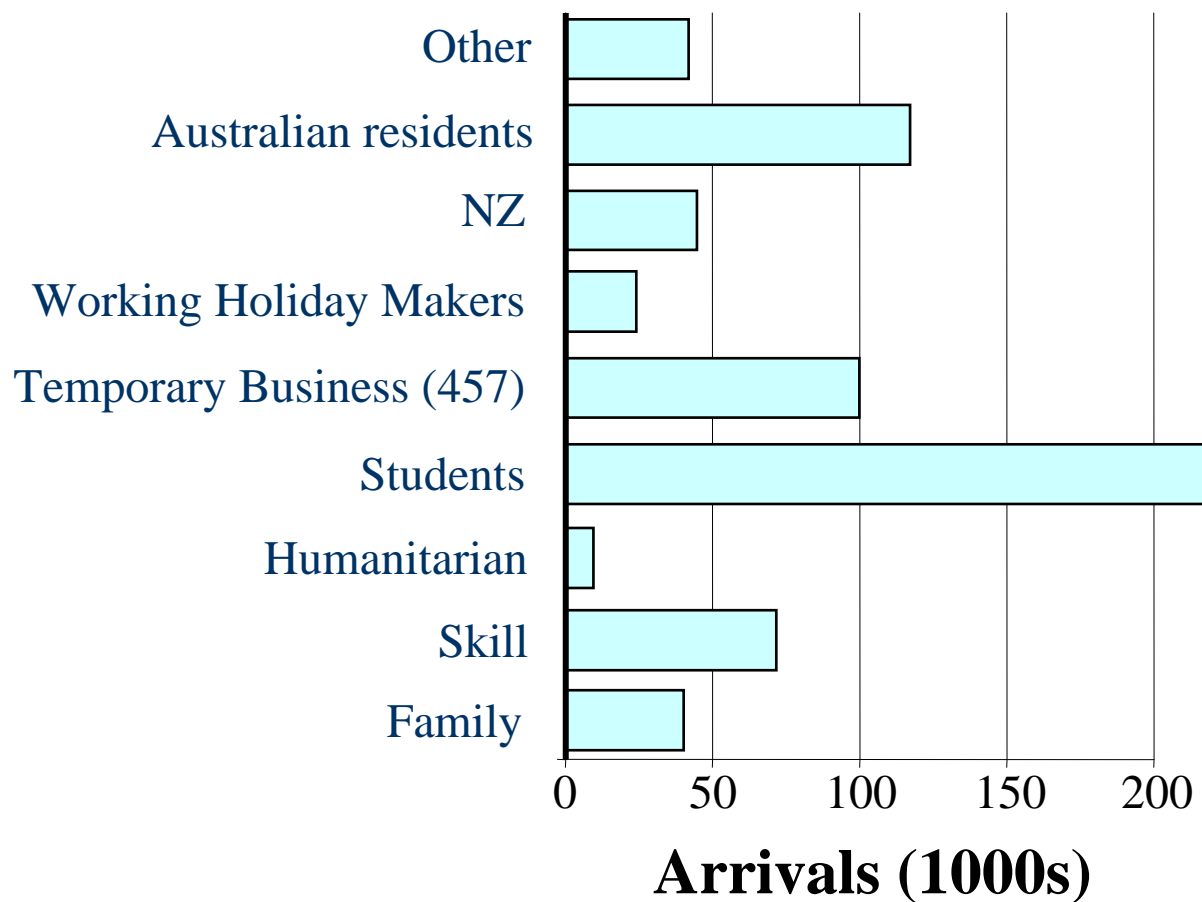
Arrivals 2007-08 (1000s)

Visa classes



Arrivals 2008-09 (1000s)

Visa classes





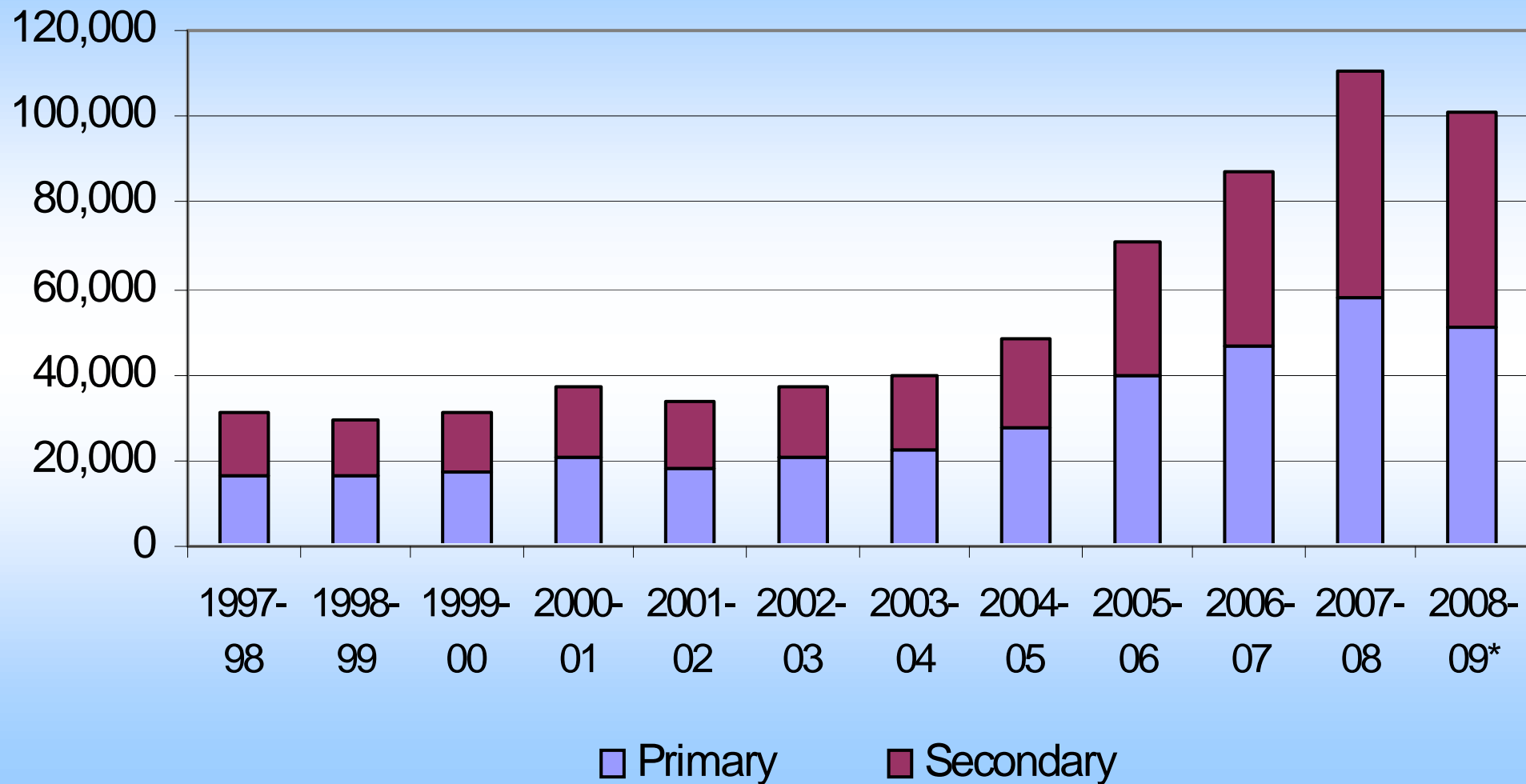
MODL - Migration Occupations in Demand List

A person:

- | | |
|---|-------------------|
| • 29 years or younger | 30 points |
| • skilled occupation | 60 points |
| • Australian VET qualification | 5 points |
| • competent English skills | 15 points |
| • a year's experience
in a MODL occupation | 15 points |
| Total | 125 points |

**...passes the points test (120 needed)
for a permanent skilled visa**

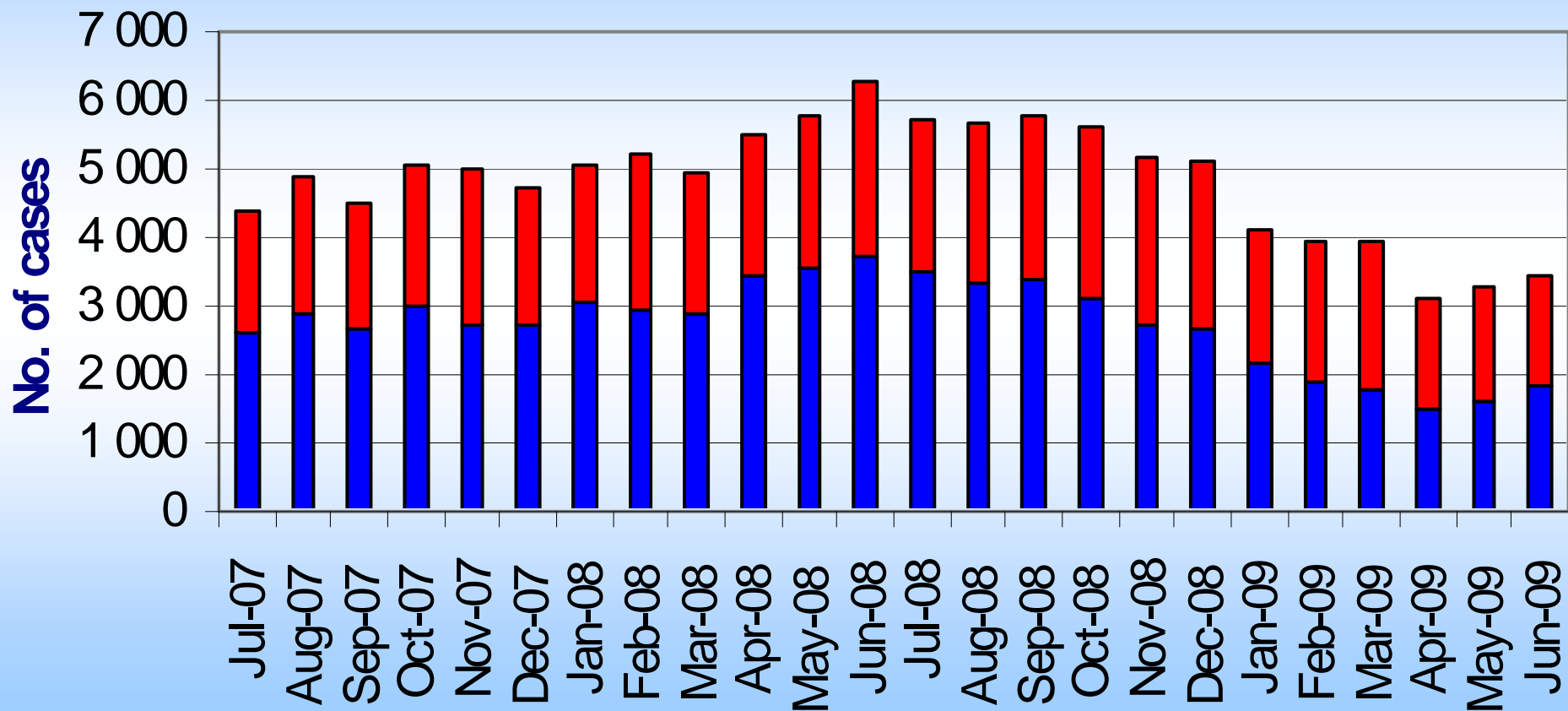
Subclass 457 visa grants since 1 July 1997



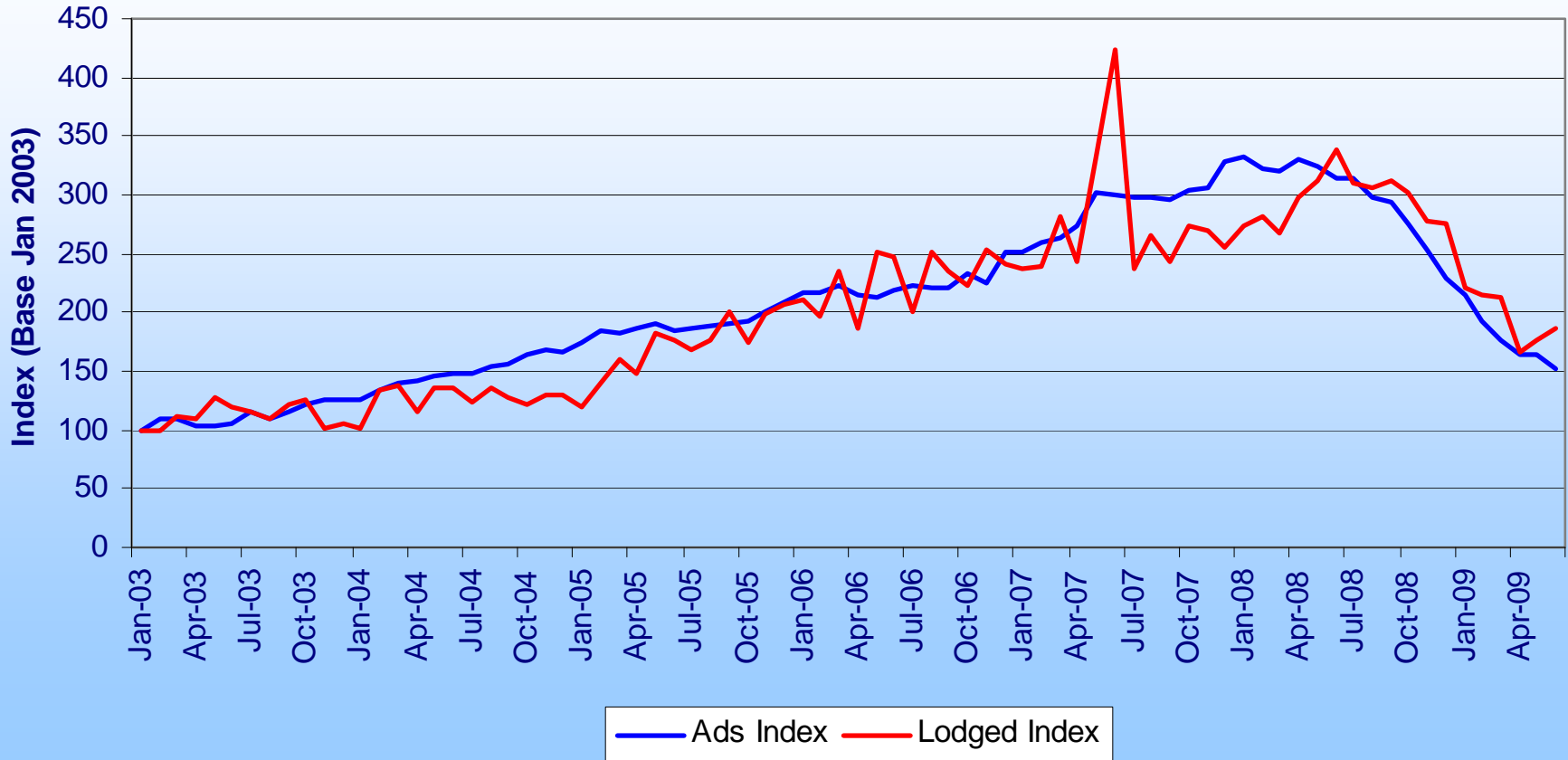
Subclass 457 primary visa cases lodged*

■ Onshore applications

■ Offshore applications



ANZ Job Advertisement Series and Subclass 457 Primary Applications Lodged to 30 June 2009



2009-10 Budget – skills

- Respond quickly to short term changes in demand (Critical Skills List, faster 457 processing, increased employer/State sponsorship)
- Augment long term skill needs (MODL review)
- Address integrity and exploitation issues in key labour market programs such as 457 (package of reforms)
- Optimise our long term demographic and economic future



Well-targeted skilled migration:

- adds to the people of working age (population)
- increases the proportion in work (participation)
- raises GDP per capita (productivity)



NOM – Net Overseas Migration

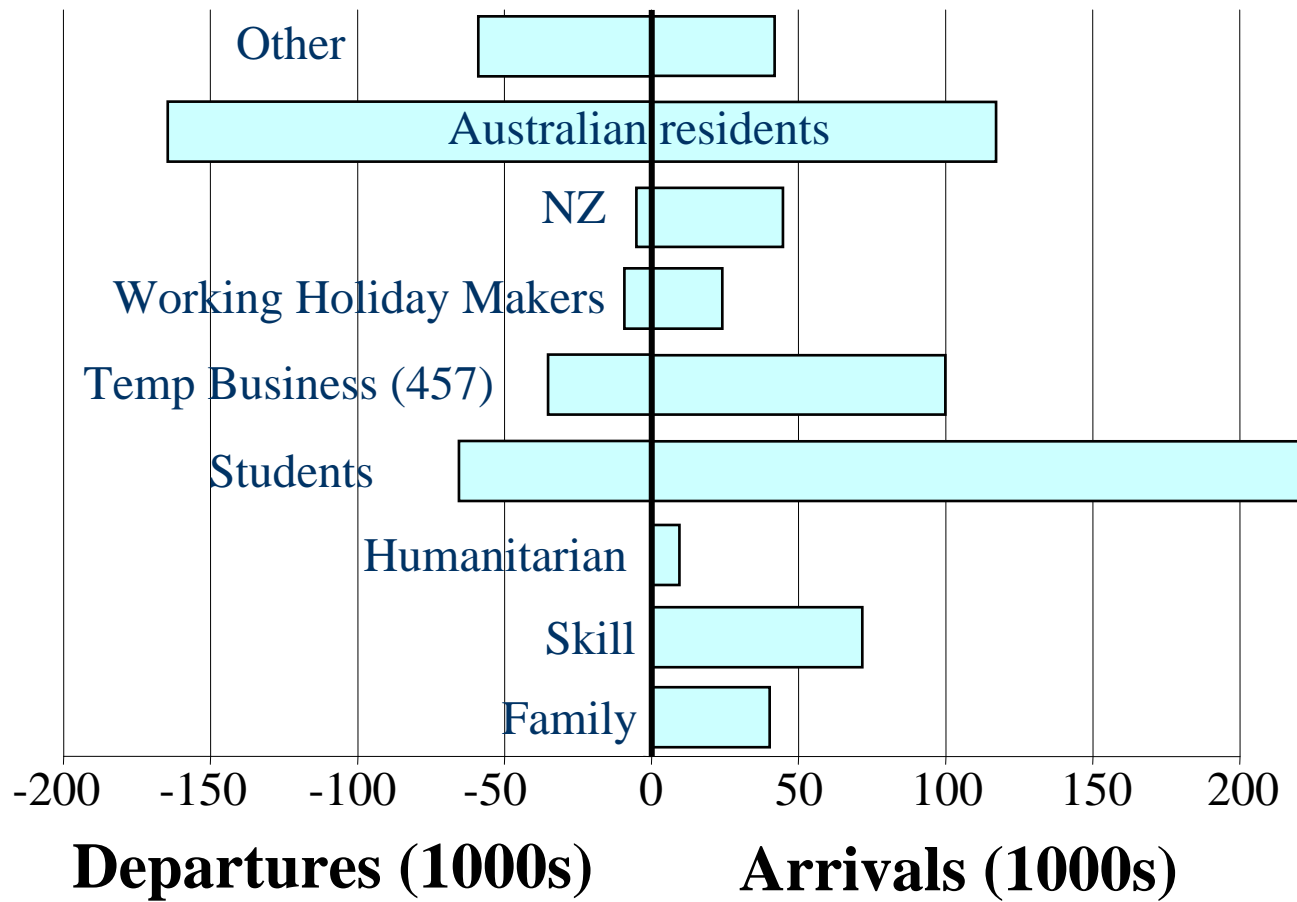
Permanent and long term arrivals
minus
permanent and long term departures

NOM includes people on temporary (but long term) visas, including:

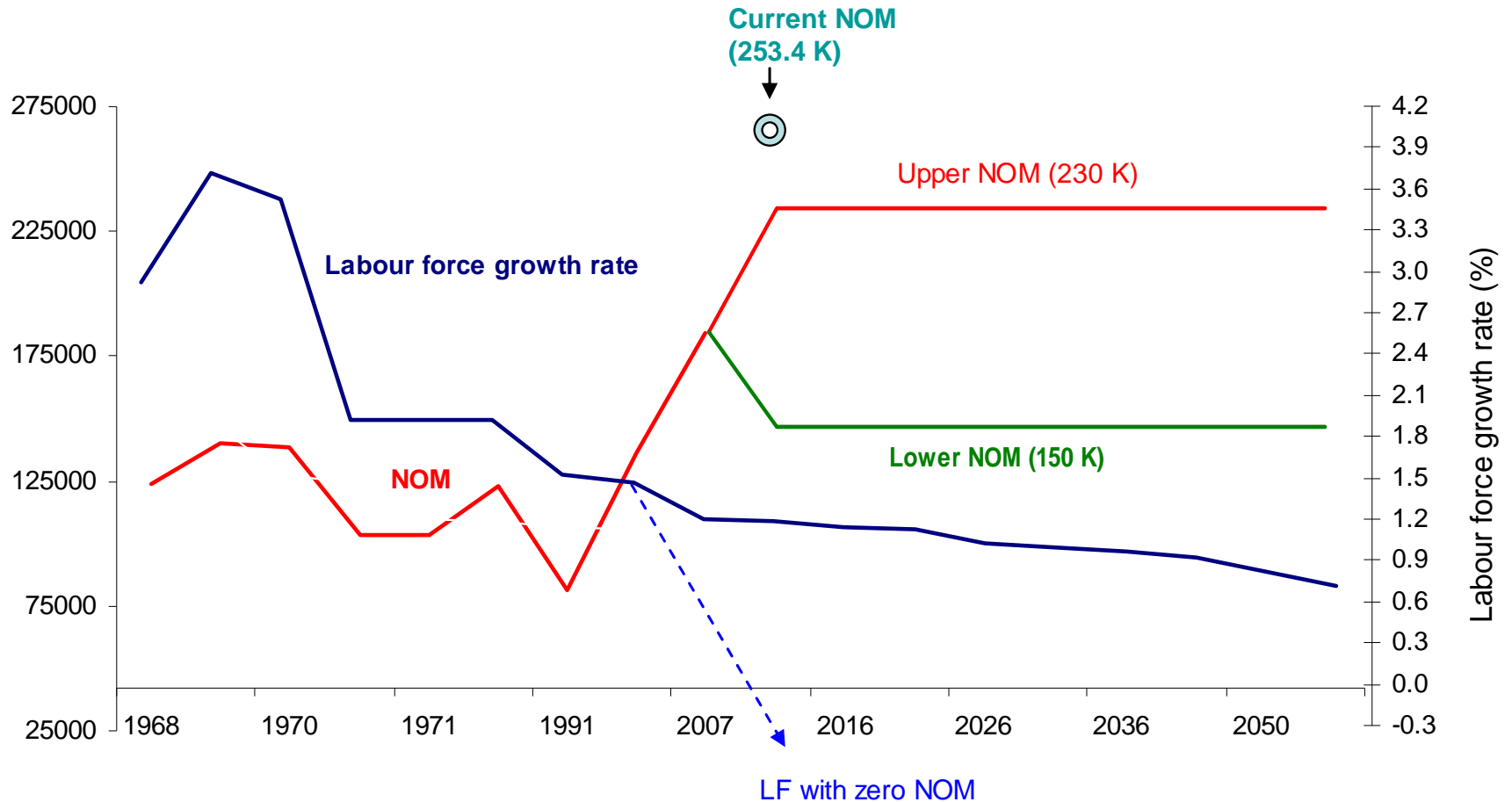
- overseas students and
- 457 skilled visa holders

Arrivals and departures 2008-09

Visa classes



Labour force and NOM



Population influences policies

Policy Question?

1st Intergen
Report (IGR1)
NOM=110 000

IGR 2
NOM=150 000

Latest Budget
estimate for 2009
NOM=220 000

Infrastructure

Housing
availability

Social
welfare and
inclusion

Health

Energy

Trains
Traffic
Energy supply

Temporary
housing
Homelessness

Community
services

Service
requirements

Pollution
Global
warming

*NOM
assumptions*

*Planning
challenges...
...will have
critical
outcomes*



Our aim for skilled migration

- Balance temporary and permanent skilled migration
- Contribute towards long term economic, demographic and environmental objectives
- Be responsive to the business cycle
- Fill critical skill shortages
- Support employers, states and territories to directly sponsor skilled migrants faster and flexibly



Australian Government
Department of Immigration
and Citizenship

Andrew Metcalfe

Secretary

Department of Immigration and Citizenship